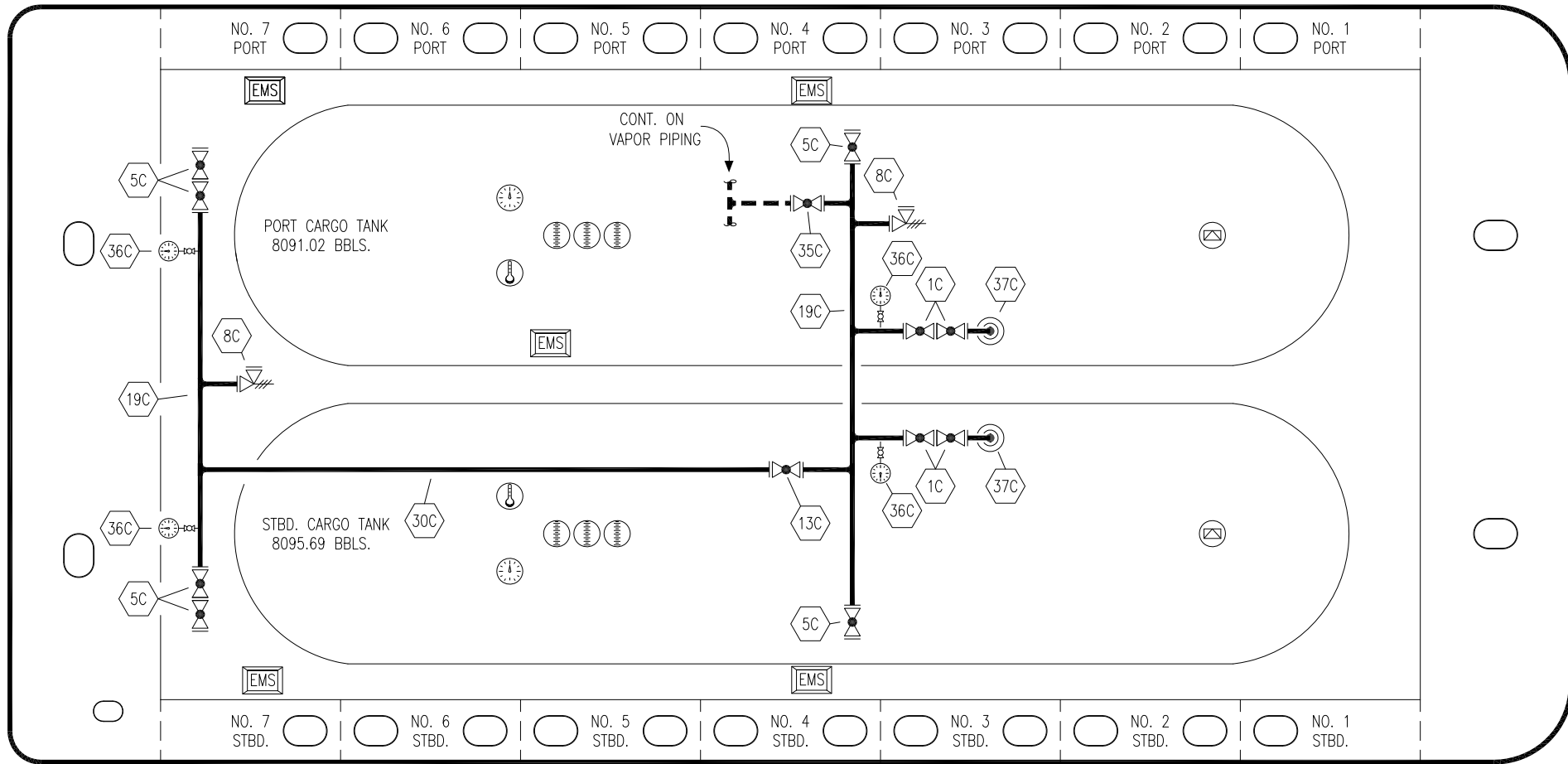


PORT

NO. 7 PORT ○ NO. 6 PORT ○ NO. 5 PORT ○ NO. 4 PORT ○ NO. 3 PORT ○ NO. 2 PORT ○ NO. 1 PORT ○

STERN



BOW

NO. 7 STBD. ○ NO. 6 STBD. ○ NO. 5 STBD. ○ NO. 4 STBD. ○ NO. 3 STBD. ○ NO. 2 STBD. ○ NO. 1 STBD. ○

STARBOARD

- NO DESCRIPTION
- 1C CARGO TANK VALVE
- 5C HEADER VALVE
- 8C RELIEF VALVE
- 13C CARGO PIPING BLOCK VALVE
- 19C CARGO HEADER
- 30C CARGO PIPELINE
- 35C CROSSOVER VALVE
- 36C PRESSURE GAUGE
- 37C CARGO DROP

— ABOVE DECK PIPING

CARUTHERSVILLE SHIPYARD — EX: KIRBY 15800

KIRBY INLAND MARINE 

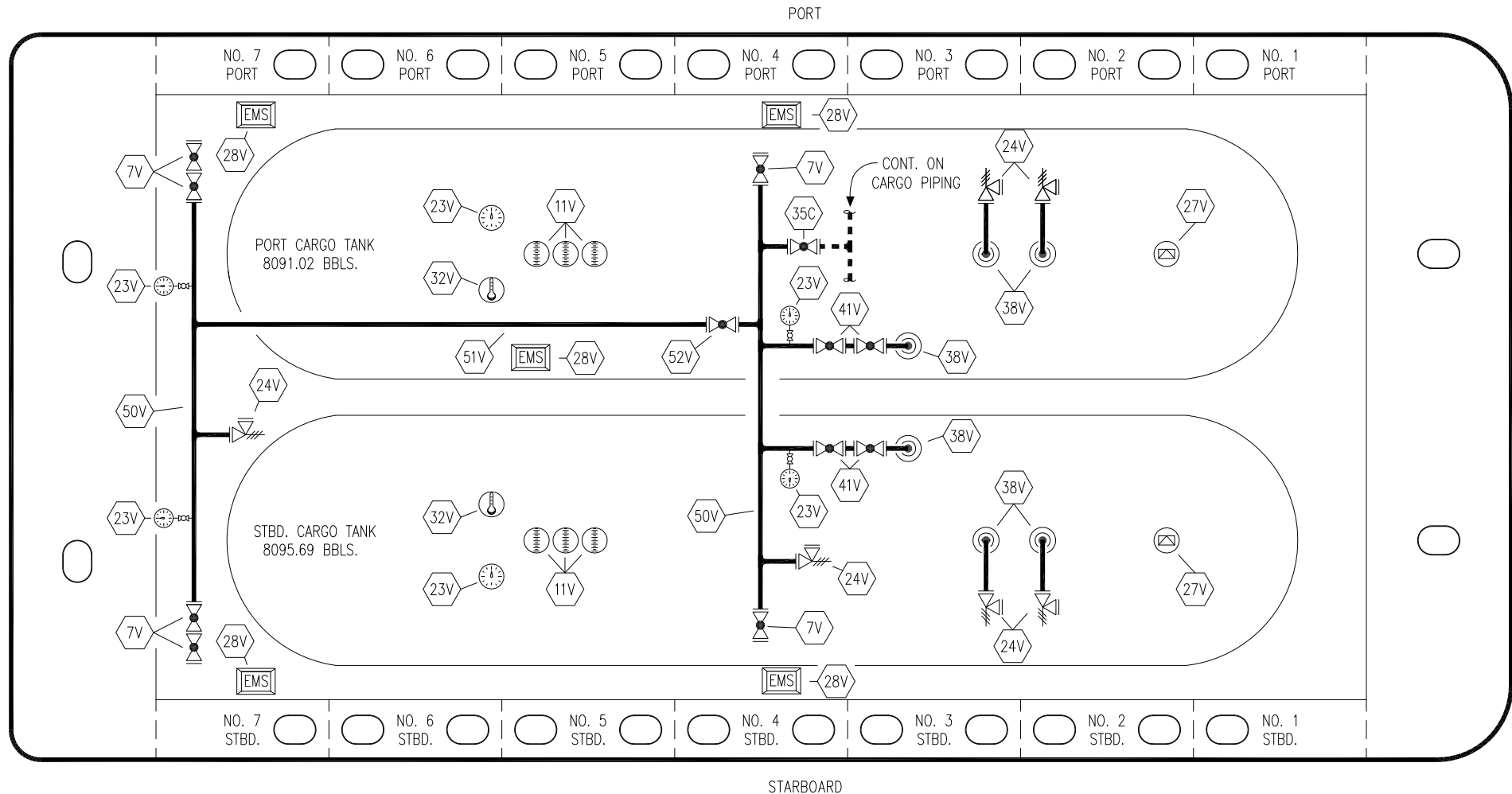
**CARGO
PIPING FLOW DIAGRAM**

1	10/13/20	MRV	DDA	TL	REVISED PER CLIENT COMMENTS
0	03/02/09	RB	RB	OF	APPROVED
REV.	DATE	BY	CHK	APP	REVISION DESCRIPTION

SCALE: NONE
PAGE: 1 OF 2

KIRBY 16801

REV. **1**



NO	DESCRIPTION	NO	DESCRIPTION
7V	HEADER VALVE	41V	VAPOR TANK VALVE
11V	1 METER GAUGE STICK	50V	VAPOR HEADER
23V	PRESSURE GAUGE	51V	VAPOR PIPELINE
24V	PRESSURE RELIEF VALVE	52V	BLOCK VALVE
27V	SPEW VALVE	—	ABOVE DECK PIPING
28V	EMERGENCY SHUT DOWN		
32V	TEMPERATURE GAUGE		
35C	CROSSOVER VALVE		
38V	VAPOR DROP		

CARUTHERSVILLE SHIPYARD — EX: KIRBY 15800

KIRBY INLAND MARINE 

**VAPOR
PIPING FLOW DIAGRAM**

1	10/13/20	MRV	DDA	TL	REVISED PER CLIENT COMMENTS
0	03/02/09	RB	RB	OF	APPROVED
REV.	DATE	BY	CHK	APP	REVISION DESCRIPTION

SCALE: NONE
PAGE: 2 OF 2

KIRBY 16801

REV. **1**