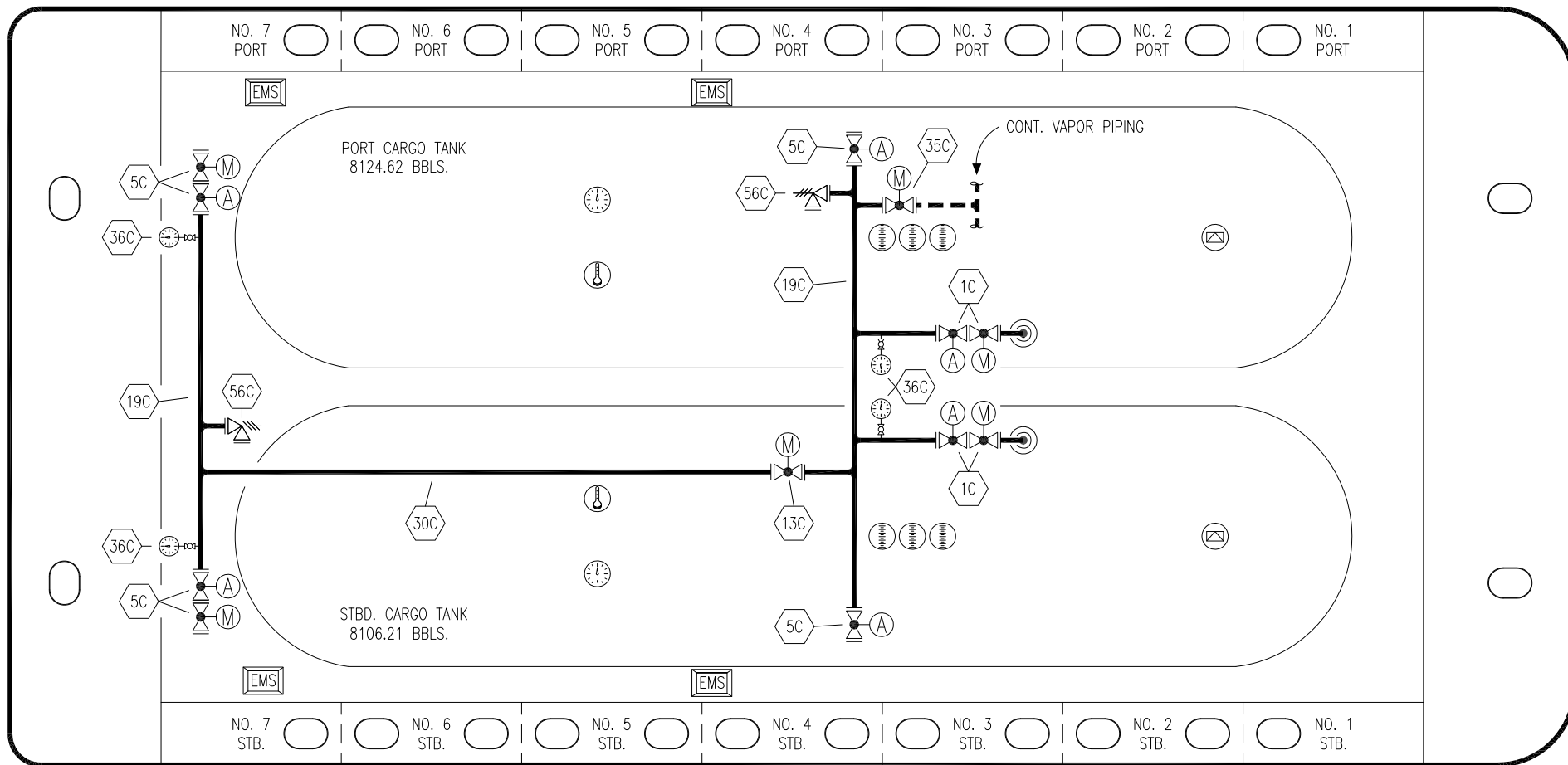


PORT

NO. 7 PORT NO. 6 PORT NO. 5 PORT NO. 4 PORT NO. 3 PORT NO. 2 PORT NO. 1 PORT

STERN



BOW

STARBOARD

NO. 7 STB. NO. 6 STB. NO. 5 STB. NO. 4 STB. NO. 3 STB. NO. 2 STB. NO. 1 STB.

NO DESCRIPTION

- 1C CARGO TANK VALVE
- 5C HEADER VALVE
- 13C CARGO PIPING BLOCK VALVE
- 19C CARGO HEADER
- 30C CARGO PIPELINE
- 35C CROSSOVER VALVE
- 36C PRESSURE GAUGE
- 37C CARGO DROP
- 56C PRESSURE RELIEF VALVE

— ABOVE DECK PIPING

CARUTHERSVILLE SHIPYARD EX: HW CHEM 163

KIRBY INLAND MARINE 

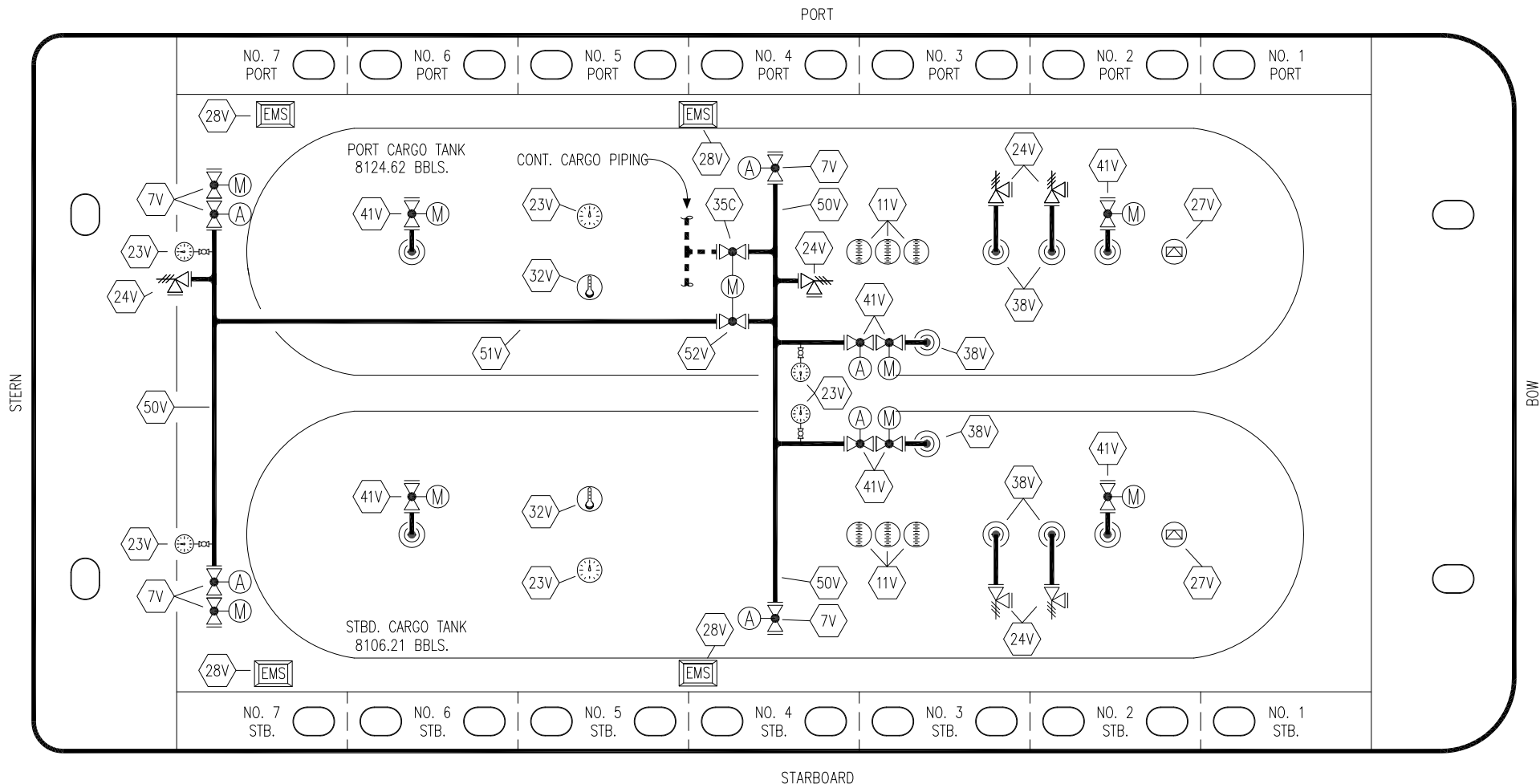
**CARGO  
PIPING FLOW DIAGRAM**


| REV. | DATE     | BY  | CHK | APP | REVISION DESCRIPTION        |
|------|----------|-----|-----|-----|-----------------------------|
| 1    | 02/21/20 | MRV | DDA |     | REVISED PER CLIENT COMMENTS |
| 0    | 03/02/09 | RB  | RB  | OF  | APPROVED                    |

SCALE: NONE  
PAGE: 1 OF 2

**KIRBY 16800**

REV. **1**



|           |                       |   |                    |
|-----------|-----------------------|---|--------------------|
| <b>NO</b> | <b>DESCRIPTION</b>    | <b>NO</b>   | <b>DESCRIPTION</b> |
| 7V        | HEADER VALVE          | 41V   | VAPOR TANK VALVE   |
| 11V       | 1 METER GAUGE STICK   | 50V   | VAPOR HEADER       |
| 23V       | PRESSURE GAUGE        | 51V   | VAPOR PIPELINE     |
| 24V       | PRESSURE RELIEF VALVE | 52V   | BLOCK VALVE        |
| 27V       | SPEW VALVE            |  | ABOVE DECK PIPING  |
| 28V       | EMERGENCY SHUT DOWN   |   |                    |
| 32V       | TEMPERATURE GAUGE     |   |                    |
| 35C       | CROSSOVER VALVE       |   |                    |
| 38V       | VAPOR DROP            |   |                    |

CARUTHERSVILLE SHIPYARD EX: HW CHEM 163

**KIRBY INLAND MARINE** 

**VAPOR  
PIPING FLOW DIAGRAM**

|      |          |     |     |     |                             |
|------|----------|-----|-----|-----|-----------------------------|
| 1    | 02/21/20 | MRV | DDA |     | REVISED PER CLIENT COMMENTS |
| 0    | 03/02/09 | RB  | RB  | OF  | APPROVED                    |
| REV. | DATE     | BY  | CHK | APP | REVISION DESCRIPTION        |

SCALE: NONE  
PAGE: 2 OF 2

**KIRBY 16800**

REV. **1**