

PORT

NO. 4
PORT

NO. 3
PORT

NO. 2
PORT

NO. 1
PORT

NOTE: RIGGING IS TYPICAL IN EACH TANK

PORT CARGO TANK
5019.14 BBLs.

CENTER CARGO TANK
5023.38 BBLs.

STARBOARD CARGO TANK
5028.17 BBLs.

STERN

BOW



NO. 4
STB

NO. 3
STB

NO. 2
STB

NO. 1
STB

STARBOARD

NO	DESCRIPTION	NO	DESCRIPTION
2C	LOAD VALVE	37C	CARGO DROP 
4C	DISCHARGE VALVE	56C	PRESSURE RELIEF VALVE
5C	HEADER VALVE	57C	LIQUID PIPELINE RELIEF VALVE
13C	CARGO PIPING BLOCK VALVE		ABOVE DECK PIPING
19C	CARGO HEADER	(M)	MANUAL
20C	DUMMY HEADER PIPING	(A)	AUTOMATIC
21C	DUMMY HEADER VALVE		
30C	CARGO PIPELINE		
36C	PRESSURE GAUGE		

MC DERMOTT - EX: HW CHEM 156

KIRBY INLAND MARINE 

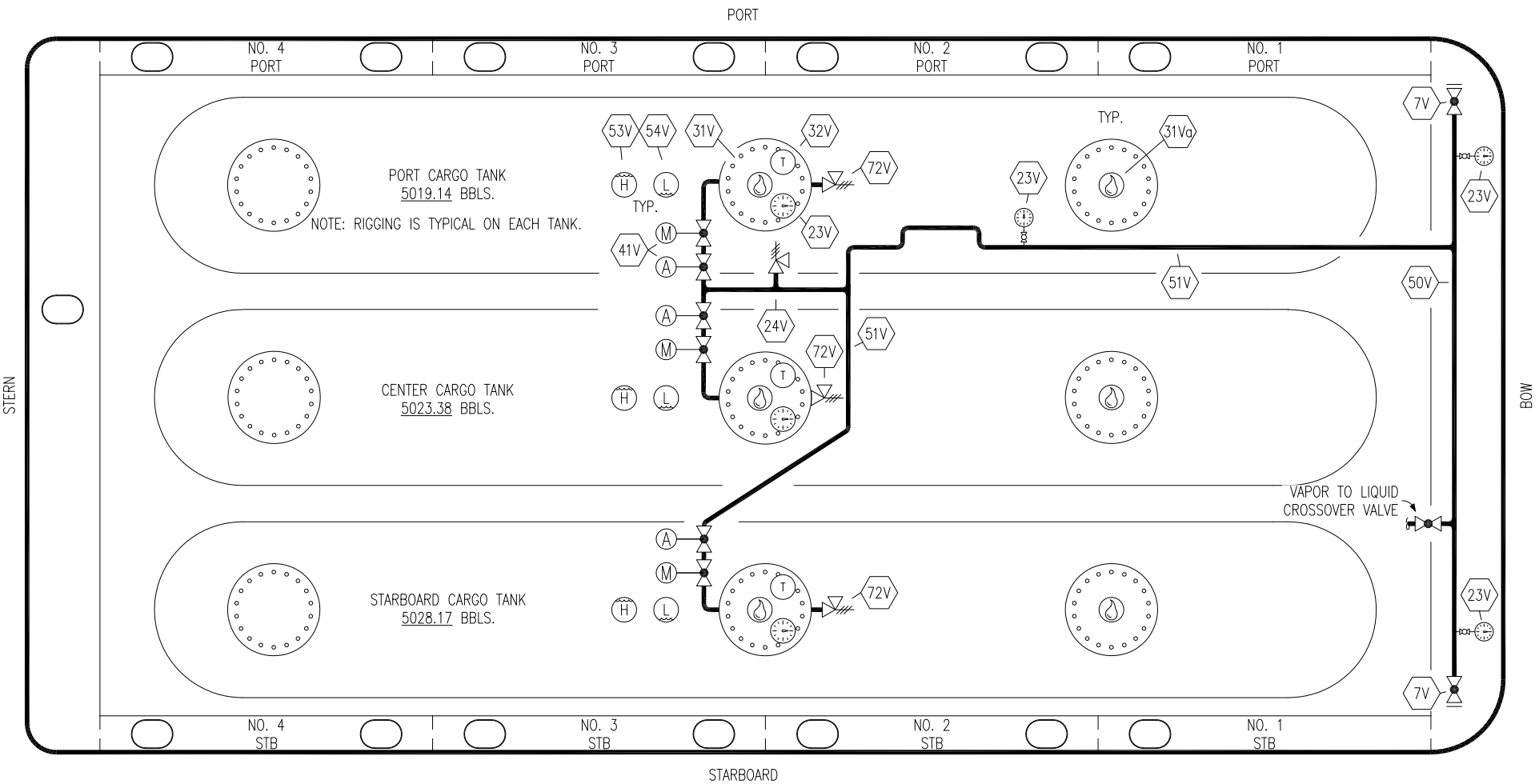
**CARGO
PIPING FLOW DIAGRAM**


1	04/07/20	MRV	DDA		REVISED PER CLIENT COMMENTS
0	10/26/09	FP	RB	OF	APPROVED
REV.	DATE	BY	CHK	APP	REVISION DESCRIPTION


SCALE: NONE
PAGE: 1 OF 2

KIRBY 15806

REV. **1**



- | NO | DESCRIPTION |
|------|---|
| 7V | HEADER VALVE |
| 23V | PRESSURE GAUGE |
| 24V | PRESSURE RELIEF VALVE |
| 31V | SAMPLE |
| 31Va | BOTTOM SAMPLE |
| 32V | TEMPERATURE GAUGE |
| 38V | VAPOR PENETRATION  |
| 40V | SAMPLE VALVE |
| 41V | VAPOR TANK VALVE |

- | NO | DESCRIPTION |
|---|---------------------|
| 50V | VAPOR HEADER |
| 51V | VAPOR PIPELINE |
| 53V | HIGH LEVEL GAUGE |
| 54V | LOW LEVEL GAUGE |
| 72V | SAFETY RELIEF VALVE |
|  | ABOVE DECK PIPING |
| (M) | MANUAL |
| (A) | AUTOMATIC |

MC DERMOTT – EX: HW CHEM 156

KIRBY INLAND MARINE 

**VAPOR
PIPING FLOW DIAGRAM**

1	04/07/20	MRV	DDA		REVISED PER CLIENT COMMENTS
0	10/26/09	FP	RB	OF	APPROVED
REV.	DATE	BY	CHK	APP	REVISION DESCRIPTION

SCALE: NONE
PAGE: 2 OF 2

KIRBY 15806 REV. **1**