

PORT

NO. 4
PORT

NO. 3
PORT

NO. 2
PORT

NO. 1
PORT

PORT CARGO TANK
5016.38 BBLs.

CENTER CARGO TANK
5016.17 BBLs.

STARBOARD CARGO TANK
5026.33 BBLs.

NOTE: RIGGING IS TYPICAL IN EACH TANK

STERN

BOW



NO. 4
STB

NO. 3
STB

NO. 2
STB

NO. 1
STB

STARBOARD

NO	DESCRIPTION	NO	DESCRIPTION
2C	LOAD VALVE	37C	CARGO DROP 
4C	DISCHARGE VALVE	56C	PRESSURE RELIEF VALVE
5C	HEADER VALVE	57C	LIQUID PIPELINE RELIEF VALVE
13C	CARGO PIPING BLOCK VALVE		ABOVE DECK PIPING
19C	CARGO HEADER	(M)	MANUAL
20C	DUMMY HEADER PIPING	(A)	AUTOMATIC
21C	DUMMY HEADER VALVE		
30C	CARGO PIPELINE		
36C	PRESSURE GAUGE		

0	05/06/20	MRV	DDA	ISSUED FOR APPROVAL
REV.	DATE	BY	CHK	APP
				REVISION DESCRIPTION

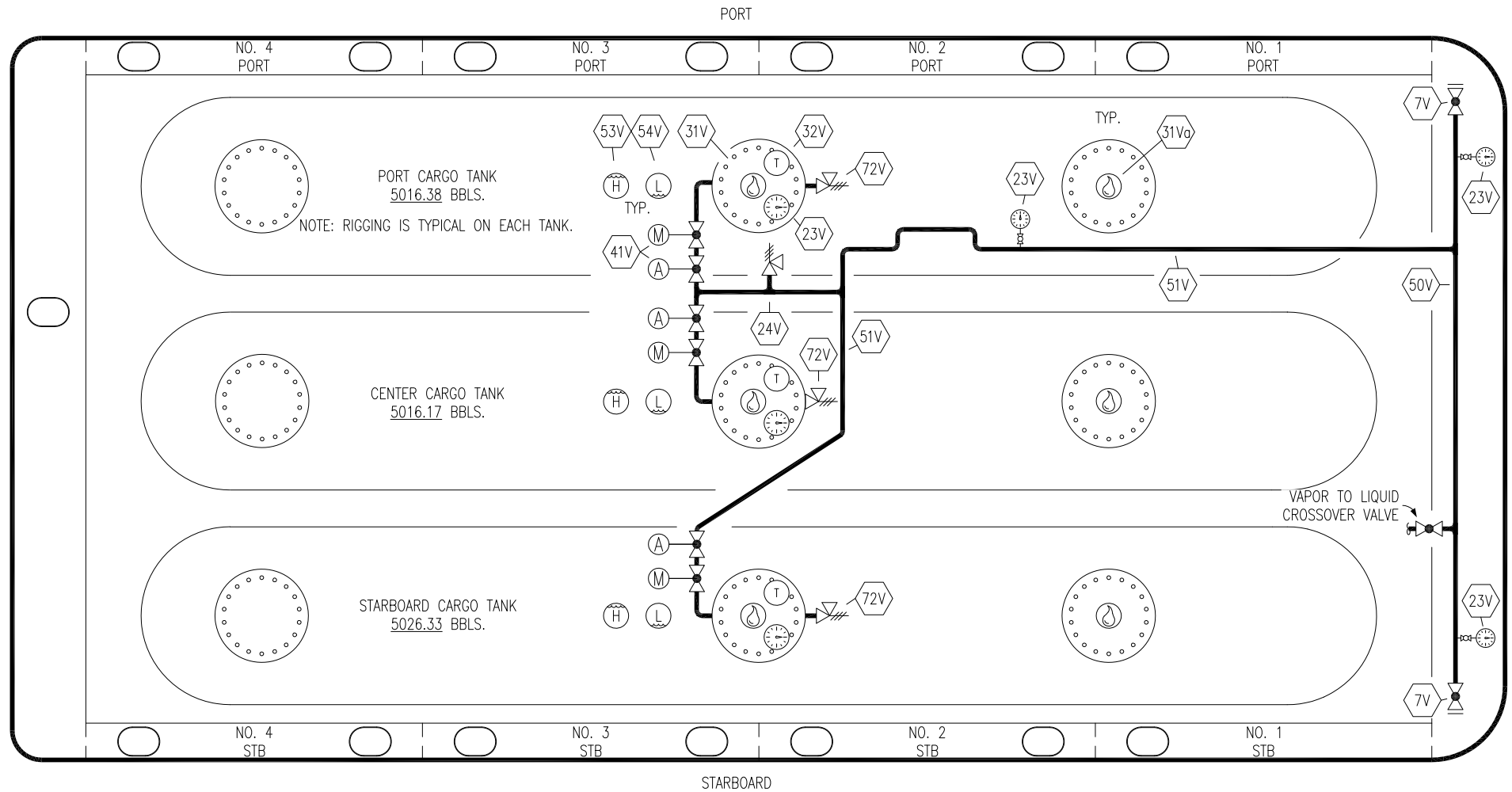
KIRBY INLAND MARINE 

**CARGO
PIPING FLOW DIAGRAM**

SCALE: NONE
PAGE: 1 OF 2

KIRBY 15801

REV. **0**



- | | |
|------|-----------------------|
| NO | DESCRIPTION |
| 7V | HEADER VALVE |
| 23V | PRESSURE GAUGE |
| 24V | PRESSURE RELIEF VALVE |
| 31V | SAMPLE |
| 31Vo | BOTTOM SAMPLE |
| 32V | TEMPERATURE GAUGE |
| 38V | VAPOR PENETRATION |
| 40V | SAMPLE VALVE |
| 41V | VAPOR TANK VALVE |

- | | |
|-----|---------------------|
| NO | DESCRIPTION |
| 50V | VAPOR HEADER |
| 51V | VAPOR PIPELINE |
| 53V | HIGH LEVEL GAUGE |
| 54V | LOW LEVEL GAUGE |
| 72V | SAFETY RELIEF VALVE |
| | ABOVE DECK PIPING |
| (M) | MANUAL |
| (A) | AUTOMATIC |

0	05/06/20	MRV	DDA	ISSUED FOR APPROVAL
REV.	DATE	BY	CHK	APP
				REVISION DESCRIPTION

KIRBY INLAND MARINE

**VAPOR
PIPING FLOW DIAGRAM**

SCALE: NONE	KIRBY 15801	REV. 0
PAGE: 2 OF 2		