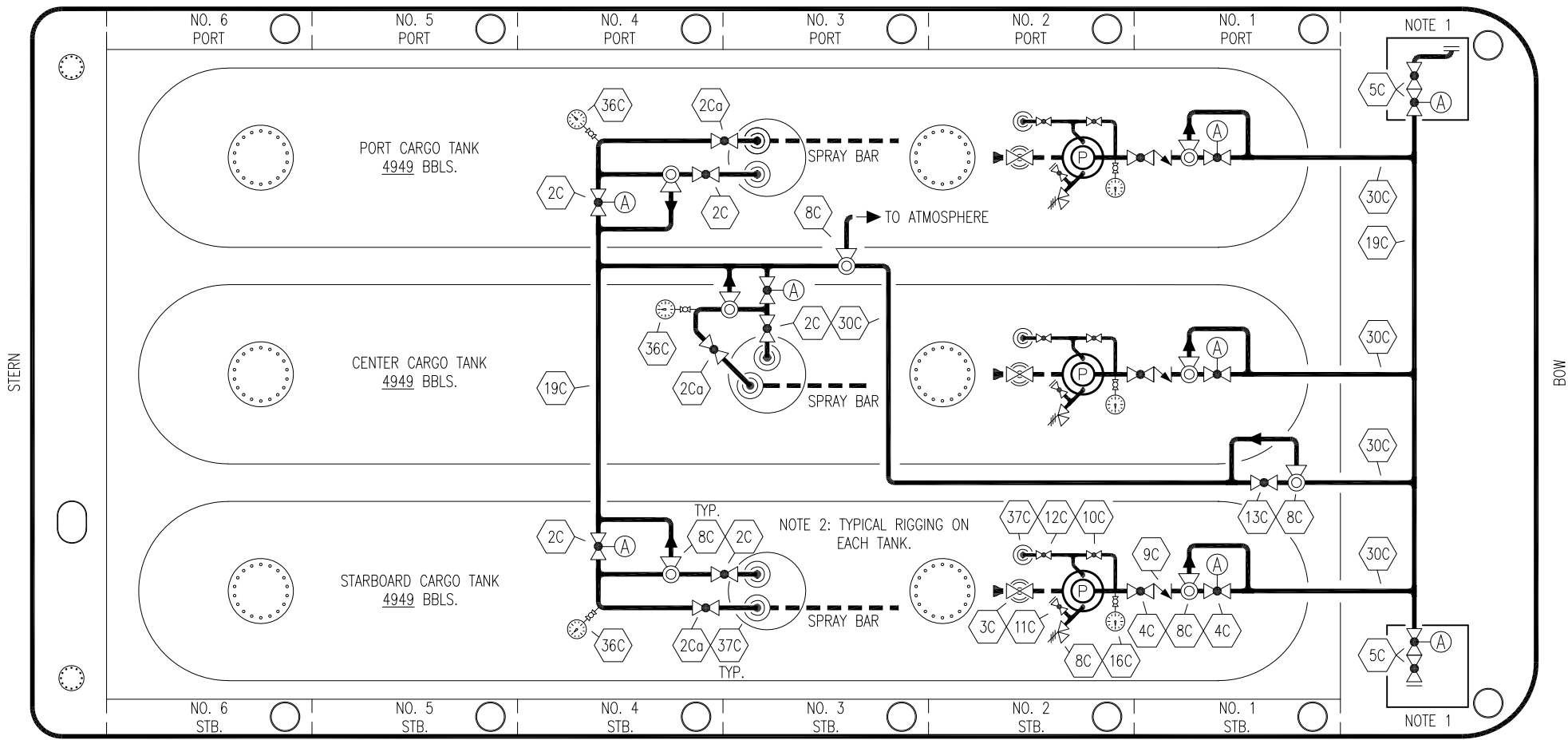


PORT



STARBOARD

NO	DESCRIPTION	NO	DESCRIPTION
2C	LOAD VALVE (BOTTOM FILL)	13C	CARGO PIPING BLOCK VALVE
2Ca	LOAD VALVE (SPRAY BAR)	16C	DISCHARGE PRESSURE GAUGE
3C	MASTER SUCTION VALVE	19C	CARGO HEADER
4C	DISCHARGE VALVE	30C	CARGO PIPELINE
5C	HEADER VALVE	36C	PRESSURE GAUGE
8C	RELIEF VALVE	37C	CARGO DROP
9C	CHECK VALVE	(A)	AUTOMATIC
10C	BURP VALVE	—	— ABOVE DECK PIPING
11C	BLEED OFF VALVE	---	--- BELOW DECK PIPING
12C	BURP VALVE RETURN TO CARGO TANK		

NOTE 1: CONTAINMENT P&S
NOTE 2: TYPICAL RIGGING ON EACH TANK

MISENER SHIPYARD – EX: DC 535

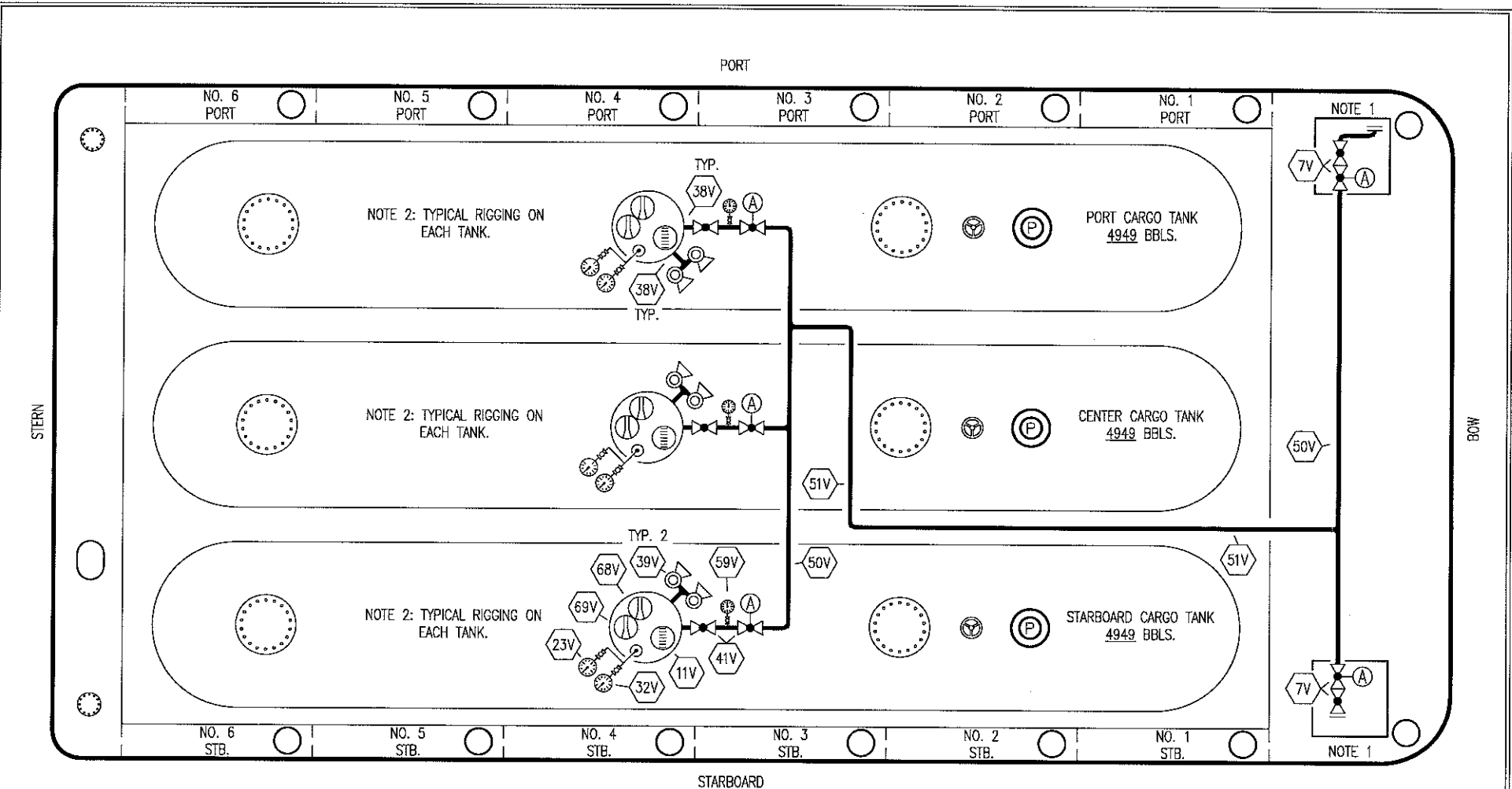
KIRBY INLAND MARINE 

CARGO
PIPING FLOW DIAGRAM

REV.	DATE	BY	CHK	APP	REVISION DESCRIPTION
2	10/15/19	NRB	DDA		REVISED PER CLIENT COMMENTS
1	10/05/16	MRV	DDA		REVISED PER CLIENT COMMENTS
0	01/11/10	RB	RB	OF	APPROVED

SCALE: NONE
PAGE: 1 OF 2

KIRBY 14804 REV. **2**



- | | | | |
|-----|-----------------------|-----|-----------------------|
| NO | DESCRIPTION | NO | DESCRIPTION |
| 7V | HEADER VALVE | 51V | VAPOR PIPELINE |
| 11V | GAUGE STICK | 59V | PRESS/VAC GAUGE |
| 23V | PRESSURE GAUGE | 68V | LOW LEVEL SPRAY TUBE |
| 32V | TEMPERATURE GAUGE | 69V | HIGH LEVEL SPRAY TUBE |
| 38V | VAPOR PENETRATION (⊙) | (A) | AUTOMATIC VALVE |
| 39V | PRESSURE/VACUUM VALVE | — | ABOVE DECK PIPING |
| 41V | VAPOR TANK VALVE | | |
| 50V | VAPOR HEADER | | |

NOTE 1: CONTAINMENT P&S
NOTE 2: TYPICAL RIGGING ON EACH TANK

MISENER SHIPYARD — EX: DC 535

1	10/05/16	MRV	DDA		REVISED PER CLIENT COMMENTS
0	01/11/10	RB	RB	OF	APPROVED
REV.	DATE	BY	CHK	APP	REVISION DESCRIPTION

KIRBY INLAND MARINE

**VAPOR
PIPING FLOW DIAGRAM**

SCALE: NONE
PAGE: 2 OF 2

KIRBY 14804

REV. **1**