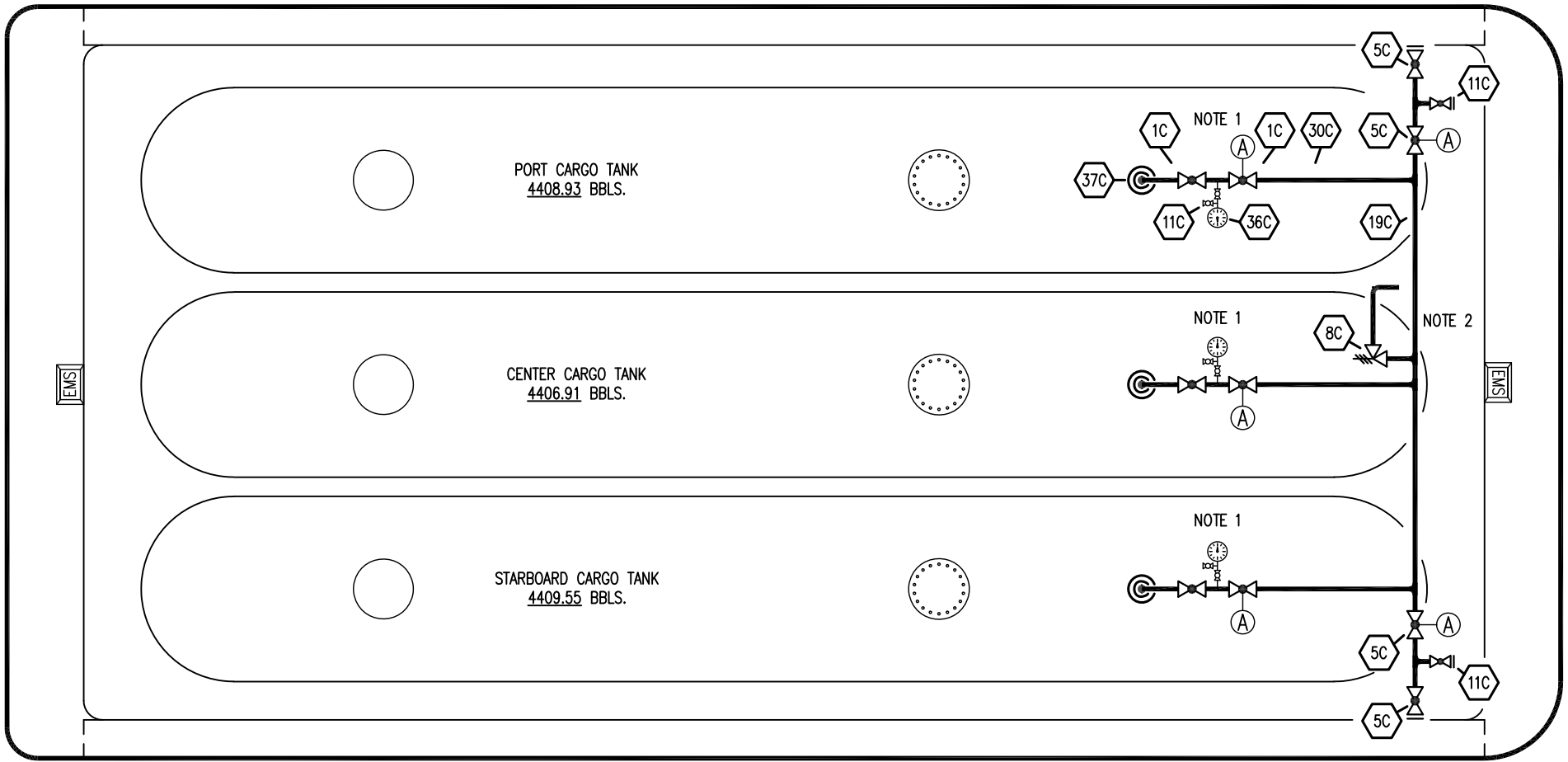


PORT

STERN

BOW

STARBOARD



- | NO  | DESCRIPTION       |
|-----|-------------------|
| 1C  | CARGO TANK VALVE  |
| 5C  | HEADER VALVE      |
| 8C  | RELIEF VALVE      |
| 11C | BLEED OFF VALVE   |
| 19C | CARGO HEADER      |
| 30C | CARGO PIPELINE    |
| 36C | PRESSURE GAUGE    |
| 37C | CARGO DROP        |
| (A) | AUTOMATIC         |
| —   | ABOVE DECK PIPING |

NOTE 1: TYPICAL RIGGING ON EACH TANK.

NOTE 2: P/V VENT TO ATMOSPHERE

INGALLS - EX: USL 127

REV.	DATE	BY	CHK	APP	REVISION DESCRIPTION
2	02/06/23	MRV	DDA	DAR	REVISED PER CLIENT COMMENTS
1	04/29/22	MRV	DDA	DR	REVISED PER CLIENT COMMENTS
0	01/25/10	LT	RB	OF	APPROVED

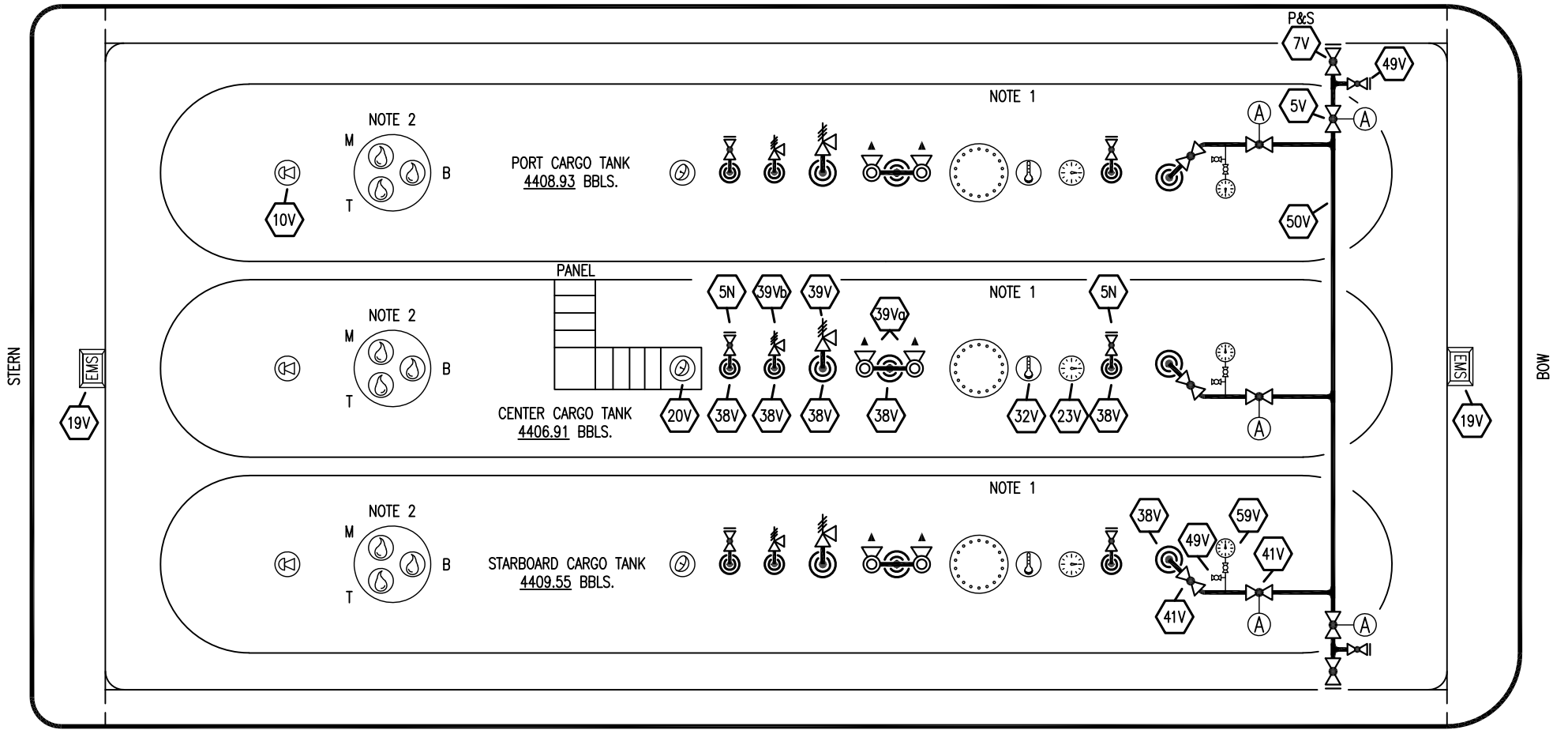
**KIRBY INLAND MARINE** 

**CARGO  
PIPING FLOW DIAGRAM**

SCALE: NONE  
PAGE: 1 OF 3

**KIRBY 13825B** REV. **2**

PORT



STARBOARD

- |     |                           |
|-----|---------------------------|
| NO  | DESCRIPTION               |
| 5N  | N2 SUPPLY VALVE           |
| 7V  | HEADER VALVE              |
| 10V | HIGH LEVEL/OVERFILL ALARM |
| 19V | EMERGENCY SHUT DOWN       |
| 20V | RADAR GAUGING             |
| 23V | PRESSURE GAUGE            |
| 31V | SAMPLE STATIONS           |
| 32V | TEMPERATURE GAUGE         |
| 38V | VAPOR PENETRATION         |
| 39V | PRESSURE/VACUUM VALVE     |

- |      |                       |
|------|-----------------------|
| NO   | DESCRIPTION           |
| 39Vg | PRESSURE/VACUUM VALVE |
| 39Vb | SRV VALVE             |
| 41V  | VAPOR TANK VALVE      |
| 49V  | BLEED VALVE           |
| 50V  | VAPOR HEADER          |
| 51V  | VAPOR PIPELINE        |
| 59V  | PRESS/VAC GAUGE       |
| (A)  | AUTOMATIC             |
| —    | ABOVE DECK PIPING     |

NOTE 1: TYPICAL RIGGING ON EACH TANK  
 NOTE 2: SAMPLES-T=TOP, M=MIDDLE, B=BOTTOM

INGALLS - EX: USL 127

REV.	DATE	BY	CHK	APP	REVISION DESCRIPTION
2	02/06/23	MRV	DDA	DAR	REVISED PER CLIENT COMMENTS
1	04/29/22	MRV	DDA	DR	REVISED PER CLIENT COMMENTS
0	01/25/10	LT	RB	OF	APPROVED

KIRBY INLAND MARINE

VAPOR  
PIPING FLOW DIAGRAM

KIRBY 13825B

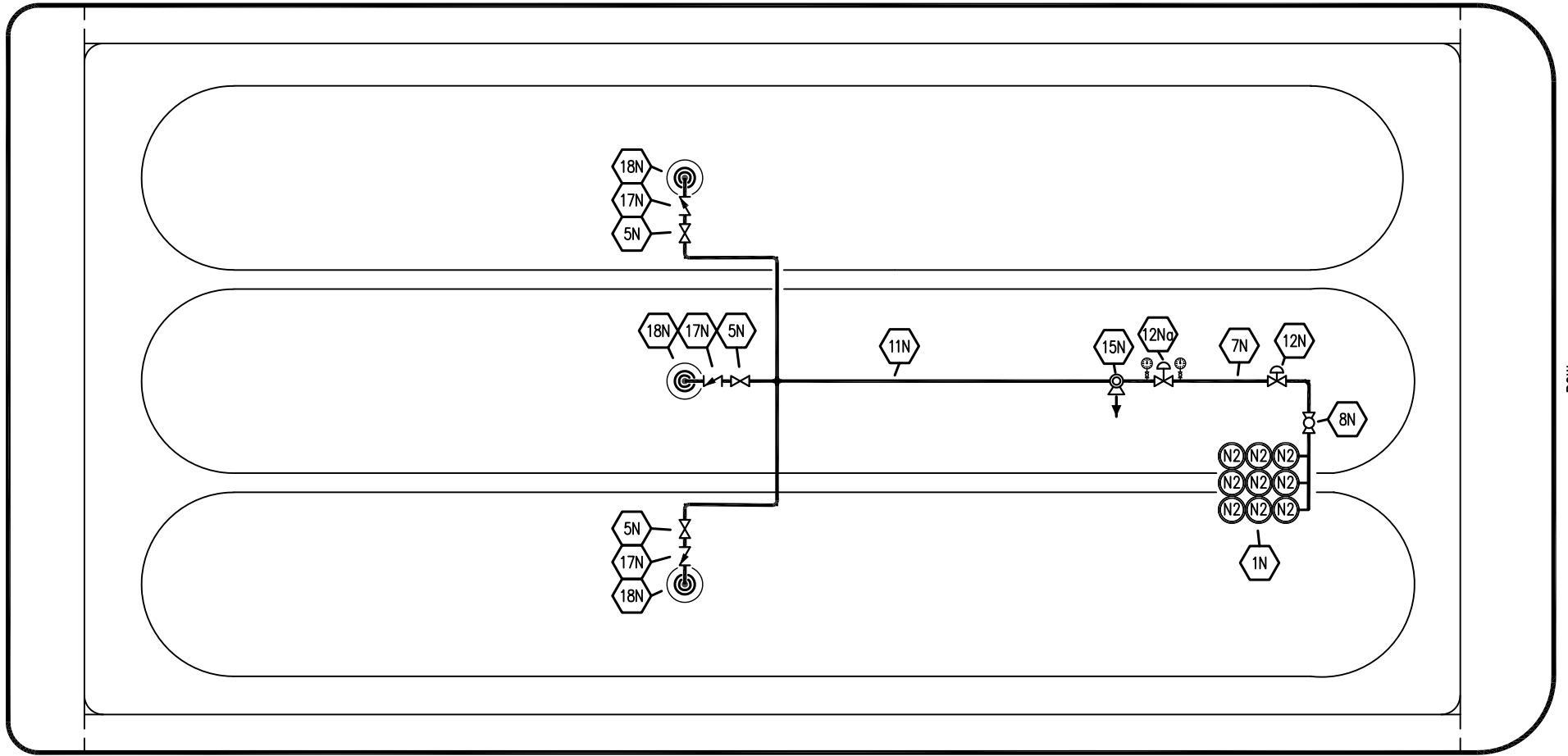
REV. 2

SCALE: NONE  
PAGE: 2 OF 3

PORT

STERN

BOW



STARBOARD

- | NO   | DESCRIPTION                  |
|------|------------------------------|
| 1N   | NITROGEN BOTTLE RACK (9 PK.) |
| 5N   | N2 SUPPLY VALVE              |
| 7N   | NITROGEN HEADER              |
| 8N   | N2 REGULATOR CONTROL VALVE   |
| 11N  | NITROGEN PIPELINE            |
| 12N  | HARRIS NITROGEN REGULATOR    |
| 12Na | FISHER NITROGEN REGULATOR    |
| 15N  | N2 RELIEF VALVE              |
| 17N  | N2 CHECK VALVE               |
| 18N  | N2 TANK PENETRATION (⊙)      |

— ABOVE DECK PIPING

INGALLS – EX: USL 127

**KIRBY INLAND MARINE** 

**NITROGEN  
PIPING FLOW DIAGRAM**

REV.	DATE	BY	CHK	APP	REVISION DESCRIPTION
2	02/06/23	MRV	DDA	DAR	REVISED PER CLIENT COMMENTS
1	04/29/22	MRV	DDA	DR	REVISED PER CLIENT COMMENTS
0	01/25/10	LT	RB	OF	APPROVED

SCALE: NONE  
PAGE: 3 OF 3

**KIRBY 13825B** REV. **2**