

NO	DESCRIPTION	NO	DESCRIPTION
1C	CARGO TANK VALVE	13C	CARGO PIPING BLOCK VALVE
2C	LOAD VALVE	19C	CARGO HEADER
3C	MASTER SUCTION VALVE	24C	FLOW INDICATOR
4C	DISCHARGE VALVE	30C	CARGO PIPELINE
5C	HEADER VALVE	36C	PRESSURE GAUGE
6C	SALVAGE VALVE	37C	CARGO DROP ☉
8C	RELIEF VALVE	10V	HIGH LEVEL/OVERFILL ALARM
10C	BURP VALVE	11V	GAUGE STICK
11C	BLEED OFF VALVE	17V	BUTTERWORTH
12C	BURP VALVE RETURN TO CARGO TANK	21V	HERMETIC GAUGE

NOTE 1: CONTAINMENT AREA
 NOTE 2: HATCH HANDLES REQUIRED
 ——— ABOVE DECK PIPING
 - - - BELOW DECK PIPING

TRINITY MARINE

KIRBY INLAND MARINE

CARGO PIPING FLOW DIAGRAM

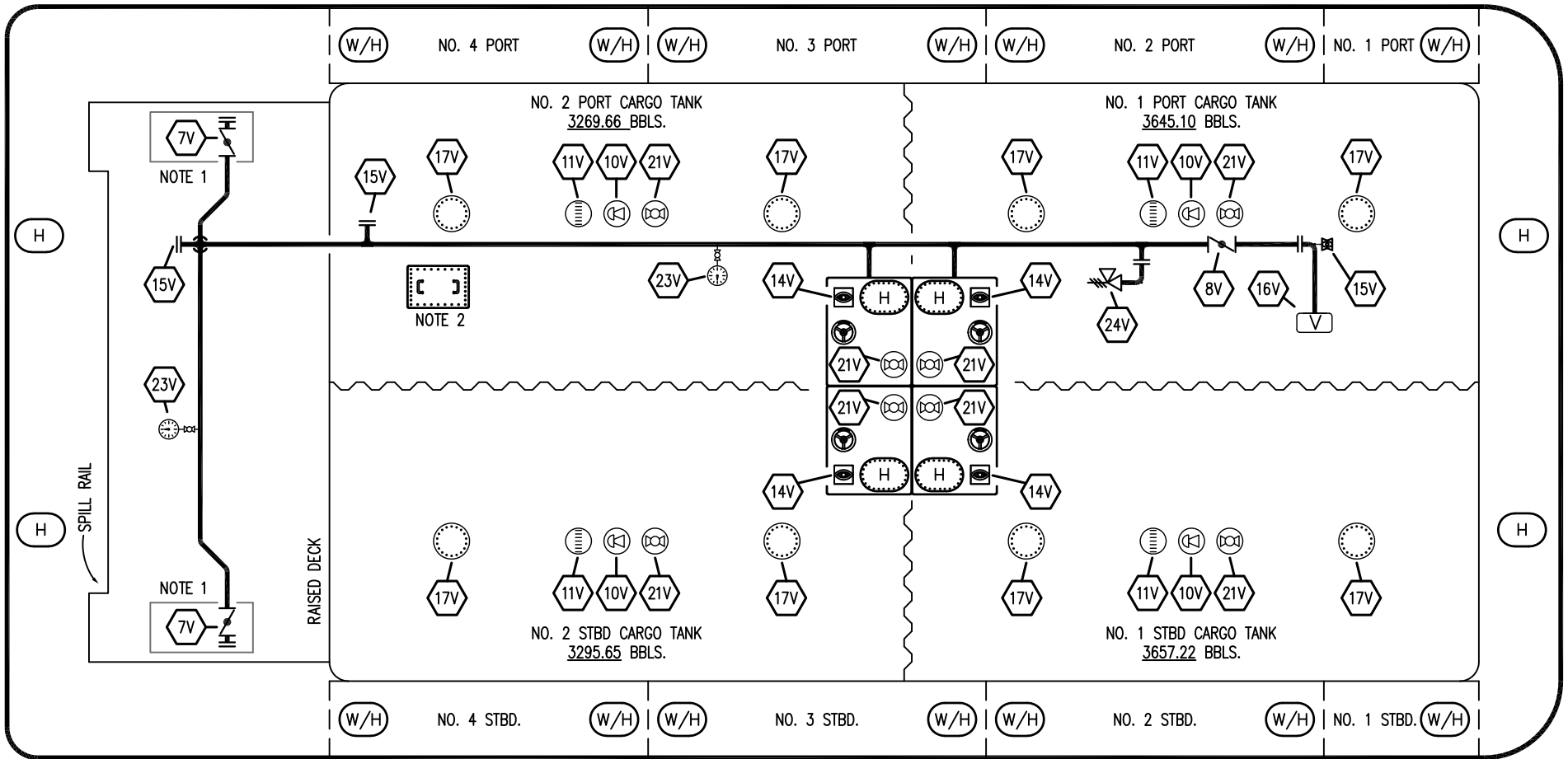
REV.	DATE	BY	CHK	APP	REVISION DESCRIPTION
1	03/27/24	AC	DDA	FIX	REVISED PER CLIENT COMMENTS
0	04/01/09	WK	RB	OF	APPROVED

SCALE: NONE
 PAGE: 1 OF 3

KIRBY 13022B REV. **1**

STERN

BOW



- | NO | DESCRIPTION |
|-----|---------------------------|
| 7V | HEADER VALVE |
| 8V | VENT STACK VALVE |
| 10V | HIGH LEVEL/OVERFILL ALARM |
| 11V | GAUGE STICK |
| 14V | SIGHT GLASS |
| 15V | INSPECTION PORT |
| 16V | VAPOR VENT STACK |
| 17V | BUTTERWORTH |
| 21V | HERMETIC GAUGE |
| 23V | PRESSURE GAUGE |

- | NO | DESCRIPTION |
|-----|-----------------------|
| 24V | PRESSURE RELIEF VALVE |
| 50V | VAPOR HEADER |
| 51V | VAPOR PIPELINE |
| | ABOVE DECK PIPING |

NOTE 1: CONTAINMENT AREA
NOTE 2: HATCH HANDLES REQUIRED

TRINITY MARINE

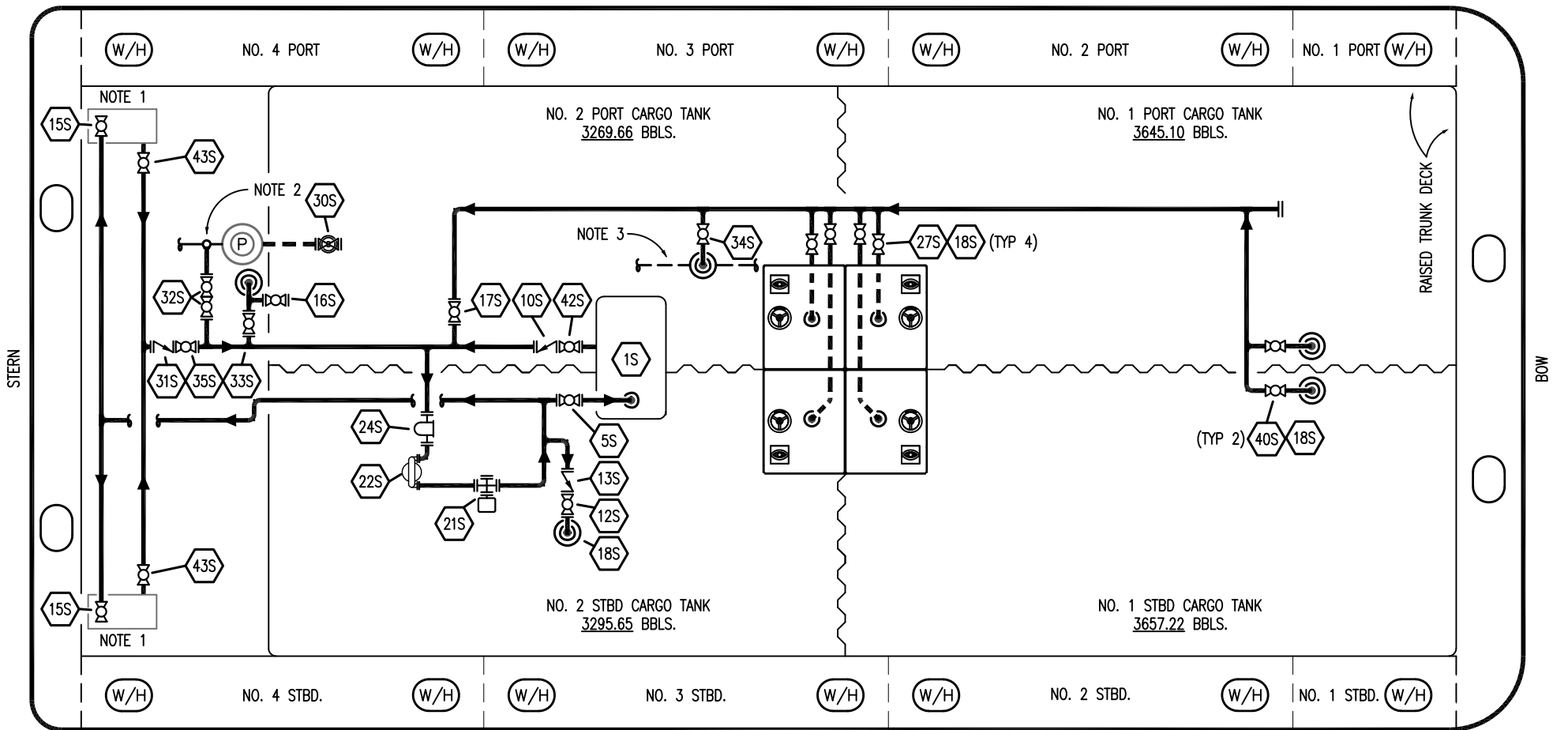
KIRBY INLAND MARINE

VAPOR PIPING FLOW DIAGRAM

1	03/27/24	AC	DDA	FIX	REVISED PER CLIENT COMMENTS
0	04/01/09	WK	RB	OF	APPROVED
REV.	DATE	BY	CHK	APP	REVISION DESCRIPTION

SCALE: NONE
PAGE: 2 OF 3

KIRBY 13022B REV. **1**



NO	DESCRIPTION
1S	SLOP TANK
5S	SLOP TANK SUCTION VALVE
7S	SLOP TANK VALVE
10S	SLOP TANK CHECK VALVE
12S	RETURN TO CARGO TANK VALVE
13S	RETURN TO CARGO CHECK VALVE
15S	DISCHARGE CARGO VALVE
16S	REMOTE SUCTION CONNECTION
17S	FORWARD CARGO TANK ISOLATION
18S	TYP. STRIPPING PENETRATION (TYP 2)
21S	PRIMING POT

NO	DESCRIPTION
22S	STRIPPING PUMP
24S	BASKET STRAINER
27S	SUMP SUCTION
30S	PUMP CAN DRAIN VALVE
31S	CHECK VALVE
32S	PUMP WELL PRIMER VALVE
33S	PUMP WELL SUCTION
34S	PIPELINE LOWER POINT SUCTION
35S	STRIPPING VALVE
36S	STRIPPING PUMP DISCHARGE
40S	CARGO TANK SUCTION

NO	DESCRIPTION
42S	SLOP TANK DISCHARGE VALVE
43S	DRIP PAN SUCTION VALVE
—	— ABOVE DECK PIPING
- - -	- - - BELOW DECK PIPING

NOTE 1: CONTAINMENT P/S
 NOTE 2: CONNECT TO CARGO RELIEF DISCHARGE LINE
 NOTE 3: CONNECT TO CARGO PIPELINE

TRINITY MARINE

KIRBY INLAND MARINE

STRIPPING PIPING FLOW DIAGRAMS

REV.	DATE	BY	CHK	APP	REVISION DESCRIPTION
1	03/27/24	AC	DDA	FIX	REVISED PER CLIENT COMMENTS
0	04/01/09	WK	RB	AB	APPROVED

SCALE: NONE
 PAGE: 3 OF 3

KIRBY 13022B REV. 1