

NO	DESCRIPTION	NO	DESCRIPTION
1B	BALLAST TANK VALVE	13C	CARGO PIPING BLOCK VALVE
1C	CARGO TANK VALVE	19C	CARGO HEADER
2C	LOAD VALVE	24C	FLOW INDICATOR
3C	MASTER SUCTION VALVE	30C	CARGO PIPELINE
4C	DISCHARGE VALVE	36C	PRESSURE GAUGE
5C	HEADER VALVE	37C	CARGO DROP
6C	SALVAGE VALVE	10V	HIGH LEVEL/OVERFILL ALARM
8C	RELIEF VALVE	11V	GAUGE STICK
10C	BURP VALVE	17V	BUTTERWORTH
11C	BLEED OFF VALVE	21V	HERMETIC GAUGE
12C	BURP VALVE RETURN TO CARGO TANK		

NOTE 1: CONTAINMENT AREA
 NOTE 2: HATCH HANDLES REQUIRED
 — ABOVE DECK PIPING
 - - - BELOW DECK PIPING

TRINITY MARINE

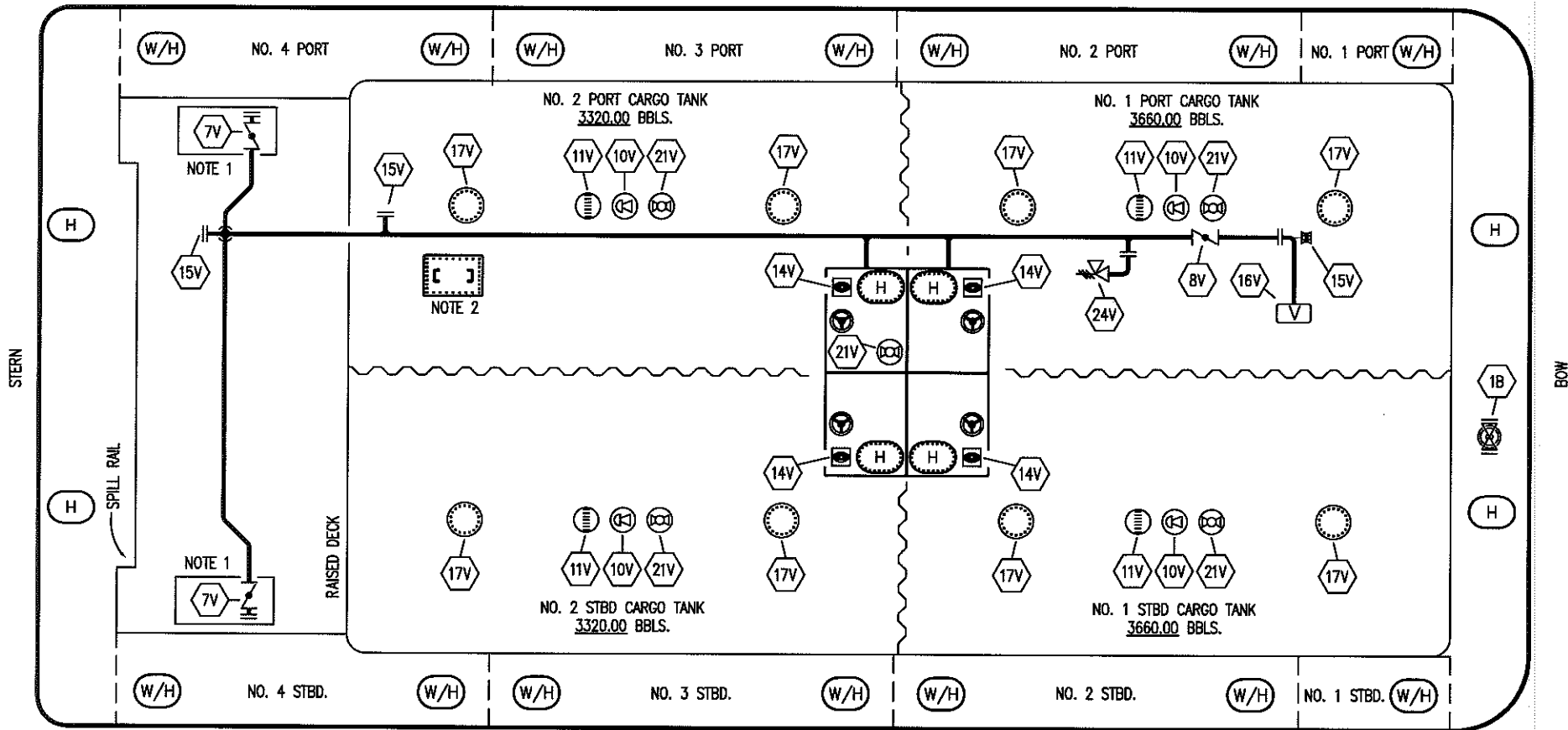
KIRBY INLAND MARINE 

CARGO PIPING FLOW DIAGRAM

REV.	DATE	BY	CHK	APP	REVISION DESCRIPTION
1	04/16/15	WFB	DDA		REVISED PER CLIENT COMMENTS
0	04/01/09	WK	RB	OF	APPROVED

SCALE: NONE
 PAGE: 1 OF 3

KIRBY 13021B REV. **1**



- | | | | |
|-----|---------------------------|-----|-----------------------|
| NO | DESCRIPTION | NO | DESCRIPTION |
| 1B | BALLAST TANK VALVE | 16V | VAPOR VENT STACK |
| 7V | HEADER VALVE | 17V | BUTTERWORTH |
| 8V | VENT STACK VALVE | 21V | HERMETIC GAUGE |
| 10V | HIGH LEVEL/OVERFILL ALARM | 24V | PRESSURE RELIEF VALVE |
| 11V | GAUGE STICK | 50V | VAPOR HEADER |
| 14V | SIGHT GLASS | 51V | VAPOR PIPELINE |
| 15V | INSPECTION PORT | — | ABOVE DECK PIPING |

NOTE 1: CONTAINMENT AREA
 NOTE 2: HATCH HANDLES REQUIRED

TRINITY MARINE

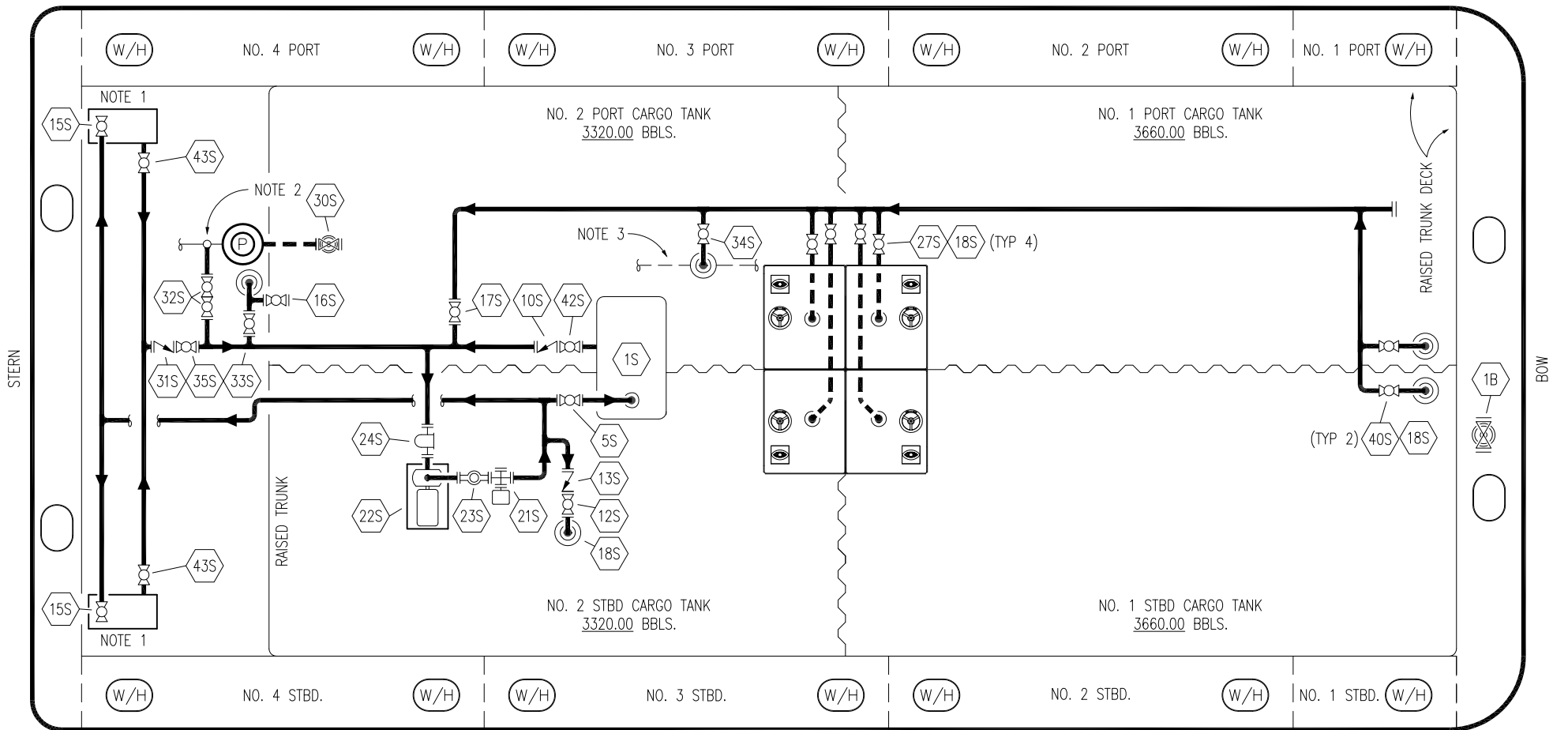
REV.	DATE	BY	CHK	APP	REVISION DESCRIPTION
1	04/16/15	WFB	DDA		REVISED PER CLIENT COMMENTS
0	04/01/09	WK	RB	OF	APPROVED

KIRBY INLAND MARINE 

**VAPOR
 PIPING FLOW DIAGRAM**

SCALE: NONE
 PAGE: 2 OF 3

KIRBY 13021B REV. **1**



NO	DESCRIPTION	NO	DESCRIPTION	NO	DESCRIPTION
1B	BALLAST TANK VALVE	21S	PRIMING POT	36S	STRIPPING PUMP DISCHARGE
1S	SLOP TANK	22S	STRIPPING PUMP	40S	CARGO TANK SUCTION
5S	SLOP TANK SUCTION VALVE	23S	FLOW INDICATOR	42S	SLOP TANK DISCHARGE VALVE
7S	SLOP TANK VALVE	24S	BASKET STRAINER	43S	DRIP PAN SUCTION VALVE
10S	SLOP TANK CHECK VALVE	27S	SUMP SUCTION		
12S	RETURN TO CARGO TANK VALVE	30S	PUMP CAN DRAIN VALVE		
13S	RETURN TO CARGO CHECK VALVE	31S	CHECK VALVE		
15S	DISCHARGE CARGO VALVE	32S	PUMP WELL PRIMER VALVE		
16S	REMOTE SUCTION CONNECTION	33S	PUMP WELL SUCTION		
17S	FORWARD CARGO TANK ISOLATION	34S	PIPELINE LOWER POINT SUCTION		
18S	TYP. STRIPPING PENETRATION	35S	STRIPPING VALVE		

NOTE 1: CONTAINMENT P/S
 NOTE 2: CONNECT TO CARGO RELIEF DISCHARGE LINE
 NOTE 3: CONNECT TO CARGO PIPELINE

— ABOVE DECK PIPING
 - - - BELOW DECK PIPING

TRINITY MARINE

REV.	DATE	BY	CHK	APP	REVISION DESCRIPTION
2	05/03/21	MRV	DDA		REVISED PER CLIENT COMMENTS
1	04/16/15	WFB	DDA		REVISED PER CLIENT COMMENTS
0	04/01/09	WK	RB	AB	APPROVED

KIRBY INLAND MARINE

STRIPPING
PIPING FLOW DIAGRAMS

KIRBY 13021B

REV. 2

SCALE: NONE
PAGE: 3 OF 3