

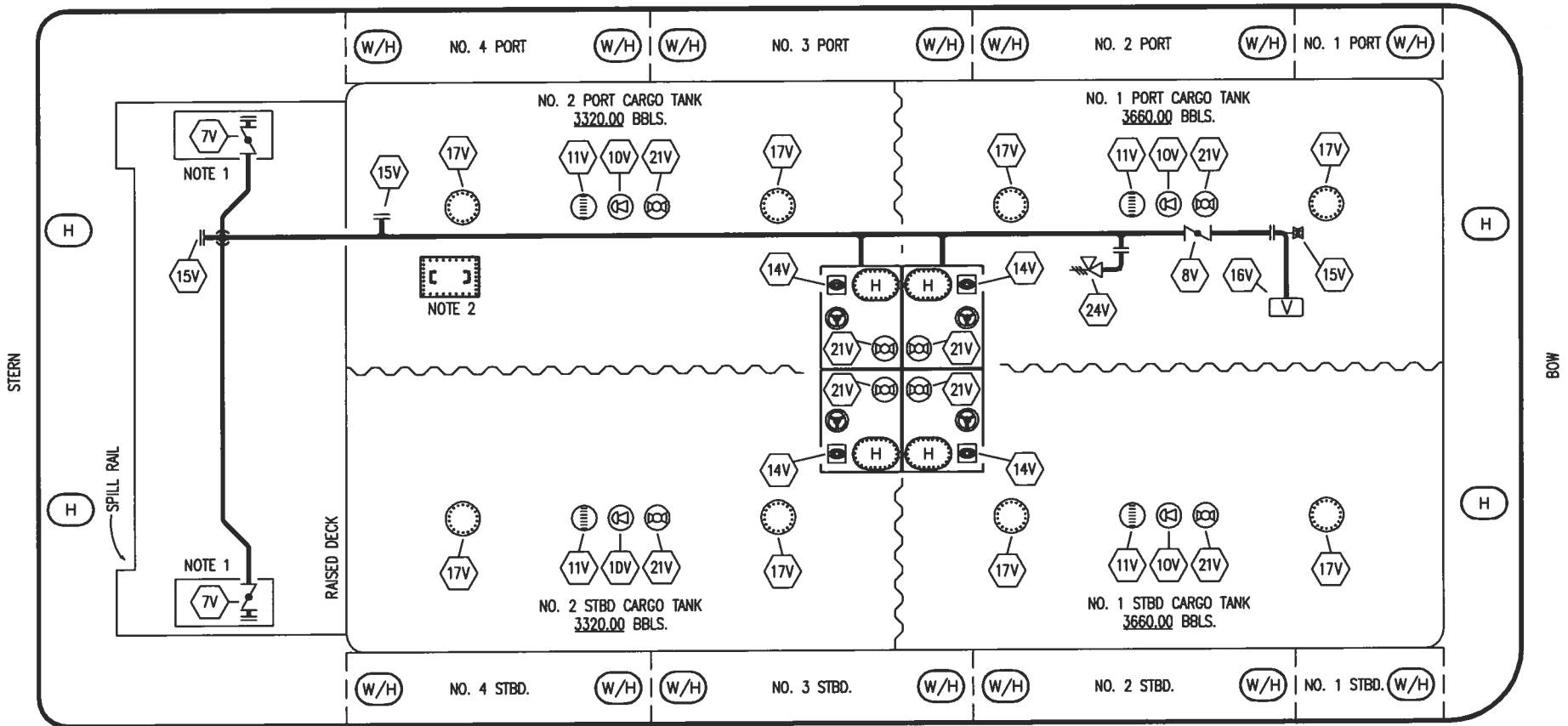
- |     |                                 |     |                           |
|-----|---------------------------------|-----|---------------------------|
| NO  | DESCRIPTION                     | NO  | DESCRIPTION               |
| 1C  | CARGO TANK VALVE                | 13C | CARGO PIPING BLOCK VALVE  |
| 2C  | LOAD VALVE                      | 19C | CARGO HEADER              |
| 3C  | MASTER SUCTION VALVE            | 24C | FLOW INDICATOR            |
| 4C  | DISCHARGE VALVE                 | 30C | CARGO PIPELINE            |
| 5C  | HEADER VALVE                    | 36C | PRESSURE GAUGE            |
| 6C  | SALVAGE VALVE                   | 37C | CARGO DROP Ⓢ              |
| 8C  | RELIEF VALVE                    | 10V | HIGH LEVEL/OVERFILL ALARM |
| 10C | BURP VALVE                      | 11V | GAUGE STICK               |
| 11C | BLEED OFF VALVE                 | 17V | BUTTERWORTH               |
| 12C | BURP VALVE RETURN TO CARGO TANK | 21V | HERMETIC GAUGE            |

- NOTE 1: CONTAINMENT AREA  
 NOTE 2: HATCH HANDLES REQUIRED
- ABOVE DECK PIPING  
 - - - BELOW DECK PIPING

TRINITY MARINE

						<b>KIRBY INLAND MARINE</b>	
0	04/01/09	WK	RB	OF	APPROVED	SCALE: NONE	<b>KIRBY 13020B</b>
REV.	DATE	BY	CHK	APP	REVISION DESCRIPTION	PAGE: 1 OF 3	

REV. 0

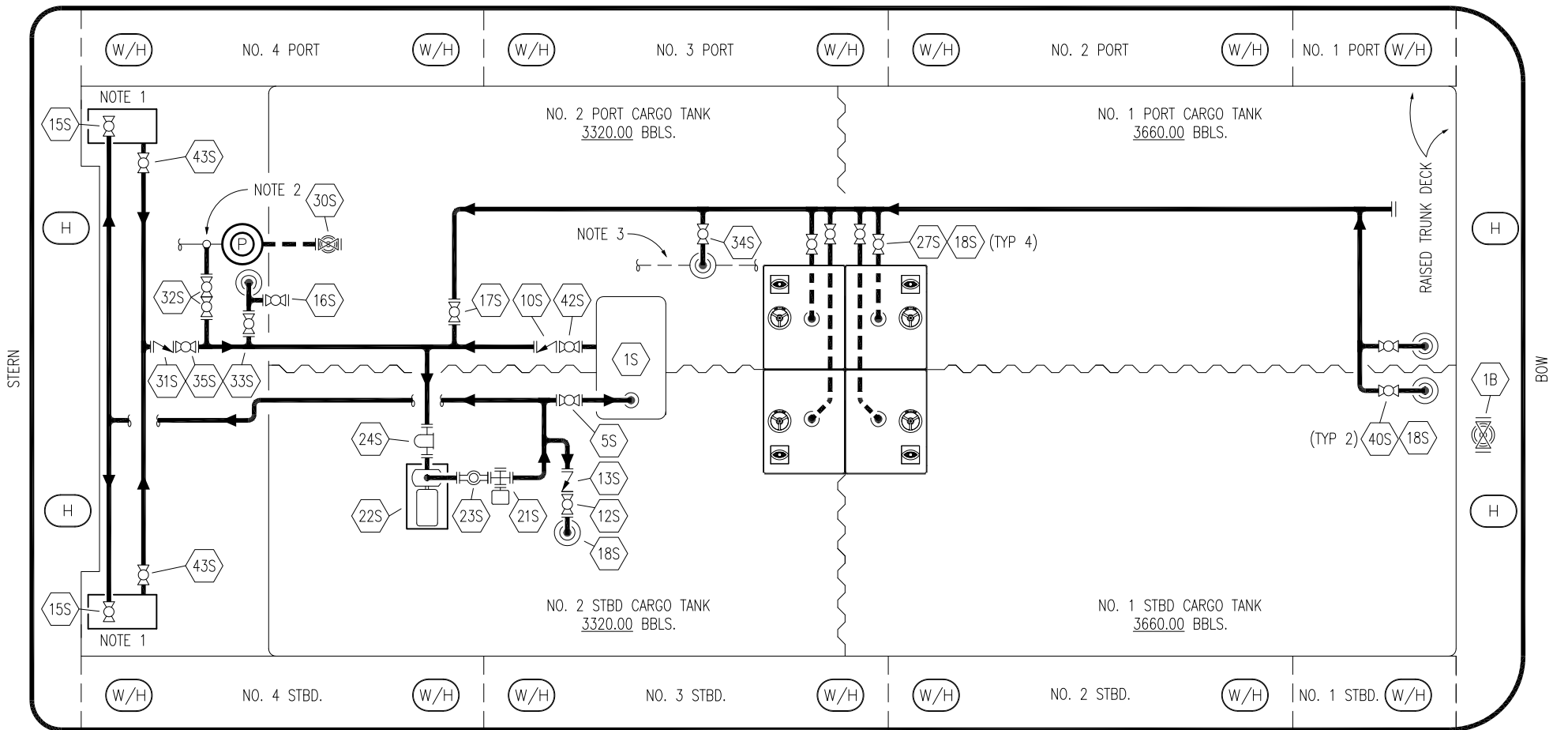


- |           |                           |           |                    |
|-----------|---------------------------|-----------|--------------------|
| <b>NO</b> | <b>DESCRIPTION</b>        | <b>NO</b> | <b>DESCRIPTION</b> |
| 7V        | HEADER VALVE              | 50V       | VAPOR HEADER       |
| 8V        | VENT STACK VALVE          | 51V       | VAPOR PIPELINE     |
| 10V       | HIGH LEVEL/DVERFILL ALARM | —         | ABOVE DECK PIPING  |
| 11V       | GAUGE STICK               |           |                    |
| 14V       | SIGHT GLASS               |           |                    |
| 15V       | INSPECTION PORT           |           |                    |
| 16V       | VAPOR VENT STACK          |           |                    |
| 17V       | BUTTERWORTH               |           |                    |
| 21V       | HERMETIC GAUGE            |           |                    |
| 24V       | PRESSURE RELIEF VALVE     |           |                    |

NOTE 1: CONTAINMENT AREA  
 NOTE 2: HATCH HANDLES REQUIRED

TRINITY MARINE

<div style="display: flex; justify-content: space-between; align-items: center;"> <span style="font-size: 24pt; font-weight: bold;">KIRBY INLAND MARINE</span> </div>						
VAPOR PIPING FLOW DIAGRAM						
0	04/01/09	WK	RB	OF	APPROVED	SCALE: NONE
REV.	DATE	BY	CHK	APP	REVISION DESCRIPTION	PAGE: 2 OF 3
KIRBY 13020B						0



NO	DESCRIPTION	NO	DESCRIPTION	NO	DESCRIPTION
1B	BALLAST TANK VALVE	21S	PRIMING POT	36S	STRIPPING PUMP DISCHARGE
1S	SLOP TANK	22S	STRIPPING PUMP	40S	CARGO TANK SUCTION
5S	SLOP TANK SUCTION VALVE	23S	FLOW INDICATOR	42S	SLOP TANK DISCHARGE VALVE
7S	SLOP TANK VALVE	24S	BASKET STRAINER	43S	DRIP PAN SUCTION VALVE
10S	SLOP TANK CHECK VALVE	27S	SUMP SUCTION		
12S	RETURN TO CARGO TANK VALVE	30S	PUMP CAN DRAIN VALVE		
13S	RETURN TO CARGO CHECK VALVE	31S	CHECK VALVE		
15S	DISCHARGE CARGO VALVE	32S	PUMP WELL PRIMER VALVE		
16S	REMOTE SUCTION CONNECTION	33S	PUMP WELL SUCTION		
17S	FORWARD CARGO TANK ISOLATION	34S	PIPELINE LOWER POINT SUCTION		
18S	TYP. STRIPPING PENETRATION	35S	STRIPPING VALVE		

NOTE 1: CONTAINMENT P/S  
 NOTE 2: CONNECT TO CARGO RELIEF DISCHARGE LINE  
 NOTE 3: CONNECT TO CARGO PIPELINE

— ABOVE DECK PIPING  
 - - - BELOW DECK PIPING

TRINITY MARINE

REV.	DATE	BY	CHK	APP	REVISION DESCRIPTION
2	05/03/21	MRV	DDA		REVISED PER CLIENT COMMENTS
1	05/12/16	WFB	DDA		REVISED PER CLIENT COMMENTS
0	04/01/09	WK	RB	AB	APPROVED

KIRBY INLAND MARINE

STRIPPING  
PIPING FLOW DIAGRAMS

KIRBY 13020B

REV. 2

SCALE: NONE  
PAGE: 3 OF 3