

TRES PALACIOS - EX: N/A



KIRBY INLAND MARINE

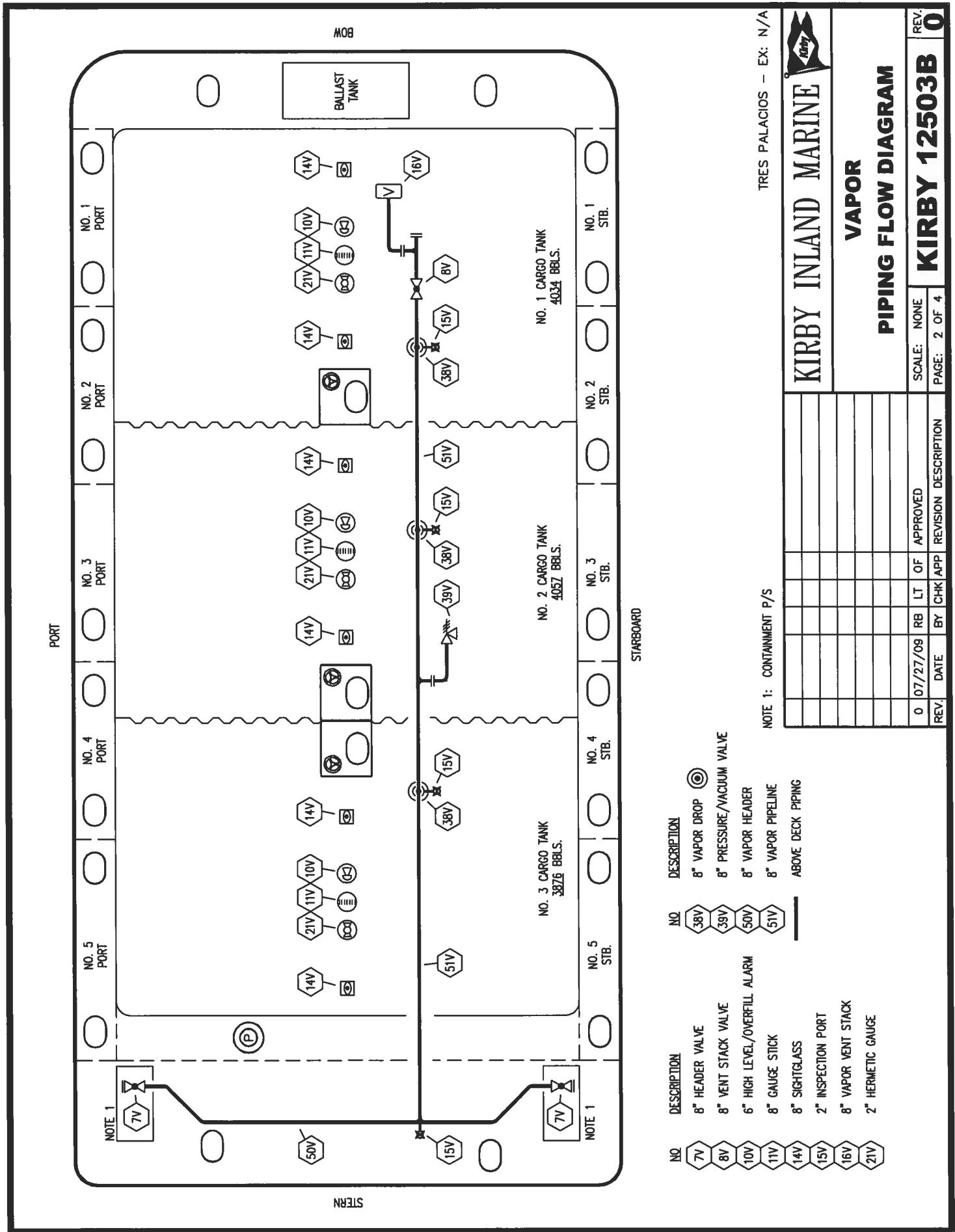
CARGO

PIPING FLOW DIAGRAM

REV.	DATE	BY	CHK/APP	REVISION	DESCRIPTION	SCALE:	NONE	PAGE:	1 OF 4	REV.
0	07/27/09	RB	LT	OF	APPROVED					KIRBY 12503B

- | | | | |
|-----|-----------------------------|-----|-------------------|
| NO | DESCRIPTION | NO | DESCRIPTION |
| 1C | CARGO TANK VALVE | 19C | CARGO HEADER |
| 2C | LOAD VALVE | 30C | CARGO PIPELINE |
| 3C | MASTER SUCTION VALVE | 37C | CARGO DROP |
| 4C | DISCHARGE VALVE | SC | SEA CHEST |
| 5C | HEADER VALVE | 9B | SEA CHEST VALVE |
| 6C | SALVAGE VALVE | --- | ABOVE DECK PIPING |
| 8C | RELIEF VALVE | --- | BELOW DECK PIPING |
| 9C | CHECK VALVE | | |
| 15C | BYPASS VALVE (AROUND CHECK) | | |

NOTE 1: CONTAINMENT P/S



TRES PALACIOS - EX: N/A



KIRBY INLAND MARINE

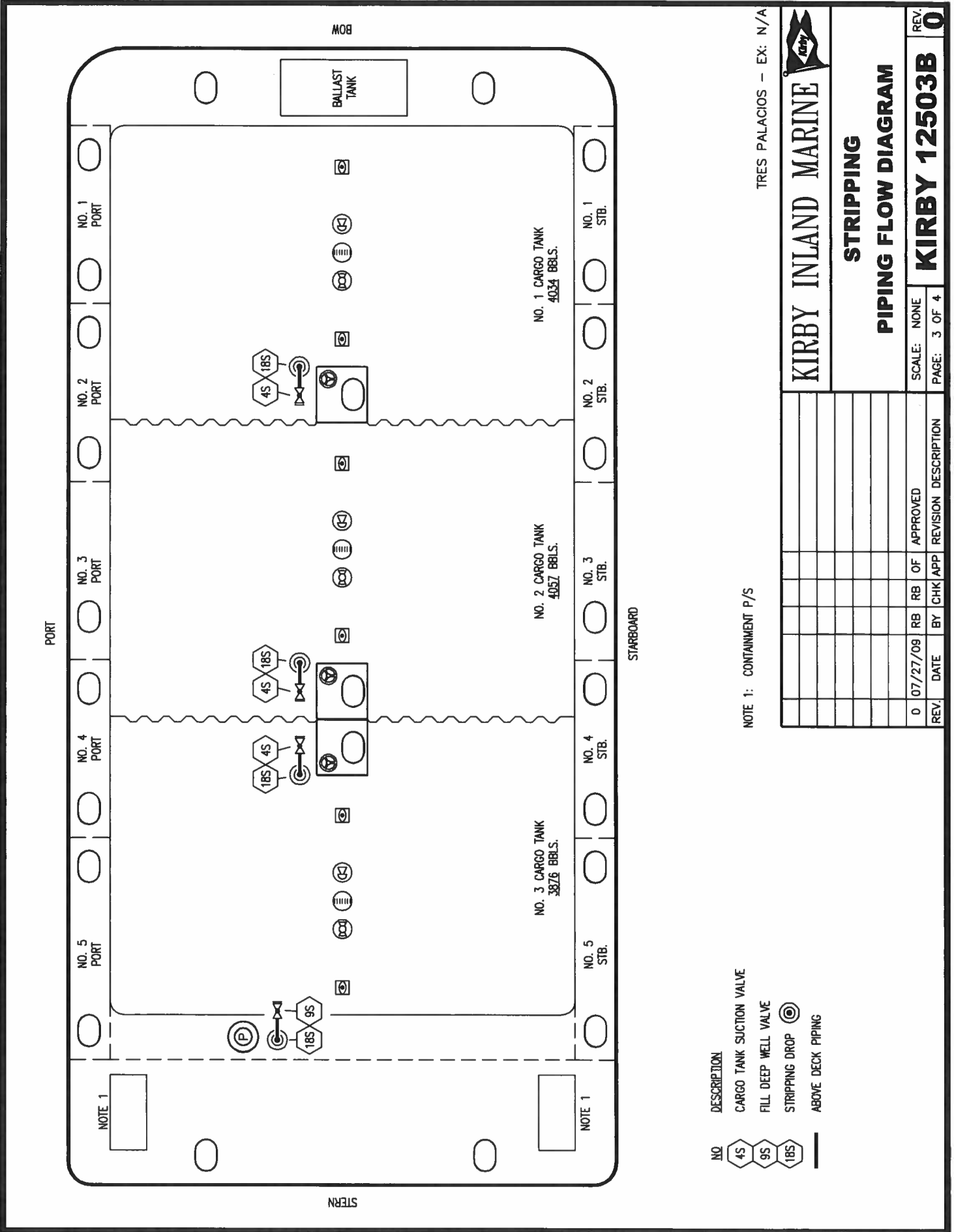
**VAPOR
PIPING FLOW DIAGRAM**

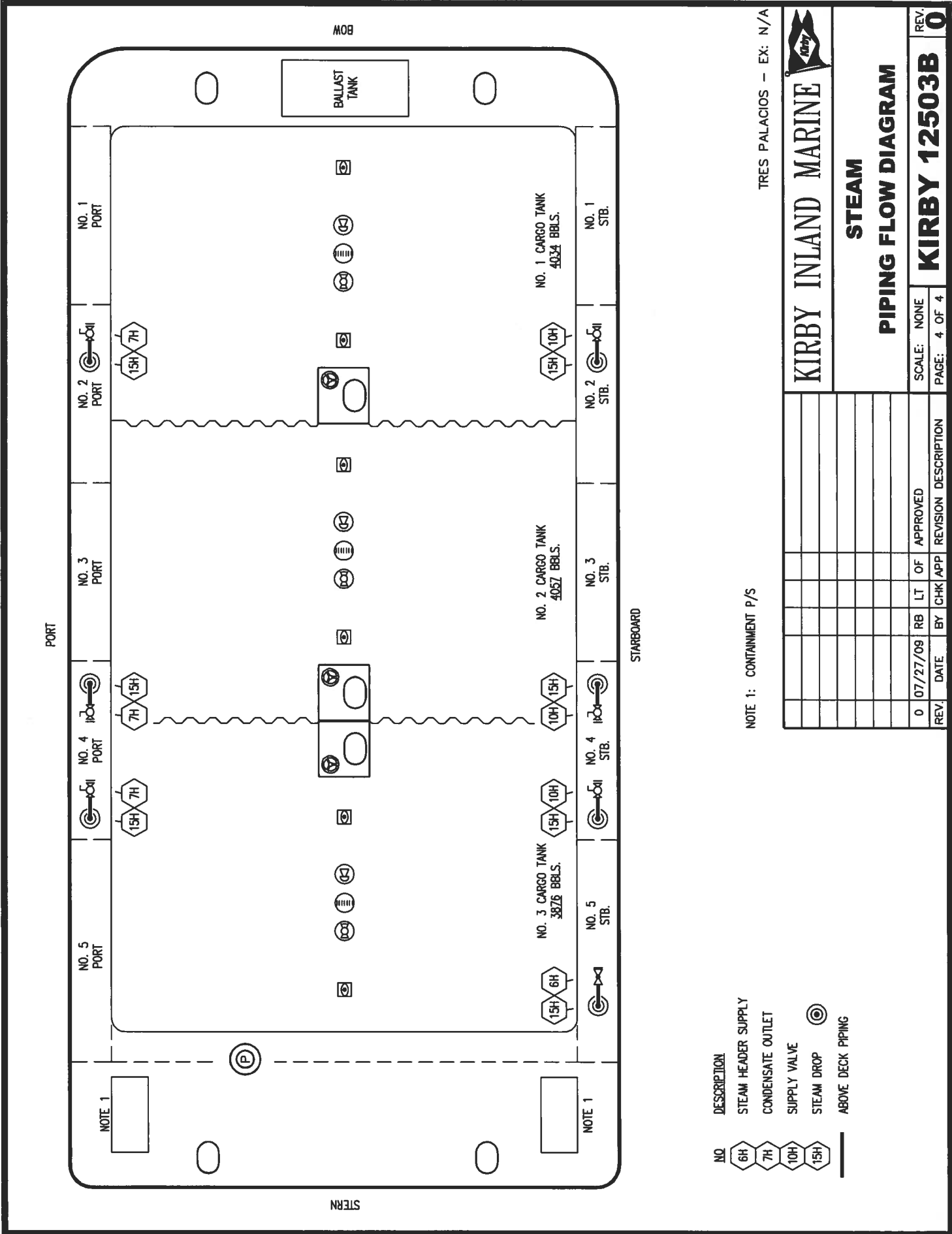
REV.	DATE	BY	CHK/APP	REVISION	DESCRIPTION
0	07/27/09	RB	LT	OF	APPROVED

SCALE:	NONE
PAGE:	2 OF 4
REV. 0	
KIRBY 12503B	

NOTE 1: CONTAMINANT P/S

- | | |
|---------------------|------------------------------|
| NO | DESCRIPTION |
| 7V | 8" HEADER VALVE |
| 8V | 8" VENT STACK VALVE |
| 10V | 6" HIGH LEVEL/OVERFILL ALARM |
| 11V | 8" GAUGE STICK |
| 14V | 8" SIGHTGLASS |
| 15V | 2" INSPECTION PORT |
| 16V | 8" VAPOR VENT STACK |
| 21V | 2" HERMETIC GAUGE |
| 38V | 8" VAPOR DROP |
| 39V | 8" PRESSURE/VACUUM VALVE |
| 50V | 8" VAPOR HEADER |
| 51V | 8" VAPOR PIPELINE |
| — ABOVE DECK PIPING | |





TRES PALACIOS - EX: N/A



KIRBY INLAND MARINE

STEAM PIPING FLOW DIAGRAM

REV.	DATE	BY	CHK	APP	REVISION	DESCRIPTION
0	07/27/09	RB	LT	OF	APPROVED	

SCALE: NONE	PAGE: 4 OF 4
KIRBY 12503B	REV. 0

- DESCRIPTION**
- 6H STEAM HEADER SUPPLY
 - 7H CONDENSATE OUTLET
 - 10H SUPPLY VALVE
 - 15H STEAM DROP
 - ABOVE DECK PIPING

NOTE 1: CONTAINMENT P/S