

STARBOARD

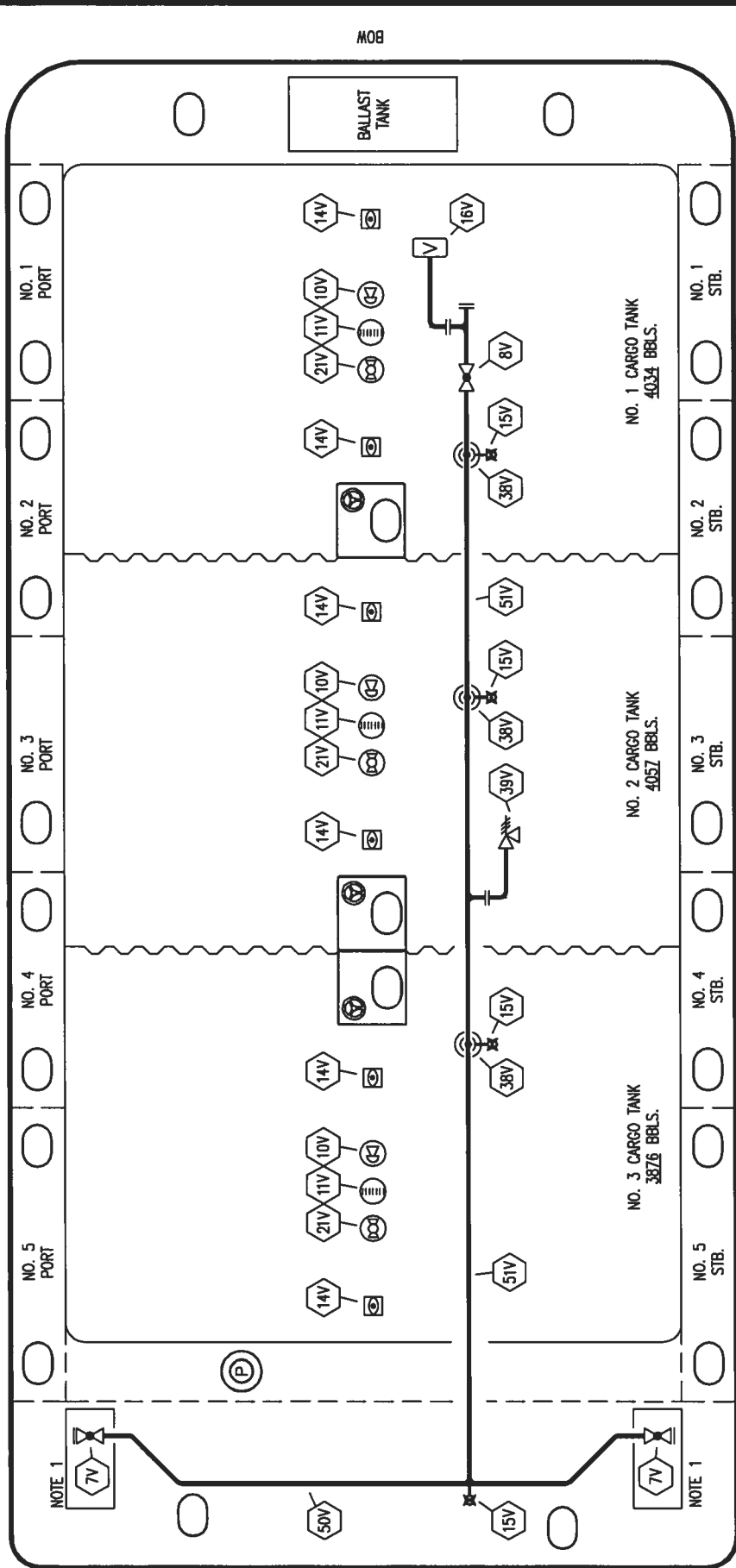
- | | | | |
|--------|-----------------------------|-----|-------------------|
| NO. 1C | DESCRIPTION | NO. | DESCRIPTION |
| 1C | CARGO TANK VALVE | 19C | CARGO HEADER |
| 2C | LOAD VALVE | 30C | CARGO PIPELINE |
| 3C | MASTER SUCTION VALVE | 37C | CARGO DROP |
| 4C | DISCHARGE VALVE | SC | SEA CHEST |
| 5C | HEADER VALVE | 9B | SEA CHEST VALVE |
| 6C | SALVAGE VALVE | --- | ABOVE DECK PIPING |
| 8C | RELIEF VALVE | --- | BELOW DECK PIPING |
| 9C | CHECK VALVE | | |
| 15C | BYPASS VALVE (AROUND CHECK) | | |

NOTE 1: CONTAINMENT P/S

TRES PALACIOS - EX: N/A

KIRBY INLAND MARINE			
CARGO			
PIPING FLOW DIAGRAM			
REV.	DATE	BY	CHK APP
0	07/20/09	RB	LT OF APPROVED
SCALE:	NONE		
PAGE:	1 OF 4		
REV.	REV.		
0	KIRBY 12502B		

PORT



STERN

BOW

STARBOARD

- NO. 7V 8" HEADER VALVE
- NO. 8V 8" VENT STACK VALVE
- NO. 10V 6" HIGH LEVEL/OVERFILL ALARM
- NO. 11V 8" GAUGE STICK
- NO. 14V 8" SIGHTGLASS
- NO. 15V 2" INSPECTION PORT
- NO. 16V 8" VAPOR VENT STACK
- NO. 21V 2" HERMETIC GAUGE

- NO. 38V 8" VAPOR DROP
- NO. 39V 8" PRESSURE/VACUUM VALVE
- NO. 50V 8" VAPOR HEADER
- NO. 51V 8" VAPOR PIPELINE
- ABOVE DECK PIPING

NOTE 1: CONTAINMENT P/S

TRES PALACIOS - EX: N/A



KIRBY INLAND MARINE

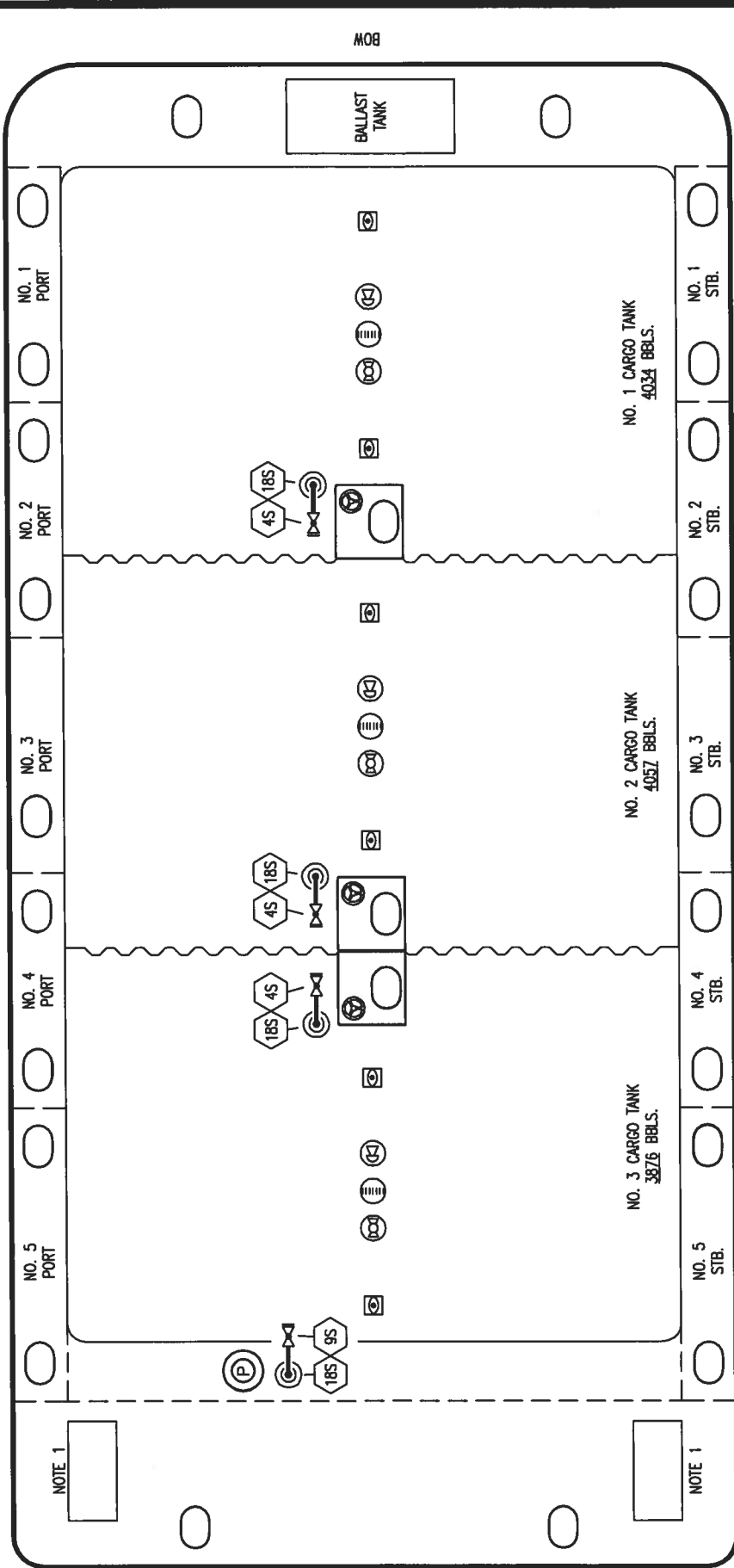
VAPOR
PIPING FLOW DIAGRAM

REV.	DATE	BY	CHK APP	REVISION DESCRIPTION	SCALE:	PAGE:
0	07/20/09	RB	LT	OF APPROVED	NONE	2 OF 4

KIRBY 12502B

REV. **0**

PORT



STERN

BOW

NO. 1 PORT

NO. 2 PORT

NO. 3 PORT

NO. 4 PORT

NO. 5 PORT

NOTE 1

NOTE 1

NO. 1 CARGO TANK
4034 BBLs.

NO. 2 CARGO TANK
4057 BBLs.

NO. 3 CARGO TANK
3876 BBLs.

BALLAST TANK

NO. 1 STB.

NO. 2 STB.

NO. 3 STB.

NO. 4 STB.

NO. 5 STB.

STARBOARD

- NO DESCRIPTION
- 4S CARGO TANK SUCTION VALVE
 - 9S FILL DEEP WELL VALVE
 - 18S STRIPPING DROP
 - ABOVE DECK PIPING

NOTE 1: CONTAMNENT P/S

TRES PALACIOS - EX: N/A



KIRBY INLAND MARINE

STRIPPING

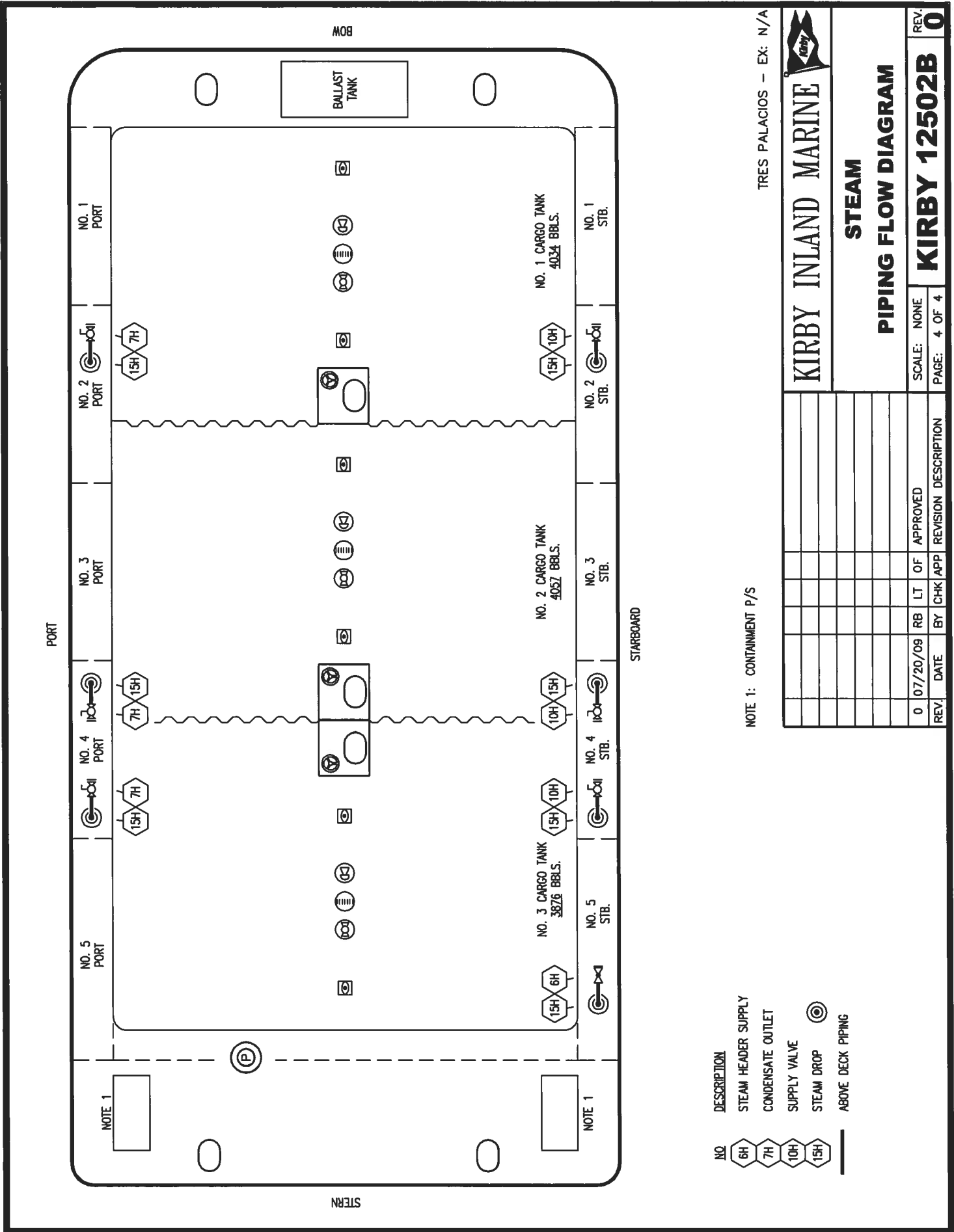
PIPING FLOW DIAGRAM

REV.	DATE	BY	CHK APP	RB	OF	APPROVED	REVISION DESCRIPTION
0	07/20/09						

SCALE: NONE
PAGE: 3 OF 4

REV. 0

KIRBY 12502B



TRES PALACIOS - EX: N/A



KIRBY INLAND MARINE

STEAM

PIPING FLOW DIAGRAM

REV.	DATE	BY	CHK	APP	REVISION DESCRIPTION	SCALE	NONE	PAGE	4 OF 4	REV.
0	07/20/09	RB	LT	OF	APPROVED					KIRBY 12502B

NOTE 1: CONTAINMENT P/S

- NO. 6H
 - NO. 7H
 - NO. 10H
 - NO. 15H
- DESCRIPTION
- STEAM HEADER SUPPLY
 - CONDENSATE OUTLET
 - SUPPLY VALVE
 - STEAM DROP
 - ABOVE DECK PIPING