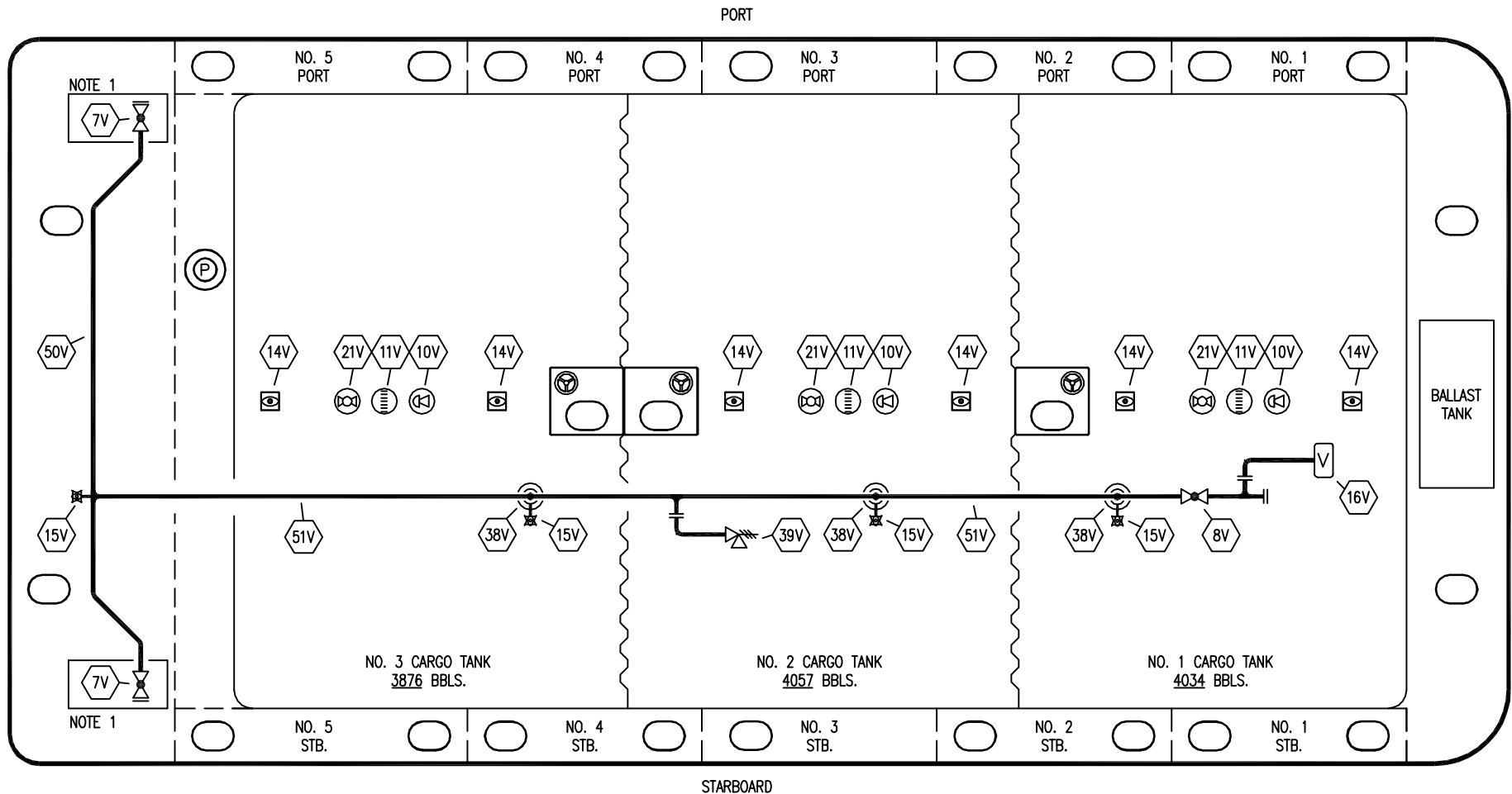


- |     |                             |       |                         |
|-----|-----------------------------|-------|-------------------------|
| NO  | DESCRIPTION                 | NO    | DESCRIPTION             |
| 1C  | CARGO TANK VALVE            | 19C   | CARGO HEADER            |
| 2C  | LOAD VALVE                  | 30C   | CARGO PIPELINE          |
| 3C  | MASTER SUCTION VALVE        | 37C   | CARGO DROP              |
| 4C  | DISCHARGE VALVE             | SC    | SEA CHEST               |
| 5C  | HEADER VALVE                | 9B    | SEA CHEST VALVE         |
| 6C  | SALVAGE VALVE               | —     | — ABOVE DECK PIPING     |
| 8C  | RELIEF VALVE                | - - - | - - - BELOW DECK PIPING |
| 9C  | CHECK VALVE                 |       |                         |
| 15C | BYPASS VALVE (AROUND CHECK) |       |                         |

NOTE 1: CONTAINMENT P/S

TRES PALACIOS - EX: N/A

<b>KIRBY INLAND MARINE</b>							
<b>CARGO</b> <b>PIPING FLOW DIAGRAM</b>							
0	07/20/09	RB	LT	OF	APPROVED		
REV.	DATE	BY	CHK	APP	REVISION DESCRIPTION		
<table border="1" style="float: right; border-collapse: collapse;"> <tr> <td style="width: 50px;">SCALE: NONE</td> </tr> <tr> <td>PAGE: 1 OF 4</td> </tr> </table>						SCALE: NONE	PAGE: 1 OF 4
SCALE: NONE							
PAGE: 1 OF 4							
<b>KIRBY 12500B</b>					<b>REV. 0</b>		



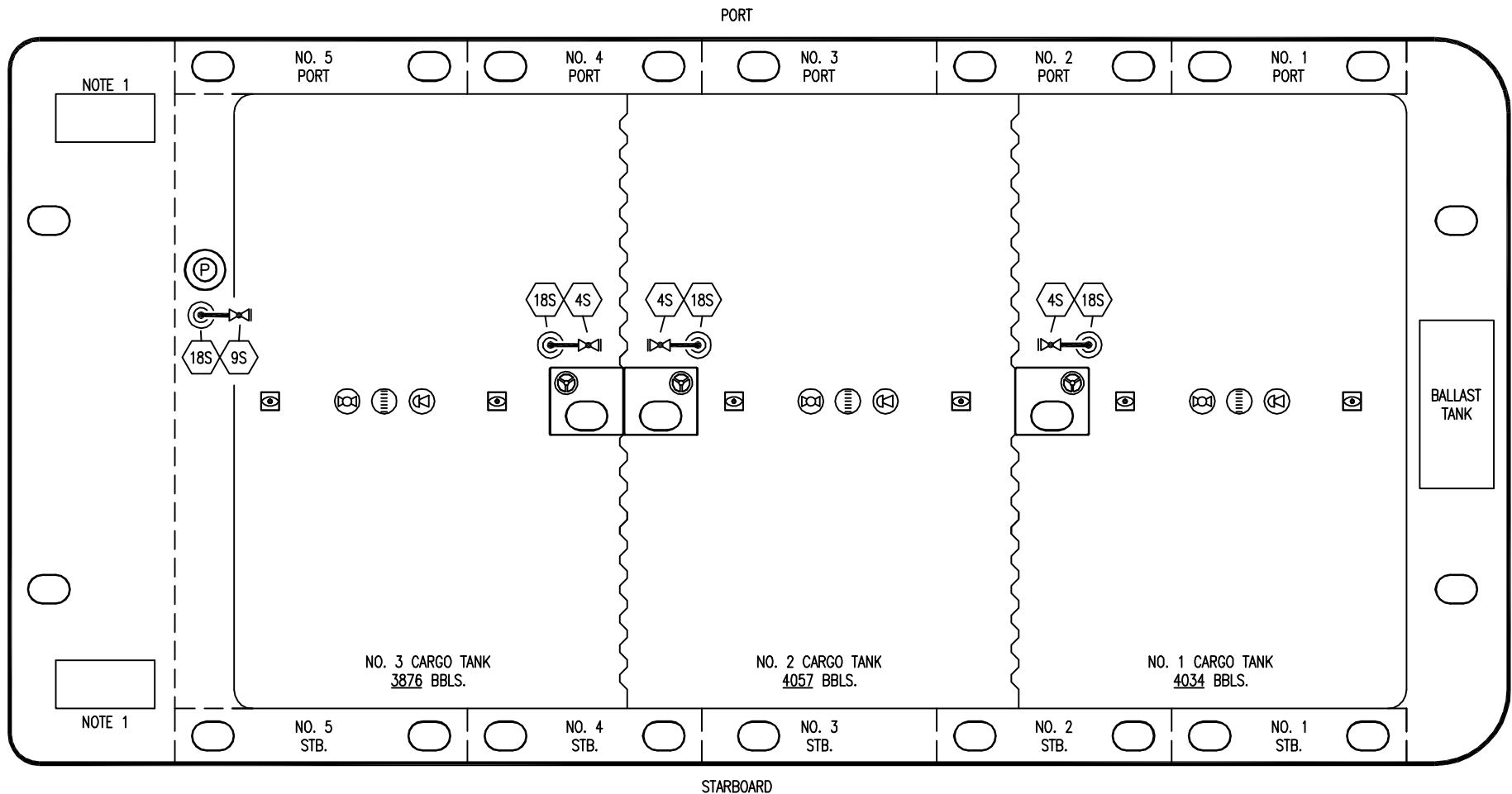
- |           |                              |           |                          |
|-----------|------------------------------|-----------|--------------------------|
| <b>NO</b> | <b>DESCRIPTION</b>           | <b>NO</b> | <b>DESCRIPTION</b>       |
| 7V        | 8" HEADER VALVE              | 38V       | 8" VAPOR DROP (⊙)        |
| 8V        | 8" VENT STACK VALVE          | 39V       | 8" PRESSURE/VACUUM VALVE |
| 10V       | 6" HIGH LEVEL/OVERFILL ALARM | 50V       | 8" VAPOR HEADER          |
| 11V       | 8" GAUGE STICK               | 51V       | 8" VAPOR PIPELINE        |
| 14V       | 8" SIGHTGLASS                | —         | ABOVE DECK PIPING        |
| 15V       | 2" INSPECTION PORT           |           |                          |
| 16V       | 8" VAPOR VENT STACK          |           |                          |
| 21V       | 2" HERMETIC GAUGE            |           |                          |

NOTE 1: CONTAINMENT P/S

TRES PALACIOS - EX: N/A

0	07/20/09	RB	LT	OF	APPROVED	
REV.	DATE	BY	CHK	APP	REVISION DESCRIPTION	


<b>KIRBY INLAND MARINE</b>	
<b>VAPOR PIPING FLOW DIAGRAM</b>	
SCALE: NONE	<b>KIRBY 12500B</b>
PAGE: 2 OF 4	
REV. 0	



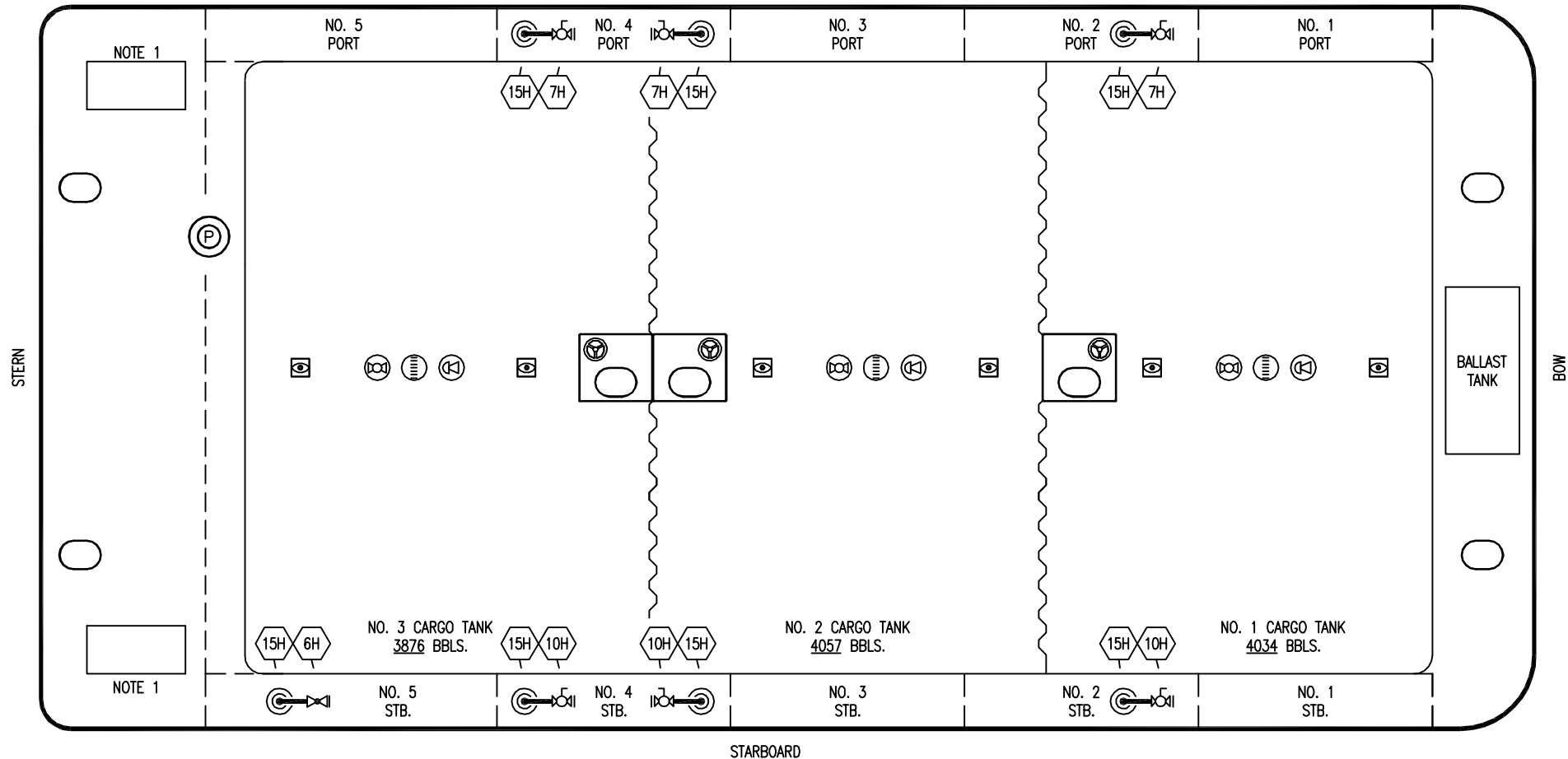
- | NO  | DESCRIPTION              |
|-----|--------------------------|
| 4S  | CARGO TANK SUCTION VALVE |
| 9S  | FILL DEEP WELL VALVE     |
| 18S | STRIPPING DROP           |
| —   | ABOVE DECK PIPING        |

NOTE 1: CONTAINMENT P/S

TRES PALACIOS - EX: N/A

						KIRBY INLAND MARINE 	
						<b>KIRBY 12500B</b>	
0	07/20/09	RB	RB	OF	APPROVED		
REV.	DATE	BY	CHK	APP	REVISION DESCRIPTION	PAGE: 3 OF 4	

PORT



NOTE 1

NOTE 1

- NO DESCRIPTION
- 6H STEAM HEADER SUPPLY
- 7H CONDENSATE OUTLET
- 10H SUPPLY VALVE
- 15H STEAM DROP
- ABOVE DECK PIPING

NOTE 1: CONTAINMENT P/S

TRES PALACIOS - EX: N/A

0	07/20/09	RB	LT	OF	APPROVED				
REV.	DATE	BY	CHK	APP	REVISION DESCRIPTION				

KIRBY INLAND MARINE



### STEAM PIPING FLOW DIAGRAM

SCALE: NONE  
PAGE: 4 OF 4

**KIRBY 12500B** REV. **0**