

KIRBY INLAND MARINE

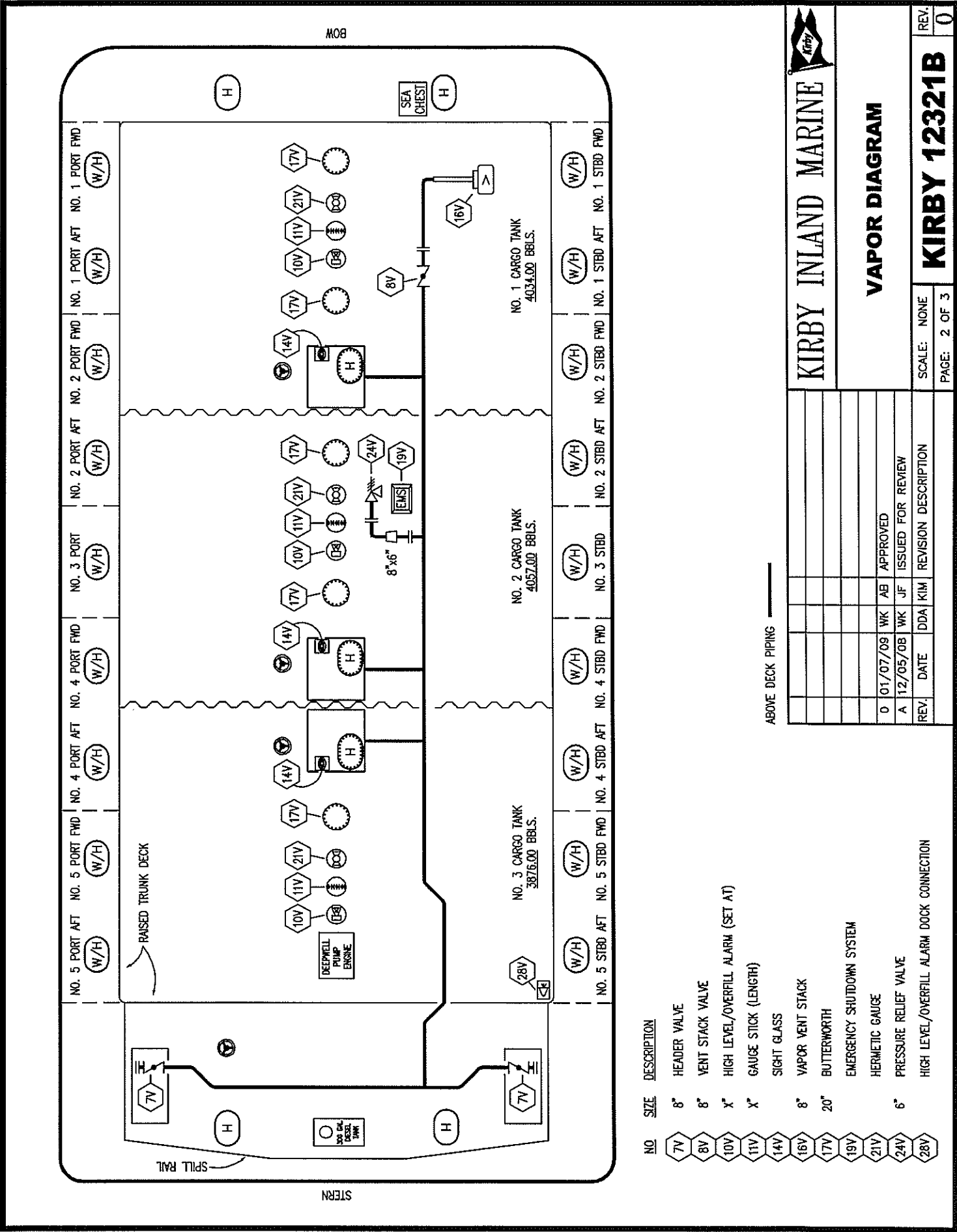
CARGO DIAGRAM

REV.	DATE	DDA	KIM	REVISION DESCRIPTION
1	01/07/09	WK	AB	CHANGE 19C TO 30C
0	12/05/08	WK	JF	APPROVED
A	12/05/08	WK	JF	ISSUED FOR REVIEW

SCALE: NONE PAGE: 1 OF 3

KIRBY 12321B

REV. 1



KIRBY INLAND MARINE

VAPOR DIAGRAM

SCALE: NONE
PAGE: 2 OF 3

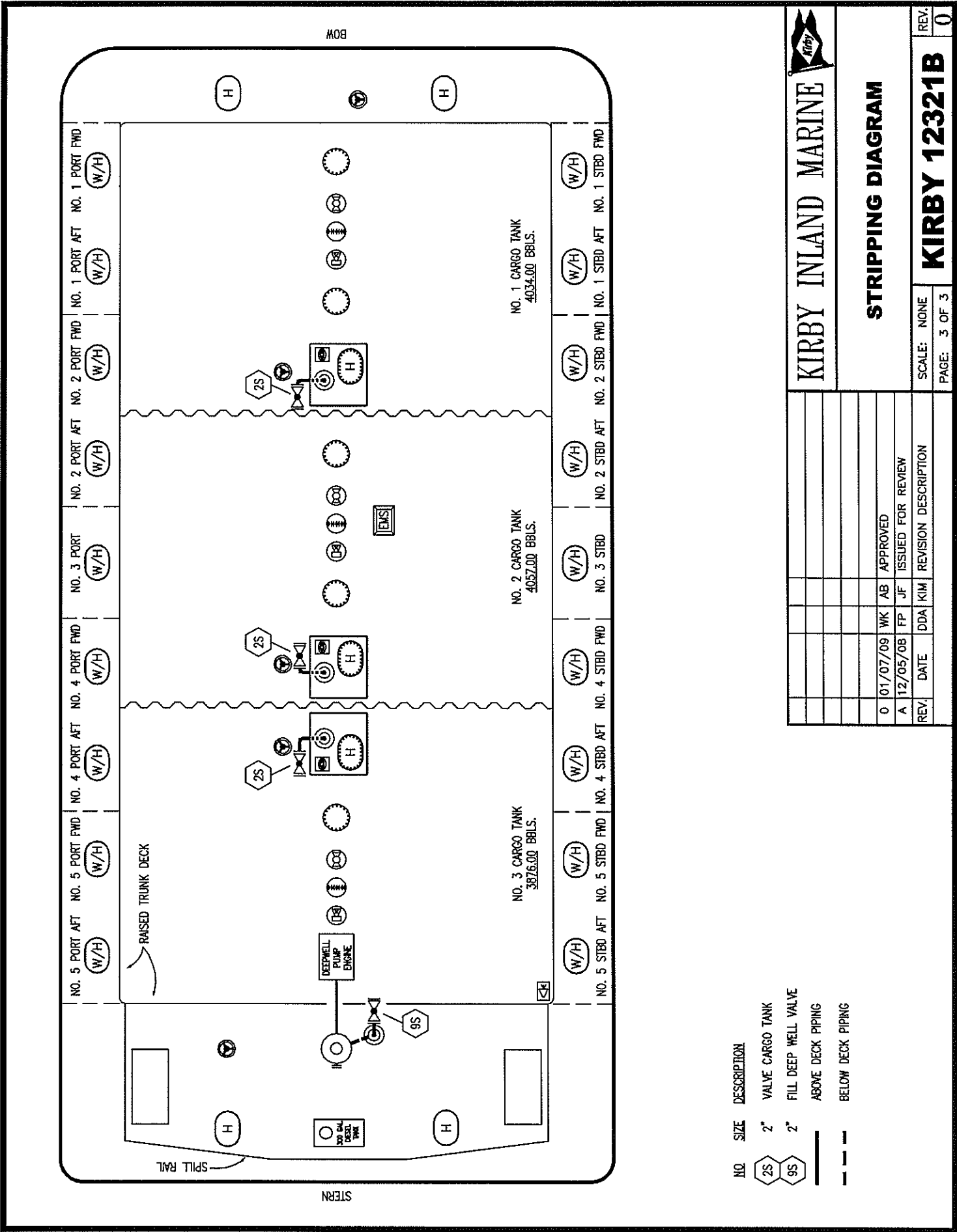
KIRBY 12321B

REV. 0

REV.	DATE	DDA	KIM	REVISION DESCRIPTION
0	01/07/09	WK	AB	APPROVED
A	12/05/08	WK	JF	ISSUED FOR REVIEW

NO	SIZE	DESCRIPTION
7V	8"	HEADER VALVE
8V	8"	VENT STACK VALVE
10V	X"	HIGH LEVEL/OVERFILL ALARM (SET AT)
11V	X"	GAUGE STICK (LENGTH)
14V		SIGHT GLASS
16V	8"	VAPOR VENT STACK
17V	20"	BUTTERWORTH
19V		EMERGENCY SHUTDOWN SYSTEM
21V		HERMETIC GAUGE
24V	6"	PRESSURE RELIEF VALVE
28V		HIGH LEVEL/OVERFILL ALARM DOCK CONNECTION

ABOVE DECK PIPING



- NO. SIZE DESCRIPTION
- 2" VALVE CARGO TANK
 - 2" FILL DEEP WELL VALVE
 - ABOVE DECK PIPING
 - - - BELOW DECK PIPING

KIRBY INLAND MARINE			
STRIPPING DIAGRAM			
REV.	DATE	DDA KIM	REVISION DESCRIPTION
0	01/07/09	WK AB	APPROVED
A	12/05/08	FP JF	ISSUED FOR REVIEW
SCALE:	NONE		
PAGE:	3 OF 3		
REV.	0		
KIRBY 12321B			