

POTT INDUSTRIES - EX: KEX 1201



KIRBY INLAND MARINE

CARGO

PIPING FLOW DIAGRAM

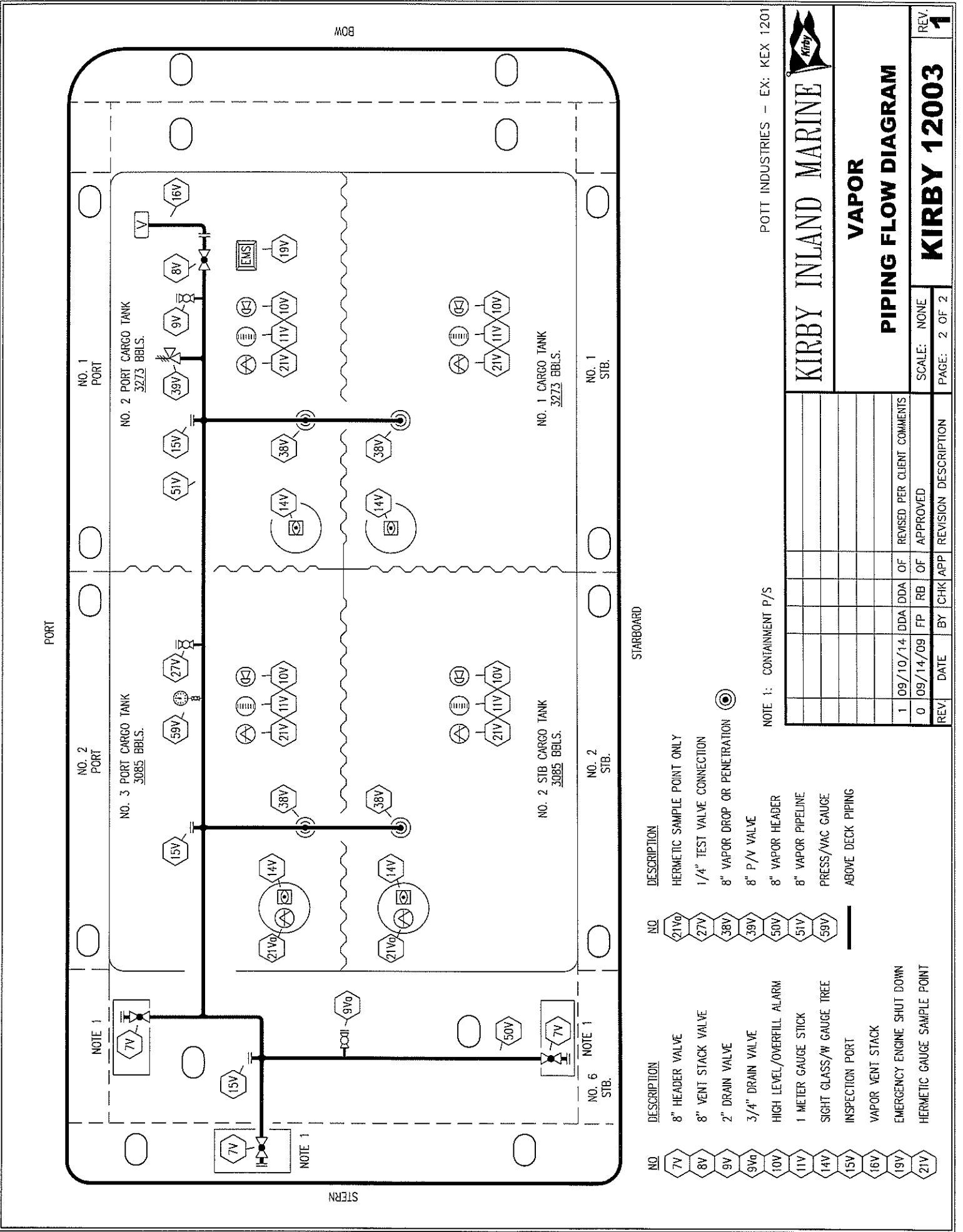
SCALE: NONE  
PAGE: 1 OF 2  
REV. 1

STARBOARD

NO	DESCRIPTION	NO	DESCRIPTION
1C	CARGO TANK VALVE	15C	BYPASS VALVE AROUND CHECK
2C	LOAD VALVE	16C	DISCHARGE PRESSURE GAUGE
3C	MASTER SUCTION VALVE	19C	CARGO HEADER
4C	DISCHARGE VALVE	23C	SEA CHEST BLOCK VALVE
5C	HEADER VALVE	26C	PUMP WELL DRAIN VALVE
6C	SALVAGE VALVE	30C	CARGO PIPELINE
7C	STRIPPING BLOCK VALVE	37C	CARGO DROP
8C	RELIEF VALVE		ABOVE DECK PIPING
9C	CHECK VALVE		BELOW DECK PIPING
11C	BLEED OFF VALVE		

NOTE 1: CONTAINMENT P/S  
NOTE 2: TYPICAL VALVE ARRANGEMENT FOR FOR ALL TANKS.

REV	DATE	BY	CHK	APP	REVISION DESCRIPTION
1	09/11/14	DDA	DDA	OF	REVISED PER CLIENT COMMENTS
0	09/14/09	FP	RB	OF	APPROVED



PORT

BOW

STERN

NO. 1 PORT

NO. 2 PORT

NOTE 1

NO. 2 PORT CARGO TANK  
3273 BBLs.

NO. 3 PORT CARGO TANK  
3085 BBLs.

NO. 1 CARGO TANK  
3273 BBLs.

NO. 2 STB CARGO TANK  
3085 BBLs.

NO. 1 STB.

NO. 2 STB.

NOTE 1

STARBOARD

NO	DESCRIPTION	NO	DESCRIPTION
7V	8" HEADER VALVE	21V	HERMETIC SAMPLE POINT ONLY
8V	8" VENT STACK VALVE	27V	1/4" TEST VALVE CONNECTION
9V	2" DRAIN VALVE	38V	8" VAPOR DROP OR PENETRATION
10V	3/4" DRAIN VALVE	39V	8" P/V VALVE
11V	HIGH LEVEL/OVERFILL ALARM	50V	8" VAPOR HEADER
14V	1 METER GAUGE STICK	51V	8" VAPOR PIPELINE
15V	SIGHT GLASS/W GAUGE TREE	59V	PRESS/VAC GAUGE
16V	INSPECTION PORT		ABOVE DECK PIPING
18V	VAPOR VENT STACK		
19V	EMERGENCY ENGINE SHUT DOWN		
21V	HERMETIC GAUGE SAMPLE POINT		

POTT INDUSTRIES - EX: KEX 1201



KIRBY INLAND MARINE

VAPOR

PIPING FLOW DIAGRAM

REV.	DATE	BY	CHK	APP	REVISION DESCRIPTION
1	09/10/14	DDA	DDA	OF	REVISED PER CLIENT COMMENTS
0	09/14/09	FP	RB	OF	APPROVED

SCALE:	NONE
PAGE:	2 OF 2

NOTE 1: CONTAINMENT P/S