




NO	DESCRIPTION	NO	DESCRIPTION
1C	8" CARGO TANK VALVE	13C	10" CARGO PIPING BLOCK VALVE
2C	8" LOAD VALVE	19C	8" CARGO HEADER
3C	10" MASTER SUCTION VALVE	30C	10" CARGO PIPELINE
4C	6" DISCHARGE VALVE	31C	2" BYPASS VALVE
5C	8" HEADER VALVE	35S	2" STRIPPING VALVE
8C	6" RELIEF VALVE	37C	CARGO DROP 
9C	8" CHECK VALVE		ABOVE DECK PIPING
			BELOW DECK PIPING

NOTE 1: CONTAINMENT P/S

EX. HFL 220 SS

0	06/08/24	AC	DDA	REM	ISSUED FOR APPROVAL
REV.	DATE	BY	CHK	APP	REVISION DESCRIPTION

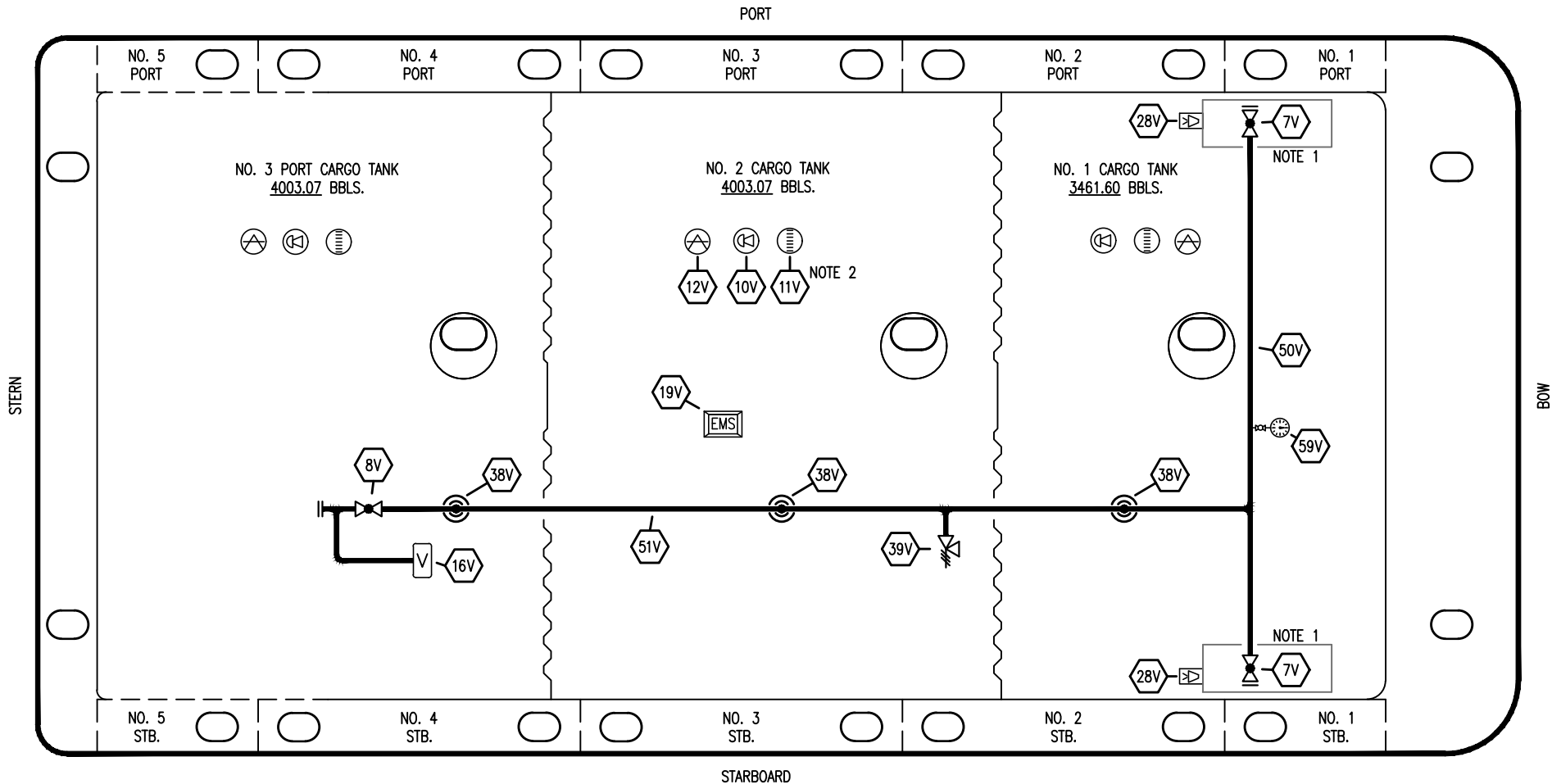
KIRBY INLAND MARINE 

**CARGO
PIPING FLOW DIAGRAM**

SCALE: NONE
PAGE: 1 OF 4

KIRBY 11618

REV. **0**



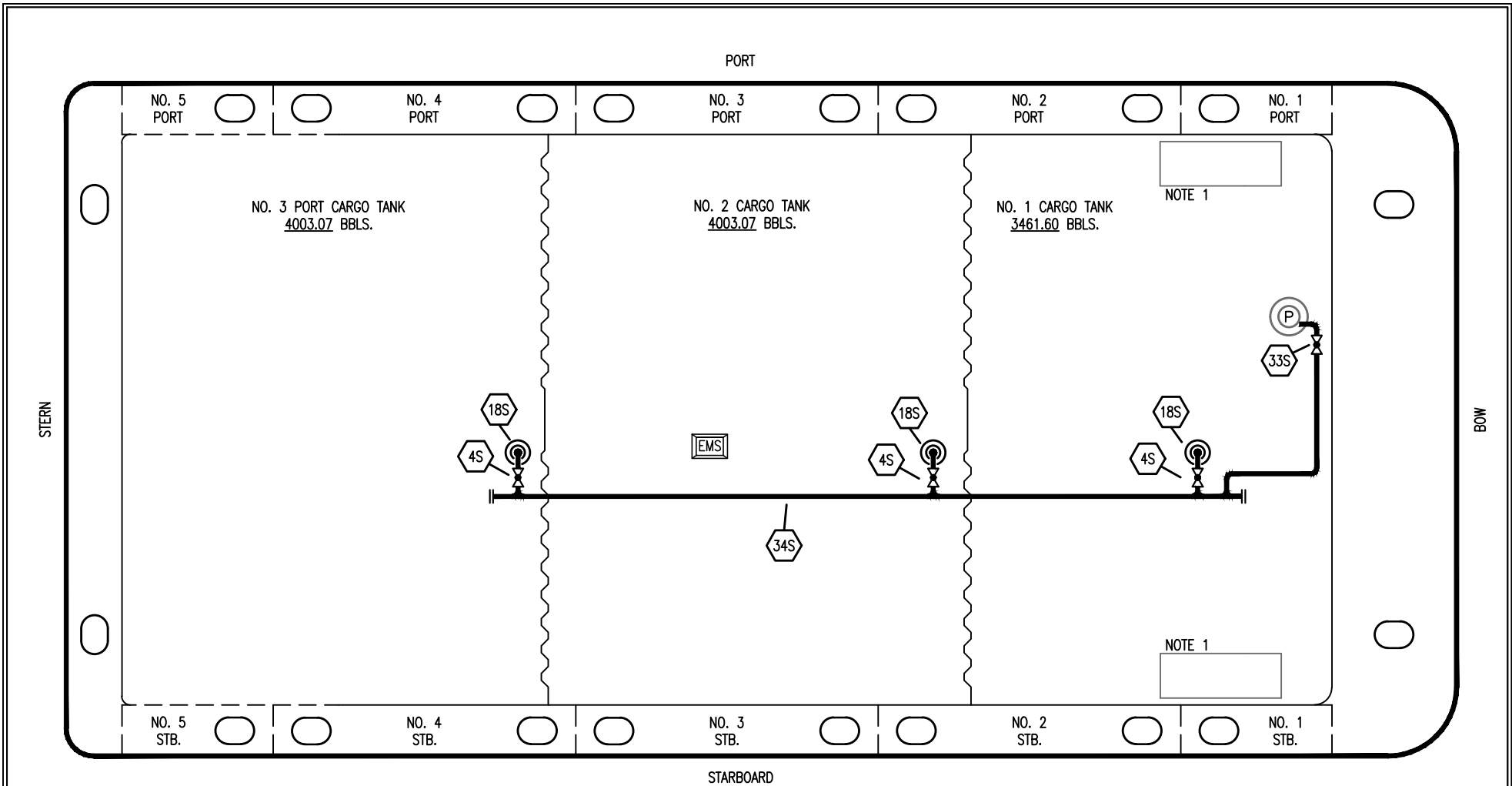
NO	DESCRIPTION	NO	DESCRIPTION
7V	8" HEADER VALVE	28V	DOCK CONNECTION ALARM
8V	8" VENT STACK VALVE	38V	8" VAPOR PENETRATION
10V	HIGH LEVEL/OVERFILL ALARM	39V	PRESSURE/VACUUM VALVE
11V	1-METER GAUGE STICK	50V	8" VAPOR HEADER
12V	HERMETIC SAMPLE	51V	8" VAPOR PIPELINE
16V	VAPOR VENT STACK	59V	PRESS/VAC GAUGE
19V	EMERGENCY ENGINE SHUT DOWN		ABOVE DECK PIPING

NOTE 2: TYPICAL RIGGING IN EACH TANK

NOTE 1: CONTAINMENT P/S

EX. HFL 220 SS

						KIRBY INLAND MARINE	
0 06/08/24 AC DDA REM ISSUED FOR APPROVAL						SCALE: NONE	
REV. DATE BY CHK APP REVISION DESCRIPTION						PAGE: 2 OF 4	
						KIRBY 11618	
						REV. 0	

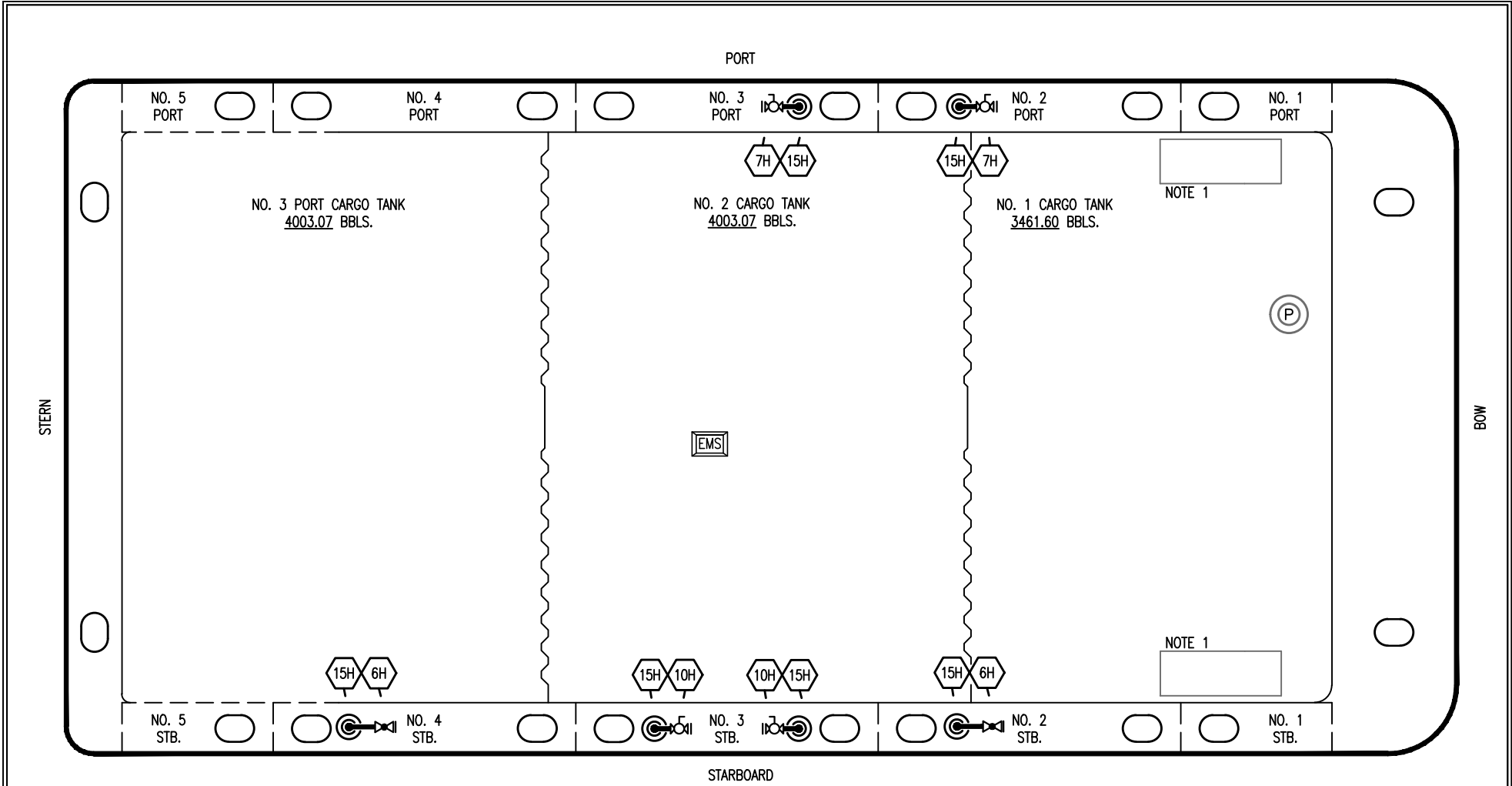


- | NO | DESCRIPTION |
|-----|--------------------------|
| 4S | CARGO TANK SUCTION VALVE |
| 18S | STRIPPING DROP |
| 33S | PUMP WELL SUCTION VALVE |
| 34S | STRIPPING PIPELINE |

NOTE 1: CONTAINMENT P/S

EX. HFL 220 SS

						KIRBY INLAND MARINE	
						KIRBY 11618	
0	06/08/24	AC	DDA	REM	ISSUED FOR APPROVAL	SCALE: NONE	
REV.	DATE	BY	CHK	APP	REVISION DESCRIPTION	PAGE: 3 OF 4	



- | NO | DESCRIPTION |
|--|---------------------|
| 6H | STEAM HEADER SUPPLY |
| 7H | CONDENSATE OUTLET |
| 10H | SUPPLY VALVE |
| 15H | STEAM DROP |
| <hr style="width: 20px; margin-left: 0;"/> | |
| | ABOVE DECK PIPING |

NOTE 1: CONTAINMENT P/S

EX. HFL 220 SS

KIRBY INLAND MARINE					
STEAM PIPING FLOW DIAGRAM					
0	06/08/24	AC	DDA	REM	ISSUED FOR APPROVAL
REV.	DATE	BY	CHK	APP	REVISION DESCRIPTION
					SCALE: NONE
					PAGE: 4 OF 4
KIRBY 11618					REV. 0