

JEFFBOAT

NO. 5 PORT

NO. 4 PORT AFT

NO. 4 PORT FWD

NO. 3 PORT AFT

NO. 3 PORT FWD

NO. 2 PORT AFT

NO. 2 PORT FWD

NO. 1 PORT

NO. 5 STB

NO. 4 STB AFT

NO. 4 STB FWD

NO. 3 STB AFT

NO. 3 STB FWD

NO. 2 STB AFT

NO. 2 STB FWD

NO. 1 STB

NO. 1 CARGO TANK  
3844.00 BBLs.

NO. 2 CARGO TANK  
3605.00 BBLs.

NO. 3 CARGO TANK  
3596.00 BBLs.

NO. 111C BLEED OFF VALVE

NO. 112C BURP VALVE RETURN TO CARGO TANK

NO. 115C BYPASS VALVE (AROUND CHECK VALVE)

NO. 119C CARGO HEADER

NO. 130C CARGO PIPELINE

NO. 137C CARGO DROP

NO. 1C CARGO TANK VALVE

NO. 2C LOAD VALVE

NO. 3C MASTER SUCTION VALVE

NO. 4C DISCHARGE VALVE

NO. 5C HEADER VALVE

NO. 6C SALVAGE VALVE

NO. 8C RELIEF VALVE

NO. 9Cg CHECK VALVE

NO. 9Cb CHECK VALVE

NOTE 1: CONTAINMENT - PORT & STB.

**KIRBY INLAND MARINE**

**CARGO**

**PIPING FLOW DIAGRAM**

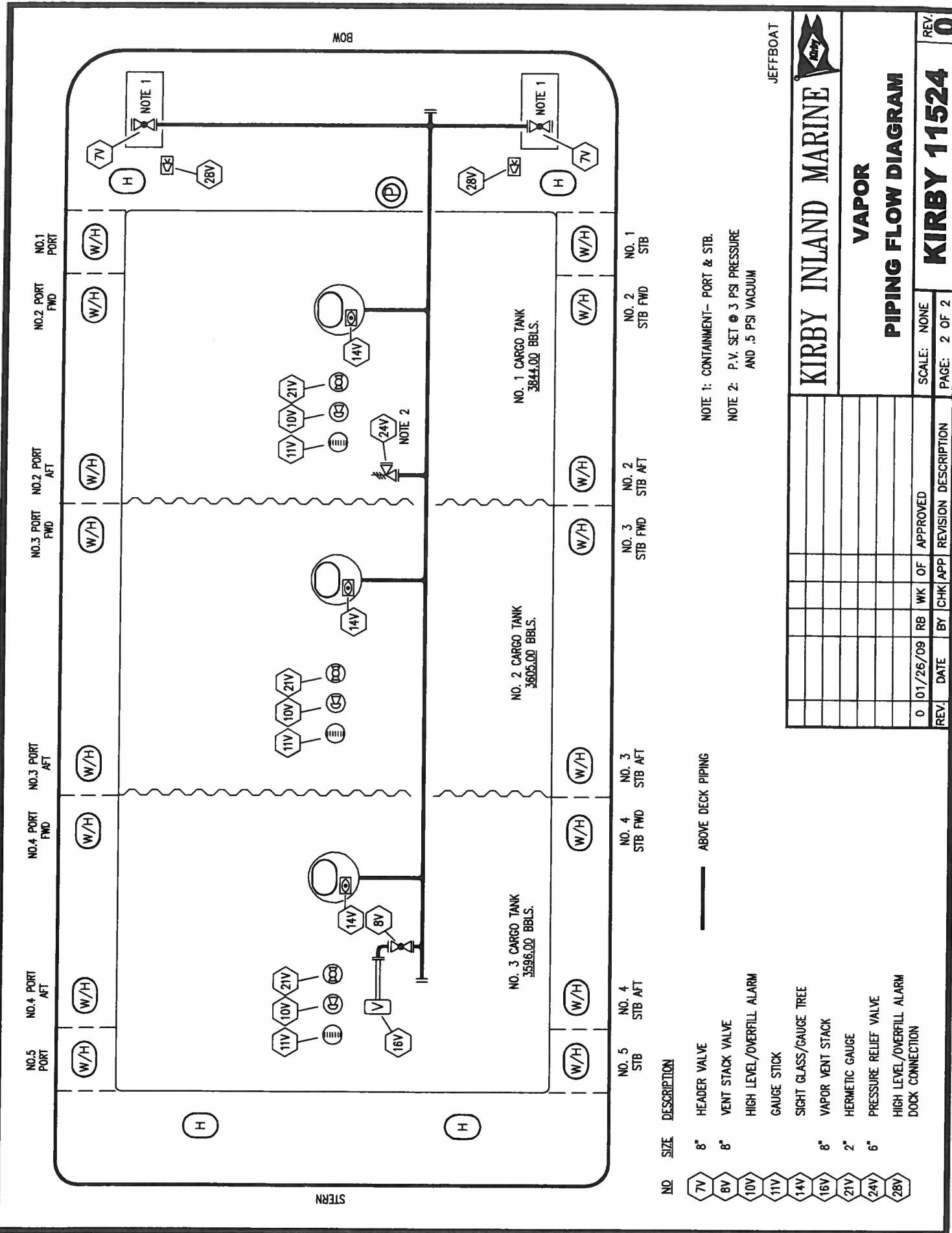
REV.	DATE	BY	CHK	APP	REVISION	DESCRIPTION
0	01/26/09	RB	WK	OF	APPROVED	

SCALE: NONE

PAGE: 1 OF 2

**KIRBY 11524**

REV. **0**



NOTE 1: CONTAINMENT- PORT & STB.  
 NOTE 2: P.V. SET @ 3 PSI PRESSURE  
 AND .5 PSI VACUUM

NO.	SIZE	DESCRIPTION
7V	8"	HEADER VALVE
8V	8"	VENT STACK VALVE
10V		HIGH LEVEL/OVERFILL ALARM
11V		GAUGE STICK
14V		SIGHT GLASS/GAUGE TREE
16V	8"	VAPOR VENT STACK
21V	2"	HERMETIC GAUGE
24V	6"	PRESSURE RELIEF VALVE
28V		HIGH LEVEL/OVERFILL ALARM DOCK CONNECTION

JEFFBOAT



**KIRBY INLAND MARINE**  
**VAPOR PIPING FLOW DIAGRAM**

REV.	DATE	BY	CHK	APP	REVISION	DESCRIPTION
0	01/26/09	RB	WK	OF	APPROVED	

SCALE: NONE  
 PAGE: 2 OF 2

**KIRBY 11524**  
 REV. 0