

NO. 3 CARGO TANK
3584.00 BBLs.

NO. 2 CARGO TANK
3612.00 BBLs.

NO. 1 CARGO TANK
3845.00 BBLs.

NO	SIZE	DESCRIPTION	NO	SIZE	DESCRIPTION
1C	8"	CARGO TANK VALVE	15C	2"	BYPASS VALVE (AROUND CHECK VALVE)
2C	8"	LOAD VALVE	19C	8"	CARGO HEADER
3C	10"	MASTER SUCTION VALVE	30C	10"	CARGO PIPELINE
4C	8"	DISCHARGE VALVE	36C		PRESSURE GAUGE
5C	8"	HEADER VALVE	37C		CARGO DROP
6C	8"	SALVAGE VALVE			— ABOVE DECK PIPING
8C	6"	RELIEF VALVE			- - - BELOW DECK PIPING
9C	8"	CHECK VALVE			

NOTE 1: CONTAINMENT- PORT & STB.

JEFFBOAT

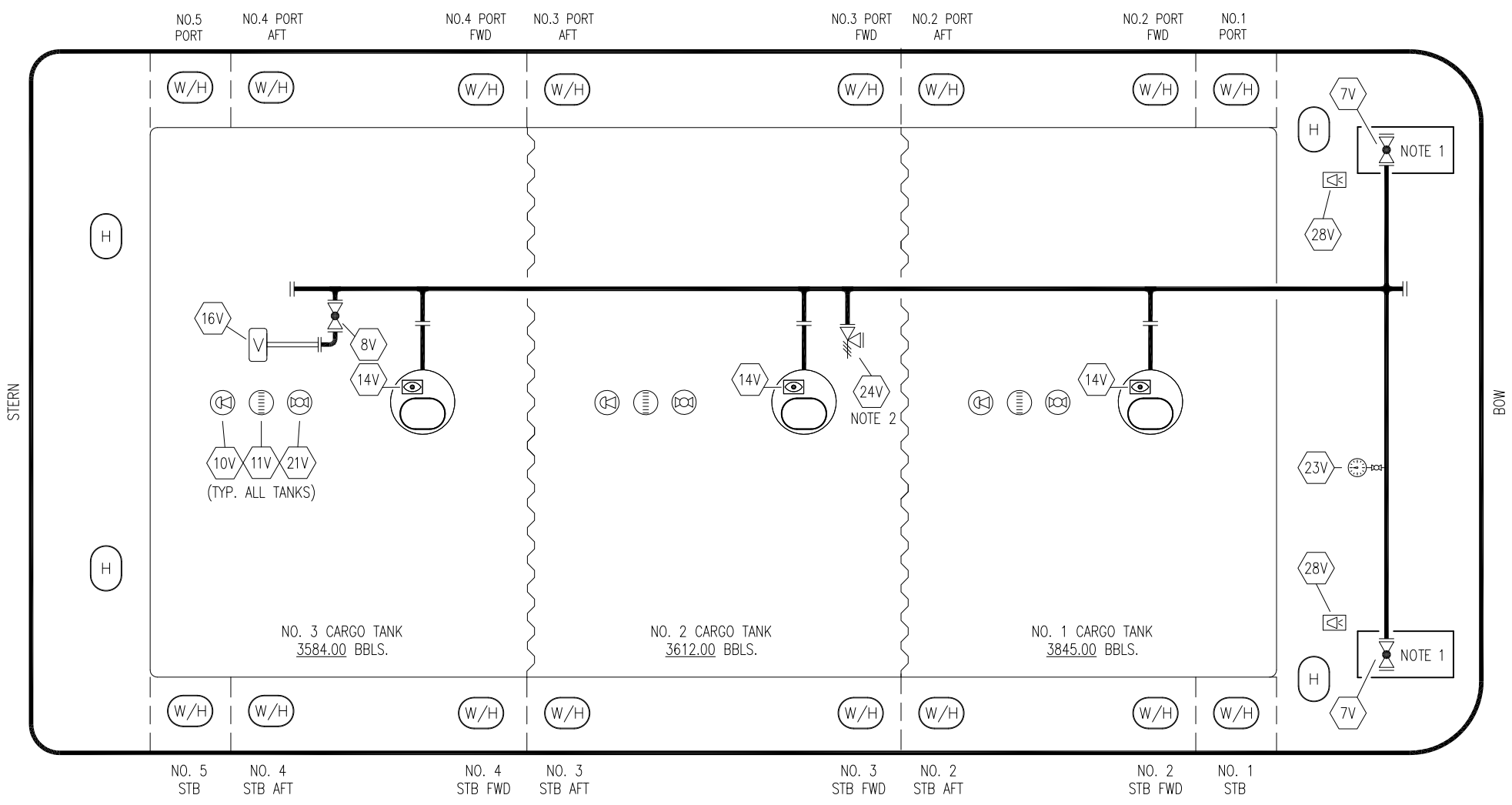
KIRBY INLAND MARINE 

**CARGO
PIPING FLOW DIAGRAM**

REV.	DATE	BY	CHK	APP	REVISION DESCRIPTION
1	09/16/22	MRV	DDA	CW	REVISED PER CLIENT COMMENTS
0	01/26/09	RB	WK	OF	APPROVED

SCALE: NONE
PAGE: 1 OF 3

KIRBY 11523 REV. **1**



NO	SIZE	DESCRIPTION
7V	8"	HEADER VALVE
8V	8"	VENT STACK VALVE
10V		HIGH LEVEL/OVERFILL ALARM
11V		GAUGE STICK
14V		SIGHT GLASS/GAUGE TREE
16V	8"	VAPOR VENT STACK
21V	2"	HERMETIC GAUGE
23V		PRESSURE GAUGE
24V	6"	PRESSURE RELIEF VALVE
28V		HIGH LEVEL/OVERFILL ALARM DOCK CONNECTION

— ABOVE DECK PIPING

NOTE 1: CONTAINMENT- PORT & STB.
 NOTE 2: P.V. SET @ 3 PSI PRESSURE AND .5 PSI VACUUM

JEFFBOAT

REV.	DATE	BY	CHK	APP	REVISION DESCRIPTION
1	09/16/22	MRV	DDA	CW	REVISED PER CLIENT COMMENTS
0	01/26/09	RB	WK	OF	APPROVED

KIRBY INLAND MARINE

VAPOR PIPING FLOW DIAGRAM

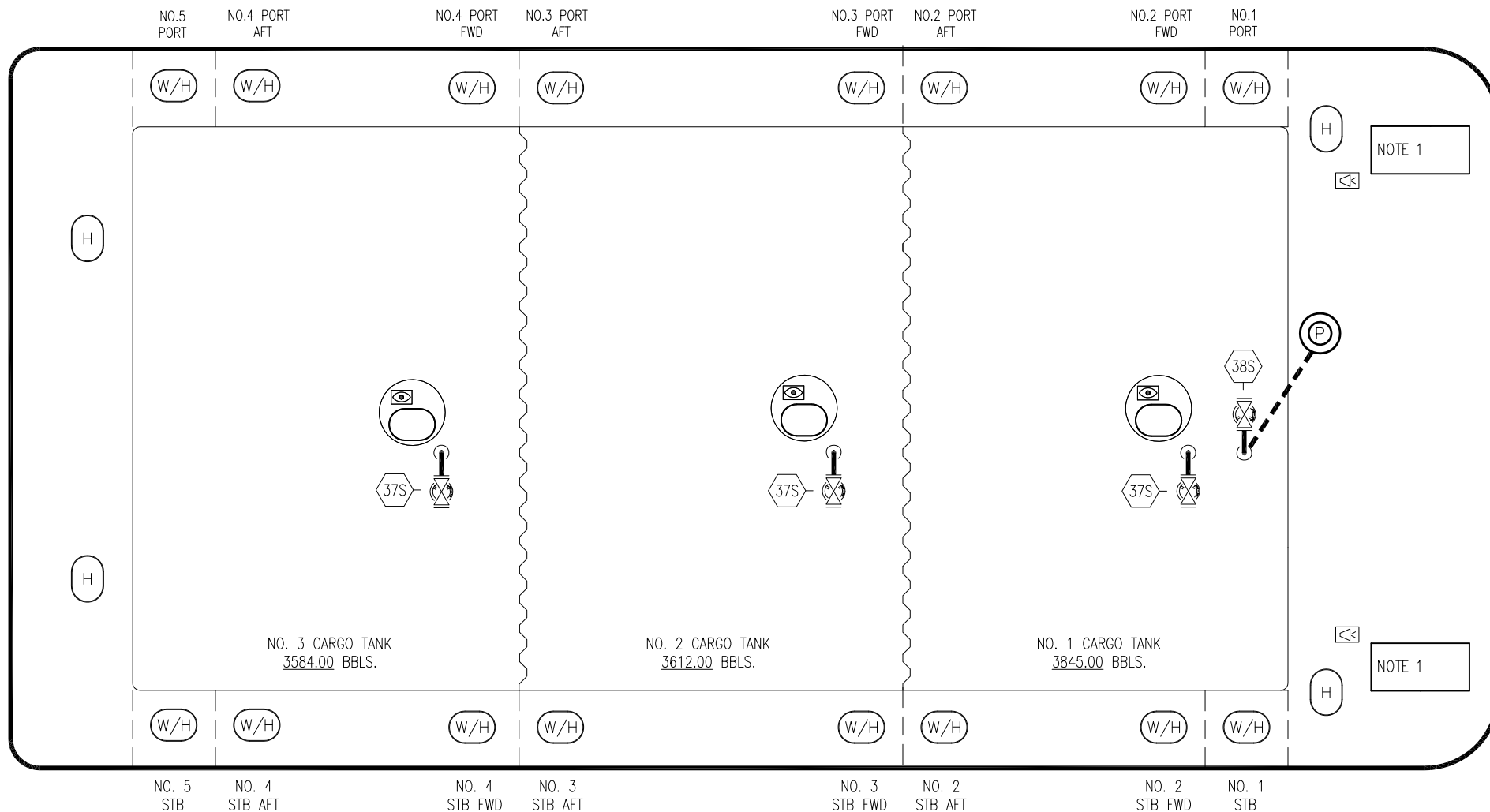
KIRBY 11523

REV. 1

SCALE: NONE
PAGE: 2 OF 3

STERN

BOW



- NO DESCRIPTION
- 37S CARGO SUMP SUCTION VALVE
- 38S DEEP WELL CAN SUCTION VALVE
- ABOVE DECK PIPING
- - - BELOW DECK PIPING

NOTE 1: CONTAINMENT- PORT & STB.

JEFFBOAT

						KIRBY INLAND MARINE	
						STIRPPING	
						PIPPING FLOW DIAGRAM	
0	09/16/22	MRV	DDA	CW	ISSUED FOR APPROVAL	SCALE: NONE	KIRBY 11523
REV.	DATE	BY	CHK	APP	REVISION DESCRIPTION	PAGE: 3 OF 3	
						REV. 0	