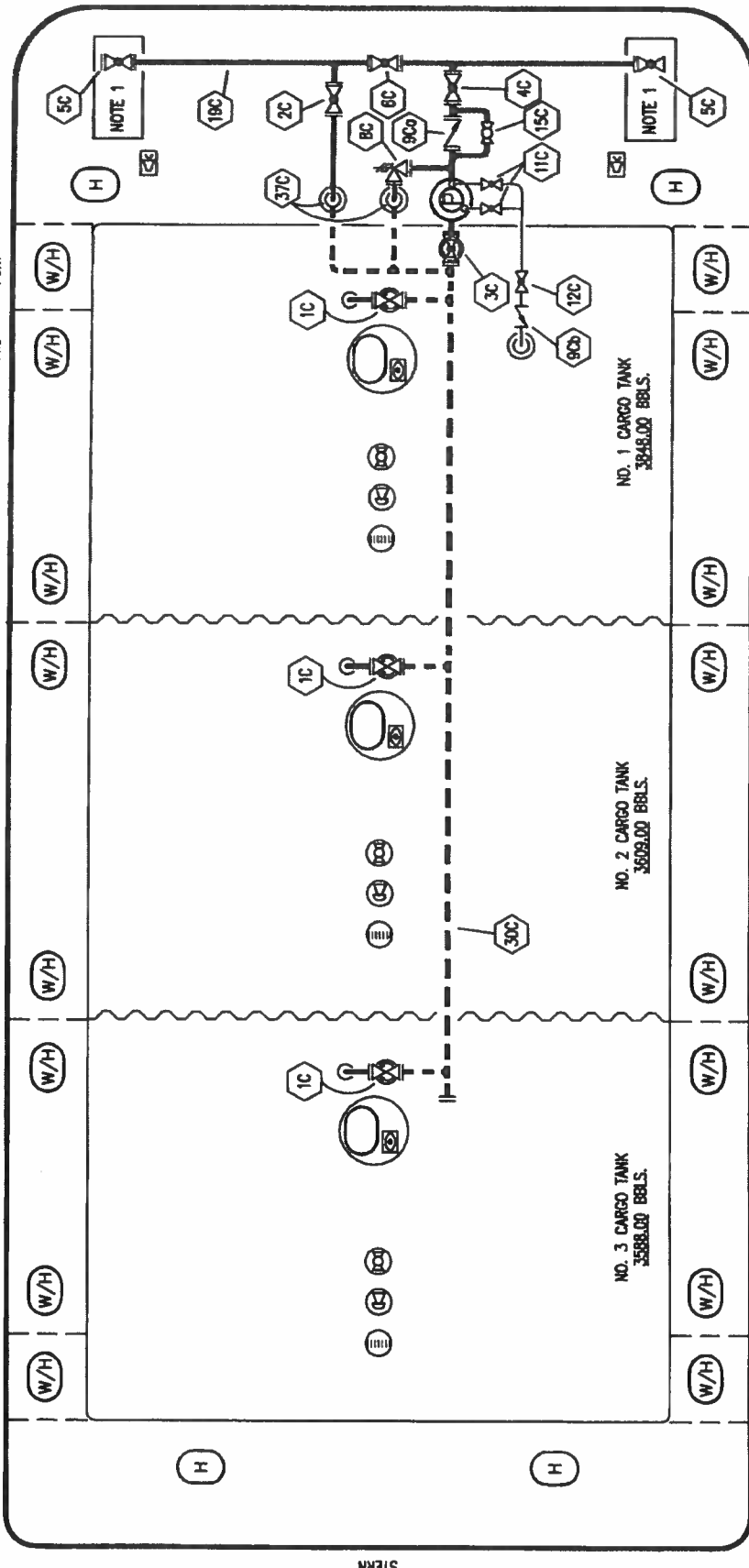


NO. 5 PORT AFT NO. 4 PORT FWD NO. 3 PORT AFT NO. 2 PORT AFT NO. 3 PORT FWD NO. 2 PORT FWD NO. 1 PORT FWD NO. 1 PORT



NO. 1 CARGO TANK  
3848.00 BBLs.

NO. 2 CARGO TANK  
3609.00 BBLs.

NO. 3 CARGO TANK  
3588.00 BBLs.

NO. 5 STB NO. 4 STB AFT NO. 3 STB AFT NO. 2 STB AFT NO. 1 STB AFT NO. 2 STB FWD NO. 1 STB FWD NO. 1 STB

NO	SIZE	DESCRIPTION	NO	SIZE	DESCRIPTION
1C	8"	CARGO TANK VALVE	11C	1"	BLEED OFF VALVE
2C	8"	LOAD VALVE	12C	1"	BURP VALVE RETURN TO CARGO TANK
3C	10"	MASTER SUCTION VALVE	15C	2"	BYPASS VALVE (AROUND CHECK VALVE)
4C	8"	DISCHARGE VALVE	19C	8"	CARGO HEADER
5C	8"	HEADER VALVE	30C	10"	CARGO PIPELINE
6C	8"	SALVAGE VALVE	37C		CARGO DROP
8C	6"	RELIEF VALVE			ABOVE DECK PIPING
9C	8"	CHECK VALVE			BELOW DECK PIPING
9Cb	1"	CHECK VALVE			

NOTE 1: CONTAINMENT- PORT & STB.

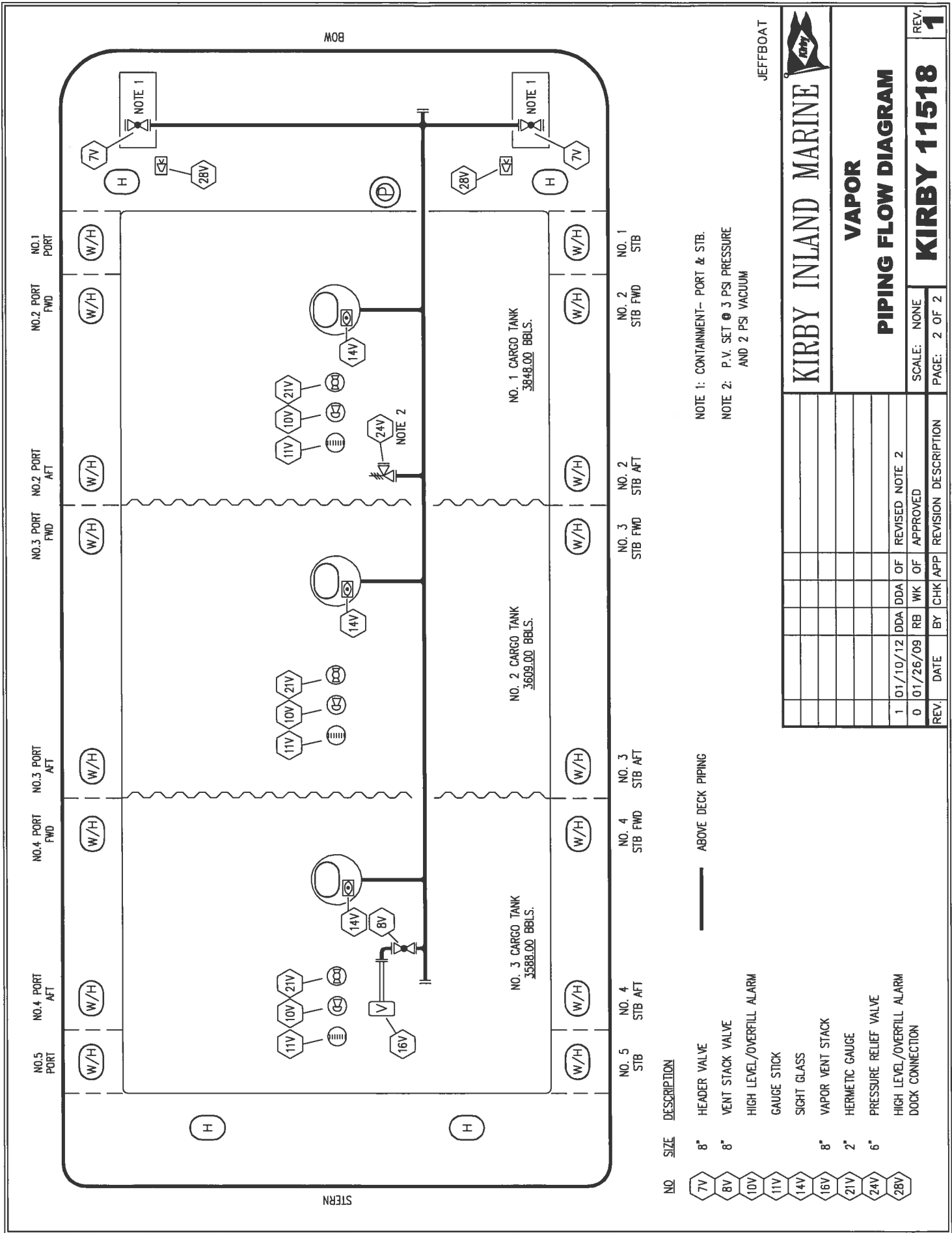
JEFFBOAT



KIRBY INLAND MARINE

**CARGO PIPING FLOW DIAGRAM**

REV.	DATE	BY	CHK/APP	REVISION DESCRIPTION	SCALE:	PAGE:	REV.
0	01/26/09			APPROVED	NONE	1 OF 2	0



NOTE 1: CONTAINMENT - PORT & STB.  
 NOTE 2: P.V. SET @ 3 PSI PRESSURE AND 2 PSI VACUUM

NO.	SIZE	DESCRIPTION
7V	8"	HEADER VALVE
8V	8"	VENT STACK VALVE
10V		HIGH LEVEL/OVERFILL ALARM
11V		GAUGE STICK
14V		SIGHT GLASS
16V	8"	VAPOR VENT STACK
21V	2"	HERMETIC GAUGE
24V	6"	PRESSURE RELIEF VALVE
28V		HIGH LEVEL/OVERFILL ALARM

JEFFBOAT

**KIRBY INLAND MARINE**

**VAPOR PIPING FLOW DIAGRAM**

REV.	DATE	BY	CHK	APP	REVISION DESCRIPTION
1	01/10/12	DDA	DDA	OF	REVISED NOTE 2
0	01/26/09	RB	WK	OF	APPROVED

SCALE: NONE  
PAGE: 2 OF 2

**KIRBY 11518**  
REV. 1