

JEFFBOAT



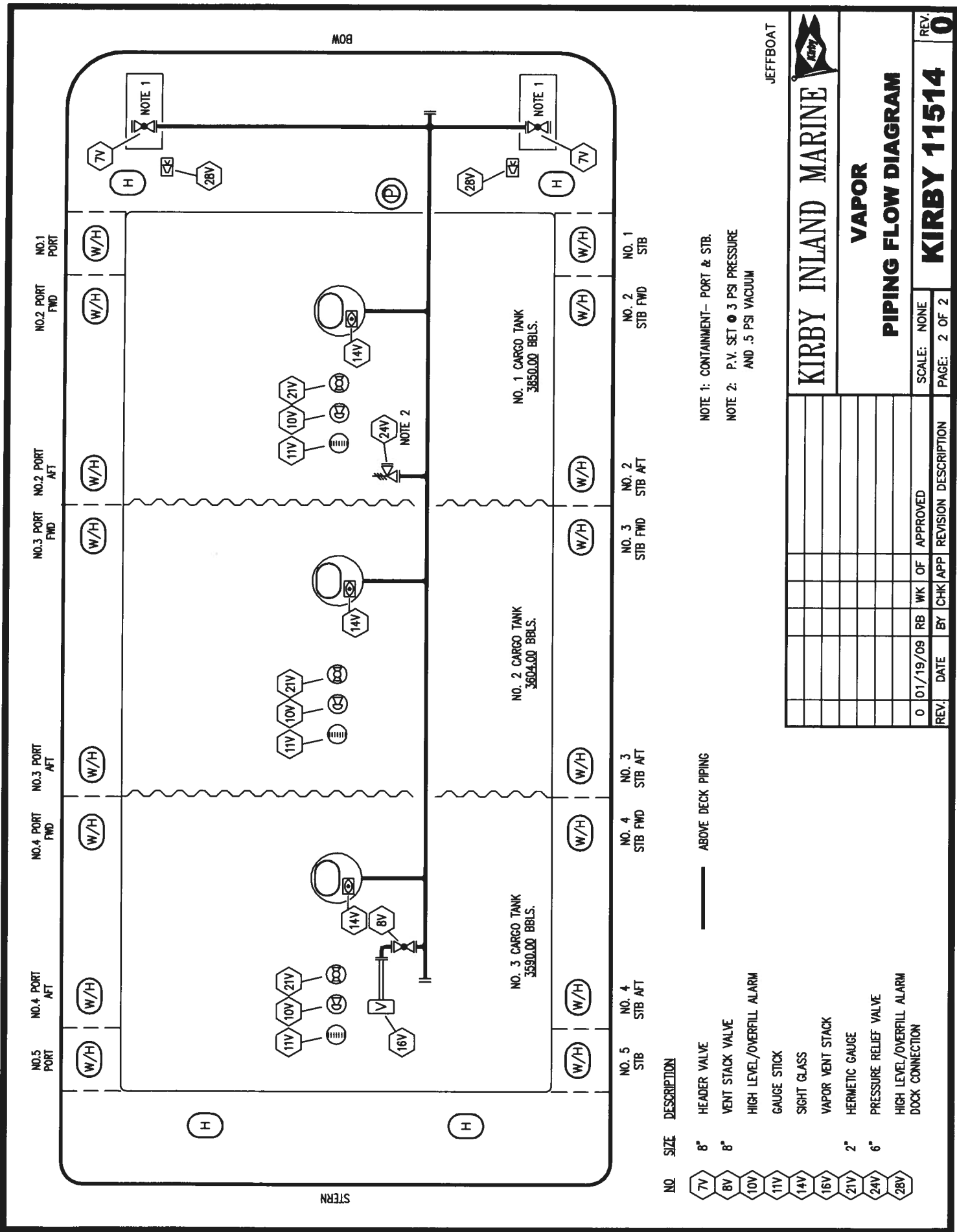
**CARGO  
PIPING FLOW DIAGRAM**

NOTE 1: CONTAINMENT- PORT & STB.

NO	SIZE	DESCRIPTION
11C	1"	BLEED OFF VALVE
12C	1"	BURP VALVE RETURN TO CARGO TANK
15C	2"	BYPASS VALVE (AROUND CHECK VALVE)
19C	8"	CARGO HEADER
30C	10"	CARGO PIPELINE
1C	8"	CARGO TANK VALVE
2C	8"	LOAD VALVE
3C	10"	MASTER SUCTION VALVE
4C	8"	DISCHARGE VALVE
5C	8"	HEADER VALVE
6C	8"	SALVAGE VALVE
8C	6"	RELIEF VALVE
9Ca	8"	CHECK VALVE
9Cb	1"	CHECK VALVE

NO. 5 STB	NO. 4 STB AFT	NO. 3 STB AFT	NO. 2 STB AFT	NO. 1 STB
(W/H)	(W/H)	(W/H)	(W/H)	(W/H)

REV.	DATE	BY	CHK APP	REVISION DESCRIPTION
0	01/19/09	RB	WK OF	APPROVED



NOTE 1: CONTAINMENT- PORT & STB.  
 NOTE 2: P.V. SET @ 3 PSI PRESSURE  
 AND .5 PSI VACUUM

JEFFBOAT



**KIRBY INLAND MARINE**

**VAPOR PIPING FLOW DIAGRAM**

REV.	DATE	BY	CHK	APP	REVISION DESCRIPTION	SCALE:	PAGE:
0	01/19/09	RB	WK	OF	APPROVED	NONE	2 OF 2

NO. 5 PORT STB  
 NO. 4 PORT STB AFT  
 NO. 3 PORT STB AFT  
 NO. 2 PORT STB FWD  
 NO. 1 PORT STB

- NO. SIZE DESCRIPTION
- 7V 8" HEADER VALVE
  - 8V 8" VENT STACK VALVE
  - 10V 8" HIGH LEVEL/OVERFILL ALARM
  - 11V GAUGE STICK
  - 14V SIGHT GLASS
  - 16V VAPOR VENT STACK
  - 21V HERMETIC GAUGE
  - 24V 2" PRESSURE RELIEF VALVE
  - 28V 6" HIGH LEVEL/OVERFILL ALARM DOCK CONNECTION
- ABOVE DECK PIPING