

NO	DESCRIPTION	NO	DESCRIPTION
1C	8" CARGO TANK VALVE	12C	1" BURP VALVE RETURN TO CARGO TANK
2C	8" LOAD VALVE	16C	DISCHARGE PRESSURE GAUGE
2S	2" SUMP STRIPPING VAVVE	18S	STRIPPING DROP ☉
3C	10" MASTER SUCTION VALVE	19C	8" CARGO HEADER
4C	8" DISCHARGE VALVE	24C	1" FLOW INDICATOR
5C	8" HEADER VALVE	30C	10" CARGO PIPELINE
6C	8" SALVAGE VALVE	33S	2" DEEPWELL STRIPPING SUCTION
8C	6" RELIEF VALVE	37C	CARGO DROP OR PENETRATION ☉
9C	8" CHECK VALVE	38C	6" SPARGING VALVE
10C	1" BURP VALVE	—	— ABOVE DECK PIPING
11C	1" BLEED OFF VALVE	---	--- BELOW DECK PIPING

NOTE 1: CONTAINMENT P/S

JEFFBOAT

REV.	DATE	BY	CHK	APP	REVISION DESCRIPTION
2	04/26/10	RB	RB	OF	MOVE 1C TO FORWARD
1	04/21/10	RB	RB	OF	PIPING CORRECTIONS
0	04/21/10	RB	RB	OF	APPROVED

**KIRBY INLAND MARINE** 

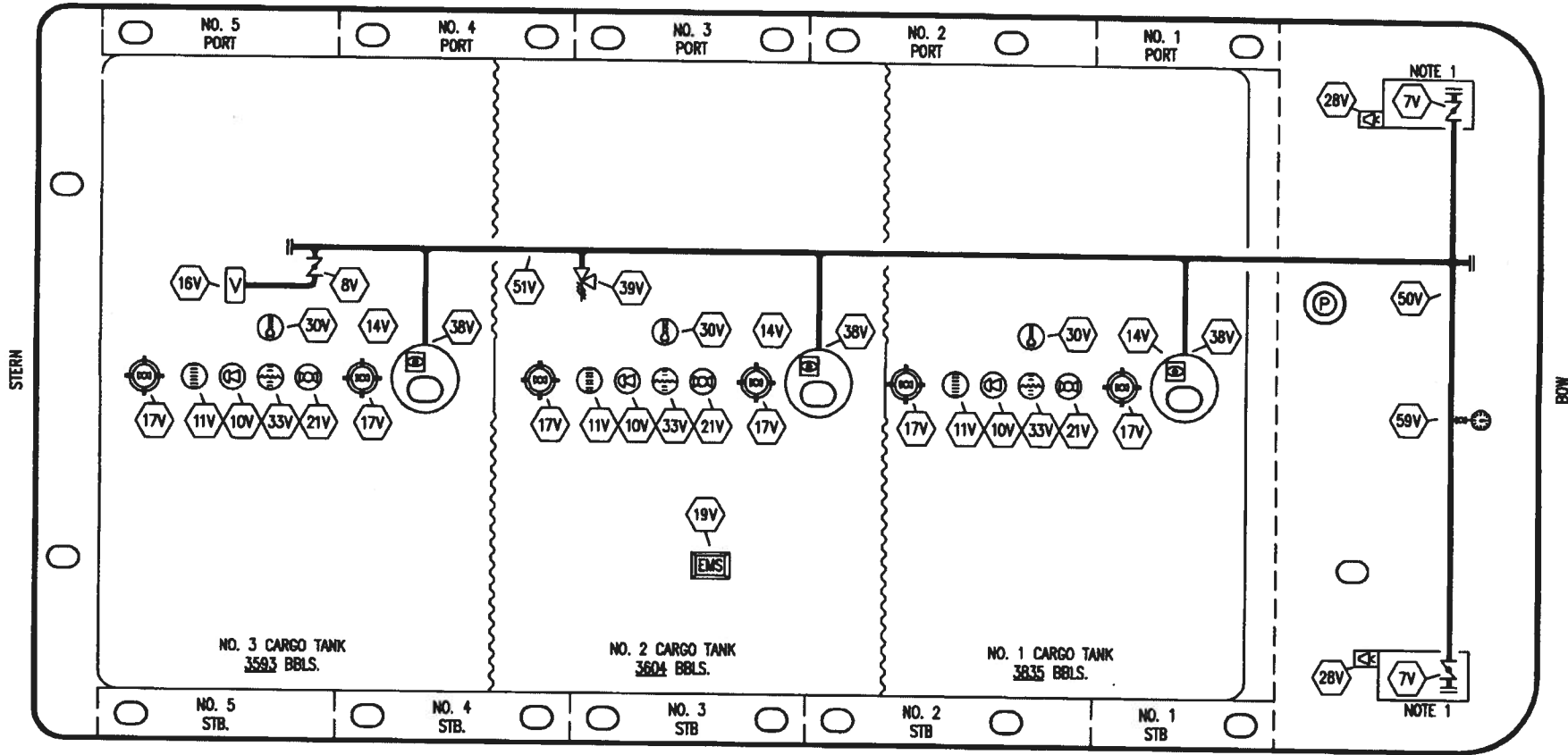
**CARGO  
PIPING FLOW DIAGRAM**

SCALE: NONE  
PAGE: 1 OF 3

**KIRBY 11511**

REV. **2**

PORT



NO. 3 CARGO TANK  
3593 BBLs.

NO. 2 CARGO TANK  
3604 BBLs.

NO. 1 CARGO TANK  
3835 BBLs.

- | NO  | DESCRIPTION                       |
|-----|-----------------------------------|
| 7V  | 8" HEADER VALVE                   |
| 8V  | 8" VENT STACK VALVE               |
| 10V | HIGH LEVEL/OVERFILL ALARM         |
| 11V | STICK GAUGE                       |
| 14V | SIGHT GLASS W/GAUGE TREE          |
| 16V | 8" VAPOR VENT STACK               |
| 17V | BUTTERWORTH W/1" OXYGEN TEST LINE |
| 19V | EMERGENCY SHUTDOWN SYSTEM         |
| 21V | 2" HERMETIC GAUGE                 |
| 28V | DOCK CONNECTION ALARM             |

- | NO  | DESCRIPTION                |
|-----|----------------------------|
| 30V | THERMAL WELL WITH PIPE CAP |
| 33V | DIGITAL FLOAT LEVEL GAUGE  |
| 38V | VAPOR PENETRATIONS (⊙)     |
| 39V | PRESS/VAC RELIEF VALVE     |
| 50V | 8" VAPOR HEADER            |
| 51V | 8" VAPOR PIPING            |
| 59V | PRESS/VAC GAUGE            |
| --- | ABOVE DECK PIPING          |
| --- | BELOW DECK PIPING          |

STARBOARD

NOTE 1: CONTAINMENT P/S

JEFFBOAT

**KIRBY INLAND MARINE** 

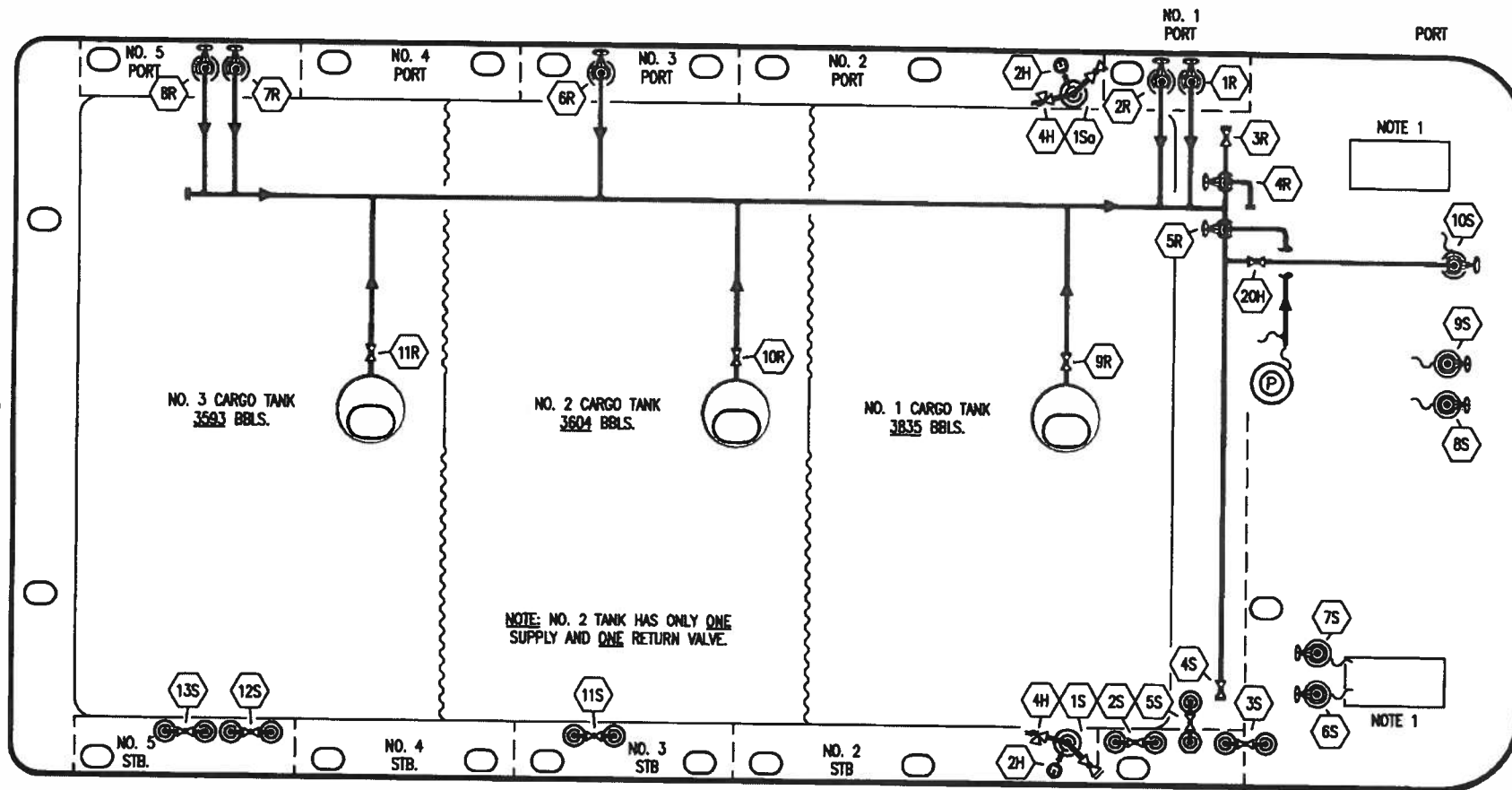
**VAPOR  
PIPING FLOW DIAGRAM**

1	04/21/10	RB	RB	OF	PIPING CORRECTIONS
0	04/21/10	RB	RB	OF	APPROVED
REV.	DATE	BY	CHK	APP	REVISION DESCRIPTION

SCALE: NONE  
PAGE: 2 OF 3

**KIRBY 11511**

REV. **1**



NOTE: NO. 2 TANK HAS ONLY ONE SUPPLY AND ONE RETURN VALVE.

- NO. 15 STB. MAIN SUPPLY VALVE
- NO. 15a PORT MAIN SUPPLY VALVE
- NO. 2S AFT NO. 1 TANK SUPPLY VALVE
- NO. 3S FWD. NO. 1 TANK SUPPLY VALVE
- NO. 4S STB. STEAM HEADER VALVE
- NO. 5S PUMP CAN STEAM SUPPLY
- NO. 6S CARGO HEADER SUPPLY VALVE
- NO. 7S VAPOR HEADER SUPPLY VALVE
- NO. 8S LOAD LINE SUPPLY VALVE
- NO. 9S PUMP DISCHARGE PIPING SUPPLY VALVE
- NO. 10S VAPOR PIPELINE SUPPLY VALVE

- NO. 11S NO. 2 TANK SUPPLY VALVE
- NO. 12S FWD. NO. 3 TANK SUPPLY VALVE
- NO. 13S AFT NO. 3 TANK SUPPLY VALVE
- NO. 1R FWD. NO. 1 TANK RETURN VALVE
- NO. 2R AFT NO. 1 TANK RETURN VALVE
- NO. 3R PORT STEAM HEADER VALVE
- NO. 4R RETURN VALVE
- NO. 5R RETURN VLV FROM BURP LINE AND P/V
- NO. 6R NO. 2 TANK RETURN VALVE
- NO. 7R FWD. NO. 3 TANK RETURN VALVE

- NO. 8R AFT NO. 3 TANK RETURN VALVE
- NO. 9R NO. 1 TANK SIGHT GLASS RETURN
- NO. 10R NO. 2 TANK SIGHT GLASS RETURN
- NO. 11R NO. 3 TANK SIGHT GLASS RETURN

- NO. 2H PRESSURE GAUGE
- NO. 4H RELIEF VALVE
- NO. 15H STEAM DROP
- NO. 20H CROSSOVER VALVE

NO. 1 STB STARBOARD

NOTE 1: CONTAINMENT P/S JEFFBOAT

0	04/21/10	RB	RB	OF	APPROVED
REV.	DATE	BY	CHK	APP	REVISION DESCRIPTION

**KIRBY INLAND MARINE**

**STEAM PIPING FLOW DIAGRAM**

**KIRBY 11511**

SCALE: NONE  
PAGE: 3 OF 3

REV. 0