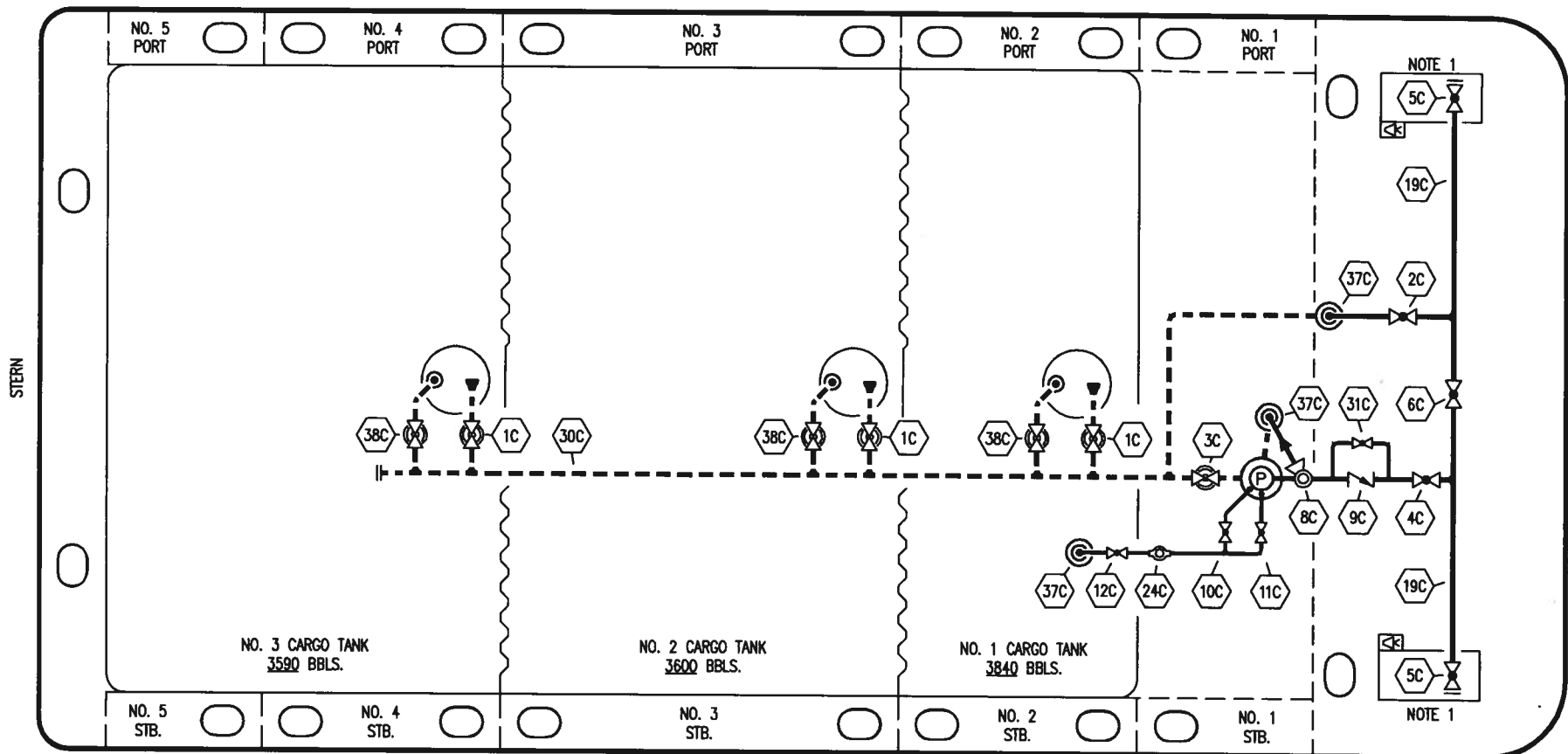


PORT



NO. 3 CARGO TANK
3590 BBLs.

NO. 2 CARGO TANK
3600 BBLs.

NO. 1 CARGO TANK
3840 BBLs.

NOTE 1

NOTE 1

STARBOARD

NOTE 1: CONTAINMENT P/S

- | | | | |
|-----|--------------------------|-------|------------------------------------|
| NO | DESCRIPTION | NO | DESCRIPTION |
| 1C | 8" CARGO TANK VALVE | 12C | 1" BURP VALVE RETURN TO CARGO TANK |
| 2C | 8" LOAD VALVE | 19C | 8" CARGO HEADER |
| 3C | 10" MASTER SUCTION VALVE | 24C | 1" FLOW INDICATOR |
| 4C | 8" DISCHARGE VALVE | 30C | 10" CARGO PIPELINE |
| 5C | 8" HEADER VALVE | 31C | 2" BYPASS VALVE |
| 6C | 8" SALVAGE VALVE | 37C | CARGO DROP (◎) |
| 8C | 6" RELIEF VALVE | 38C | 6" SPARGING VALVE |
| 9C | 8" CHECK VALVE | — | — ABOVE DECK PIPING |
| 10C | 1" BURP VALVE | - - - | - - - BELOW DECK PIPING |
| 11C | 1" BLEED OFF VALVE | | |

JEFFBOAT

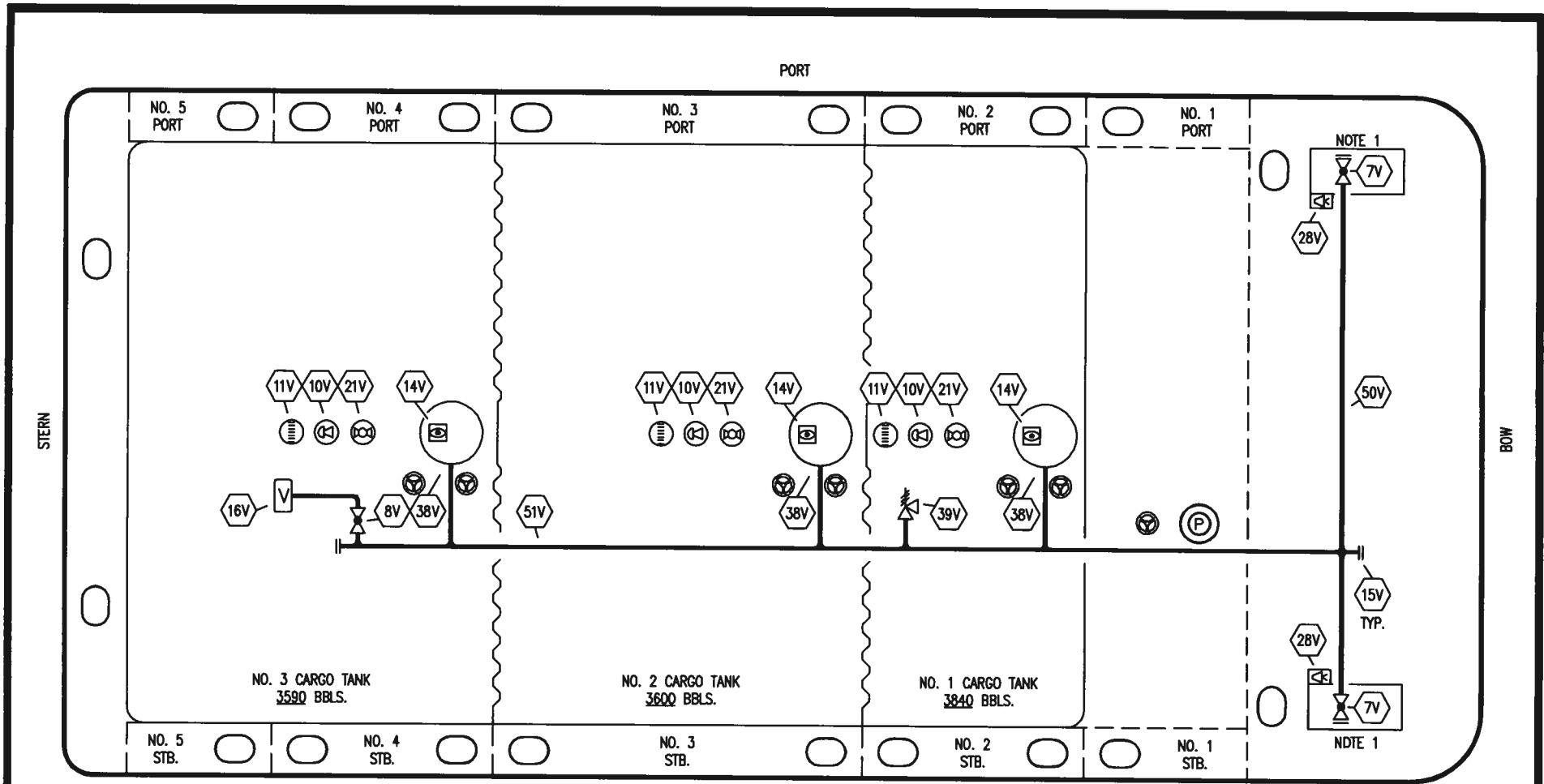
KIRBY INLAND MARINE 

**CARGO
PIPING FLOW DIAGRAM**

0	09/07/09	RB	RB	OF	APPROVED
REV.	DATE	BY	CHK	APP	REVISION DESCRIPTION

SCALE: NONE
PAGE: 1 OF 2

KIRBY 11510 REV. **0**



STARBOARD

- | | | | |
|-----------|---------------------------|-----------|--------------------------|
| NO | DESCRIPTION | NO | DESCRIPTION |
| 7V | 8" HEADER VALVE | 38V | 8" VAPOR PENETRATION |
| 8V | 8" VENT STACK VALVE | 39V | 6" PRESSURE/VACUUM VALVE |
| 10V | HIGH LEVEL/OVERFILL ALARM | 50V | 8" VAPOR HEADER |
| 11V | GAUGE STICK | 51V | 8" VAPOR PIPELINE |
| 14V | SIGHT GLASS W/ GAUGE TREE | — | ABOVE DECK PIPING |
| 15V | INSPECTION PORT | | |
| 16V | 8" VAPOR VENT STACK | | |
| 21V | 2" HERMETIC GAUGE | | |
| 28V | DOCK CONNECTION ALARM | | |

NOTE 1: CONTAINMENT P/S

NOTE 2: PV SET @ 3 PSI PRES./ .05 PSI VAC.

JEFFBOAT

0	09/07/09	RB	RB	OF	APPROVED
REV.	DATE	BY	CHK	APP	REVISION DESCRIPTION

KIRBY INLAND MARINE

VAPOR

PIPING FLOW DIAGRAM

SCALE: NONE	KIRBY 11510	REV. 0
PAGE: 2 OF 2		