



NOTE 1: CONTAINMENT P&S

<b>NO</b>	<b>DESCRIPTION</b>	<b>NO</b>	<b>DESCRIPTION</b>
1C	CARGO TANK VALVE	15C	BYPASS VALVE
2C	LOAD VALVE	19C	CARGO HEADER
3C	MASTER SUCTION VALVE	30C	CARGO PIPELINE
4C	DISCHARGE VALVE	36C	PRESSURE GAUGE
5C	HEADER VALVE	37C	CARGO DROP
9C	CHECK VALVE		ABOVE DECK PIPING
10C	BURP VALVE		BELOW DECK PIPING
12C	BURP VALVE RETURN TO CARGO TANK		

CARUTHERSVILLE SHIPYARD - EX: DC 736

**KIRBY INLAND MARINE** 

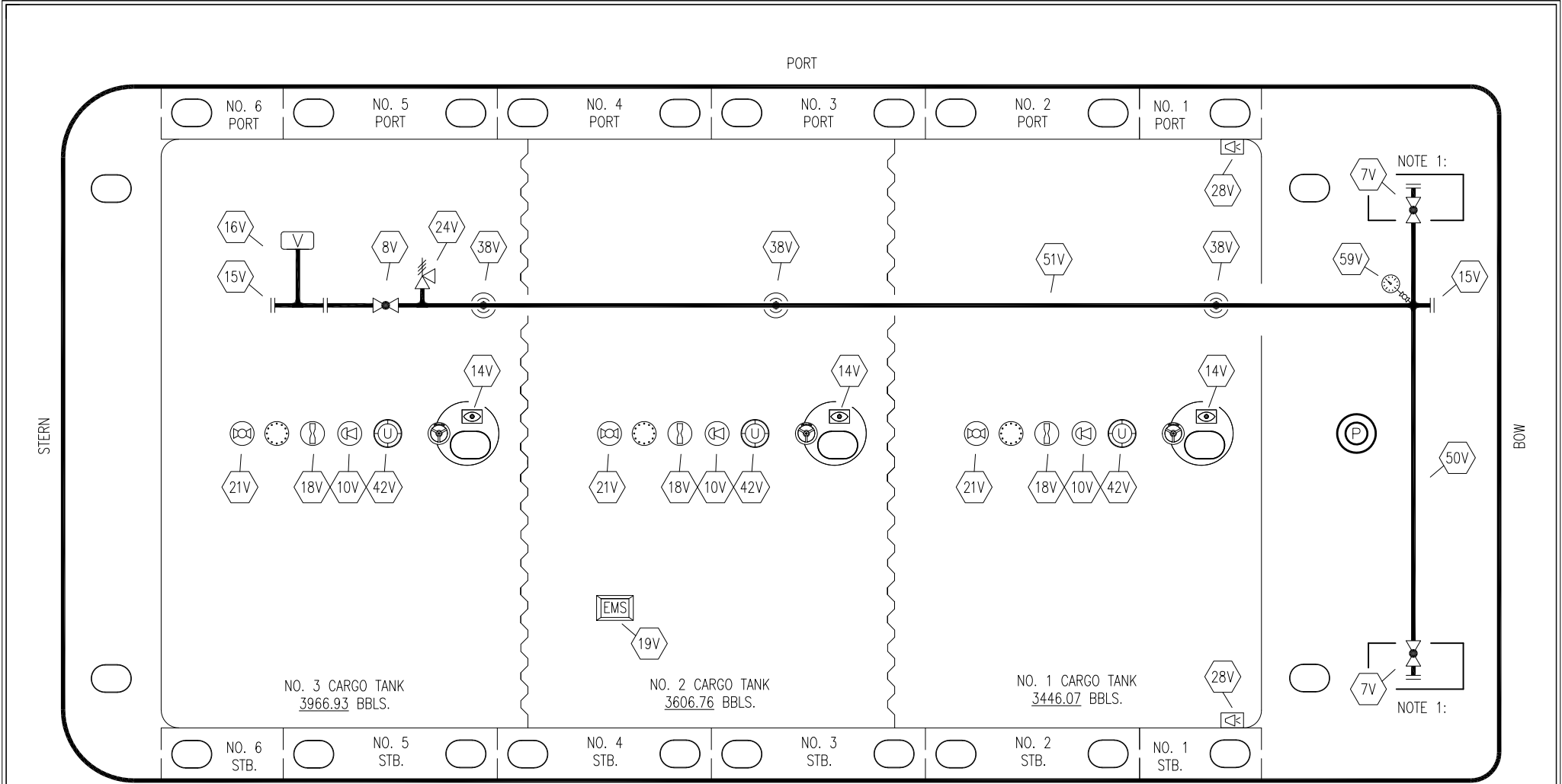
**CARGO  
PIPING FLOW DIAGRAM**

2	08/02/22	MRV	DDA	DAR	REVISED PER CLIENT COMMENTS
1	05/24/17	WFB	DDA		REVISED PER CLIENT COMMENTS
0	07/06/09	FP	RB	OF	APPROVED
REV.	DATE	BY	CHK	APP	REVISION DESCRIPTION

SCALE: NONE  
PAGE: 1 OF 3

**KIRBY 11508**

REV. **2**




NOTE 1: CONTAINMENT P&S

CARUTHERSVILLE SHIPYARD -- EX: DC 736

- |     |                           |     |                        |
|-----|---------------------------|-----|------------------------|
| NO  | DESCRIPTION               | NO  | DESCRIPTION            |
| 7V  | HEADER VALVE              | 28V | DOCK CONNECTION ALARM  |
| 8V  | VENT STACK VALVE          | 38V | VAPOR PENETRATIONS (⊙) |
| 10V | HIGH LEVEL/OVERFILL ALARM | 42V | ULLAGE                 |
| 14V | SIGHT GLASS W/GAUGE TREE  | 50V | VAPOR HEADER           |
| 15V | INSPECTION PORT           | 51V | VAPOR PIPELINE         |
| 16V | VAPOR VENT STACK          | 53V | HIGH LEVEL STICK       |
| 18V | RESTRICTIVE GAUGE TUBE    | 54V | LOW LEVEL STICK        |
| 19V | EMERGENCY SHUTDOWN SYSTEM | 59V | PRESS/VAC GAUGE        |
| 21V | HERMETIC GAUGE            | —   | ABOVE DECK PIPING      |
| 24V | PRES/VAC RELIEF VALVE     |     |                        |

1	08/02/22	MRV	DDA	DAR	REVISED PER CLIENT COMMENTS
0	07/06/09	FP	RB	OF	APPROVED
REV.	DATE	BY	CHK	APP	REVISION DESCRIPTION



**KIRBY INLAND MARINE**

**VAPOR PIPING FLOW DIAGRAM**

**KIRBY 11508**

SCALE: NONE	REV. 1
PAGE: 2 OF 3	

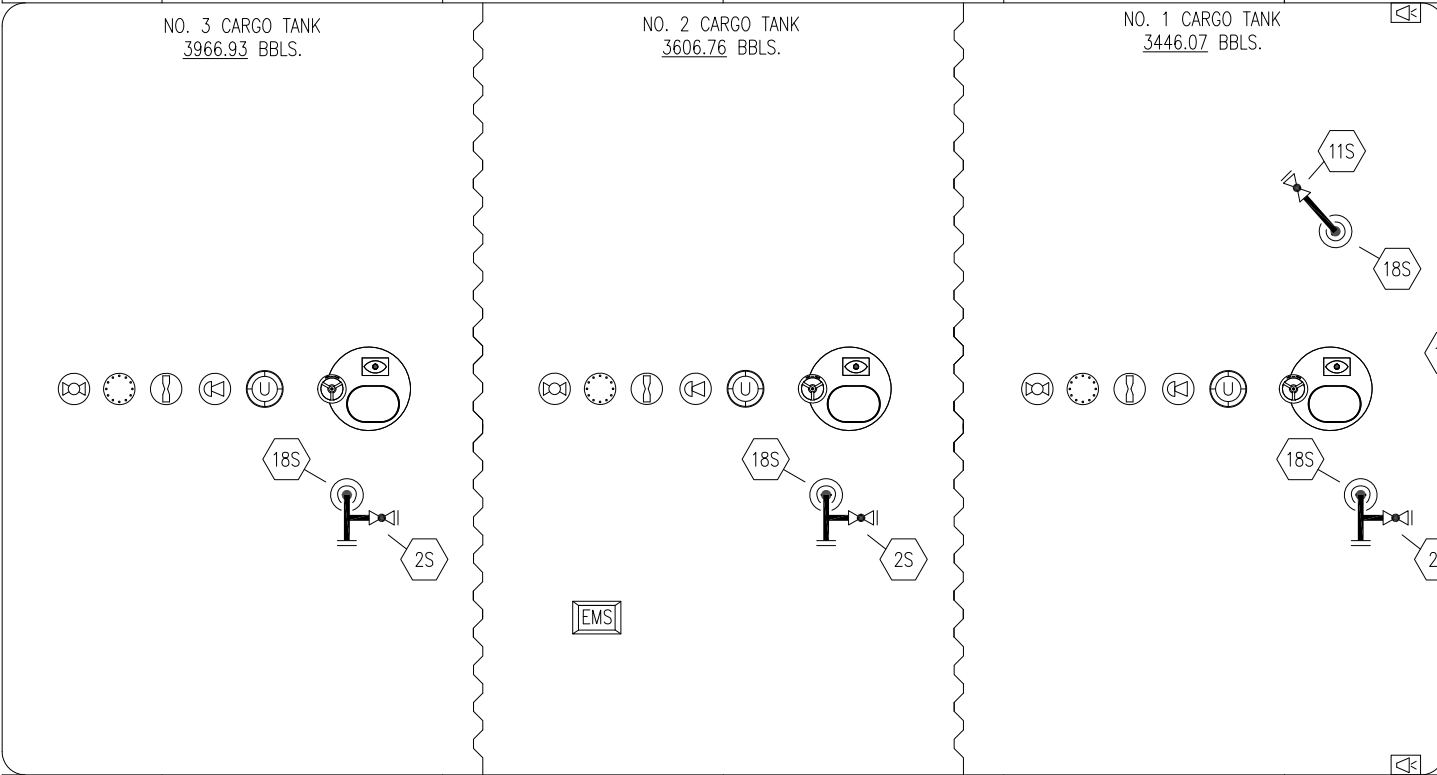
PORT

STERN

BOW

STARBOARD

NO. 6 PORT   NO. 5 PORT   NO. 4 PORT   NO. 3 PORT   NO. 2 PORT   NO. 1 PORT



NO. 6 STB.   NO. 5 STB.   NO. 4 STB.   NO. 3 STB.   NO. 2 STB.   NO. 1 STB.

- NO DESCRIPTION
- 2S CARGO SUMP SUCTION VALVE
- 11S LOWER CARGO PIPELINE SUCTION VALVE
- 18S STRIPPING DROP
- 33S PUMP WELL SUCTION
- ABOVE DECK PIPING

CARUTHERSVILLE SHIPYARD -- EX: DC 736

1	08/02/22	MRV	DDA	DAR	REVISED PER CLIENT COMMENTS	
0	07/06/09	FP	RB	OF	APPROVED	
REV.	DATE	BY	CHK	APP	REVISION DESCRIPTION	

**KIRBY INLAND MARINE** 

**STRIPPING  
PIPING FLOW DIAGRAM**

SCALE: NONE

**KIRBY 11508**

REV. 1

PAGE: 3 OF 3