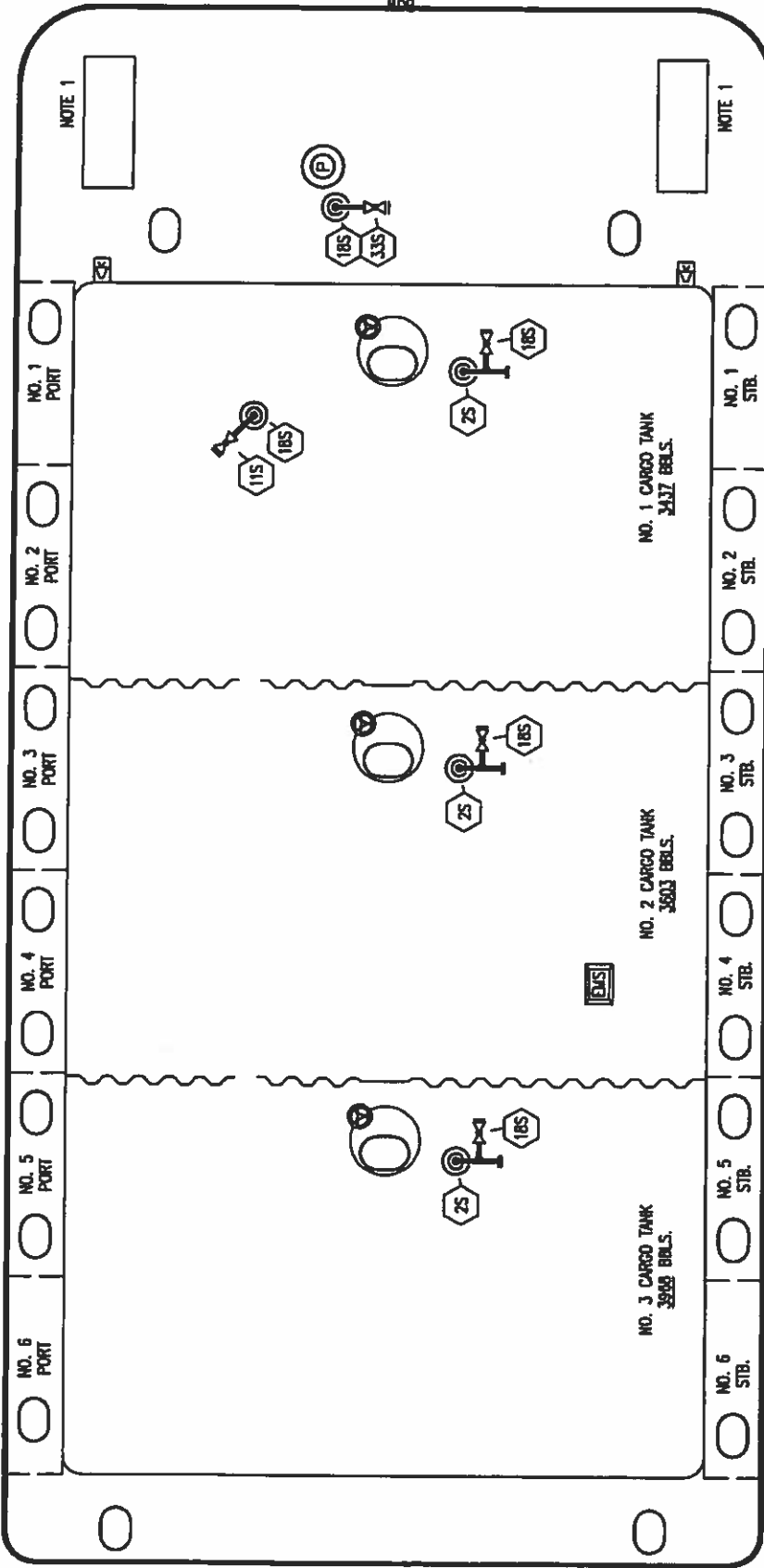


PORT



STARBOARD

NOTE 1: CONTAMINANT P&S

- NO 25
 - NO 115
 - NO 185
 - NO 335
- DESCRIPTION
- CARGO SUMP SUCTION VALVE
 - LOWER CARGO PIPELINE SUCTION VALVE
 - STRIPPING DROP
 - PUMP WELL SUCTION

ST. LOUIS SHIPYARD - EX: DC 735



KIRBY INLAND MARINE

STRIPPING
PIPING FLOW DIAGRAM

| REV. | DATE | BY | CHK/APP | REVISION DESCRIPTION | SCALE: | PAGE: | REV. |
|------|----------|----|---------|----------------------|--------|--------|------|
| 0 | 10/04/10 | RB | OF | APPROVED | NONE | 3 OF 3 | 0 |

KIRBY 11507