

- | | | | |
|-----|----------------------|-----|-----------------------------------|
| NO | DESCRIPTION | NO | DESCRIPTION |
| 1C | CARGO TANK VALVE | 12C | BURP VALVE RETURN TO CARGO TANK |
| 2C | LOAD VALVE | 13C | CARGO HEADER BLOCK VALVE |
| 3C | MASTER SUCTION VALVE | 15C | BYPASS VALVE (AROUND CHECK VALVE) |
| 4C | DISCHARGE VALVE | 19C | CARGO HEADER |
| 5C | HEADER VALVE | 30C | CARGO PIPELINE |
| 8C | RELIEF VALVE | 37C | CARGO DROP |
| 9C | CHECK VALVE | 56C | PRESSURE RELIEF VALVE |
| 10C | BURP VALVE | 61C | PUMPWELL VENT VALVE |
| 11C | BLEED OFF VALVE | 62C | PUMPWELL VENT CHECK VALVE |
| | ABOVE DECK PIPING | | |
| | BELOW DECK PIPING | | |

NOTE 1: CONTAINMENT P/S

0	11/29/23	MRV	DDA	CW	ISSUED FOR APPROVAL	
REV.	DATE	BY	CHK	APP	REVISION DESCRIPTION	

EX. FMT 1020

KIRBY INLAND MARINE

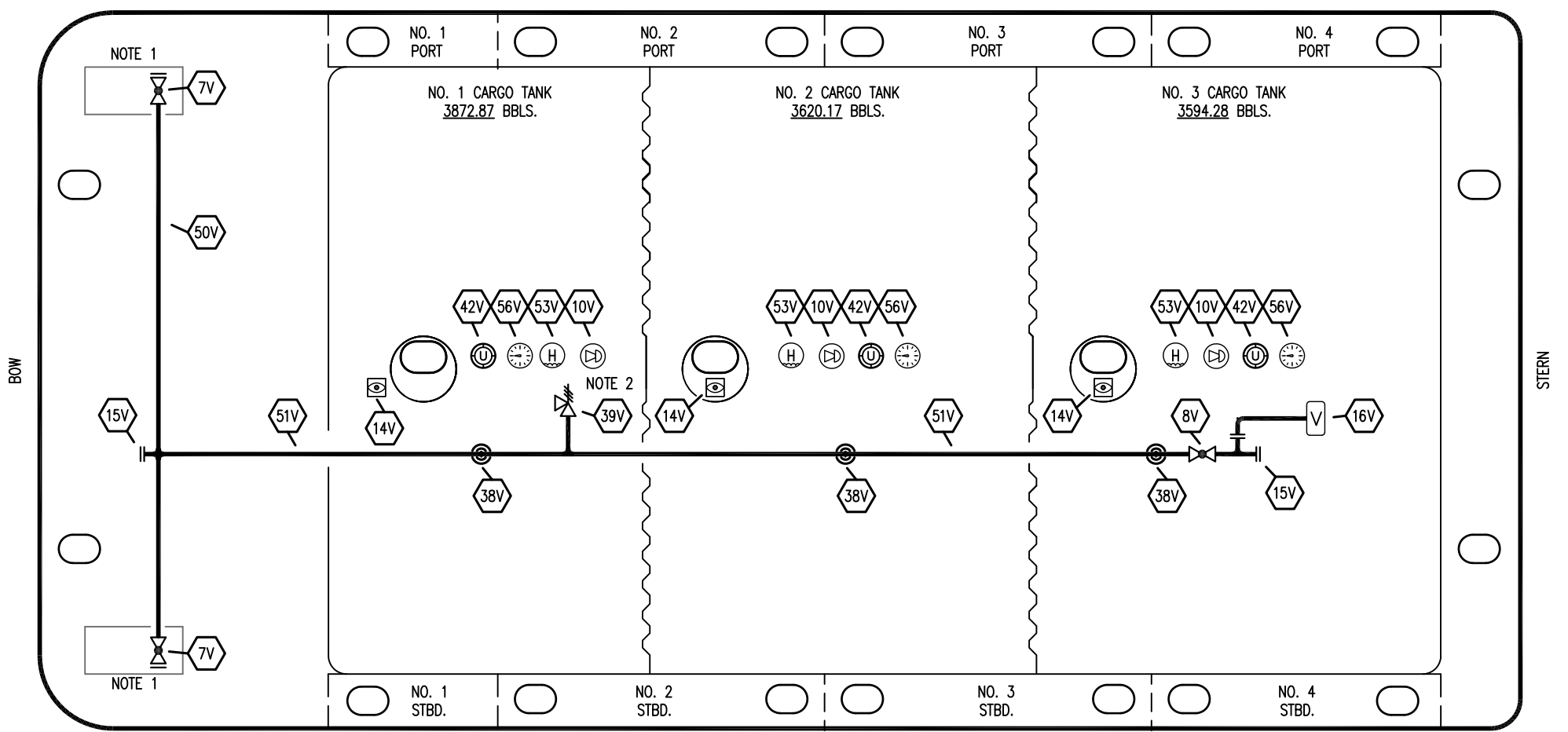
**CARGO
PIPING FLOW DIAGRAM**

SCALE: NONE
PAGE: 1 OF 3

KIRBY 11402

REV. **0**

STARBOARD



BOW

STERN

PORT

NO	DESCRIPTION	NO	DESCRIPTION
7V	HEADER VALVE	39V	PRESSURE/VACUUM VALVE
8V	VENT STACK VALVE	42V	ULLAGE HATCH
10V	HIGH LEVEL/OVERFILL ALARM	50V	VAPOR HEADER
14V	SIGHT GLASS W/ GAUGE TREE	51V	VAPOR PIPELINE
15V	INSPECTION PORT	53V	ONE METER STICK GAUGE
16V	VAPOR VENT STACK	56V	GAUGE POINT
38V	VAPOR PENETRATION	—	ABOVE DECK PIPING

NOTE 2: P/V VALVE SETTINGS: 3-PSI PRESSURE; 1-PSI VACUUM
 NOTE 1: CONTAINMENT P/S

EX. FMT 1020

REV.	DATE	BY	CHK	APP	REVISION DESCRIPTION
0	11/29/23	MRV	DDA	CW	ISSUED FOR APPROVAL

KIRBY INLAND MARINE

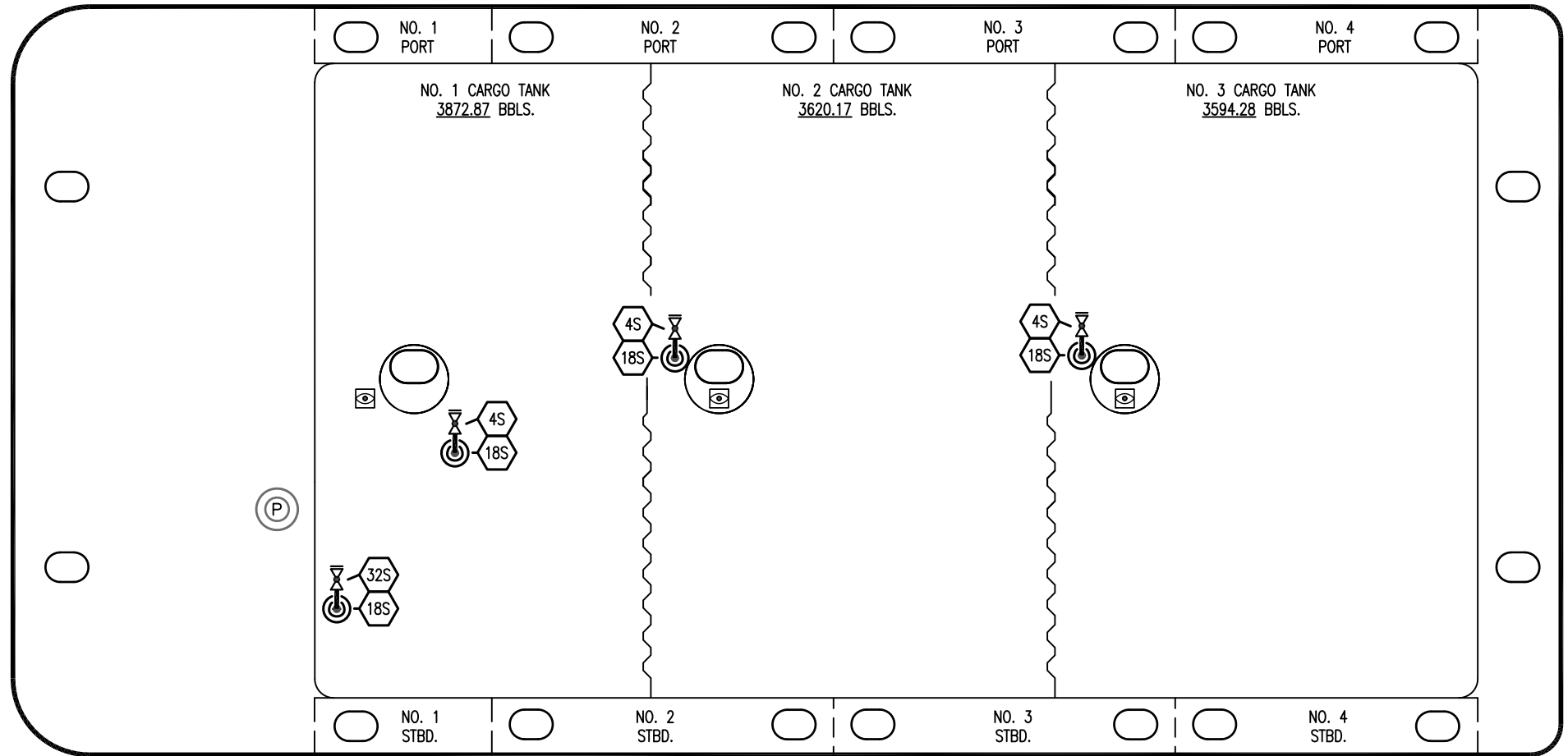
VAPOR PIPING FLOW DIAGRAM

SCALE: NONE	<h2 style="margin: 0;">KIRBY 11402</h2>	REV. 0
PAGE: 2 OF 3		

STARBOARD

BOW

STERN



PORT

- | NO | DESCRIPTION |
|-----|---------------------------|
| 4S | CARGO TANK SUCTION VALVE |
| 18S | STRIPPING DROP |
| 32S | PUMP WELL STRIPPING VALVE |
| — | ABOVE DECK PIPING |

NOTE 1: CONTAINMENT P/S

EX. FMT 1020

0	11/29/23	MRV	DDA	CW	ISSUED FOR APPROVAL	
REV.	DATE	BY	CHK	APP	REVISION DESCRIPTION	

KIRBY INLAND MARINE

**STRIPPING
PIPING FLOW DIAGRAM**

SCALE: NONE
PAGE: 3 OF 3

KIRBY 11402 REV. **0**