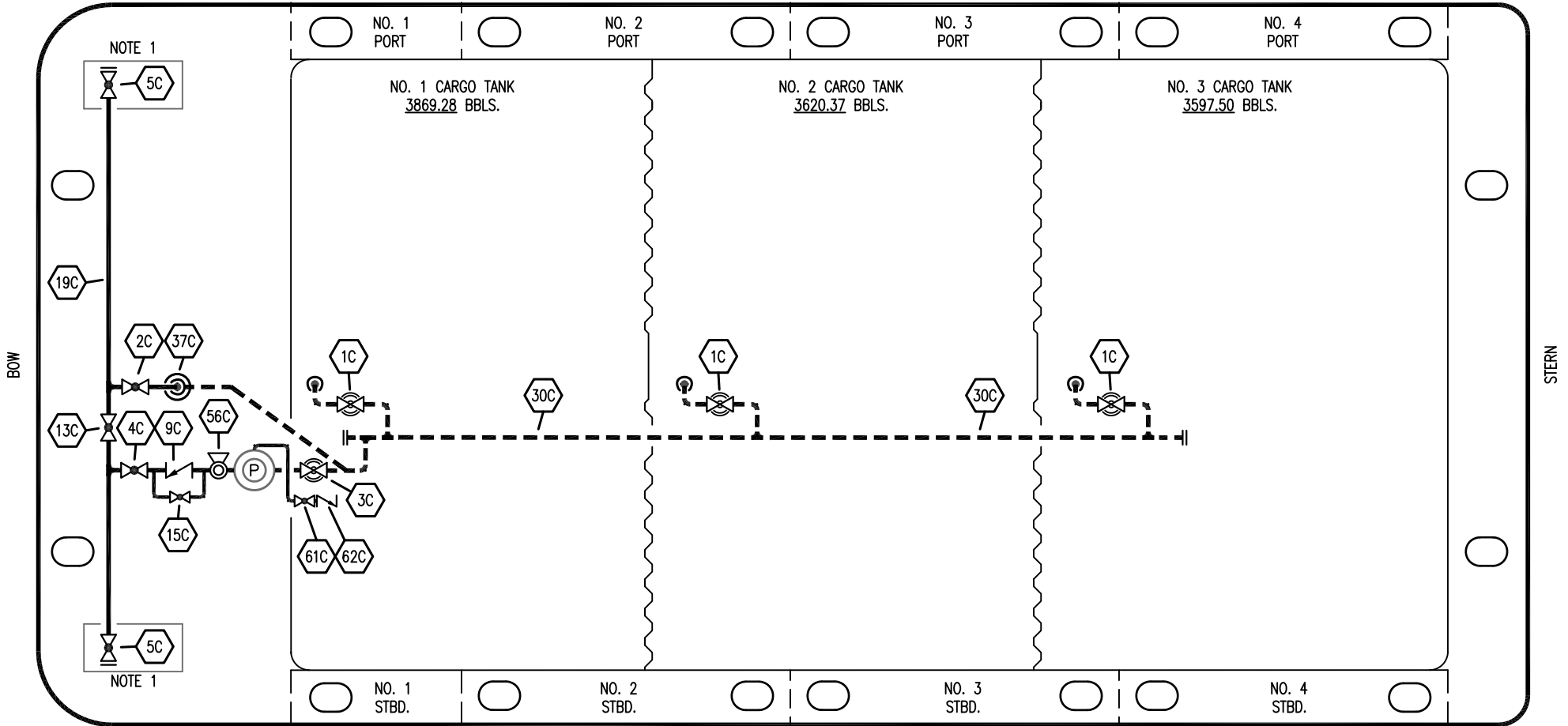


PORT



STARBOARD

- | | | | |
|-----------|----------------------|-----------|-----------------------------------|
| NO | DESCRIPTION | NO | DESCRIPTION |
| 1C | CARGO TANK VALVE | 12C | BURP VALVE RETURN TO CARGO TANK |
| 2C | LOAD VALVE | 13C | CARGO HEADER BLOCK VALVE |
| 3C | MASTER SUCTION VALVE | 15C | BYPASS VALVE (AROUND CHECK VALVE) |
| 4C | DISCHARGE VALVE | 19C | CARGO HEADER |
| 5C | HEADER VALVE | 30C | CARGO PIPELINE |
| 8C | RELIEF VALVE | 37C | CARGO DROP |
| 9C | CHECK VALVE | 56C | PRESSURE RELIEF VALVE |
| 10C | BURP VALVE | 61C | PUMPWELL VENT VALVE |
| 11C | BLEED OFF VALVE | 62C | PUMPWELL VENT CHECK VALVE |
| | | — | ABOVE DECK PIPING |
| | | - - - | BELOW DECK PIPING |

NOTE 1: CONTAINMENT P/S

0	12/12/23	MRV	DDA	ASM	ISSUED FOR APPROVAL
REV.	DATE	BY	CHK	APP	REVISION DESCRIPTION

KIRBY INLAND MARINE

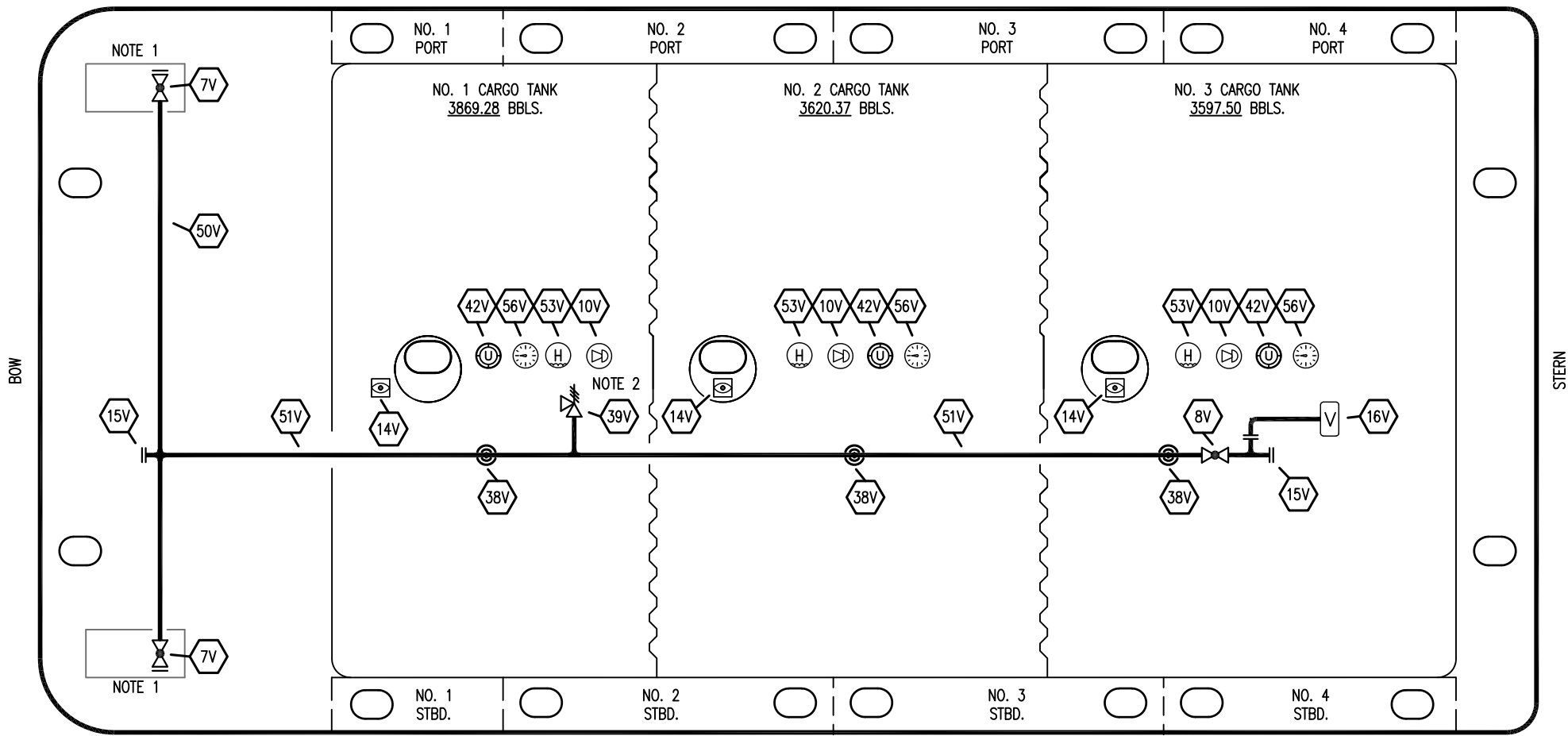
**CARGO
PIPING FLOW DIAGRAM**

SCALE: NONE
PAGE: 1 OF 3

KIRBY 11401 REV. **0**

EX. FMT 1016

STARBOARD



- | | | | |
|-----|---------------------------|-----|-----------------------|
| NO | DESCRIPTION | NO | DESCRIPTION |
| 7V | HEADER VALVE | 39V | PRESSURE/VACUUM VALVE |
| 8V | VENT STACK VALVE | 42V | ULLAGE HATCH |
| 10V | HIGH LEVEL/OVERFILL ALARM | 50V | VAPOR HEADER |
| 14V | SIGHT GLASS W/ GAUGE TREE | 51V | VAPOR PIPELINE |
| 15V | INSPECTION PORT | 53V | ONE METER STICK GAUGE |
| 16V | VAPOR VENT STACK | 56V | GAUGE POINT |
| 38V | VAPOR PENETRATION | — | ABOVE DECK PIPING |

NOTE 2: P/V VALVE SETTINGS: 3-PSI PRESSURE; 1-PSI VACUUM
 NOTE 1: CONTAINMENT P/S

EX. FMT 1016

KIRBY INLAND MARINE 

**VAPOR
PIPING FLOW DIAGRAM**

0	12/12/23	MRV	DDA	ASM	ISSUED FOR APPROVAL
REV.	DATE	BY	CHK	APP	REVISION DESCRIPTION

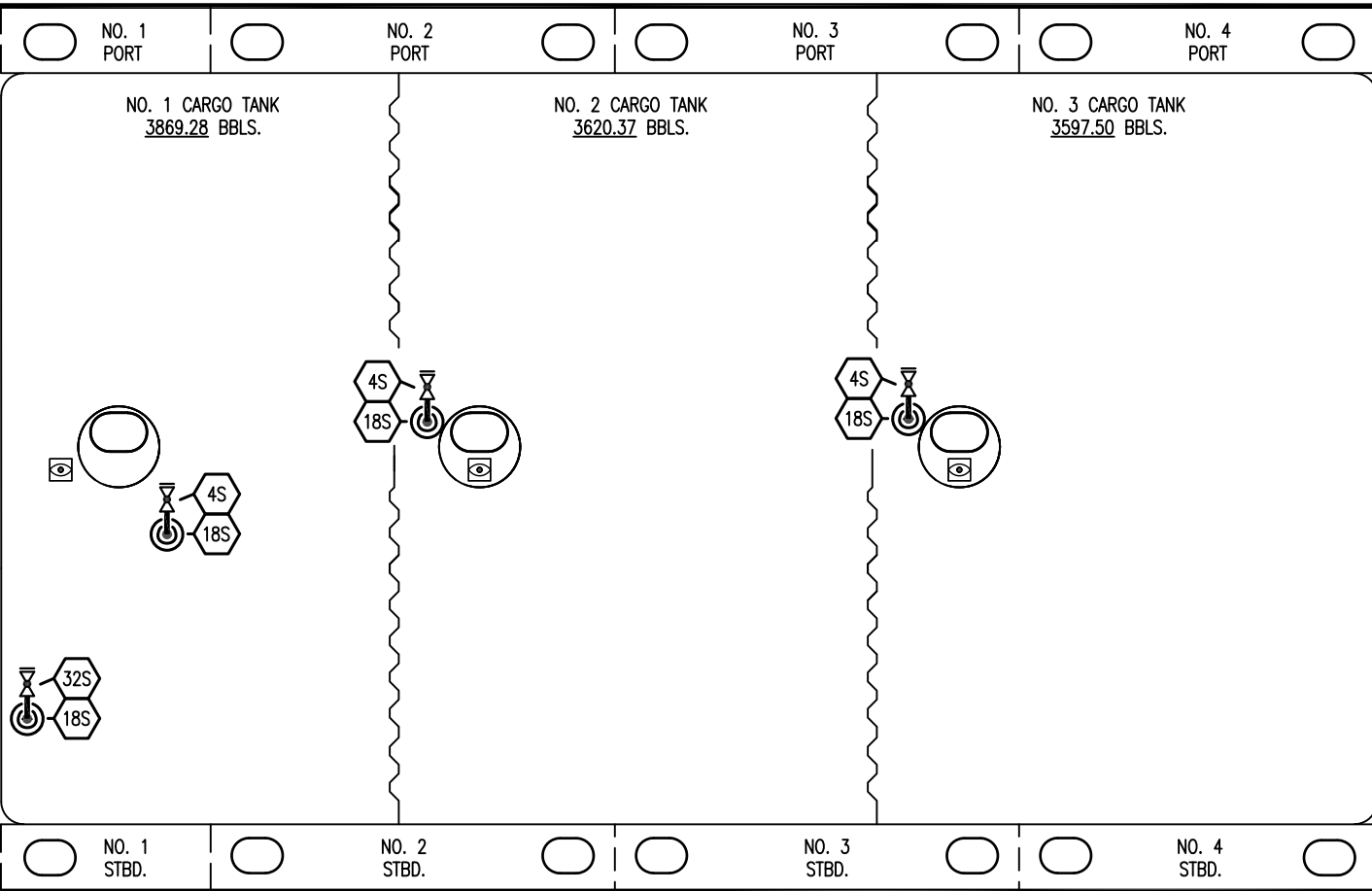
SCALE: NONE
 PAGE: 2 OF 3

KIRBY 11401 REV. **0**

STARBOARD

BOW

STERN



PORT

- | NO | DESCRIPTION |
|----|---------------------------|
| | CARGO TANK SUCTION VALVE |
| | STRIPPING DROP |
| | PUMP WELL STRIPPING VALVE |
| | ABOVE DECK PIPING |

NOTE 1: CONTAINMENT P/S

EX. FMT 1016

0	12/12/23	MRV	DDA	ASM	ISSUED FOR APPROVAL
REV.	DATE	BY	CHK	APP	REVISION DESCRIPTION

<p>KIRBY INLAND MARINE </p>	
<p align="center">STRIPPING PIPING FLOW DIAGRAM</p>	
<p>SCALE: NONE</p>	<p>KIRBY 11401</p>
<p>PAGE: 3 OF 3</p>	<p>REV. 0</p>