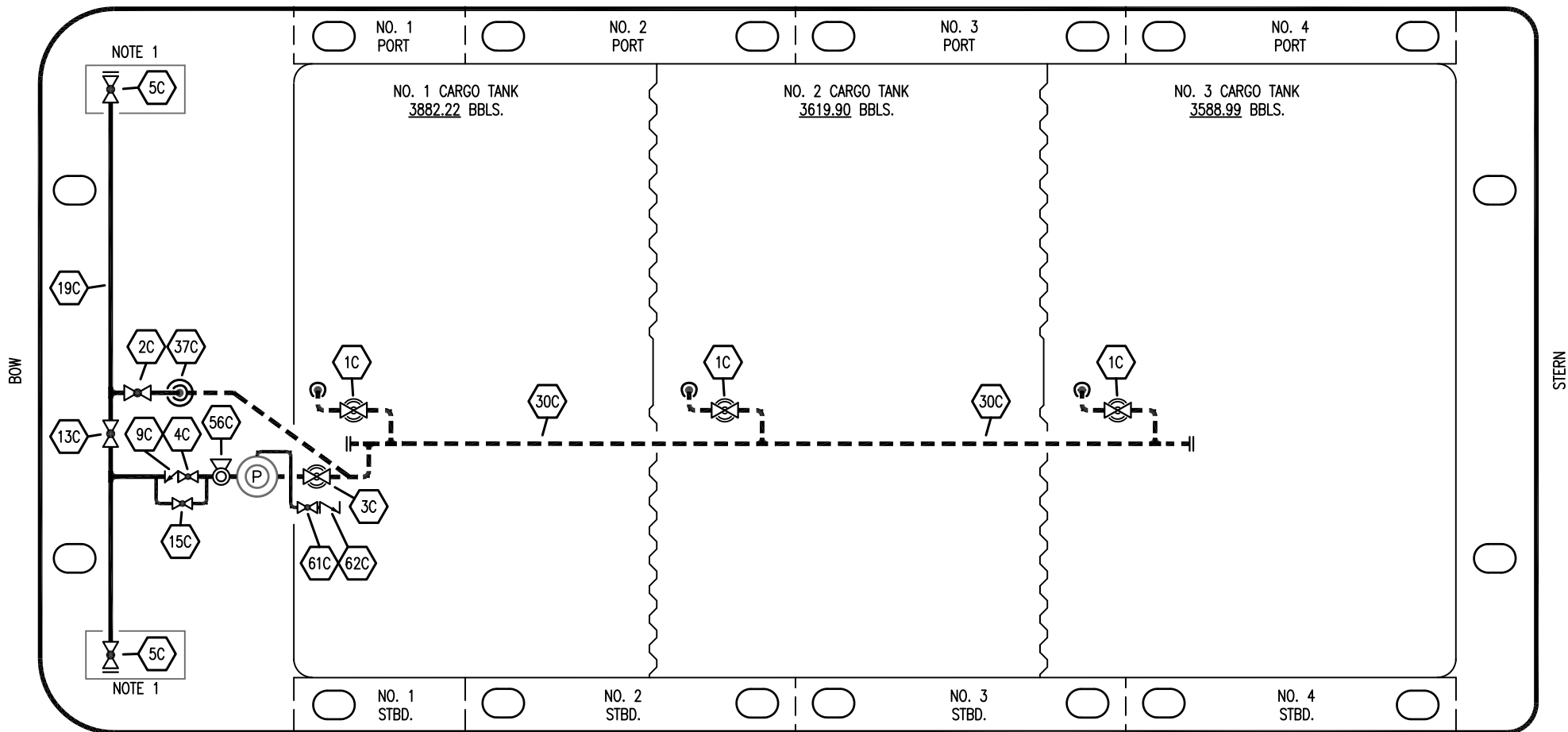


STARBOARD



- |           |                      |           |                                   |
|-----------|----------------------|-----------|-----------------------------------|
| <b>NO</b> | <b>DESCRIPTION</b>   | <b>NO</b> | <b>DESCRIPTION</b>                |
| 1C        | CARGO TANK VALVE     | 12C       | BURP VALVE RETURN TO CARGO TANK   |
| 2C        | LOAD VALVE           | 13C       | CARGO HEADER BLOCK VALVE          |
| 3C        | MASTER SUCTION VALVE | 15C       | BYPASS VALVE (AROUND CHECK VALVE) |
| 4C        | DISCHARGE VALVE      | 19C       | CARGO HEADER                      |
| 5C        | HEADER VALVE         | 30C       | CARGO PIPELINE                    |
| 8C        | RELIEF VALVE         | 37C       | CARGO DROP                        |
| 9C        | CHECK VALVE          | 56C       | PRESSURE RELIEF VALVE             |
| 10C       | BURP VALVE           | 61C       | PUMPWELL VENT VALVE               |
| 11C       | BLEED OFF VALVE      | 62C       | PUMPWELL VENT CHECK VALVE         |
|           |                      | —         | ABOVE DECK PIPING                 |
|           |                      | - - -     | BELOW DECK PIPING                 |

NOTE 1: CONTAINMENT P/S

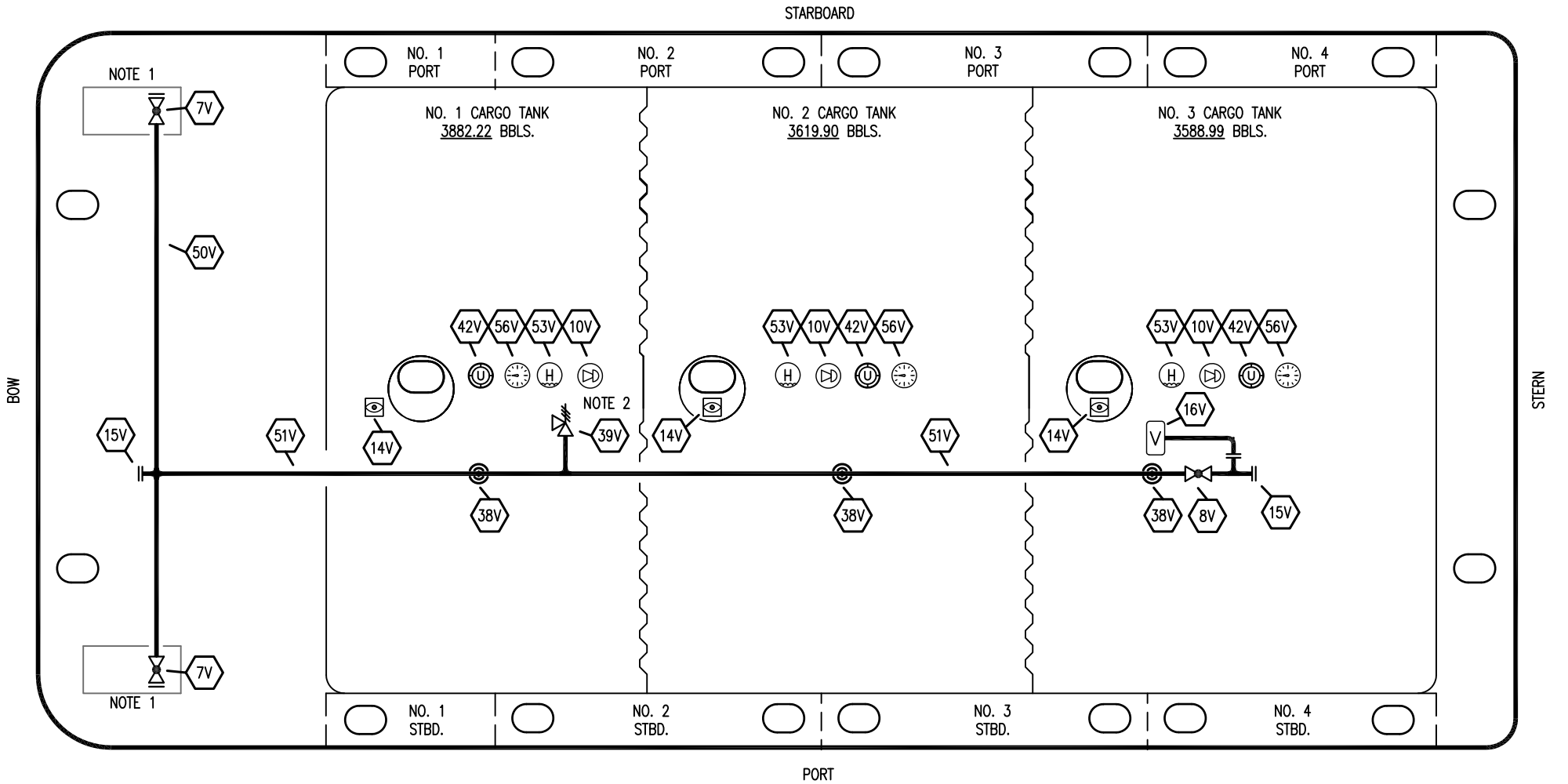
0	01/09/24	MRV	DDA	WHI	ISSUED FOR APPROVAL	
REV.	DATE	BY	CHK	APP	REVISION DESCRIPTION	

EX. FMT 1042

**KIRBY INLAND MARINE**

**CARGO  
PIPING FLOW DIAGRAM**

SCALE: NONE	<b>KIRBY 11367</b>	REV. 0
PAGE: 1 OF 3		



- |     |                           |     |                       |
|-----|---------------------------|-----|-----------------------|
| NO  | DESCRIPTION               | NO  | DESCRIPTION           |
| 7V  | HEADER VALVE              | 39V | PRESSURE/VACUUM VALVE |
| 8V  | VENT STACK VALVE          | 42V | ULLAGE HATCH          |
| 10V | HIGH LEVEL/OVERFILL ALARM | 50V | VAPOR HEADER          |
| 14V | SIGHT GLASS W/ GAUGE TREE | 51V | VAPOR PIPELINE        |
| 15V | INSPECTION PORT           | 53V | ONE METER STICK GAUGE |
| 16V | VAPOR VENT STACK          | 56V | GAUGE POINT           |
| 38V | VAPOR PENETRATION         | —   | ABOVE DECK PIPING     |

NOTE 2: P/V VALVE SETTINGS: 3-PSI PRESSURE; 1-PSI VACUUM  
NOTE 1: CONTAINMENT P/S

EX. FMT 1042

0	01/06/24	MRV	DDA	WHI	ISSUED FOR APPROVAL
REV.	DATE	BY	CHK	APP	REVISION DESCRIPTION

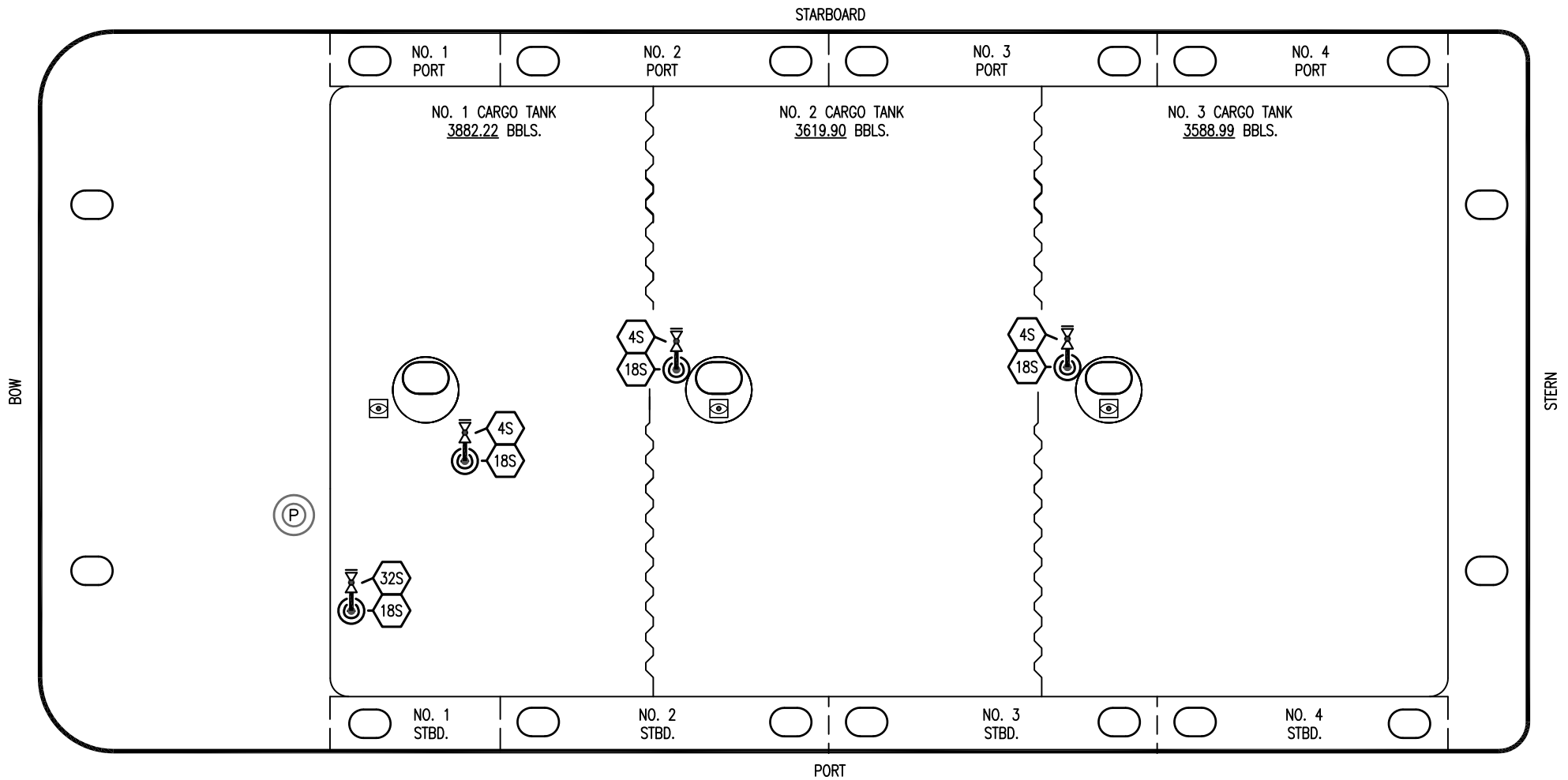
**KIRBY INLAND MARINE**


**VAPOR  
PIPING FLOW DIAGRAM**

**KIRBY 11367**

SCALE: NONE  
PAGE: 2 OF 3

REV. **0**




- | NO  | DESCRIPTION  |
|-----|--|
| 4S  | CARGO TANK SUCTION VALVE   |
| 18S | STRIPPING DROP  |
| 32S | PUMP WELL STRIPPING VALVE  |
| —   | ABOVE DECK PIPING  |

NOTE 1: CONTAINMENT P/S

EX. FMT 1042

0	01/09/24	MRV	DDA	WHI	ISSUED FOR APPROVAL
REV.	DATE	BY	CHK	APP	REVISION DESCRIPTION

<b>KIRBY INLAND MARINE</b> 	
<b>STRIPPING PIPING FLOW DIAGRAM</b>	
SCALE: NONE	<b>KIRBY 11367</b>
PAGE: 3 OF 3	REV. <b>0</b>