


- |           |                                 |           |  |
|-----------|---------------------------------|-----------|--|
| <b>NO</b> | <b>DESCRIPTION</b>              | <b>NO</b> | <b>DESCRIPTION</b>   |
| 1C        | CARGO TANK VALVE                | 15C       | BYPASS VALVE (AROUND CHECK VALVE)  |
| 2C        | LOAD VALVE                      | 19C       | CARGO HEADER   |
| 3C        | MASTER SUCTION VALVE            | 30C       | CARGO PIPELINE   |
| 4C        | DISCHARGE VALVE                 | 37C       | CARGO DROP  |
| 5C        | HEADER VALVE                    | 56C       | PRESSURE RELIEF VALVE  |
| 8C        | RELIEF VALVE                    | 61C       | PUMPWELL VENT VALVE  |
| 9C        | CHECK VALVE                     | 62C       | PUMPWELL VENT CHECK VALVE  |
| 10C       | BURP VALVE                      | —         | — ABOVE DECK PIPING  |
| 11C       | BLEED OFF VALVE                 | - - -     | - - - BELOW DECK PIPING  |
| 12C       | BURP VALVE RETURN TO CARGO TANK |           |  |
| 13C       | CARGO PIPING BLOCK VALVE        |           |  |

NOTE 1: CONTAINMENT P/S

EX. FMT 1010

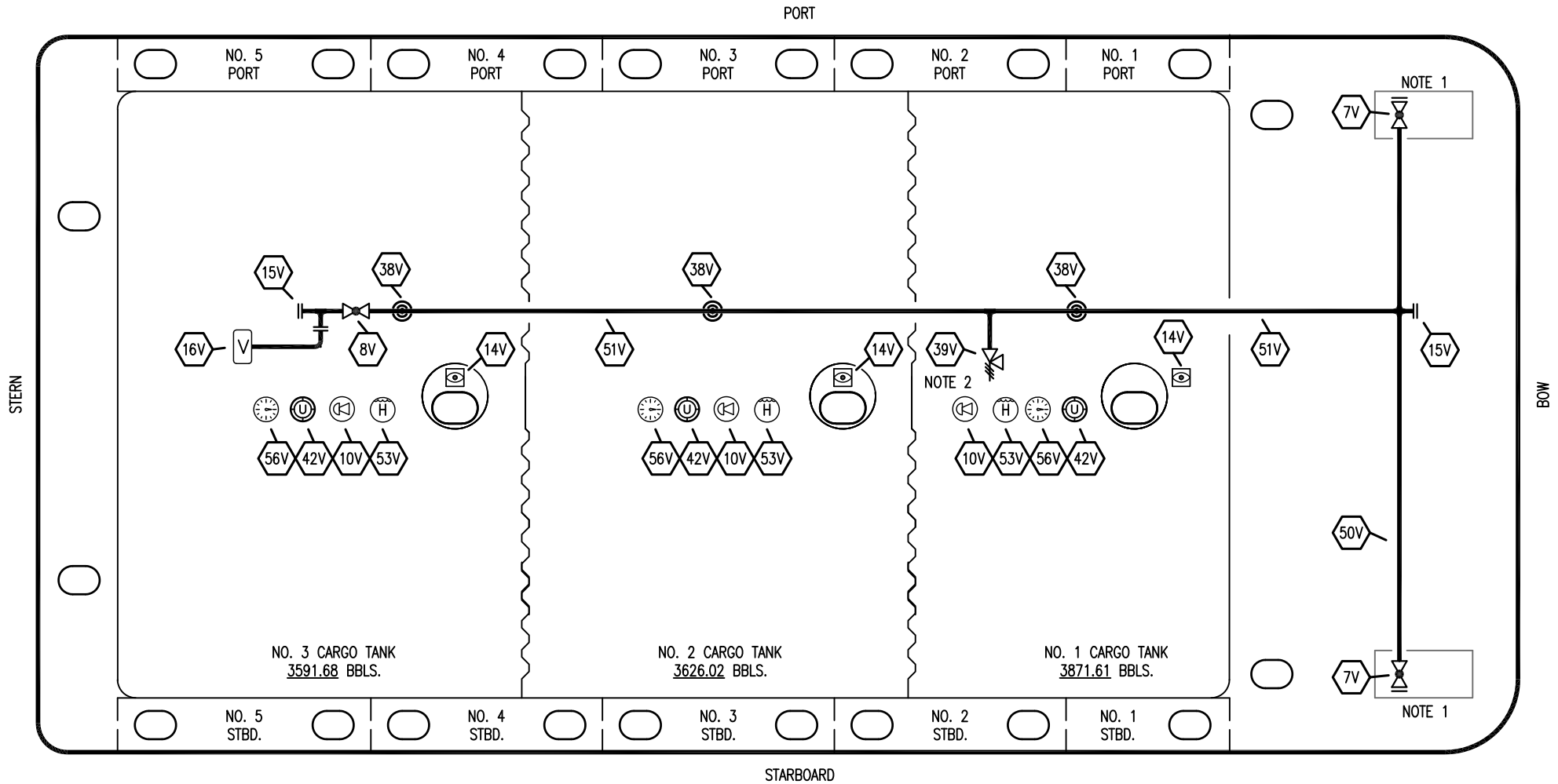
0	01/17/24	MRV	DDA	TFB	ISSUED FOR APPROVAL	
REV.	DATE	BY	CHK	APP	REVISION DESCRIPTION	

**KIRBY INLAND MARINE** 

**CARGO  
PIPING FLOW DIAGRAM**

SCALE: NONE  
PAGE: 1 OF 3

**KIRBY 11362** REV. **0**



NO	DESCRIPTION	NO	DESCRIPTION
7V	HEADER VALVE	39V	PRESSURE/VACUUM VALVE
8V	VENT STACK VALVE	42V	ULLAGE HATCH
10V	HIGH LEVEL/OVERFILL ALARM	50V	VAPOR HEADER
14V	SIGHT GLASS W/ GAUGE TREE	51V	VAPOR PIPELINE
15V	INSPECTION PORT	53V	HIGH LEVEL GAUGE
16V	VAPOR VENT STACK	56V	GAUGE POINT
38V	VAPOR PENETRATION	—	ABOVE DECK PIPING

NOTE 2: P/V VALVE SETTINGS: 3 PSI PRESSURE; 1 PSI VACUUM

NOTE 1: CONTAINMENT P/S

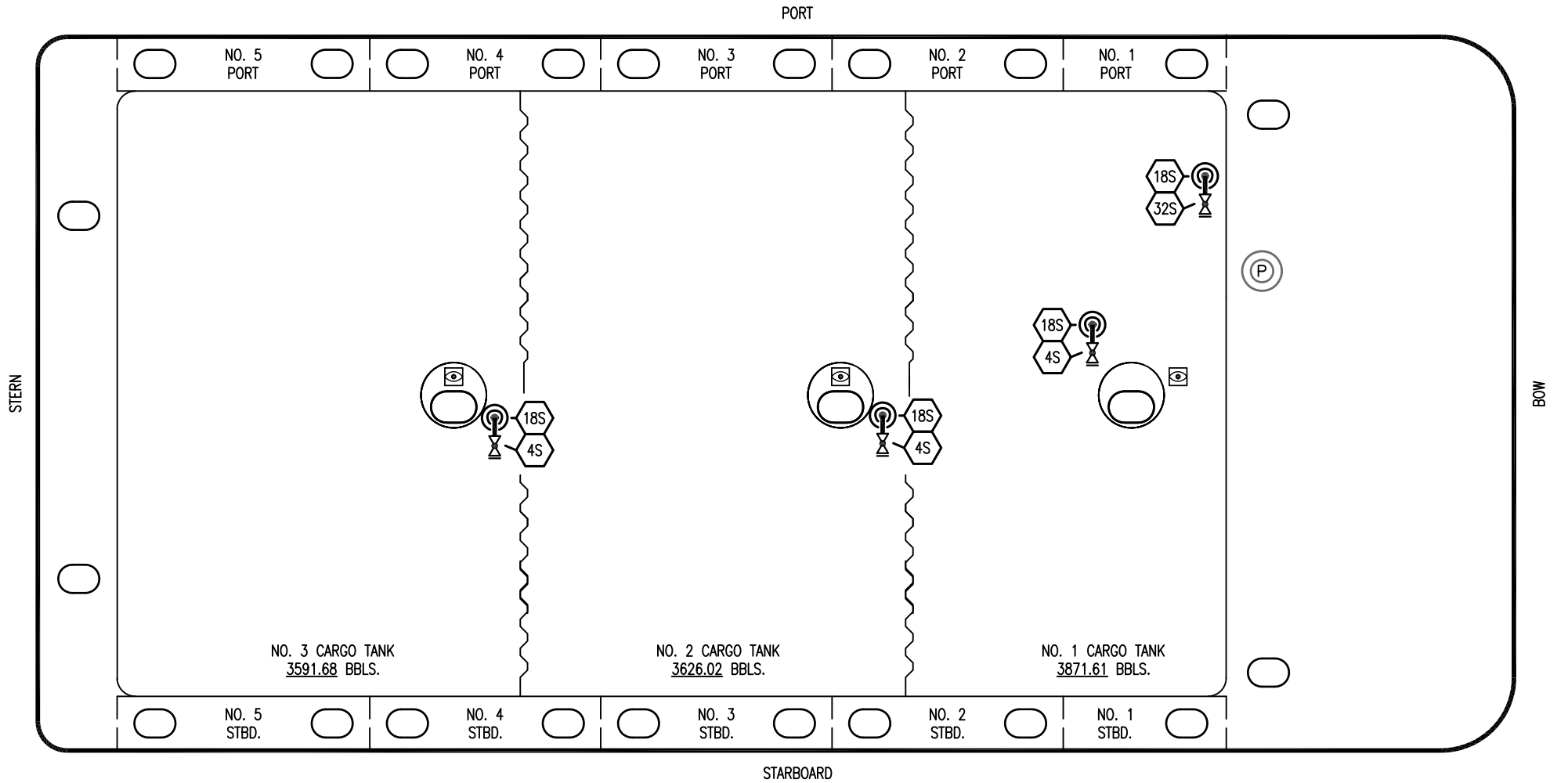
EX. FMT 1010

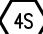
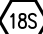

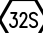
0	01/17/24	MRV	DDA	TFB	ISSUED FOR APPROVAL	SCALE: NONE
REV.	DATE	BY	CHK	APP	REVISION DESCRIPTION	PAGE: 2 OF 3

**KIRBY INLAND MARINE** 


**VAPOR  
PIPING FLOW DIAGRAM**

**KIRBY 11362** REV. **0**



- | NO  | DESCRIPTION  |
|---|--|
|  | CARGO TANK SUCTION VALVE   |
|  | STRIPPING DROP  |
|  | PUMP WELL STRIPPING VALVE  |

EX. FMT 1010

						<b>KIRBY INLAND MARINE</b> 	
						<b>STRIPPING PIPING FLOW DIAGRAM</b>	
0	01/17/24	MRV	DDA	TFB	ISSUED FOR APPROVAL	SCALE: NONE	<b>KIRBY 11362</b>
REV.	DATE	BY	CHK	APP	REVISION DESCRIPTION	PAGE: 3 OF 3	
						REV. <b>0</b>	