



- | | | | |
|-----|----------------------|-----|--|
| NO | DESCRIPTION | NO | DESCRIPTION |
| 1C | CARGO TANK VALVE | 12C | BURP VALVE RETURN TO CARGO TANK |
| 2C | LOAD VALVE | 15C | BYPASS VALVE (AROUND CHECK VALVE) |
| 3C | MASTER SUCTION VALVE | 19C | CARGO HEADER |
| 4C | DISCHARGE VALVE | 30C | CARGO PIPELINE |
| 5C | HEADER VALVE | 37C | CARGO DROP  |
| 8C | RELIEF VALVE | 56C | PRESSURE RELIEF VALVE |
| 9C | CHECK VALVE | 61C | PUMPWELL VENT VALVE |
| 10C | BURP VALVE | 62C | PUMPWELL VENT CHECK VALVE |
| 11C | BLEED OFF VALVE | | |

— ABOVE DECK PIPING
 - - - BELOW DECK PIPING

NOTE 1: CONTAINMENT P/S

EX. FMT 1000

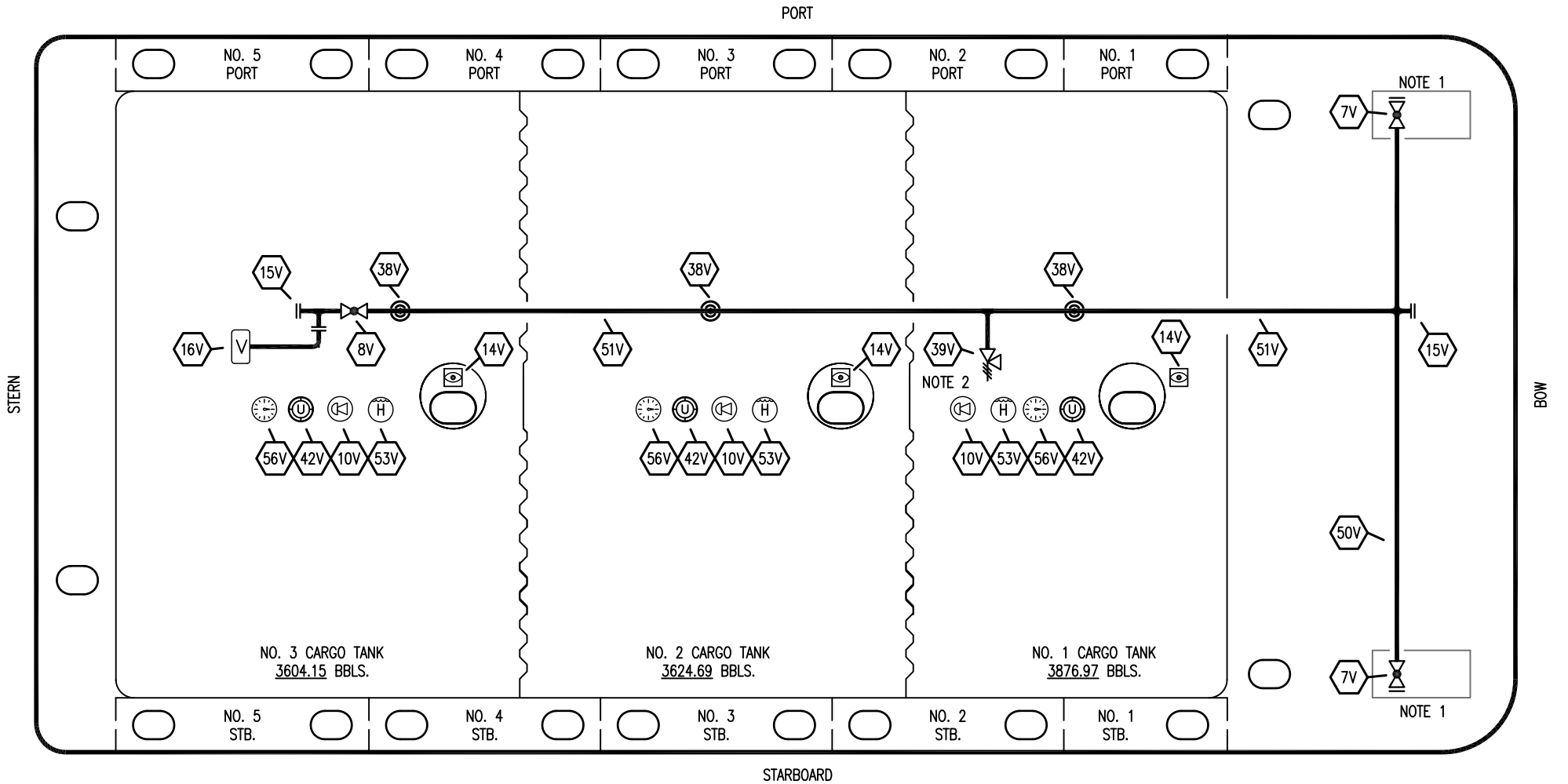
0	09/16/23	MRV	DDA	WHI	ISSUED FOR APPROVAL
REV.	DATE	BY	CHK	APP	REVISION DESCRIPTION

KIRBY INLAND MARINE 

**CARGO
PIPING FLOW DIAGRAM**

KIRBY 11360

SCALE: NONE	REV. 0
PAGE: 1 OF 3	



NO. 3 CARGO TANK
3604.15 BBLS.

NO. 2 CARGO TANK
3624.69 BBLS.

NO. 1 CARGO TANK
3876.97 BBLS.

NO	DESCRIPTION	NO	DESCRIPTION
7V	8" HEADER VALVE	39V	6" PRESSURE/VACUUM VALVE
8V	8" VENT STACK VALVE	42V	ULLAGE HATCH
10V	HIGH LEVEL/OVERFILL ALARM	50V	8" VAPOR HEADER
14V	SIGHT GLASS W/ GAUGE TREE	51V	8" VAPOR PIPELINE
15V	INSPECTION PORT	53V	HIGH LEVEL GAUGE
16V	8" VAPOR VENT STACK	56V	GAUGE POINT
38V	8" VAPOR PENETRATION	—	—

— ABOVE DECK PIPING

NOTE 1: CONTAINMENT P & S

NOTE 2: P/V VALVE SETTINGS:
3 PSI PRESSURE
1 PSI VACUUM

EX. FMT 1000

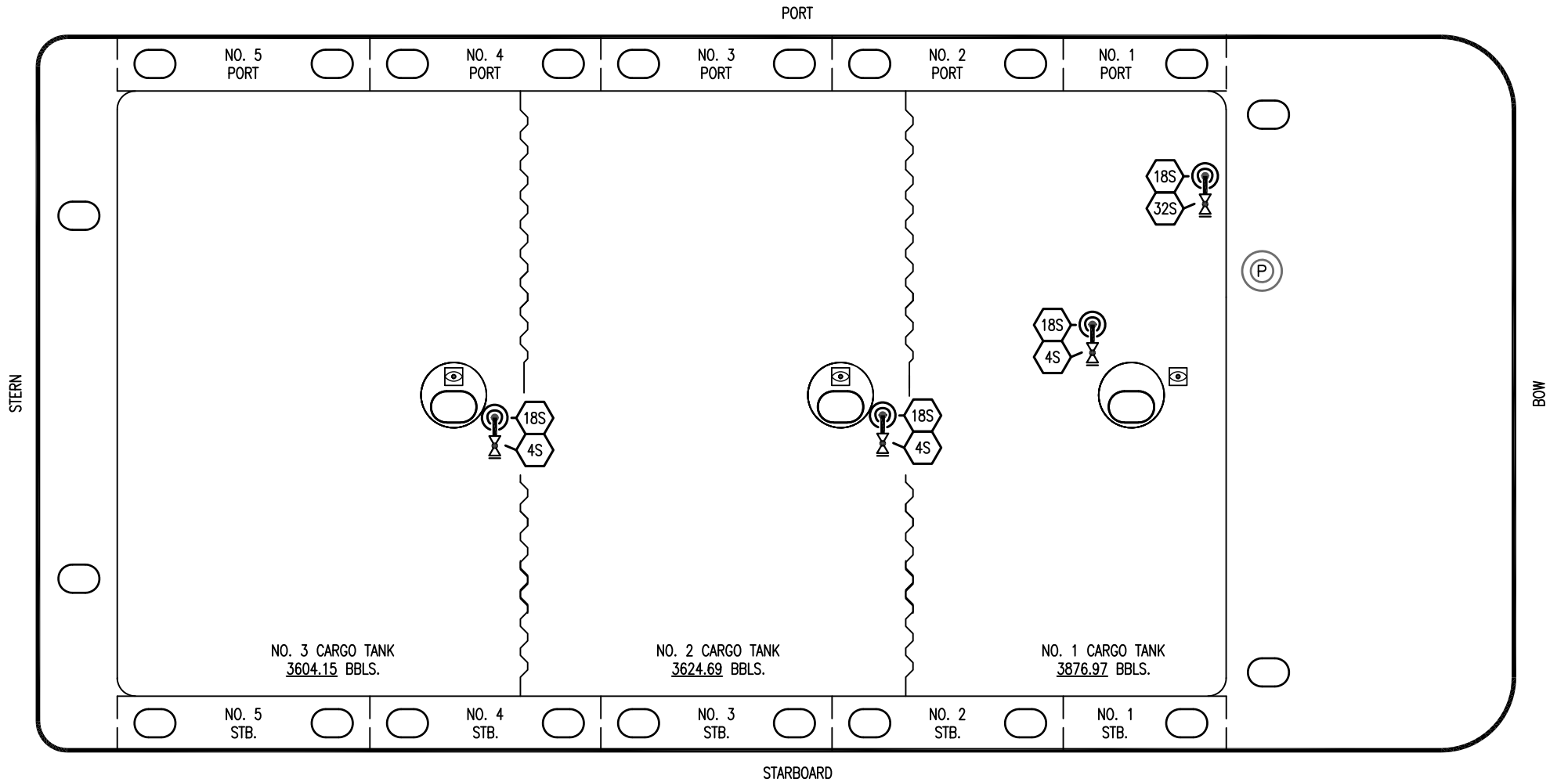
0	09/16/23	MRV	DDA	WHI	ISSUED FOR APPROVAL
REV.	DATE	BY	CHK	APP	REVISION DESCRIPTION

KIRBY INLAND MARINE 

**VAPOR
PIPING FLOW DIAGRAM**

SCALE: NONE
PAGE: 2 OF 3

KIRBY 11360 REV. **0**



- | NO | DESCRIPTION |
|-----|---------------------------|
| 4S | CARGO TANK SUCTION VALVE |
| 18S | STRIPPING DROP |
| 32S | PUMP WELL STRIPPING VALVE |

EX. FMT 1000

						KIRBY INLAND MARINE	
						STRIPPING PIPING FLOW DIAGRAM	
0	09/16/23	MRV	DDA	WHI	ISSUED FOR APPROVAL	SCALE: NONE	KIRBY 11360
REV.	DATE	BY	CHK	APP	REVISION DESCRIPTION	PAGE: 3 OF 3	
						REV. 0	