




NO	DESCRIPTION	NO	DESCRIPTION
1C	CARGO TANK VALVE	12C	BURP VALVE RETURN TO CARGO TANK
2C	LOAD VALVE	15C	BYPASS VALVE (AROUND CHECK VALVE)
3C	MASTER SUCTION VALVE	19C	CARGO HEADER
4C	DISCHARGE VALVE	30C	CARGO PIPELINE
5C	HEADER VALVE	37C	CARGO DROP 
8C	RELIEF VALVE	56C	PRESSURE RELIEF VALVE
9C	CHECK VALVE	61C	PUMPWELL VENT VALVE
10C	BURP VALVE	62C	PUMPWELL VENT CHECK VALVE
11C	BLEED OFF VALVE		
	 ABOVE DECK PIPING		
	 BELOW DECK PIPING		

NOTE 1: CONTAINMENT P/S

EX. FMT 1006

0	09/19/23	MRV	DDA	WHI	ISSUED FOR APPROVAL
REV.	DATE	BY	CHK	APP	REVISION DESCRIPTION

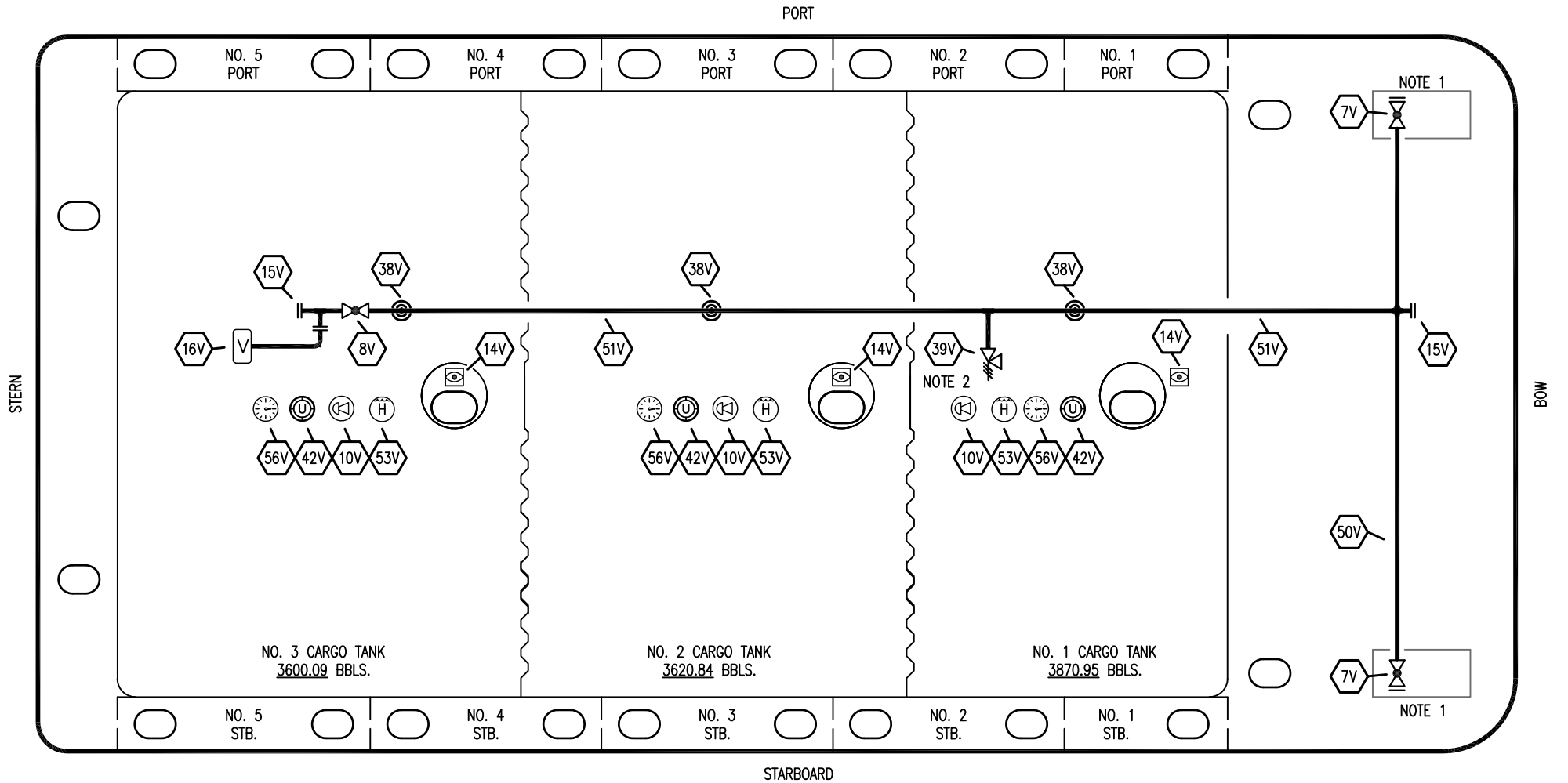
KIRBY INLAND MARINE 

**CARGO
PIPING FLOW DIAGRAM**

SCALE: NONE
PAGE: 1 OF 3

KIRBY 11357

REV. **0**



- | | | | |
|-----|---------------------------|-----|--------------------------|
| NO | DESCRIPTION | NO | DESCRIPTION |
| 7V | 8" HEADER VALVE | 39V | 6" PRESSURE/VACUUM VALVE |
| 8V | 8" VENT STACK VALVE | 42V | ULLAGE HATCH |
| 10V | HIGH LEVEL/OVERFILL ALARM | 50V | 8" VAPOR HEADER |
| 14V | SIGHT GLASS W/ GAUGE TREE | 51V | 8" VAPOR PIPELINE |
| 15V | INSPECTION PORT | 53V | HIGH LEVEL GAUGE |
| 16V | 8" VAPOR VENT STACK | 56V | GAUGE POINT |
| 38V | 8" VAPOR PENETRATION | — | — |
- ABOVE DECK PIPING

NOTE 1: CONTAINMENT P & S

NOTE 2: P/V VALVE SETTINGS:
3 PSI PRESSURE
1 PSI VACUUM

EX. FMT 1006

0	09/19/23	MRV	DDA	WHI	ISSUED FOR APPROVAL
REV.	DATE	BY	CHK	APP	REVISION DESCRIPTION

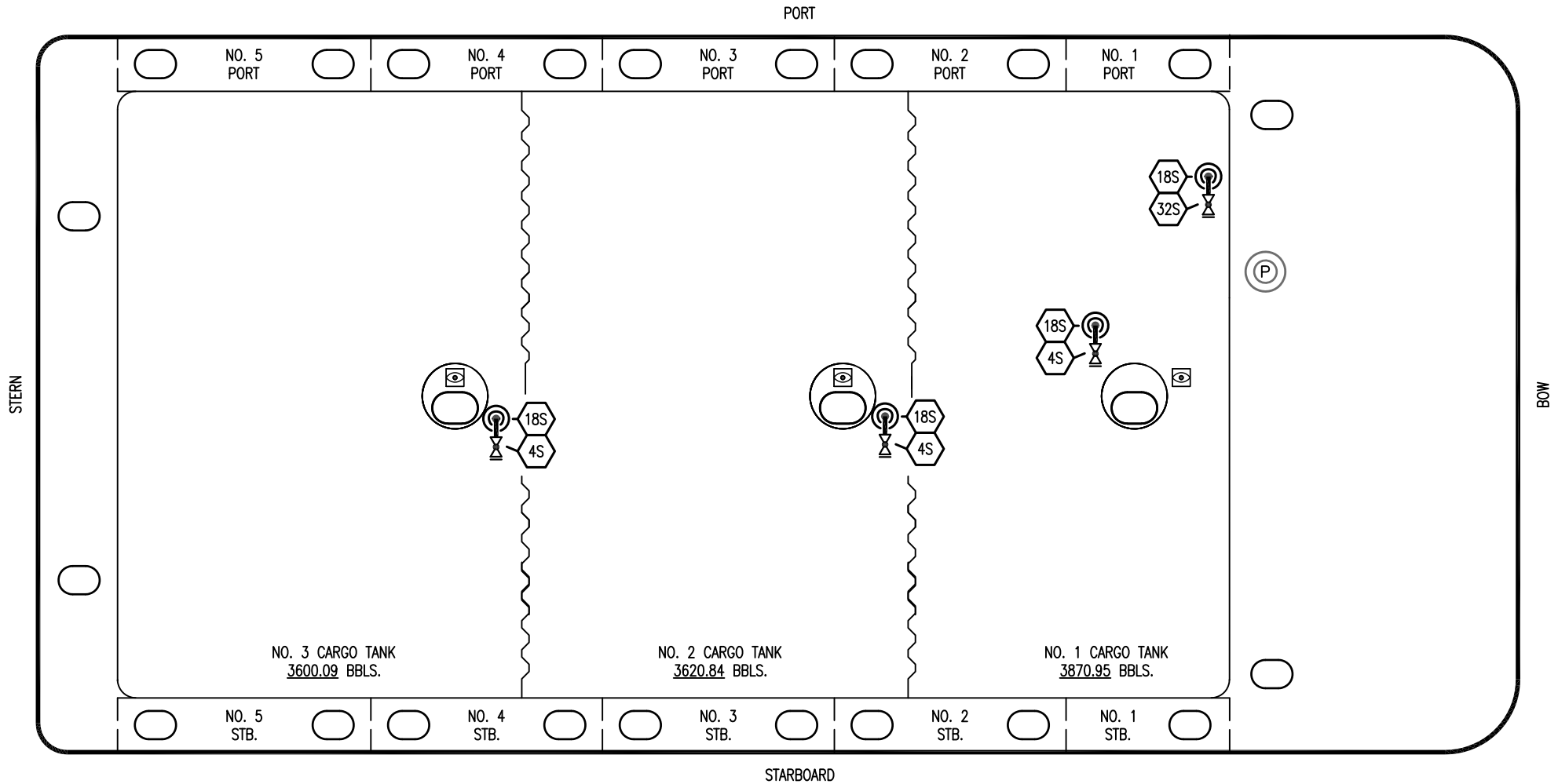
KIRBY INLAND MARINE 

**VAPOR
PIPING FLOW DIAGRAM**

SCALE: NONE
PAGE: 2 OF 3

KIRBY 11357

REV. **0**



- | NO | DESCRIPTION |
|-----|---------------------------|
| 4S | CARGO TANK SUCTION VALVE |
| 18S | STRIPPING DROP |
| 32S | PUMP WELL STRIPPING VALVE |

EX. FMT 1006

KIRBY INLAND MARINE								
STRIPPING PIPING FLOW DIAGRAM								
0	09/19/23	MRV	DDA	WHI	ISSUED FOR APPROVAL	SCALE: NONE	KIRBY 11357	REV.
REV.	DATE	BY	CHK	APP	REVISION DESCRIPTION	PAGE: 3 OF 3		0