

NO	SIZE	DESCRIPTION	NO	SIZE	DESCRIPTION
1C	8"	CARGO TANK VALVE	12C	1"	BURP VALVE RETURN TO CARGO TANK
2C	8"	LOAD VALVE	15C	2"	BYPASS VALVE (AROUND CHECK VALVE)
3C	10"	MASTER SUCTION VALVE	19C	8"	CARGO HEADER
4C	8"	DISCHARGE VALVE	24C		FLOW INDICATOR
5C	8"	HEADER VALVE	30C	10"	CARGO PIPELINE
6C	8"	SALVAGE VALVE	36C		PRESSURE GAUGE
8C	6"	RELIEF VALVE	37C		CARGO DROP
9C		CHECK VALVE			— ABOVE DECK PIPING
11C	1"	BLEED OFF VALVE			- - - BELOW DECK PIPING

NOTE 1: CONTAINMENT- PORT & STBD.

JEFFBOAT

**KIRBY INLAND MARINE**

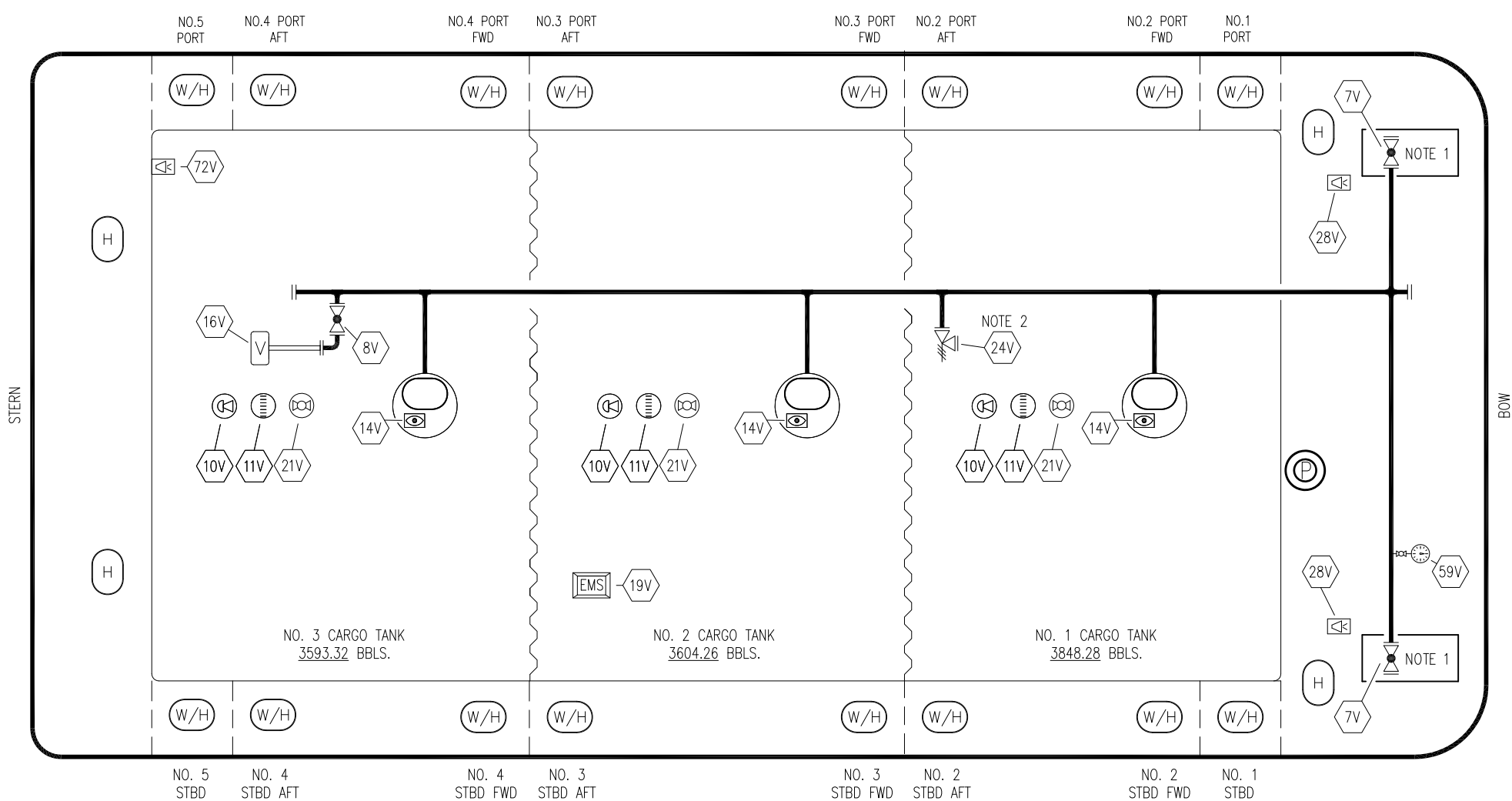
**CARGO**

**PIPING FLOW DIAGRAM**

**KIRBY 11315**

REV.	DATE	BY	CHK	APP	REVISION DESCRIPTION	SCALE: NONE	PAGE: 1 OF 3
1	08/11/20	MRV	DDA	CW	REVISED PER CLIENT COMMENTS		
0	01/19/09	RB	WK	OF	APPROVED		

**REV. 1**



NO	SIZE	DESCRIPTION	NO	SIZE	DESCRIPTION
7V	8"	HEADER VALVE	59V		PRESS/VAC GAUGE
8V	8"	VENT STACK VALVE	72V		SOLAR ALARM PANEL
10V		HIGH LEVEL/OVERFILL ALARM	—		ABOVE DECK PIPING
11V		GAUGE STICK			
14V		SIGHT GLASS			
16V		VAPOR VENT STACK			
21V	2"	HERMETIC GAUGE			
19V		EMERGENCY ENGINE SHUT DOWN			
24V	6"	PRESSURE RELIEF VALVE			
28V		HIGH LEVEL/OVERFILL ALARM DOCK CONNECTION			

NOTE 1: CONTAINMENT- PORT & STBD.

NOTE 2: P.V. SET @ 3 PSI PRESSURE AND .5 PSI VACUUM

JEFFBOAT

REV.	DATE	BY	CHK	APP	REVISION DESCRIPTION
1	08/11/20	MRV	DDA	CW	REVISED PER CLIENT COMMENTS
0	01/19/09	RB	WK	OF	APPROVED

KIRBY INLAND MARINE 

**VAPOR  
PIPING FLOW DIAGRAM**

SCALE: NONE

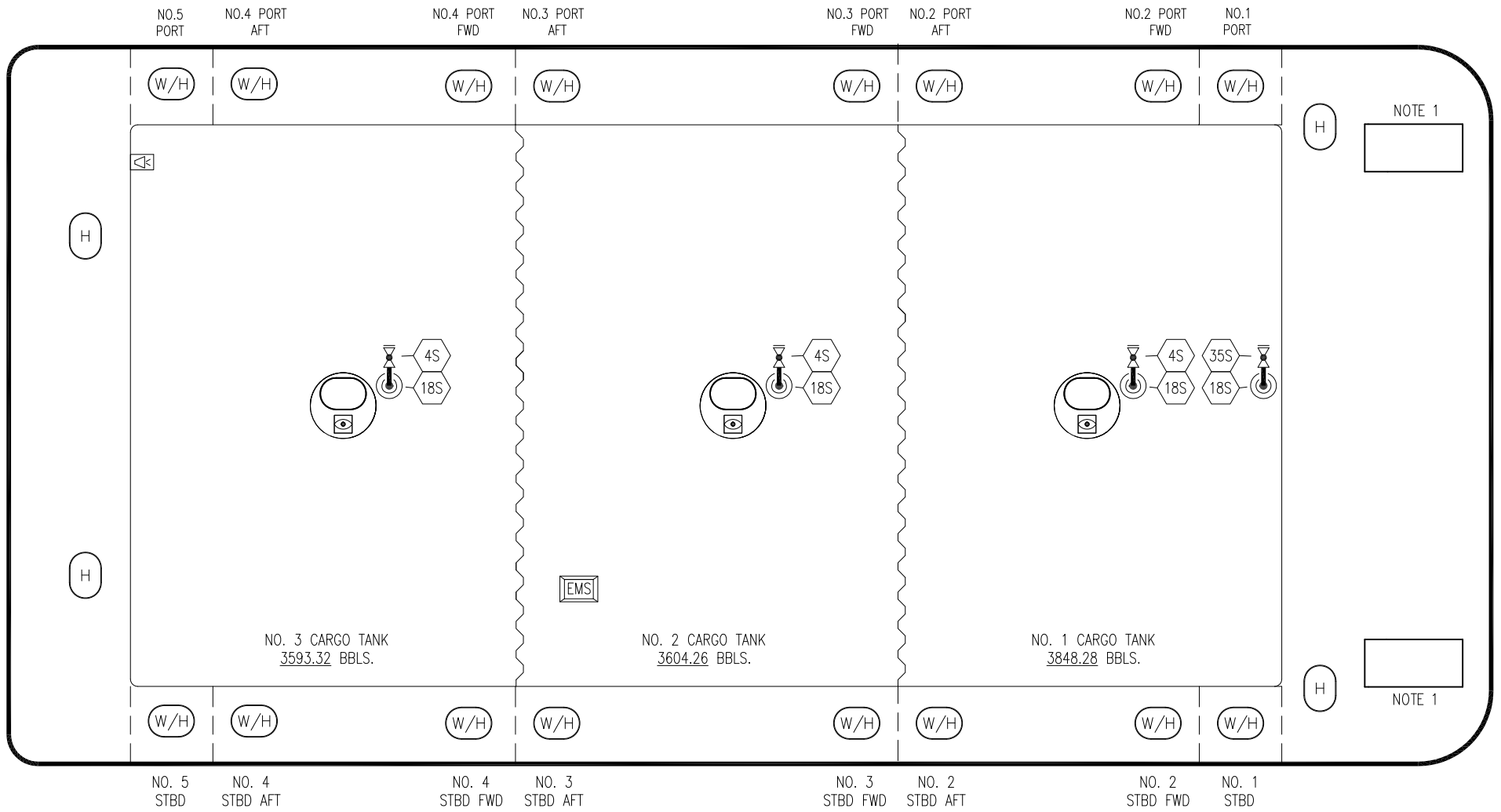
PAGE: 2 OF 3


**KIRBY 11315**

REV. **1**

STERN


BOW



NO	DESCRIPTION
4S	CARGO TANK SUCTION VALVE
11S	LOWER CARGO PIPELINE SUCTION VALVE
18S	STRIPPING DROP 
35S	STRIPPING VALVE

NOTE 1: CONTAINMENT- PORT & STBD.

JEFFBOAT

						<b>KIRBY INLAND MARINE</b> 	
						SCALE: NONE	
						<b>KIRBY 11315</b>	
0	08/11/20	MRV	DDA	CW	ISSUE FOR APPROVAL		REV. 0
REV.	DATE	BY	CHK	APP	REVISION	DESCRIPTION	PAGE: 3 OF 3