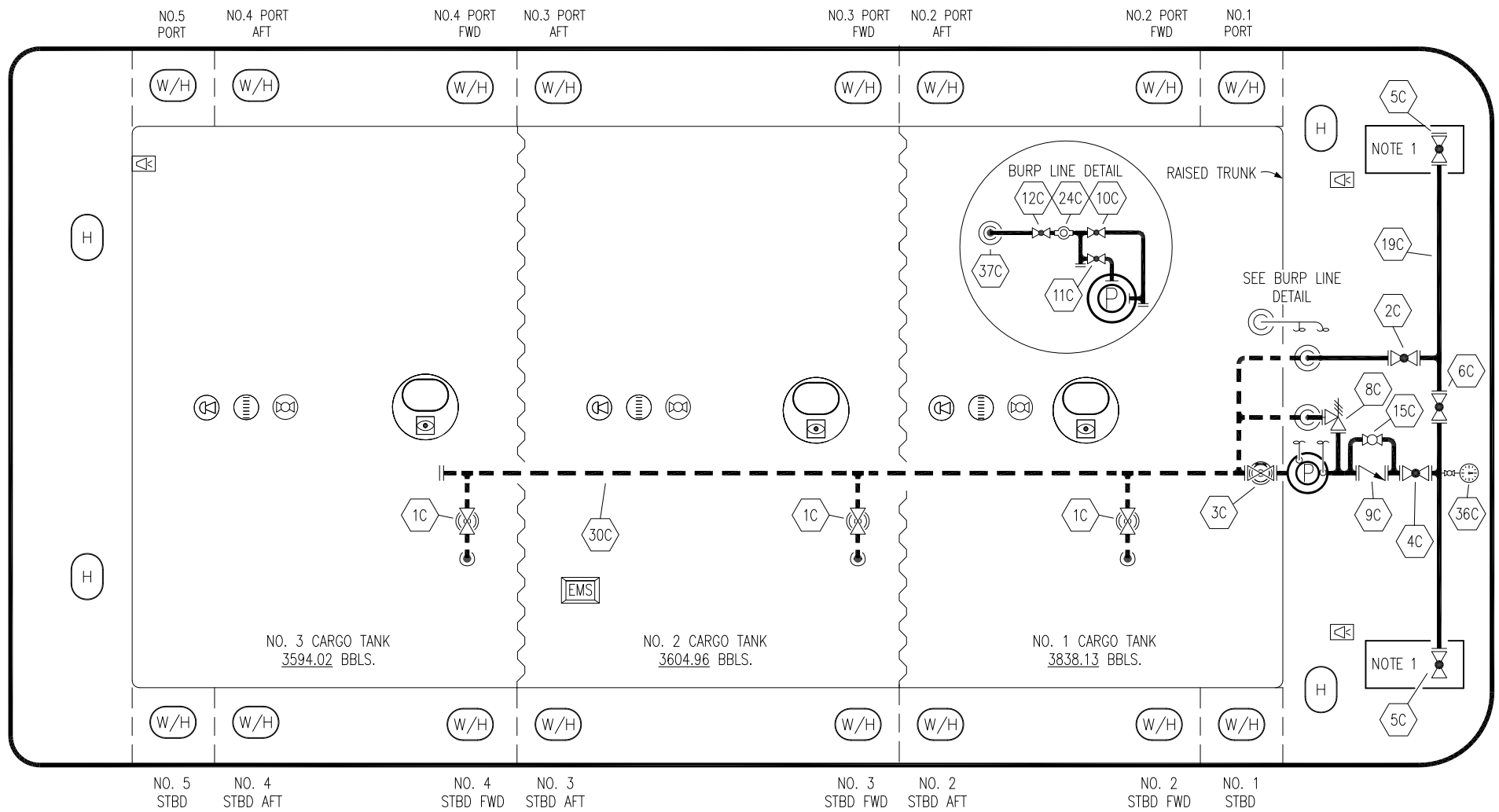


STERN

BOW



NO	SIZE	DESCRIPTION	NO	SIZE	DESCRIPTION
1C	8"	CARGO TANK VALVE	12C	1"	BURP VALVE RETURN TO CARGO TANK
2C	8"	LOAD VALVE	15C	2"	BYPASS VALVE (AROUND CHECK VALVE)
3C	10"	MASTER SUCTION VALVE	19C	8"	CARGO HEADER
4C	8"	DISCHARGE VALVE	24C		FLOW INDICATOR
5C	8"	HEADER VALVE	30C	10"	CARGO PIPELINE
6C	8"	SALVAGE VALVE	36C		PRESSURE GAUGE
8C	6"	RELIEF VALVE	37C		CARGO DROP
9C		CHECK VALVE			
11C	1"	BLEED OFF VALVE			
		ABOVE DECK PIPING			
		BELOW DECK PIPING			

NOTE 1: CONTAINMENT- PORT & STBD.

REV.	DATE	BY	CHK	APP	REVISION DESCRIPTION
1	11/16/20	MRV	DDA	CW	REVISED PER CLIENT COMMENTS
0	09/07/09	LT	TB	OF	APPROVED

JEFFBOAT

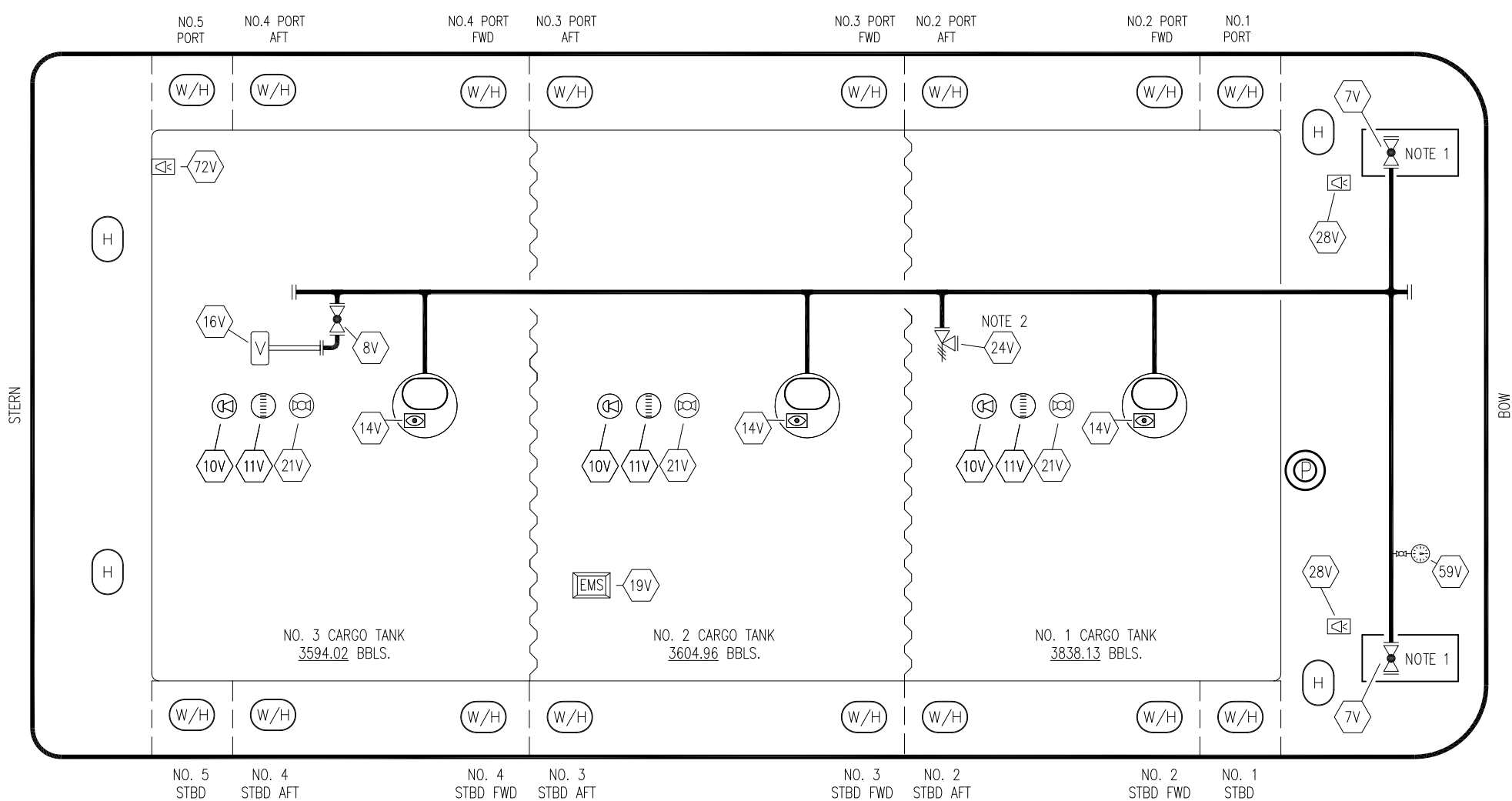
KIRBY INLAND MARINE

CARGO
PIPING FLOW DIAGRAM

KIRBY 11314

SCALE: NONE
PAGE: 1 OF 3

REV. **1**



NO	SIZE	DESCRIPTION	NO	SIZE	DESCRIPTION
7V	8"	HEADER VALVE	59V		PRESS/VAC GAUGE
8V	8"	VENT STACK VALVE	72V		SOLAR ALARM PANEL
10V		HIGH LEVEL/OVERFILL ALARM	—		ABOVE DECK PIPING
11V		GAUGE STICK			
14V		SIGHT GLASS			
16V		VAPOR VENT STACK			
21V	2"	HERMETIC GAUGE			
19V		EMERGENCY ENGINE SHUT DOWN			
24V	6"	PRESSURE RELIEF VALVE			
28V		HIGH LEVEL/OVERFILL ALARM DOCK CONNECTION			

NOTE 1: CONTAINMENT- PORT & STBD.
 NOTE 2: P.V. SET @ 3 PSI PRESSURE AND .5 PSI VACUUM

JEFFBOAT

KIRBY INLAND MARINE 

**VAPOR
 PIPING FLOW DIAGRAM**

REV.	DATE	BY	CHK	APP	REVISION DESCRIPTION
1	11/16/20	MRV	DDA	CW	REVISED PER CLIENT COMMENTS
0	09/07/09	LT	RB	OF	APPROVED

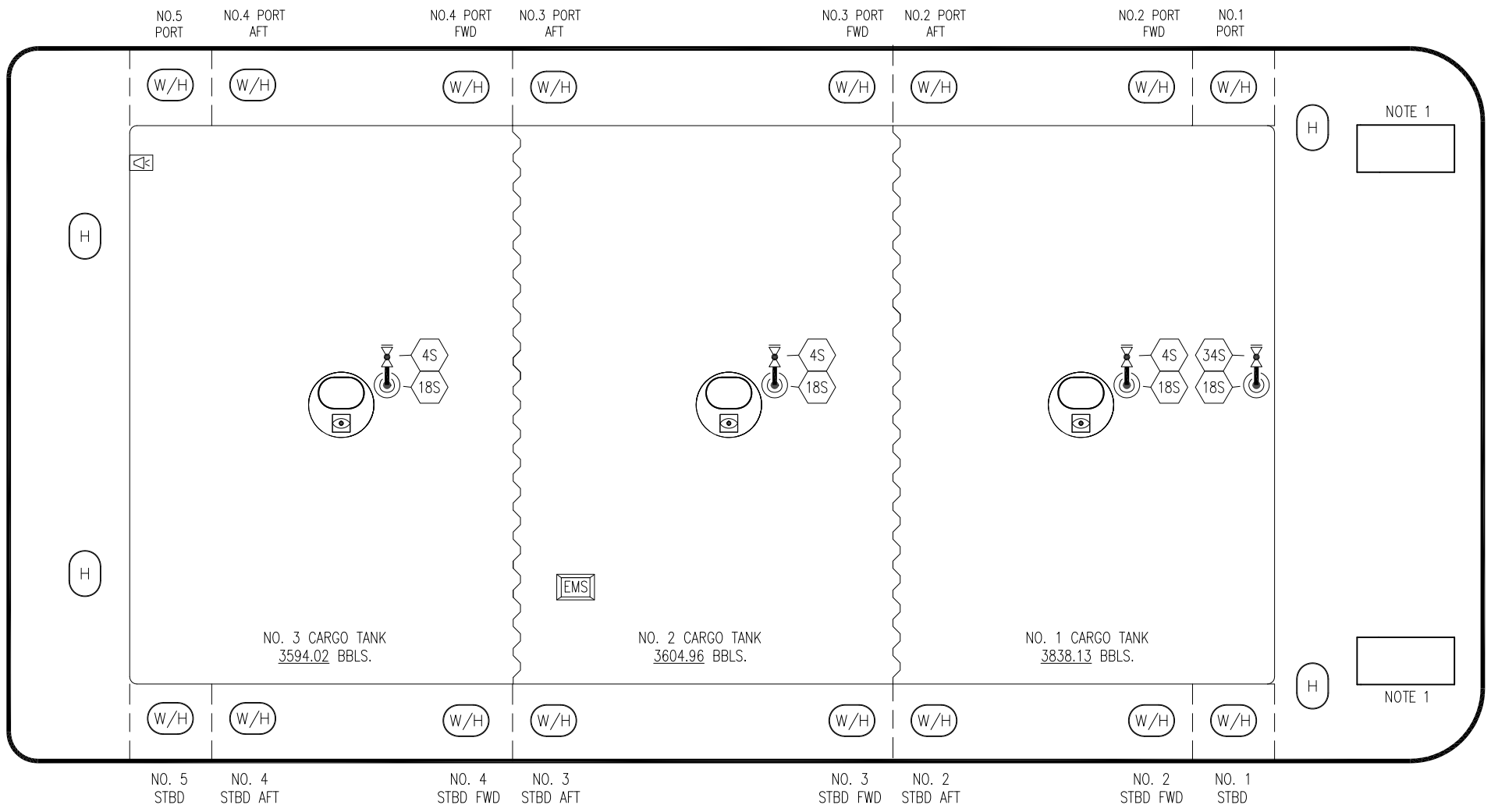
SCALE: NONE
 PAGE: 2 OF 3


KIRBY 11314

REV. **1**

STERN


BOW



NO	DESCRIPTION
4S	CARGO TANK SUCTION VALVE
11S	LOWER CARGO PIPELINE SUCTION VALVE
18S	STRIPPING DROP 
34S	DEEP WELL STRIPPING VALVE

NOTE 1: CONTAINMENT- PORT & STBD.

JEFFBOAT

						KIRBY INLAND MARINE 	
						STRIPPING PIPING FLOW DIAGRAM	
0	11/16/20	MRV	DDA	CW	ISSUE FOR APPROVAL	SCALE: NONE	KIRBY 11314
REV.	DATE	BY	CHK	APP	REVISION DESCRIPTION	PAGE: 3 OF 3	
						REV. 0	