

NOTE 1

RAISED TRUNK

RAISED TRUNK

NO. 1 CARGO TANK
4067 BBLs.

NO. 2 CARGO TANK
3903 BBLs.

NO. 3 CARGO TANK
3523 BBLs.

PUMP ENGINE

FUEL TANK

BURP LINE DETAIL

NOTE 1

STERN

BOW

STARBOARD

NO. 1 PORT

NO. 2 PORT

NO. 3 PORT

NO. 4 PORT

NO. 1 STB

NO. 2 STB

NO. 3 STB

NO. 4 STB

PORT

NO	DESCRIPTION	NO	DESCRIPTION
1B	BALLAST TANK VALVE	11C	1" BLEED OFF VALVE
1C	8" CARGO TANK VALVE	12C	1" BURP VALVE RETURN TO CARGO TANK
2C	8" LOAD VALVE	16C	DISCHARGE PRESSURE GAUGE
3C	10" MASTER SUCTION VALVE	19C	8" CARGO HEADER
4C	8" DISCHARGE VALVE	24C	1" PIPE SIGHT GLASS
5C	8" HEADER VALVE	30C	10" CARGO PIPELINE
6C	8" SALVAGE VALVE	36C	PRESSURE GAUGE
8C	6" RELIEF VALVE	37C	CARGO DROP
9B	SEA CHEST VALVE		
			— ABOVE DECK PIPING

NOTE 1: CONTAINMENT P/S

TRINITY MARINE PRODUCTS - BARREL CAPACITY=11492

KIRBY INLAND MARINE 

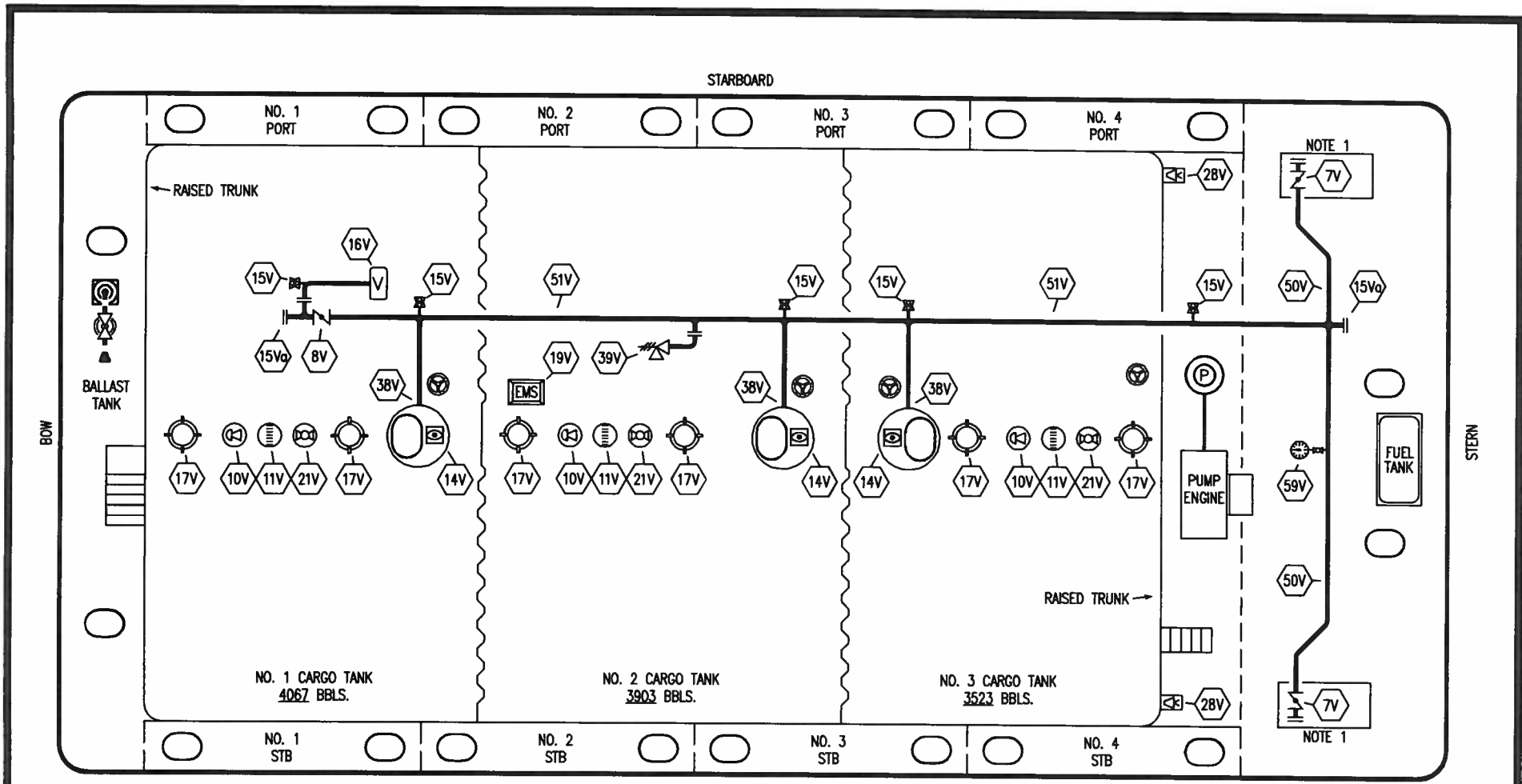
**CARGO
PIPING FLOW DIAGRAM**

REV.	DATE	BY	CHK	APP	REVISION DESCRIPTION
1	07/14/10	RB	RB	OF	ADD BALLAST TANK
0	01/07/10	RB	RB	RJ	FOR APPROVAL

SCALE: NONE
PAGE: 1 OF 3

KIRBY 11024B

REV. **1**



STARBOARD

NO. 1 PORT

NO. 2 PORT

NO. 3 PORT

NO. 4 PORT

NOTE 1

← RAISED TRUNK

BOW

BALLAST TANK

NO. 1 CARGO TANK
4067 BBLs.

NO. 2 CARGO TANK
3903 BBLs.

NO. 3 CARGO TANK
3523 BBLs.

PUMP ENGINE

FUEL TANK

STERN

RAISED TRUNK →

NO. 1 STB

NO. 2 STB

NO. 3 STB

NO. 4 STB

NOTE 1

PORT

NOTE 1: CONTAINMENT P/S

NO	DESCRIPTION	NO	DESCRIPTION
7V	8" HEADER VALVE	19V	EMERGENCY ENGINE SHUT DOWN
8V	8" VENT STACK VALVE	21V	HERMETIC GAUGE
10V	HIGH LEVEL/OVERFILL ALARM	28V	DOCK CONNECTION ALARM
11V	GAUGE STICK	39V	6" PRESSURE/VACUUM VALVE
14V	SIGHT GLASS W/GAUGE TREE	38V	8" VAPOR PENETRATION (C)
15V	2" INSPECTION PORT	50V	8" VAPOR HEADER
15Va	8" INSPECTION PORT	51V	8" VAPOR PIPELINE
16V	8" VAPOR VENT STACK	59V	PRESS/VAC GAUGE
17V	20" BUTTERWORTH		— ABOVE DECK PIPING

TRINITY MARINE PRODUCTS - BARREL CAPACITY=11492

KIRBY INLAND MARINE

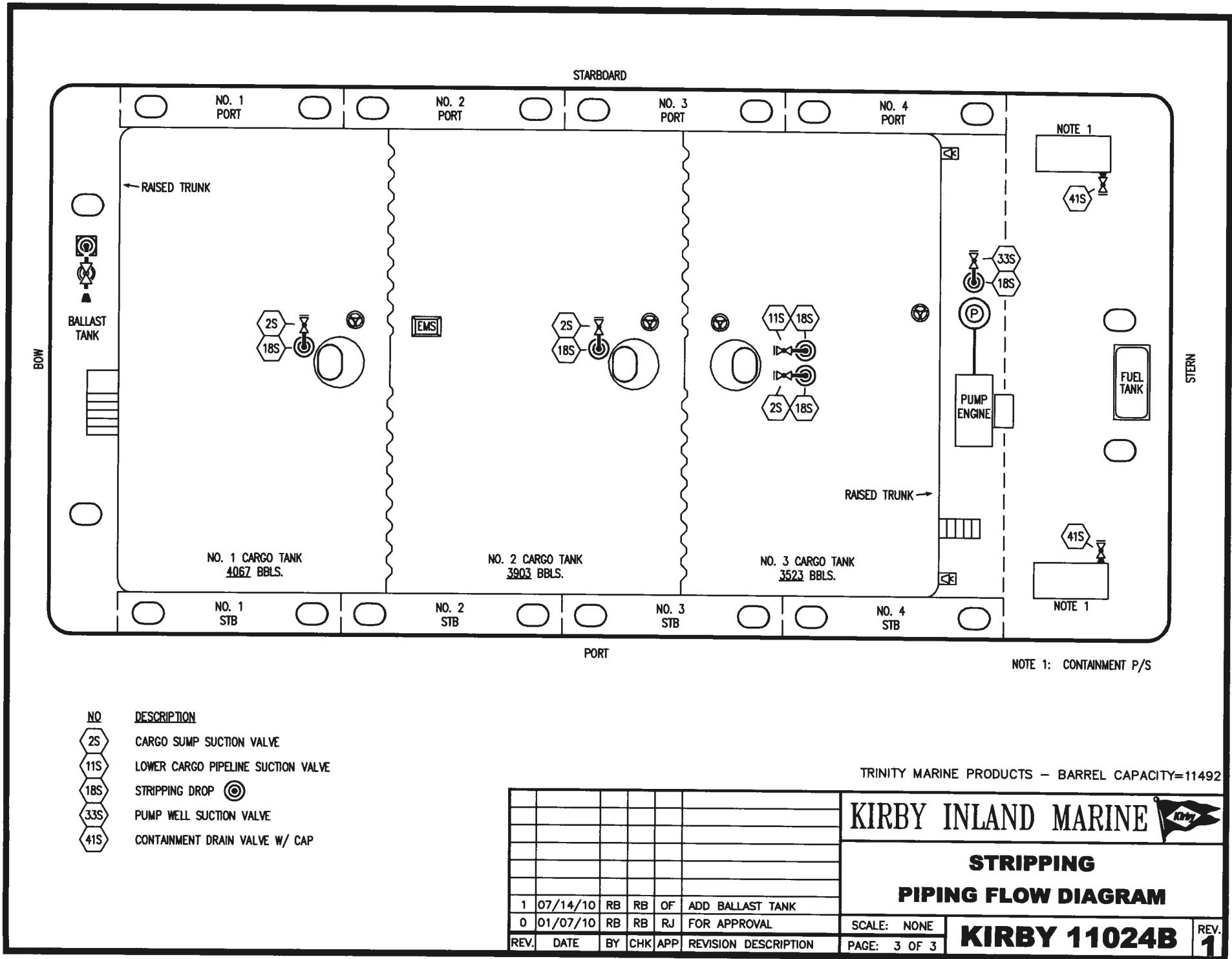
**VAPOR
PIPING FLOW DIAGRAM**

1	07/14/10	RB	RB	OF	ADD BALLAST TANK
0	01/07/10	RB	RB	RJ	FOR APPROVAL
REV.	DATE	BY	CHK	APP	REVISION DESCRIPTION


SCALE: NONE
PAGE: 2 OF 3

KIRBY 11024B


REV. 1



NOTE 1: CONTAINMENT P/S

- | | |
|-----|--|
| NO | DESCRIPTION |
| 2S | CARGO SUMP SUCTION VALVE |
| 11S | LOWER CARGO PIPELINE SUCTION VALVE |
| 18S | STRIPPING DROP  |
| 33S | PUMP WELL SUCTION VALVE |
| 41S | CONTAINMENT DRAIN VALVE W/ CAP |

TRINITY MARINE PRODUCTS - BARREL CAPACITY=11492

						KIRBY INLAND MARINE 	
1	07/14/10	RB	RB	OF	ADD BALLAST TANK	SCALE: NONE	KIRBY 11024B
0	01/07/10	RB	RB	RJ	FOR APPROVAL		
REV.	DATE	BY	CHK	APP	REVISION DESCRIPTION	PAGE: 3 OF 3	REV. 1