

NOTE 1: CONTAINMENT P/S

NO	DESCRIPTION	NO	DESCRIPTION
1C	8" CARGO TANK VALVE	12C	1" BURP VALVE RETURN TO CARGO TANK
2C	8" LOAD VALVE	16C	DISCHARGE PRESSURE GAUGE
3C	10" MASTER SUCTION VALVE	19C	8" CARGO HEADER
4C	8" DISCHARGE VALVE	24C	1" PIPE SIGHT GLASS
5C	8" HEADER VALVE	30C	10" CARGO PIPELINE
6C	8" SALVAGE VALVE	31C	BYPASS VALVE
8C	6" RELIEF VALVE	36C	PRESSURE GAUGE
9B	SEA CHEST VALVE	37C	CARGO DROOP
9C	8" CHECK VALVE	---	ABOVE DECK PIPING
11C	1" BLEED OFF VALVE	---	BELOW DECK PIPING

TRINITY MARINE PRODUCTS - BARREL CAPACITY=11492

**KIRBY INLAND MARINE**

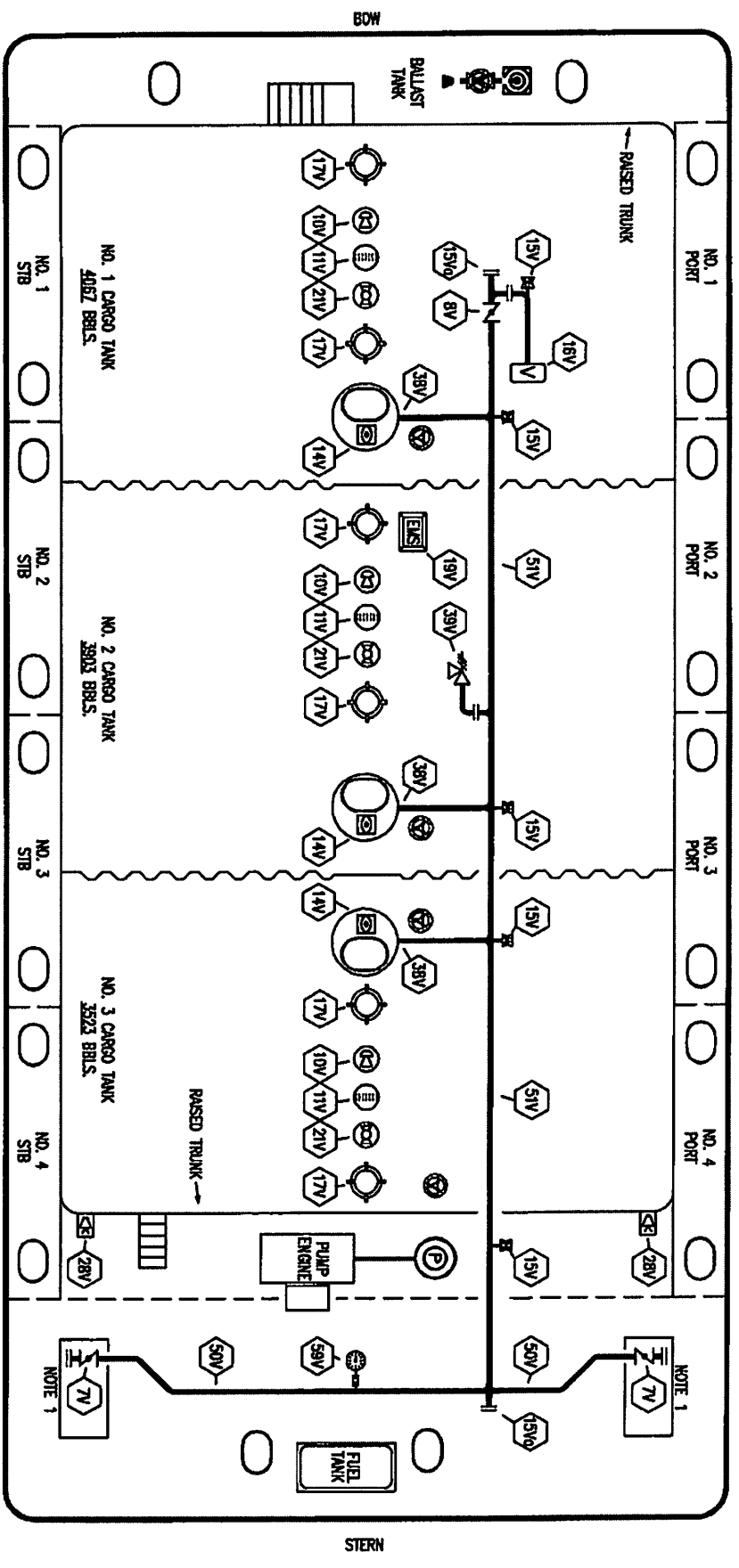
**CARGO**

**PIPING FLOW DIAGRAM**

REV.	DATE	BY	CHK	APP	REVISION DESCRIPTION
2	04/21/15	BB	BB		RAISED PER CLIENT COMMENTS
1	07/14/10	RB	RB	OF	ADD BALLAST TANK
0	01/07/10	RB	RB	RJ	FOR APPROVAL

SCALE: NONE  
PAGE: 1 OF 3  
**KIRBY 11011B**

REV. 2



- |         |                           |         |                            |
|---------|---------------------------|---------|----------------------------|
| NO. 7V  | 8" HEADER VALVE           | NO. 19V | EMERGENCY ENGINE SHUT DOWN |
| NO. 8V  | 8" VENT STACK VALVE       | NO. 21V | HERMETIC GAUGE             |
| NO. 10V | HIGH LEVEL/OVERBILL ALARM | NO. 28V | DOCK CONNECTION ALARM      |
| NO. 11V | GAUGE STICK               | NO. 38V | 8" VAPOR PENETRATION       |
| NO. 14V | SIGHT GLASS W/GAUGE TREE  | NO. 39V | 8" VAPOR HEADER            |
| NO. 15V | 2" INSPECTION PORT        | NO. 50V | 8" VAPOR PIPELINE          |
| NO. 15V | 8" INSPECTION PORT        | NO. 51V | PRESS./VAC GAUGE           |
| NO. 16V | 8" VAPOR VENT STACK       | NO. 59V | ABOVE DECK PIPING          |
| NO. 17V | 20" BUTTERWORTH           |         |                            |

NOTE 1: CONTAINMENT P/S

TRINITY MARINE PRODUCTS - BARREL CAPACITY=11492

**KIRBY INLAND MARINE**

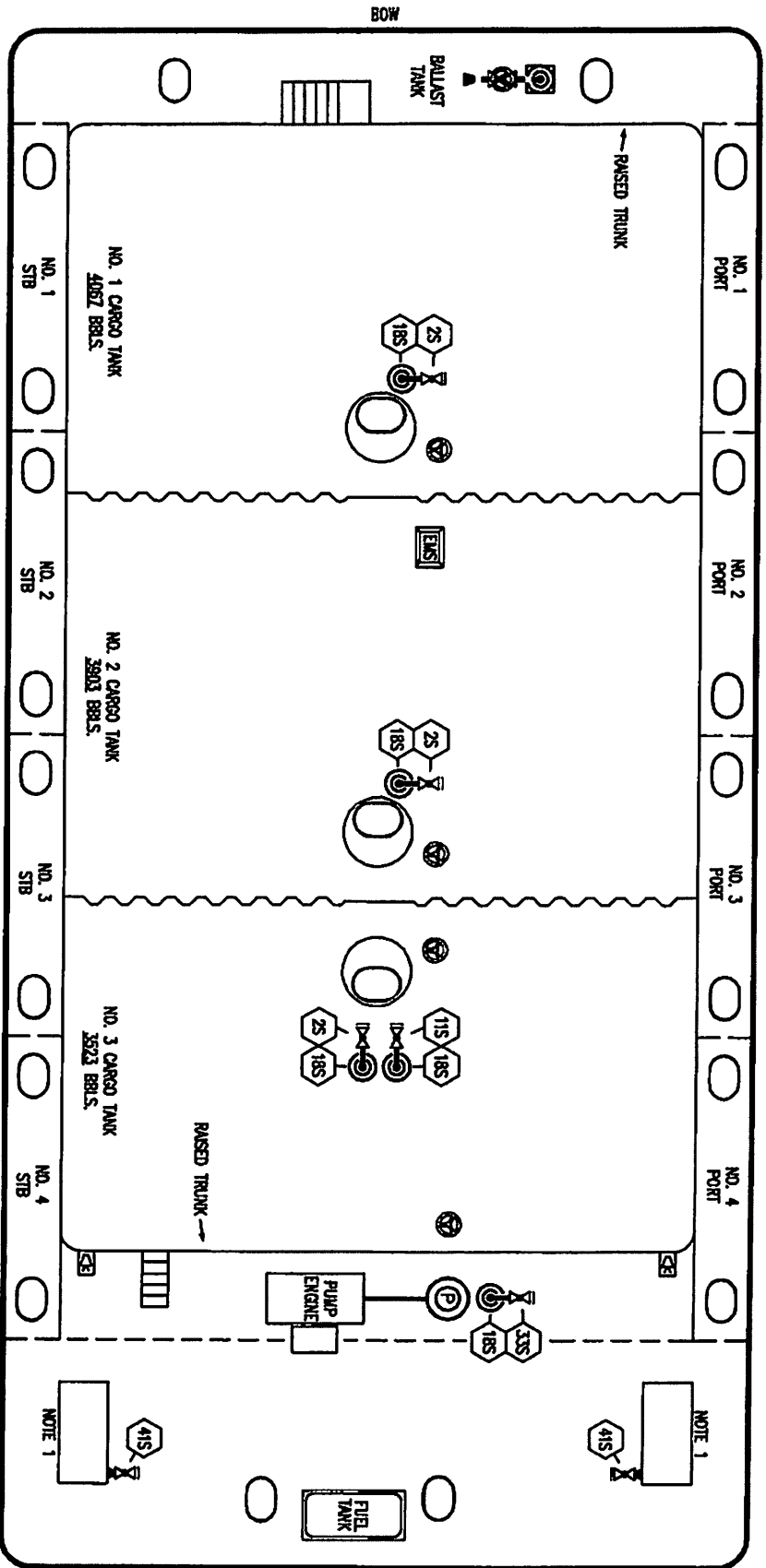
**VAPOR**

**PIPING FLOW DIAGRAM**

REV.	DATE	BY	CHK	APP	REVISION DESCRIPTION
1	07/14/10	RB	RB	OF	ADD BALLAST TANK
0	01/07/10	RB	RB	RJ	FOR APPROVAL

SCALE: NONE  
PAGE: 2 OF 3  
**KIRBY 11011B**

REV. 1



NOTE 1: CONTAINMENT P/S

- | NO  | DESCRIPTION                        |
|-----|------------------------------------|
| 2S  | CARGO SHARP SUCTION VALVE          |
| 11S | LOWER CARGO PIPELINE SUCTION VALVE |
| 1B8 | STRIPPING DROP                     |
| 13S | PUMP WELL SUCTION VALVE            |
| 41S | CONTAINMENT DRAIN VALVE W/ CAP     |

TRINITY MARINE PRODUCTS - BARREL CAPACITY=11492

**KIRBY INLAND MARINE**

**STRIPPING**

**PIPING FLOW DIAGRAM**

REV.	DATE	BY	CHK	APP	REVISION DESCRIPTION
1	07/14/10	RB	RB	OF	ADD BALLAST TANK
0	01/07/10	RB	RB	RJ	FOR APPROVAL

SCALE: NONE  
PAGE: 3 OF 3  
**KIRBY 11011B**

REV. 1