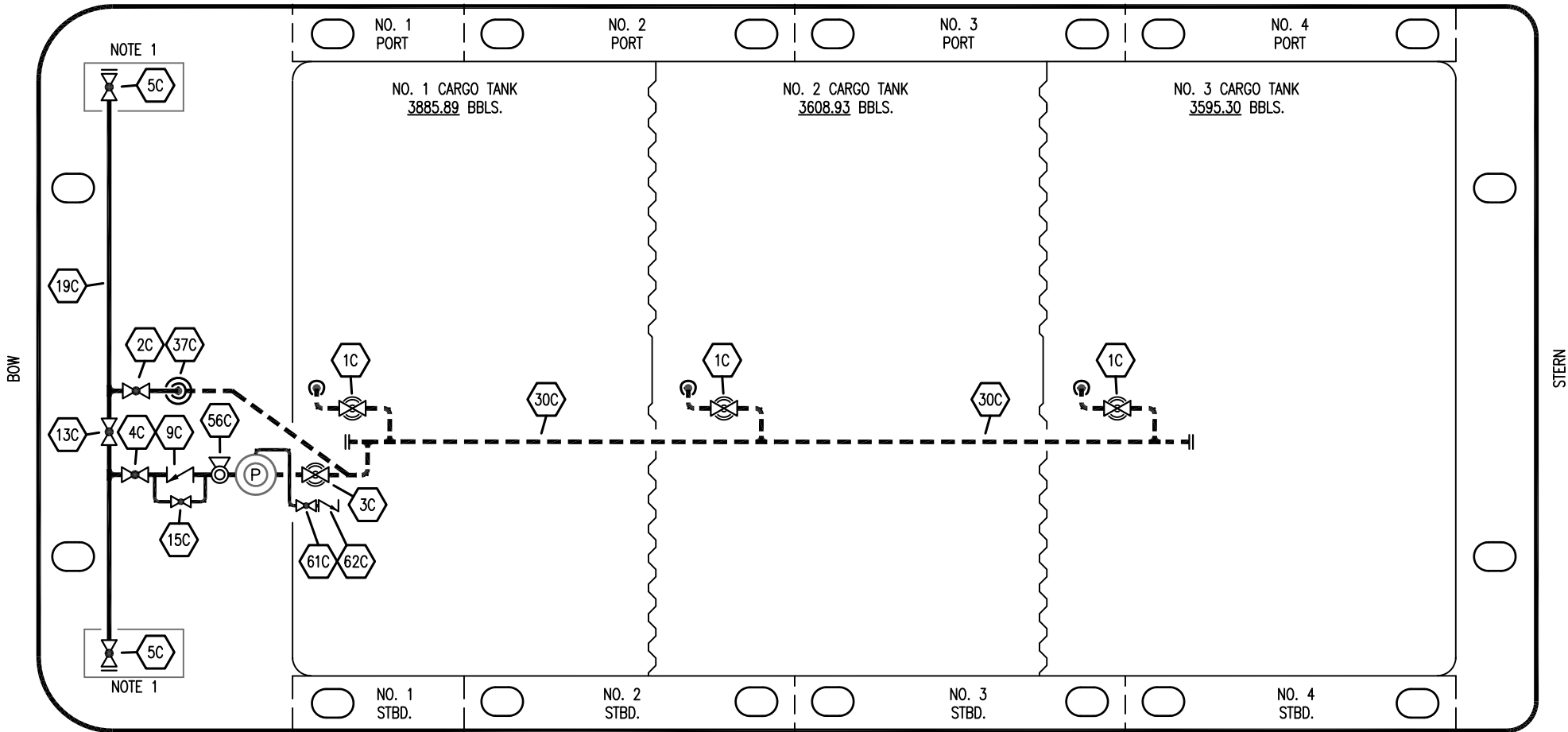


PORT



STARBOARD

NO	DESCRIPTION	NO	DESCRIPTION
1C	CARGO TANK VALVE	12C	BURP VALVE RETURN TO CARGO TANK
2C	LOAD VALVE	13C	CARGO HEADER BLOCK VALVE
3C	MASTER SUCTION VALVE	15C	BYPASS VALVE (AROUND CHECK VALVE)
4C	DISCHARGE VALVE	19C	CARGO HEADER
5C	HEADER VALVE	30C	CARGO PIPELINE
8C	RELIEF VALVE	37C	CARGO DROP
9C	CHECK VALVE	56C	PRESSURE RELIEF VALVE
10C	BURP VALVE	61C	PUMPWELL VENT VALVE
11C	BLEED OFF VALVE	62C	PUMPWELL VENT CHECK VALVE

— ABOVE DECK PIPING
 - - - BELOW DECK PIPING

NOTE 1: CONTAINMENT P/S

REV.	DATE	BY	CHK	APP	REVISION DESCRIPTION
0	12/12/23	MRV	DDA	DL	ISSUED FOR APPROVAL

KIRBY INLAND MARINE 

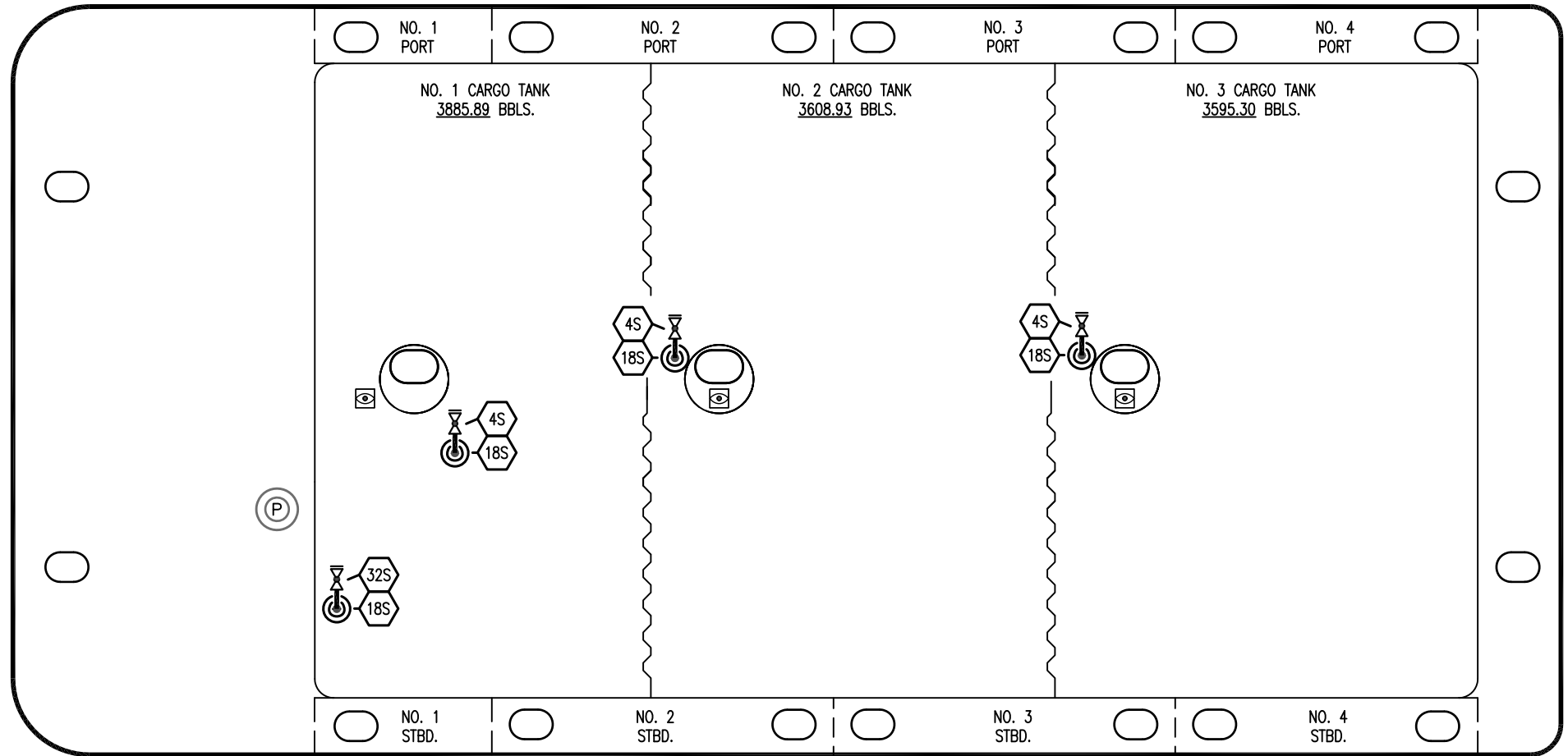
**CARGO
 PIPING FLOW DIAGRAM**

EX. FMT 1088

STARBOARD

BOW

STERN



PORT

- | NO | DESCRIPTION |
|----|---------------------------|
| | CARGO TANK SUCTION VALVE |
| | STRIPPING DROP |
| | PUMP WELL STRIPPING VALVE |
| | ABOVE DECK PIPING |

NOTE 1: CONTAINMENT P/S

EX. FMT 1088

0	12/12/23	MRV	DDA	DL	ISSUED FOR APPROVAL
REV.	DATE	BY	CHK	APP	REVISION DESCRIPTION

KIRBY INLAND MARINE

**STRIPPING
PIPING FLOW DIAGRAM**

SCALE: NONE
PAGE: 3 OF 3

KIRBY 11007

REV. **0**