


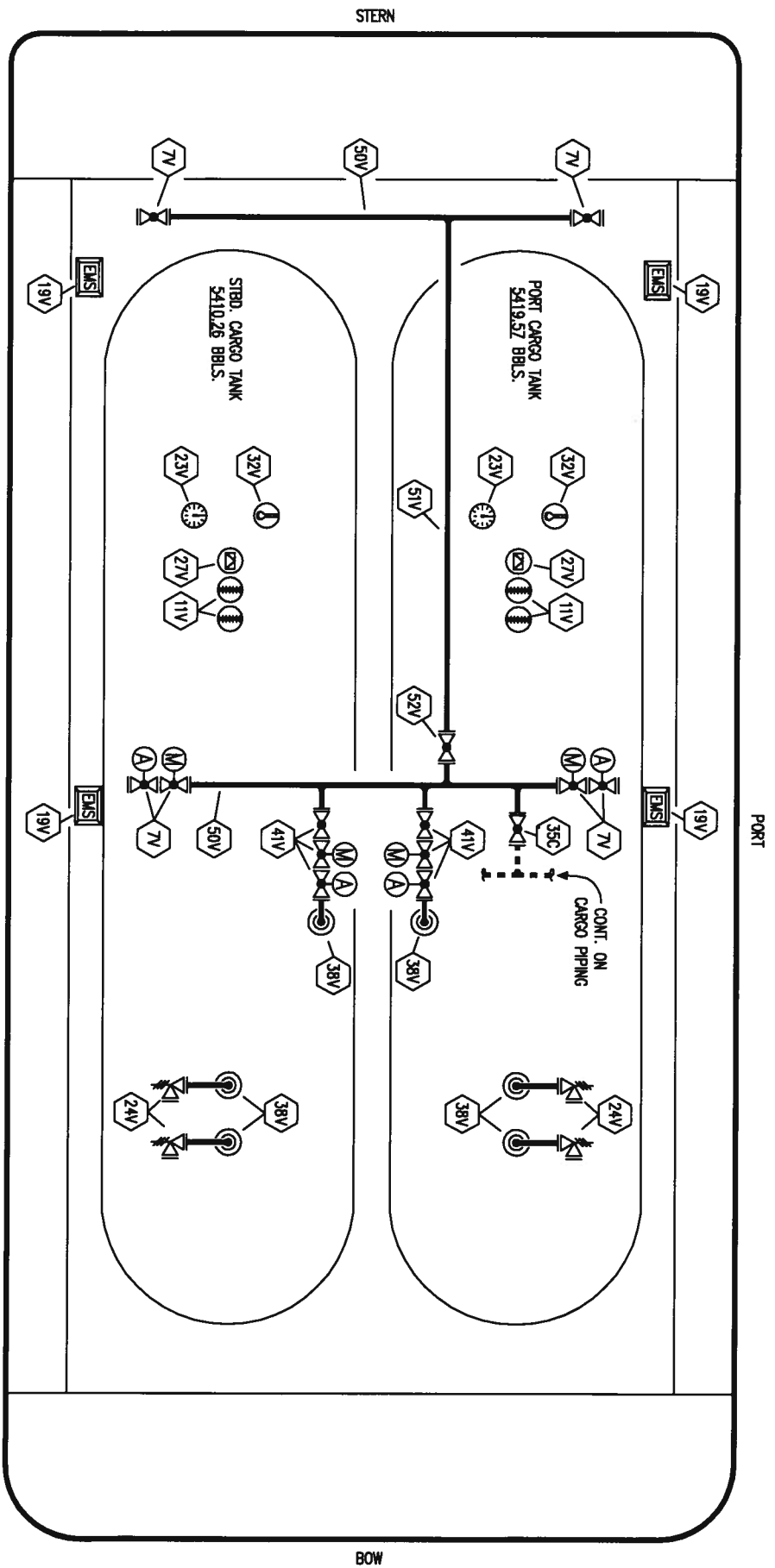
- | | |
|---------------------|--------------------------|
| NO | DESCRIPTION |
| 1C | CARGO TANK VALVE |
| 5C | HEADER VALVE |
| 13C | CARGO PIPING BLOCK VALVE |
| 19C | CARGO HEADER |
| 30C | CARGO PIPELINE |
| 35C | CROSSOVER VALVE |
| 37C | CARGO DROP |
| — ABOVE DECK PIPING | |
| (M) | MANUEL VALVE |
| (A) | AUTOMATIC VALVE |

REV.	DATE	BY	CHK	APP	REVISION DESCRIPTION
0	04/06/09	WK	RB	OF	APPROVED

KIRBY INLAND MARINE

CARGO PIPING FLOW DIAGRAM
KIRBY 10807

SCALE: NONE
 PAGE: 1 OF 2
 REV. 0

CARUTHERSVILLE SHIPYARD EX: HW CHEM 113



- | | |
|-----|-----------------------|
| NO | DESCRIPTION |
| 7V | HEADER VALVE |
| 11V | 1 METER GAUGE STICK |
| 19V | EMERGENCY SHUT DOWN |
| 23V | PRESSURE GAUGE |
| 24V | PRESSURE RELIEF VALVE |
| 27V | SEW VALVE |
| 32V | TEMPERATURE GAUGE |
| 35C | CROSSOVER VALVE |
| 38V | VAPOR DROP |

- | | |
|-----|-------------------|
| NO | DESCRIPTION |
| 41V | VAPOR TANK VALVE |
| 50V | VAPOR HEADER |
| 51V | VAPOR PIPELINE |
| 52V | BLOCK VALVE |
| (M) | ABOVE DECK PIPING |
| (A) | MANUEL VALVE |
| (A) | AUTOMATIC VALVE |

0	04/06/09	WK	RB	OF	APPROVED
REV.	DATE	BY	CHK	APP	REVISION DESCRIPTION

KIRBY INLAND MARINE

VAPOR

PIPING FLOW DIAGRAM

SCALE: NONE

PAGE: 2 OF 2

KIRBY 10807

REV. 0

CARUTHERSVILLE SHIPYARD EX: HW CHEM 113