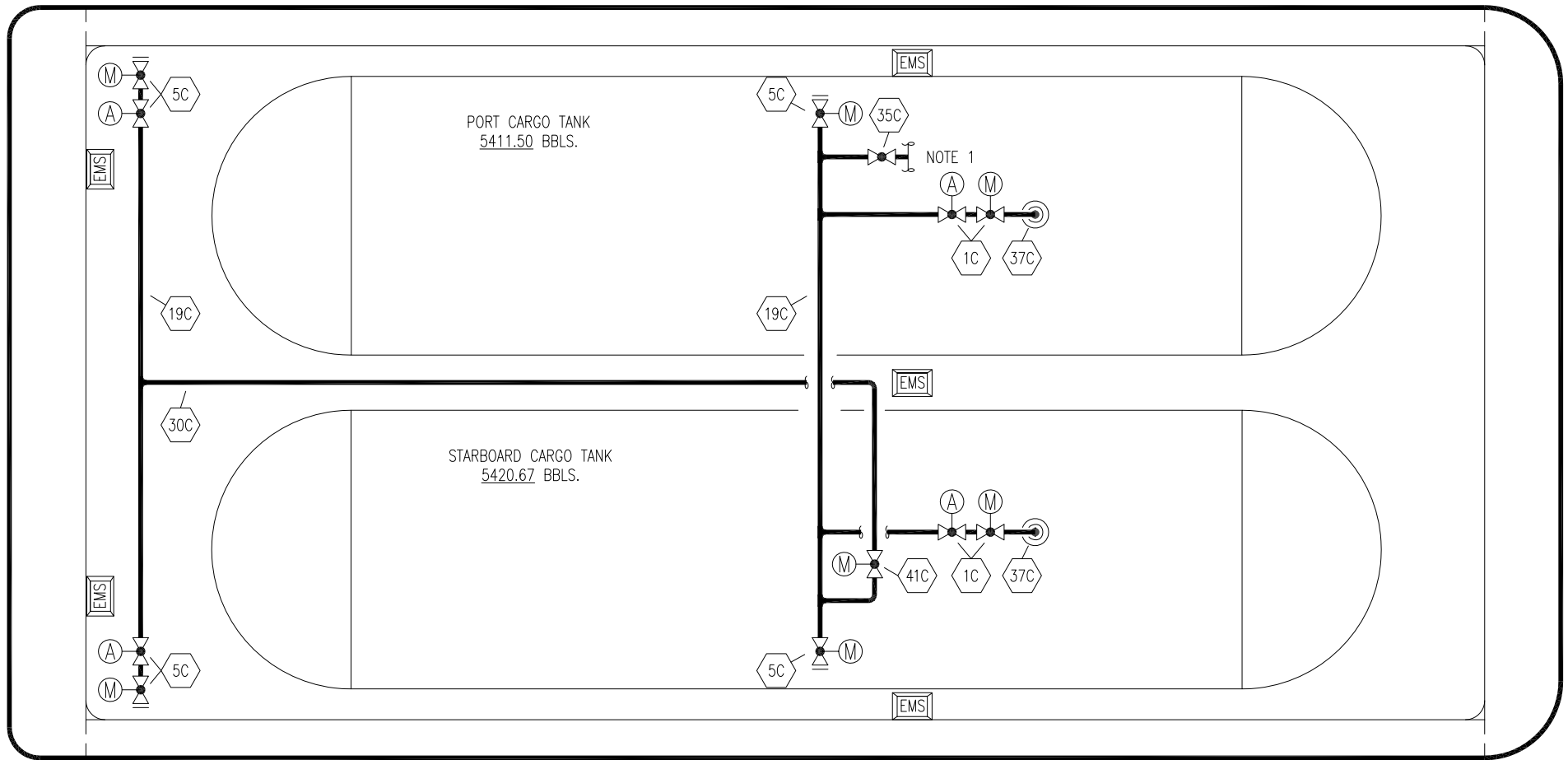


PORT

STERN

BOW



STARBOARD

- | | |
|-----|-------------------|
| NO | DESCRIPTION |
| 1C | CARGO TANK VALVE |
| 5C | HEADER VALVE |
| 19C | CARGO HEADER |
| 30C | CARGO PIPELINE |
| 35C | CROSSOVER VALVE |
| 37C | CARGO DROP |
| 41C | BLOCK VALVE |
| | ABOVE DECK PIPING |
| | MANUAL |
| | AUTOMATIC |

NOTE 1: CONTINUED ON VAPOR DWG.

NASHVILLE BRIDGE – EX: HW CHEM 106

1	10/02/20	MRV	DDA	TL	REVISED PER CLIENT COMMENTS	
0	10/19/09	LT	RB	OF	APPROVED	
REV.	DATE	BY	CHK	APP	REVISION DESCRIPTION	

KIRBY INLAND MARINE

**CARGO
PIPING FLOW DIAGRAM**

SCALE: NONE
PAGE: 1 OF 2

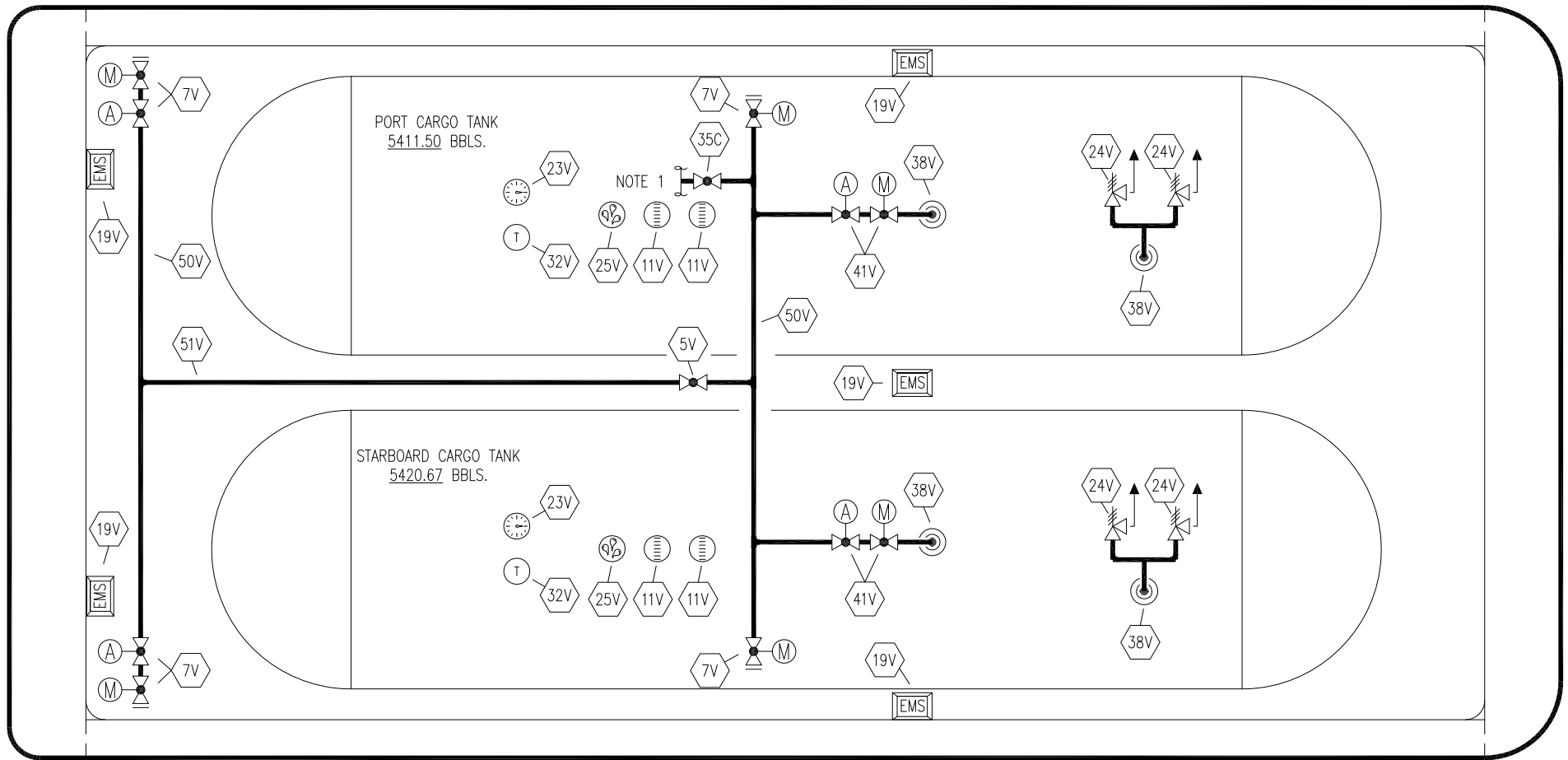
KIRBY 10800

REV. **1**

PORT

STERN

BOW



STARBOARD

- | | |
|-----|-----------------------------|
| NO | DESCRIPTION |
| 5V | BLOCK VALVE |
| 7V | HEADER VALVE |
| 11V | 8" 1-METER STICK GAUGE |
| 19V | EMERGENCY SHUT DOWN |
| 23V | PRESSURE GAUGE |
| 24V | PRESSURE RELIEF VALVE/STACK |
| 25V | SPEW TUBES |
| 32V | TEMPERATURE GAUGE |
| 35C | CROSSOVER VALVE |
| 41V | VAPOR TANK VALVE |

- | | |
|-----|-------------------|
| NO | DESCRIPTION |
| 50V | VAPOR HEADER |
| 51V | VAPOR PIPELINE |
| 62V | SLIP TUBE GAUGE |
| | ABOVE DECK PIPING |
| (M) | MANUAL |
| (A) | AUTOMATIC |

NOTE 1: CONTINUED ON CARGO DWG.

NASHVILLE BRIDGE – EX: HW CHEM 106

1	10/02/20	MRV	DDA	TL	REVISED PER CLIENT COMMENTS
0	10/19/09	LT	RB	OF	APPROVED
REV.	DATE	BY	CHK	APP	REVISION DESCRIPTION

KIRBY INLAND MARINE

**VAPOR
PIPING FLOW DIAGRAM**

SCALE: NONE
PAGE: 2 OF 2

KIRBY 10800

REV. **1**