

- | | | | | | |
|-----|------|-----------------------------------|-----|------|-------------------|
| NO | SIZE | DESCRIPTION | NO | SIZE | DESCRIPTION |
| 1C | 8" | CARGO TANK VALVE | 30C | 10" | CARGO PIPELINE |
| 2C | 8" | LOAD VALVE | 37C | 8" | CARGO DROP |
| 3C | 10" | MASTER SUCTION VALVE | --- | --- | ABOVE DECK PIPING |
| 4C | 6" | DISCHARGE VALVE | --- | --- | BELOW DECK PIPING |
| 5C | 8" | HEADER VALVE | | | |
| 6C | 8" | SALVAGE VALVE | | | |
| 9C | 6" | CHECK VALVE | | | |
| 11C | 1" | BLEED OFF VALVE (NENT) | | | |
| 15C | 1" | BYPASS VALVE (AROUND CHECK VALVE) | | | |
| 19C | 8" | CARGO HEADER | | | |

NOTE 1: CONTAINMENT - PORT & STB.

JEFFBOAT - EX: S/R 112

REV	DATE	BY	CHK	APP	REVISION DESCRIPTION
0	02/02/09	RB	WK	OF	APPROVED

KIRBY INLAND MARINE

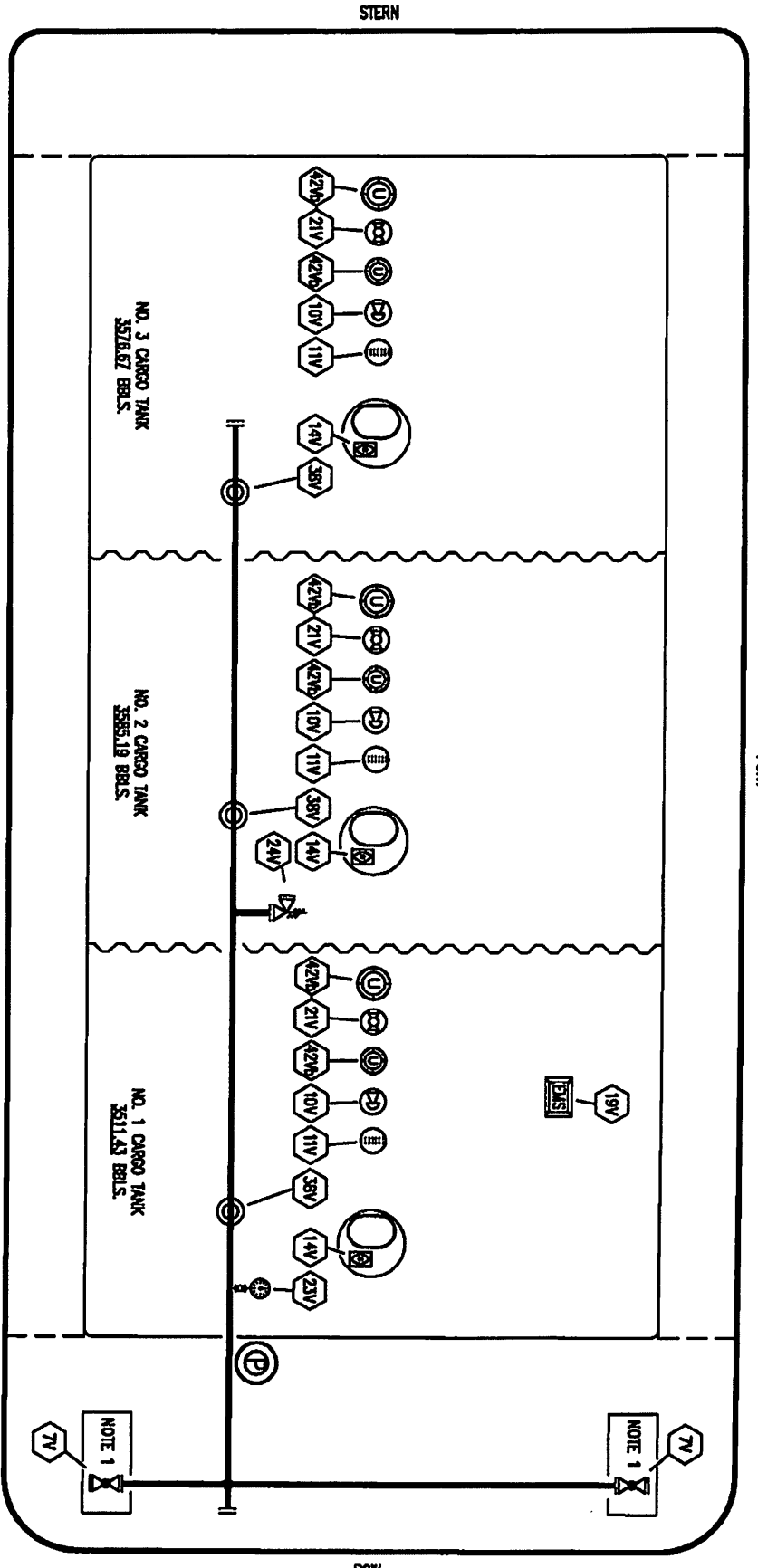
CARGO PIPING FLOW DIAGRAM

KIRBY 10560

SCALE: NONE
PAGE: 1 OF 3

REV	0
-----	---

PORT



STERN

STARBOARD

NOTE 1: CONTAINMENT - PORT & STB.

JEFFBOAT - EX: S/R 112

- | NO. | SIZE | DESCRIPTION |
|-----|------|---------------------------|
| 7V | 8" | HEADER VALVE |
| 10V | | HIGH LEVEL/OVERFILL ALARM |
| 11V | | 1 METER GAUGE STICK |
| 14V | | SIGHT GLASS |
| 19V | | EMERGENCY SHUTDOWN SYSTEM |
| 21V | | HERMETIC GAUGE |
| 23V | | PRESSURE GAUGE |
| 24V | 3" | PRESSURE RELIEF VALVE |
| 38V | | VAPOR DROP |
| 42V | 6" | ULLAGE |
| 42V | 8" | ULLAGE |
| 42V | | ABOVE DECK PIPING |

REV.	DATE	BY	CHK	APP	REVISION	DESCRIPTION	SCALE	DATE	BY	CHK	APP	REVISION	DESCRIPTION
0	02/02/09	RB	WK	OF	APPROVED		NONE						

KIRBY INLAND MARINE

VAPOR

PIPING FLOW DIAGRAM

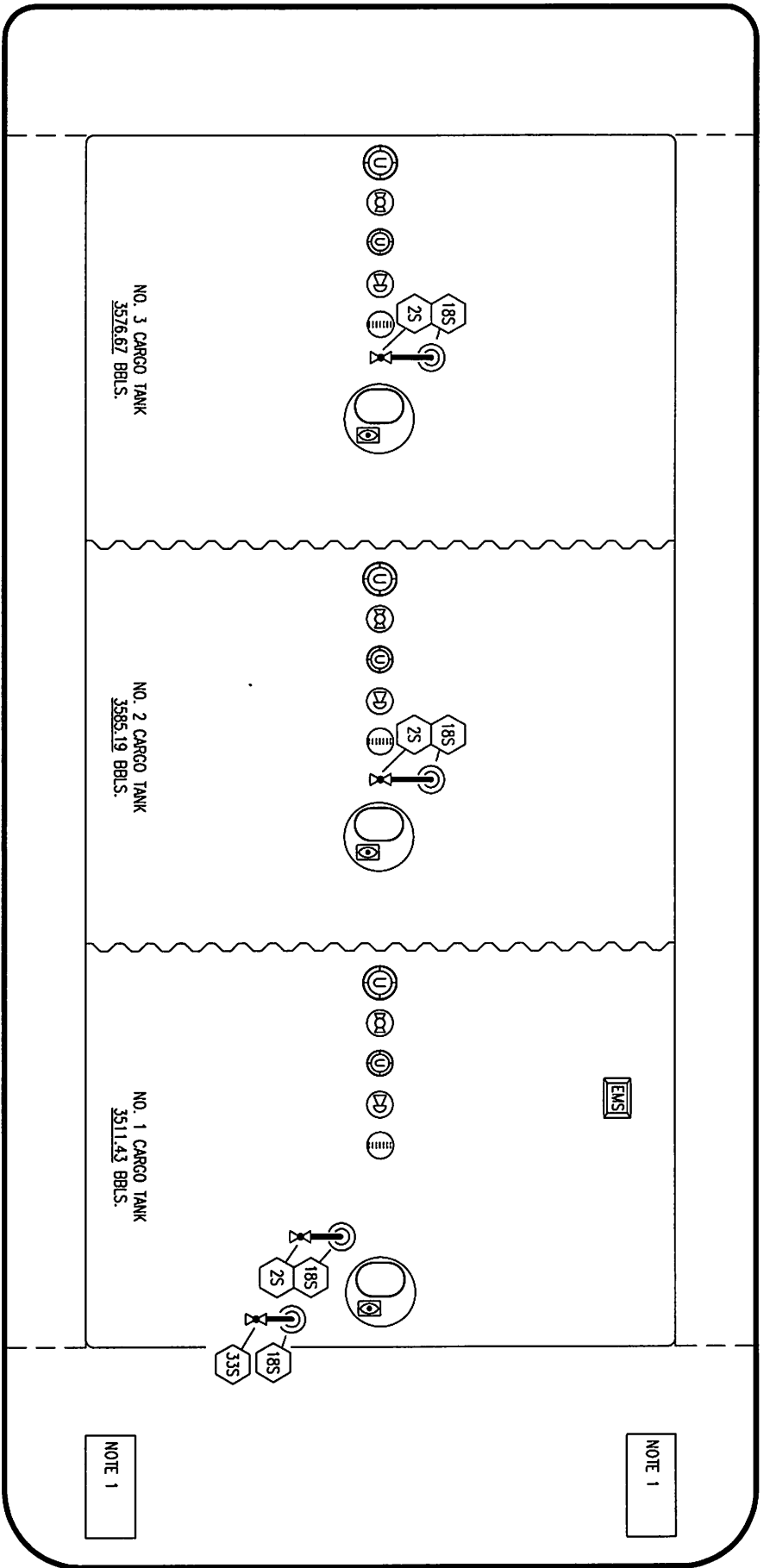
KIRBY 10560

PAGE: 2 OF 3

REV. 0

PORT

STERN



STARBOARD

BOW

NO. SIZE DESCRIPTION

2S

CARGO TANK VALVE

18S

STRIPPING DROP

33S

PUMP WELL SUCTION

— ABOVE DECK PIPING
 - - - BELOW DECK PIPING

NOTE 1

NOTE 1

NOTE 1: CONTAINMENT - PORT & STB.

JEFFBOAT - EX: S/R 112

REV.	DATE	BY	CHK	APP	REVISION DESCRIPTION
1	02/25/15	DDA	DDA	OF	REVISED PER CLIENT COMMENTS
0	02/02/09	RB	WK	OF	APPROVED

KIRBY INLAND MARINE



STRIPPING

PIPING FLOW DIAGRAM

SCALE: NONE
PAGE: 3 OF 3

KIRBY 10560

REV. 1