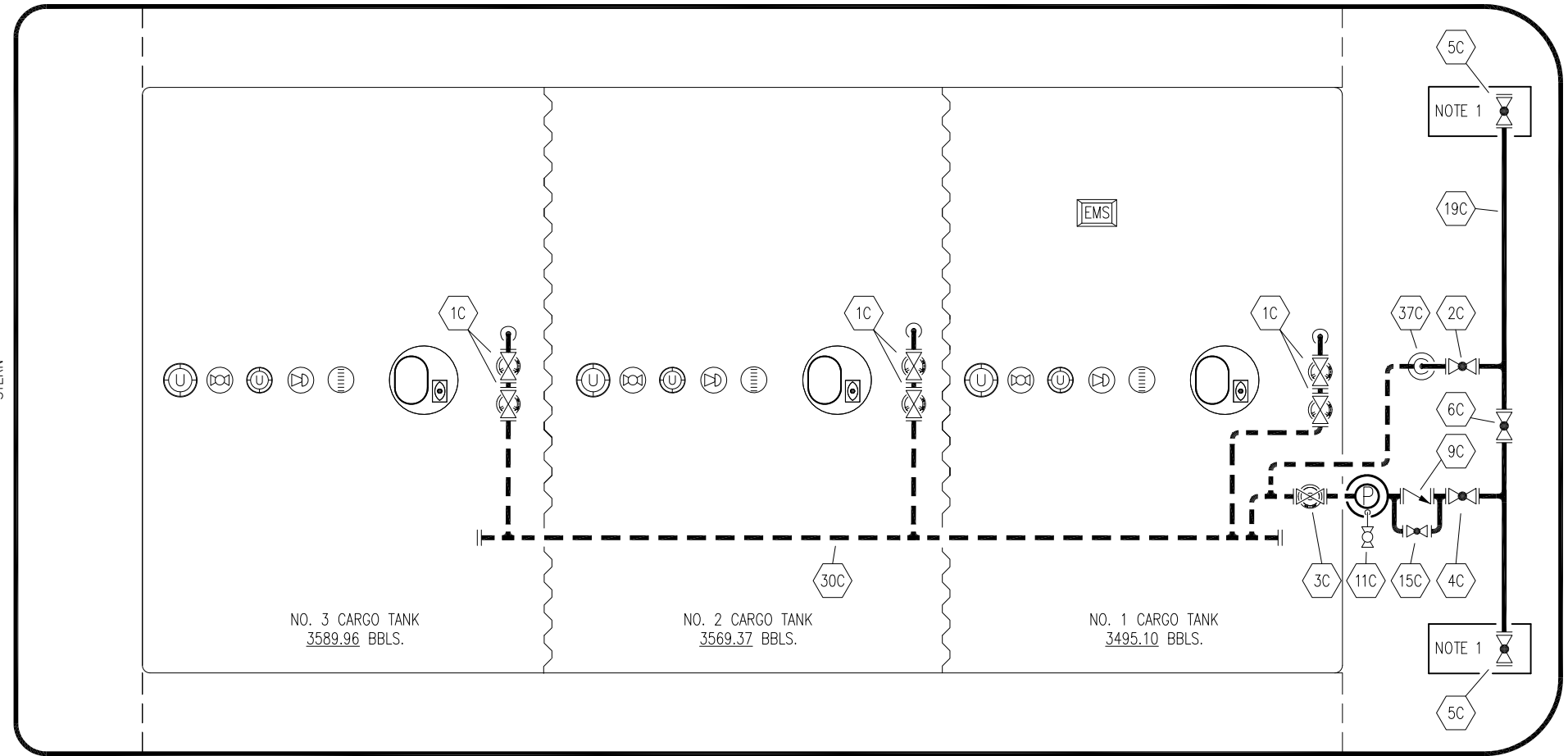


PORT

STERN

BOW



NO. 3 CARGO TANK  
3589.96 BBLs.

NO. 2 CARGO TANK  
3569.37 BBLs.

NO. 1 CARGO TANK  
3495.10 BBLs.

STARBOARD

NO	SIZE	DESCRIPTION	NO	SIZE	DESCRIPTION
1C	8"	CARGO TANK VALVE	30C	10"	CARGO PIPELINE
2C	8"	LOAD VALVE	37C	8"	CARGO DROP
3C	10"	MASTER SUCTION VALVE	—	—	— ABOVE DECK PIPING
4C	6"	DISCHARGE VALVE	---	---	--- BELOW DECK PIPING
5C	8"	HEADER VALVE			
6C	8"	SALVAGE VALVE			
9C	6"	CHECK VALVE			
11C	1"	BLEED OFF VALVE (VENT)			
15C	1"	BYPASS VALVE (AROUND CHECK VALVE)			
19C	8"	CARGO HEADER			

NOTE 1: CONTAINMENT- PORT & STB.

JEFFBOAT - EX: S/R 107

REV.	DATE	BY	CHK	APP	REVISION DESCRIPTION
1	11/29/21	MRV	DDA	DW	REVISED PER CLIENT COMMENTS
0	02/02/09	RB	WK	OF	APPROVED

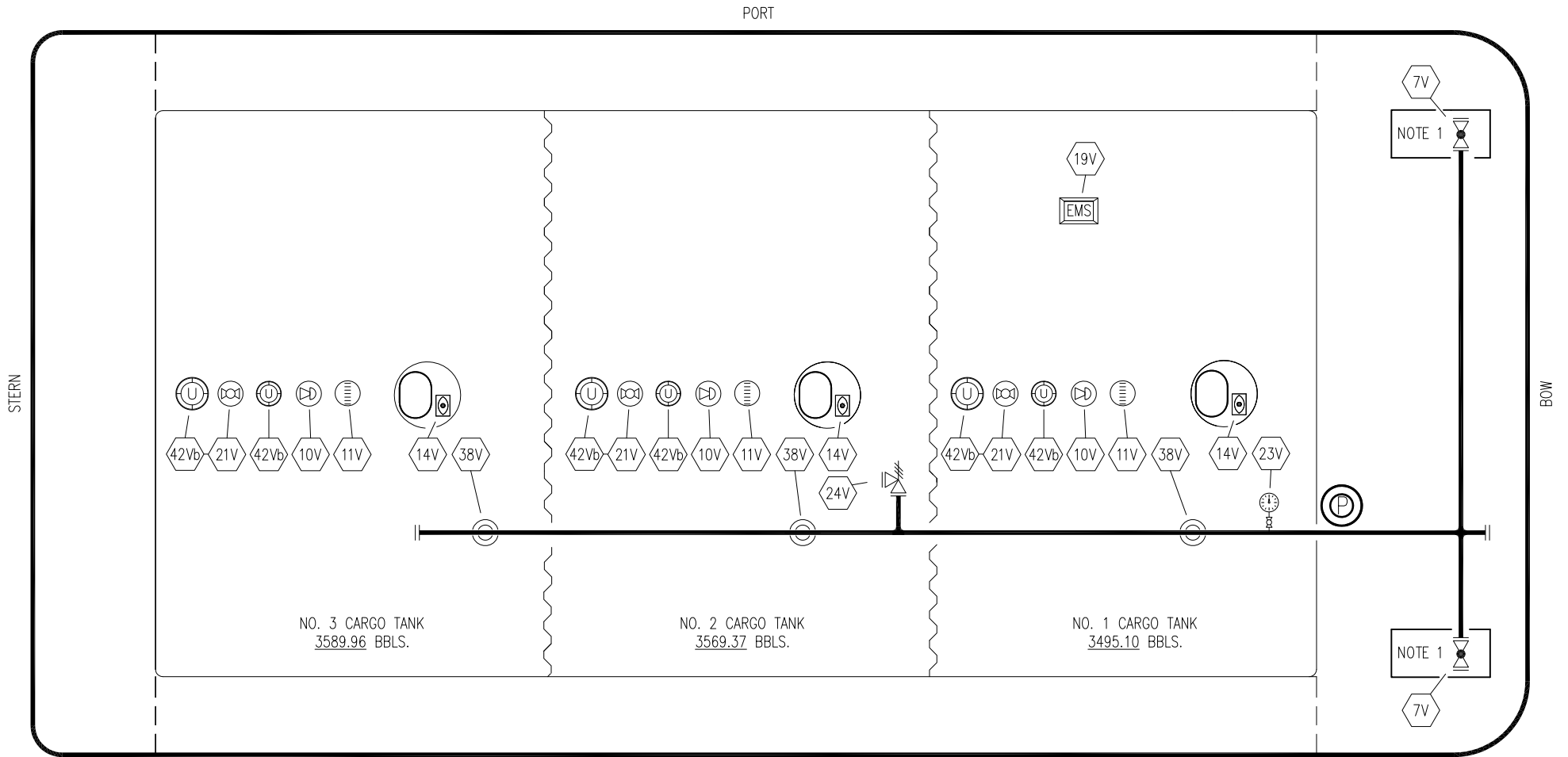
KIRBY INLAND MARINE 

**CARGO  
PIPING FLOW DIAGRAM**

SCALE: NONE  
PAGE: 1 OF 3

**KIRBY 10556**

REV. **1**



- | NO                  | SIZE | DESCRIPTION               |
|---------------------|------|---------------------------|
| 7V                  | 8"   | HEADER VALVE              |
| 10V                 |      | HIGH LEVEL/OVERFILL ALARM |
| 11V                 |      | 1 METER GAUGE STICK       |
| 14V                 |      | SIGHT GLASS               |
| 19V                 |      | EMERGENCY SHUTDOWN SYSTEM |
| 21V                 |      | HERMETIC GAUGE            |
| 23V                 |      | PRESSURE GAUGE            |
| 24V                 | 3"   | PRESSURE RELIEF VALVE     |
| 38V                 |      | VAPOR DROP                |
| 42Va                | 6"   | ULLAGE                    |
| 42Vb                | 8"   | ULLAGE                    |
| — ABOVE DECK PIPING |      |                           |

STARBOARD

NOTE 1: CONTAINMENT- PORT & STB.

JEFFBOAT -- EX: S/R 107

REV.	DATE	BY	CHK	APP	REVISION DESCRIPTION
1	11/29/21	MRV	DDA	DW	REVISED PER CLIENT COMMENTS
0	02/02/09	RB	WK	OF	APPROVED

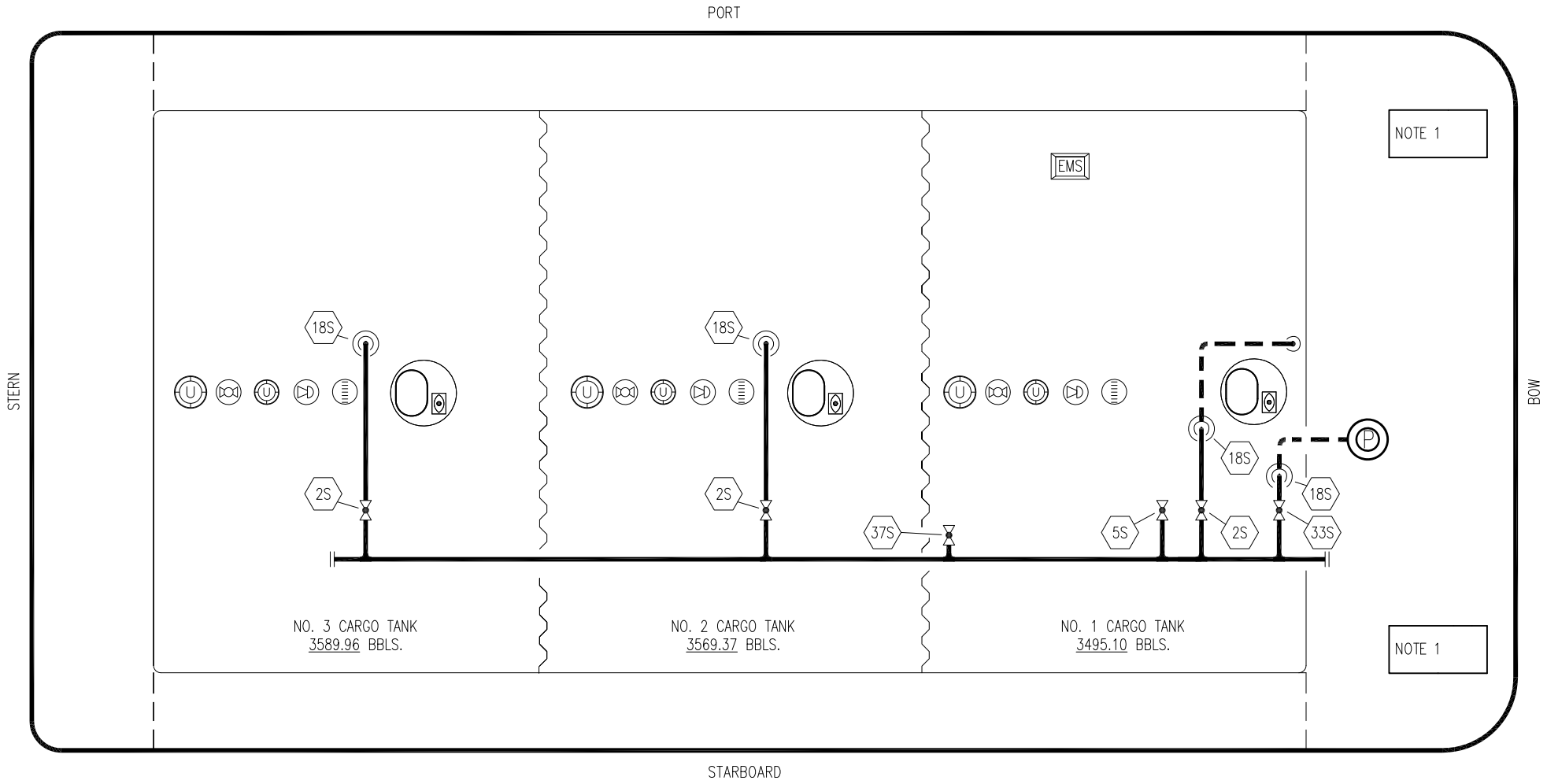
KIRBY INLAND MARINE 

**VAPOR  
PIPING FLOW DIAGRAM**

SCALE: NONE  
PAGE: 2 OF 3

**KIRBY 10556**

REV. **1**



NOTE 1

NOTE 1

NOTE 1: CONTAINMENT- PORT & STB.

JEFFBOAT - EX:S/R 107

NO	SIZE	DESCRIPTION	NO	SIZE	DESCRIPTION
2S		CARGO TANK VALVE	33S		PUMP WELL SUCTION
5S		SLOP TANK SUCTION VALVE	37S		BLOCK VALVE
18S		STRIPPING DROP	39S	2 1/2"	P/V VALVE

— ABOVE DECK PIPING  
 - - - BELOW DECK PIPING

REV.	DATE	BY	CHK	APP	REVISION DESCRIPTION
1	11/29/21	MRV	DDA	DW	REVISED PER CLIENT COMMENTS
0	02/02/089	RB	WK	OF	APPROVED

**KIRBY INLAND MARINE**

**STRIPPING  
PIPING FLOW DIAGRAM**

SCALE: NONE	<b>KIRBY 10556</b>	REV. <b>1</b>
PAGE: 3 OF 3		