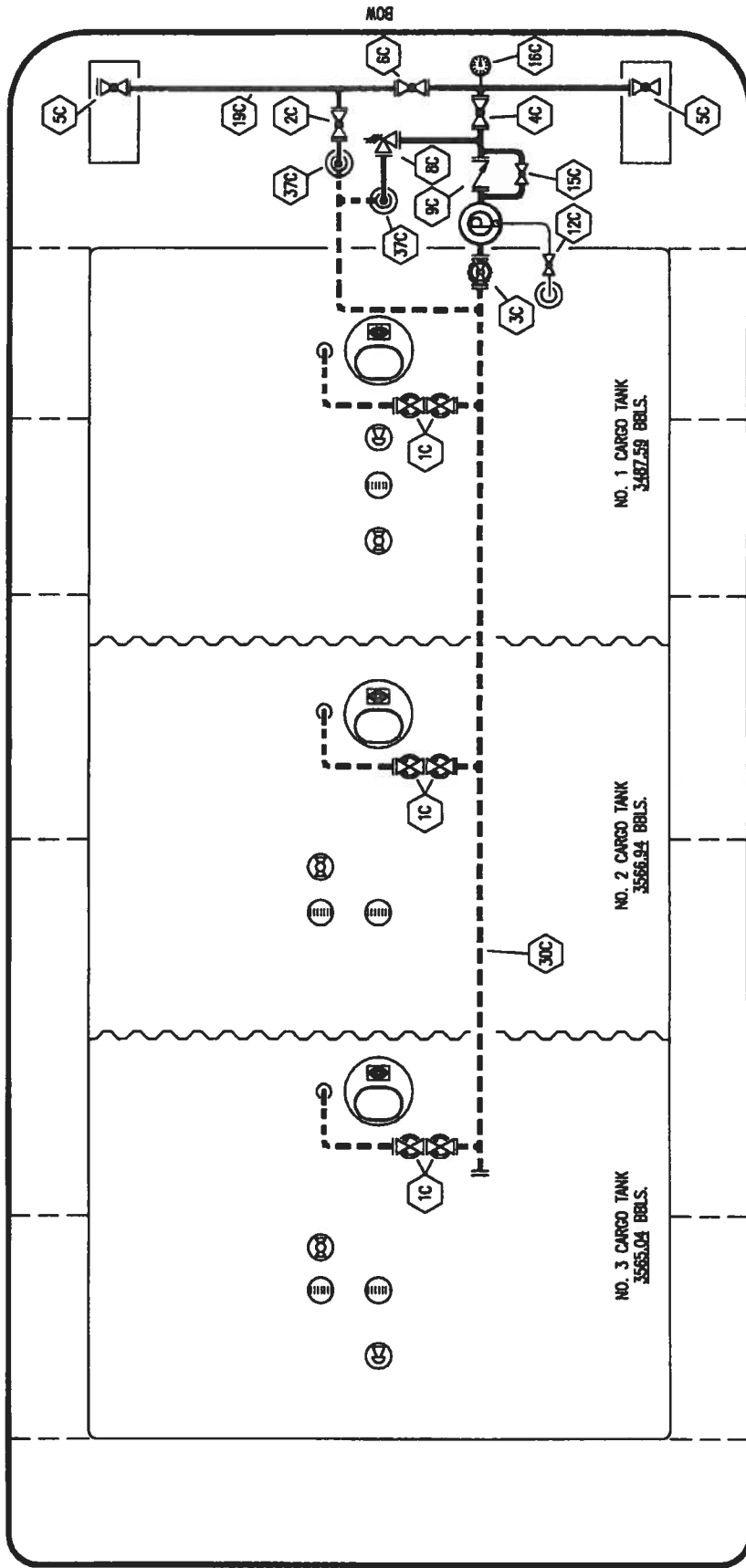


PORT



STERN

JEFFBOAT - EX: S/R 106



KIRBY INLAND MARINE

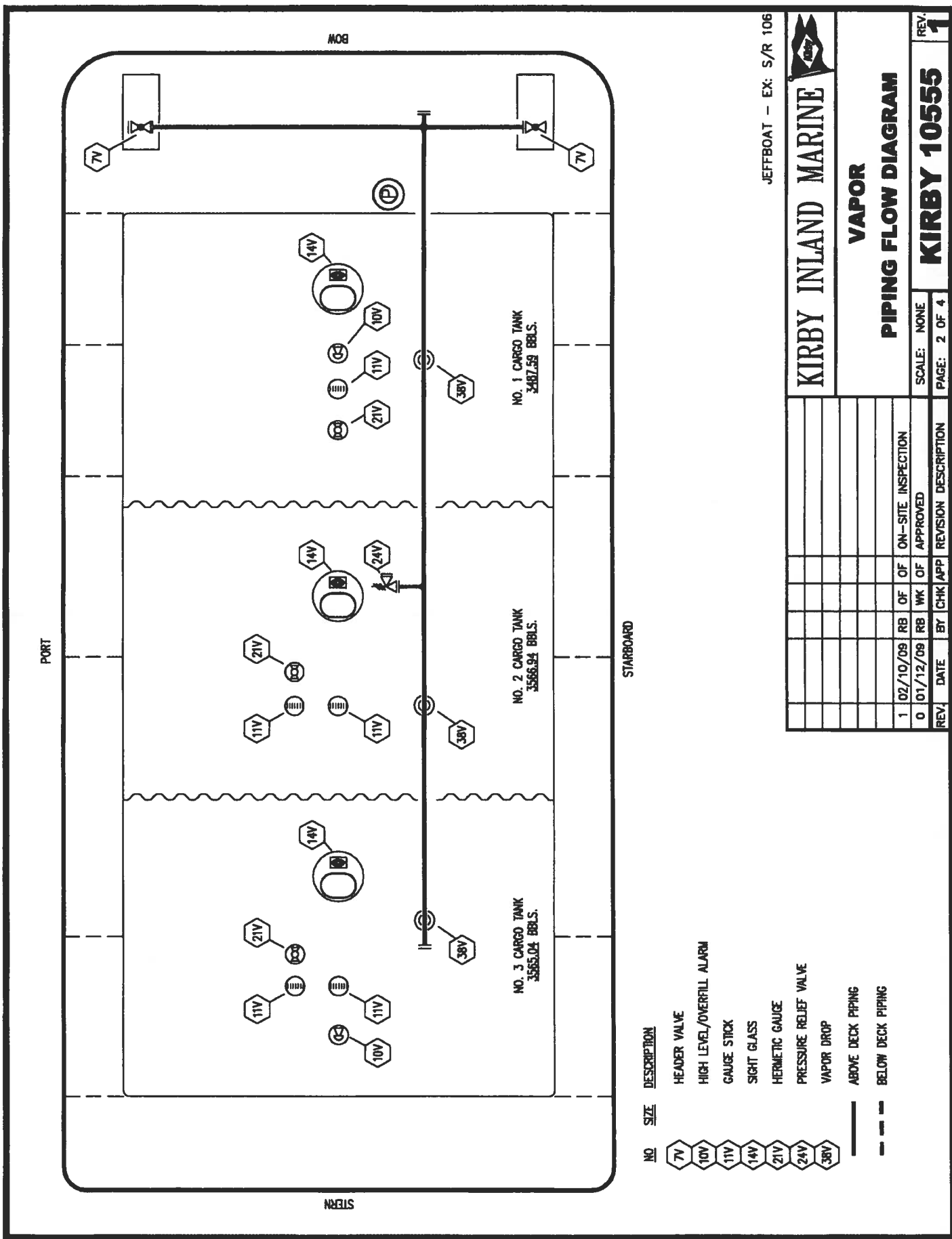
**CARGO**  
**PIPING FLOW DIAGRAM**

SCALE: NONE  
PAGE: 1 OF 4  
REV. **1**

STARBOARD

NO	SIZE	DESCRIPTION	NO	SIZE	DESCRIPTION
1C		CARGO TANK VALVE	16C		DISCHARGE PRESSURE GAUGE
2C		LOAD VALVE	19C		CARGO HEADER
3C		MASTER SUCTION VALVE	30C		CARGO PIPELINE
4C		DISCHARGE VALVE	37C		CARGO DROP
5C		HEADER VALVE			ABOVE DECK PIPING
6C		SALVAGE VALVE			BELOW DECK PIPING
7C		RELIEF VALVE			
8C		CHECK VALVE			
9C		BURP VALVE RETURN TO CARGO TANK			
12C		BYPASS VALVE (AROUND CHECK VALVE)			
15C					

REV.	DATE	BY	CHK	APP	REVISION DESCRIPTION
1	02/10/09	RB	OF	OF	ON-SITE INSPECTION
0	01/12/09	RB	WK	OF	APPROVED



JEFFBOAT - EX: S/R 106

**KIRBY INLAND MARINE**

**VAPOR PIPING FLOW DIAGRAM**

REV. **1**

**KIRBY 10555**

SCALE: NONE  
PAGE: 2 OF 4

STARBOARD

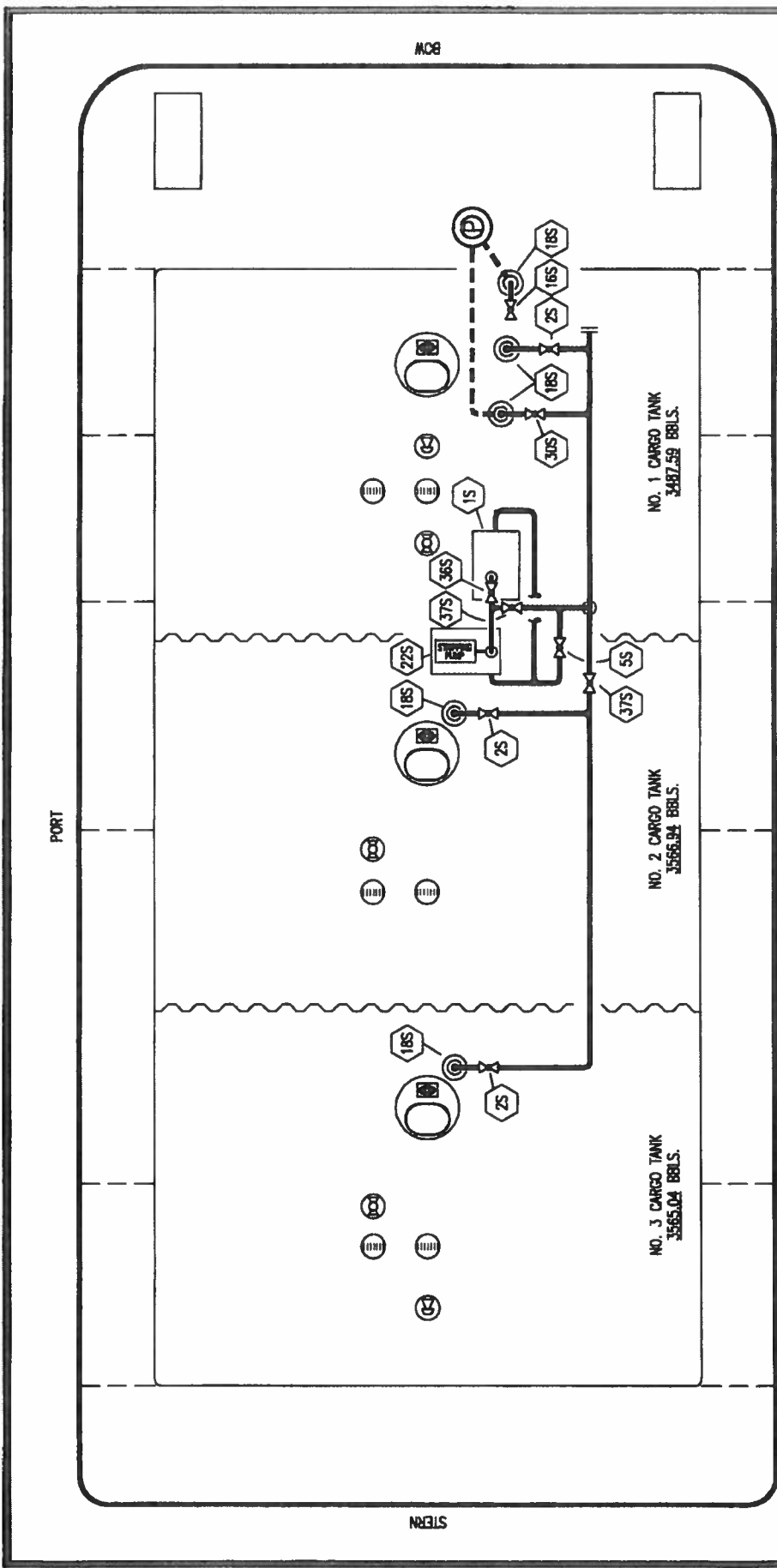
PORT

BOW

STERN

- NO. 7V
  - NO. 10V
  - NO. 11V
  - NO. 14V
  - NO. 21V
  - NO. 24V
  - NO. 38V
- DESCRIPTION
  - HEADER VALVE
  - HIGH LEVEL/OVERFILL ALARM
  - GAUGE STICK
  - SIGHT GLASS
  - HERMETIC GAUGE
  - PRESSURE RELIEF VALVE
  - VAPOR DROP
  - ABOVE DECK PIPING
  - BELOW DECK PIPING

REV.	DATE	BY	CHK	APP	REVISION DESCRIPTION
1	02/10/09	RB	OF	OF	ON-SITE INSPECTION
0	01/12/09	RB	WK	OF	APPROVED



JEFFBOAT - EX: S/R 106



**KIRBY INLAND MARINE**

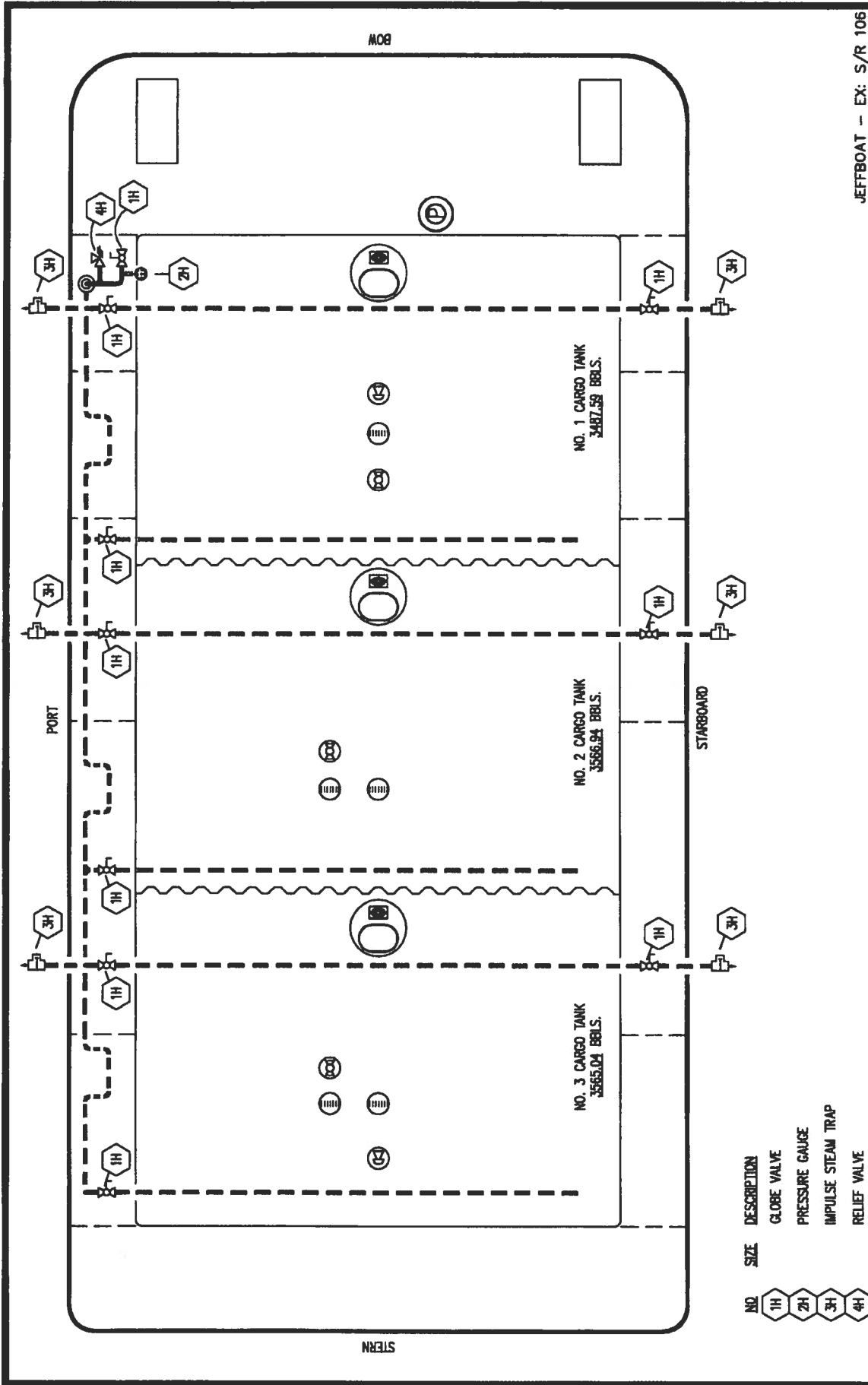
**STRIPPING  
PIPING FLOW DIAGRAM**

REV. 1

**KIRBY 10555**

SCALE: NONE  
PAGE: 3 OF 4

REV.	DATE	BY	CHK	APP	REVISION DESCRIPTION
1	02/10/09	RB	OF	ON-SITE INSPECTION	
0	01/12/09	RB	WK	APPROVED	



**KIRBY INLAND MARINE**

**HEATING  
PIPING FLOW DIAGRAM**

REV. **1**

**KIRBY 10555**

SCALE: NONE  
PAGE: 4 OF 4

REV.	DATE	BY	CHK/APP	REVISION DESCRIPTION
1	02/10/09	RB	OF	ON-SITE INSPECTION
0	01/12/09	RB	WK	APPROVED

- NO. SIZE DESCRIPTION
- 1H GLOBE VALVE
- 2H PRESSURE GAUGE
- 3H IMPULSE STEAM TRAP
- 4H RELIEF VALVE
- ABOVE DECK PIPING
- - - BELOW DECK PIPING