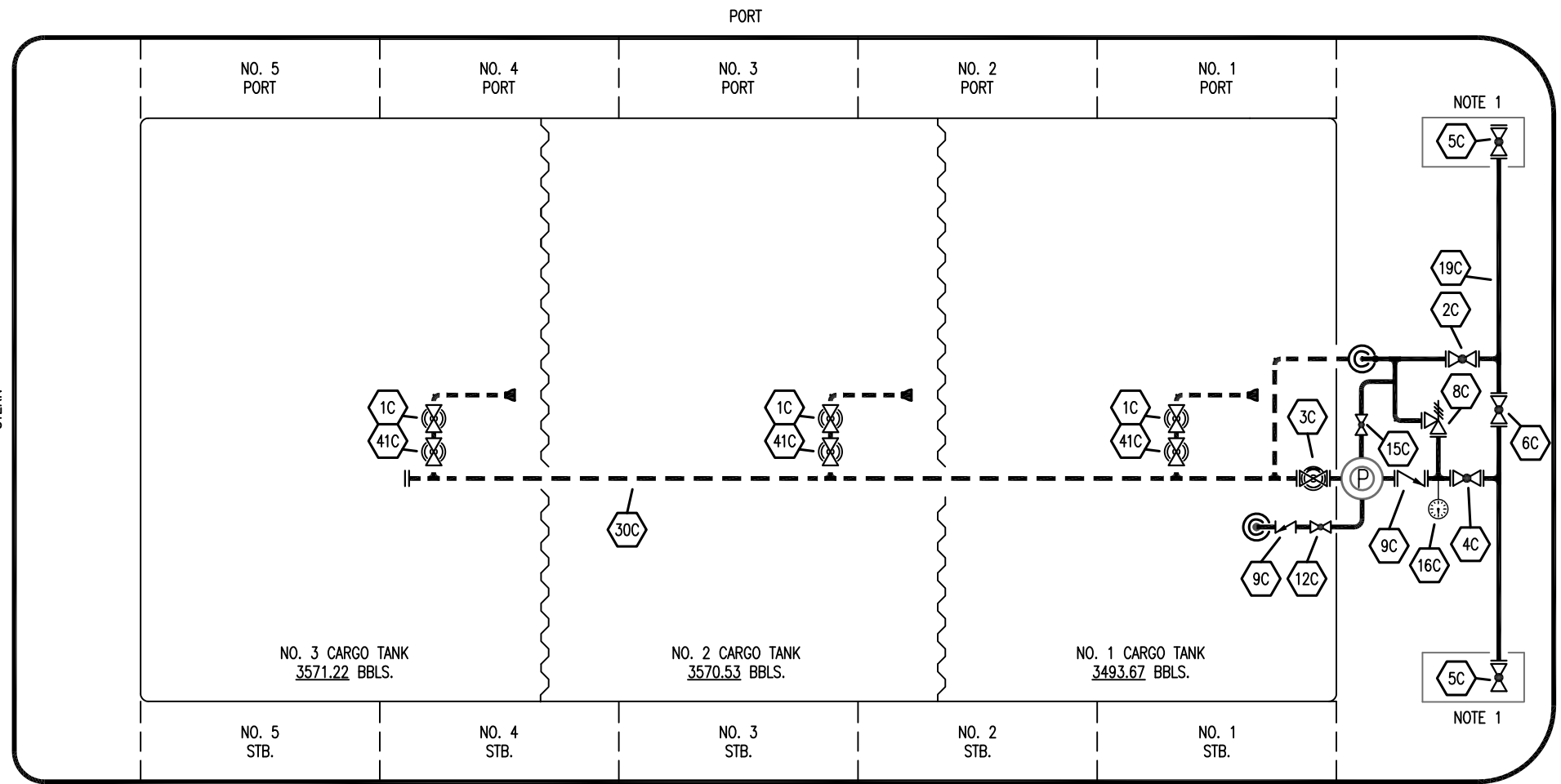


STERN



PORT

NO. 5 PORT

NO. 4 PORT

NO. 3 PORT

NO. 2 PORT

NO. 1 PORT

NO. 5 STB.

NO. 4 STB.

NO. 3 STB.

NO. 2 STB.

NO. 1 STB.

BOW

NO. 3 CARGO TANK  
3571.22 BBLS.

NO. 2 CARGO TANK  
3570.53 BBLS.

NO. 1 CARGO TANK  
3493.67 BBLS.

STARBOARD

- |     |                                 |     |                                   |
|-----|---------------------------------|-----|-----------------------------------|
| NO  | DESCRIPTION                     | NO  | DESCRIPTION                       |
| 1C  | CARGO TANK VALVE                | 15C | BYPASS VALVE (AROUND CHECK VALVE) |
| 2C  | LOAD VALVE                      | 19C | CARGO HEADER                      |
| 3C  | MASTER SUCTION VALVE            | 30C | CARGO PIPELINE                    |
| 4C  | DISCHARGE VALVE                 | 37C | CARGO DROP                        |
| 5C  | HEADER VALVE                    | 41C | SUCTION BLOCK VALVE               |
| 6C  | SALVAGE VALVE                   | —   | — ABOVE DECK PIPING               |
| 8C  | RELIEF VALVE                    | --- | --- BELOW DECK PIPING             |
| 9C  | CHECK VALVE                     |     |                                   |
| 12C | BURP VALVE RETURN TO CARGO TANK |     |                                   |

NOTE 1: CONTAINMENT P/S

JEFFBOAT -- EX: S/R 103

1	11/09/12	DCB	DDA		ADD SUCT BLOCK VALVE
0	01/12/09	RB	WK	OF	APPROVED
REV.	DATE	BY	CHK	APP	REVISION DESCRIPTION

**KIRBY INLAND MARINE**

**CARGO**

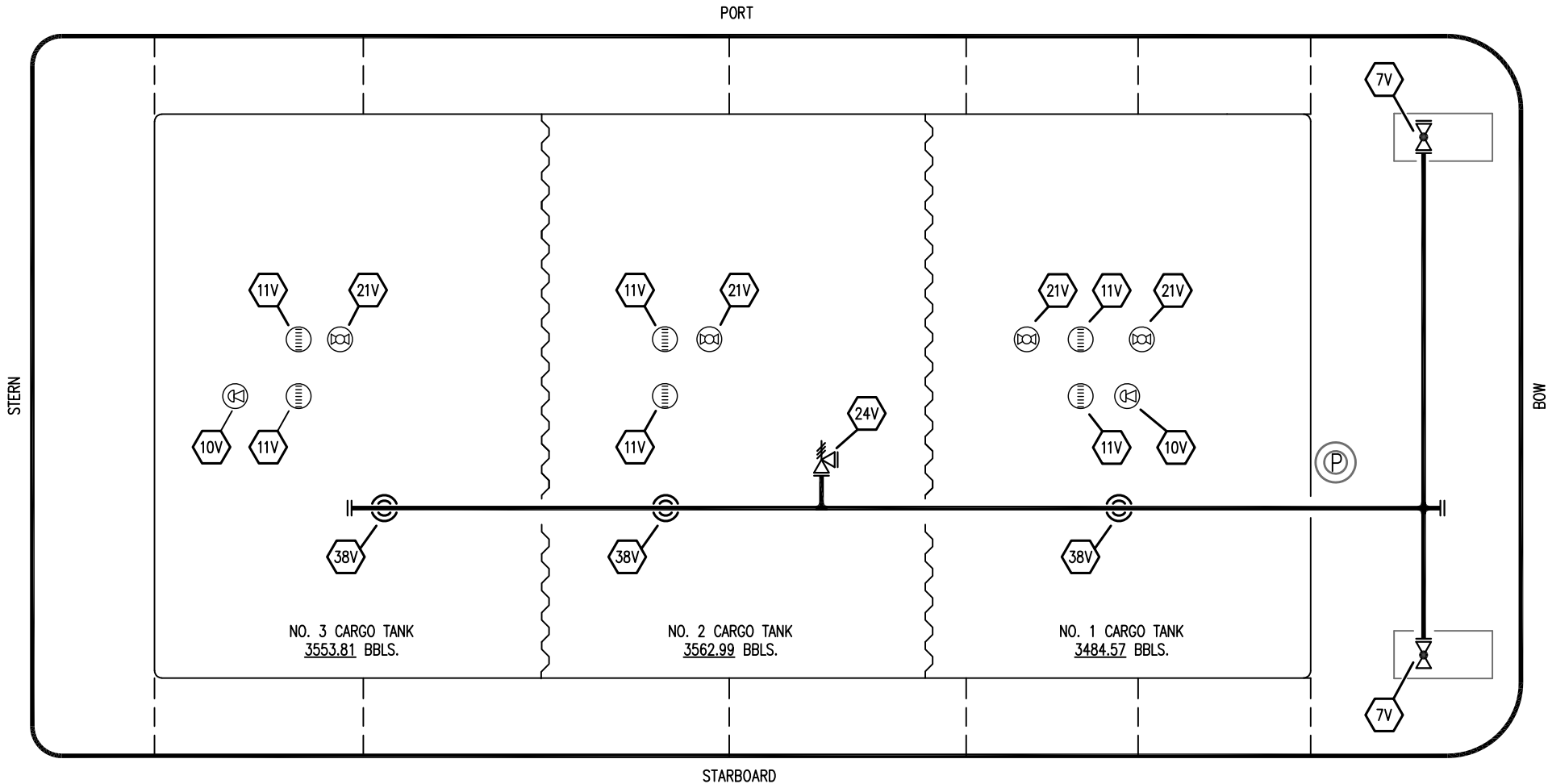
**PIPING FLOW DIAGRAM**

**KIRBY 10553**

SCALE: NONE

PAGE: 1 OF 4

REV. **1**



- | NO    | SIZE | DESCRIPTION               |
|-------|------|---------------------------|
| 7V    |      | HEADER VALVE              |
| 10V   |      | HIGH LEVEL/OVERFILL ALARM |
| 11V   |      | GAUGE STICK               |
| 21V   |      | HERMETIC GAUGE            |
| 24V   |      | PRESSURE RELIEF VALVE     |
| 38V   |      | VAPOR DROP                |
| — — — |      | ABOVE DECK PIPING         |
| - - - |      | BELOW DECK PIPING         |

JEFFBOAT – EX: S/R 104

0	01/12/09	RB	WK	OF	APPROVED	
REV.	DATE	BY	CHK	APP	REVISION DESCRIPTION	

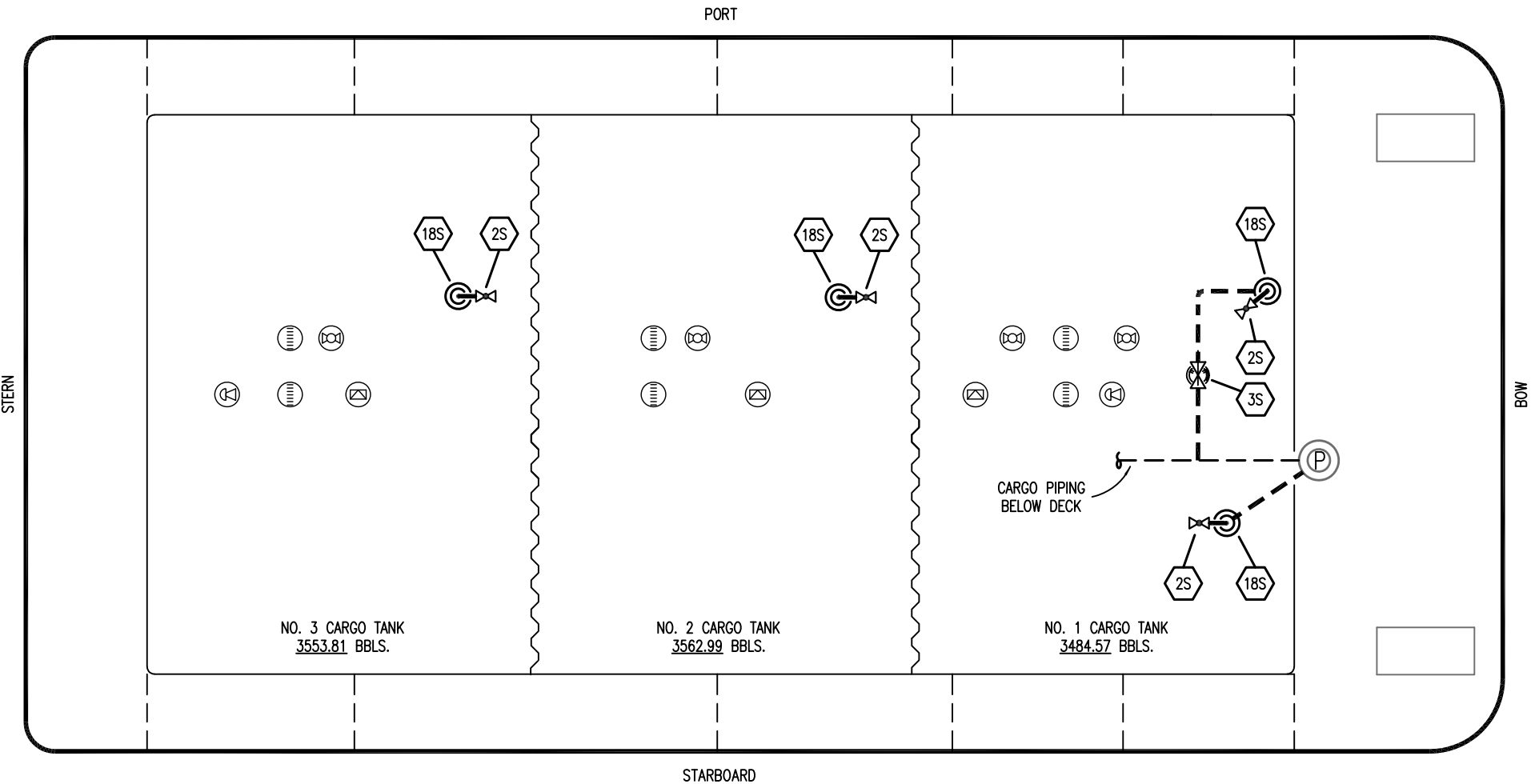
**KIRBY INLAND MARINE**

**VAPOR  
PIPING FLOW DIAGRAM**

SCALE: NONE  
PAGE: 2 OF 4

**KIRBY 10553**

REV. **0**



NO	SIZE	DESCRIPTION
2S		VALVE CARGO TANK
3S		VALVE MAIN CARGO PIPING
18S		STRIPPING DROP

— ABOVE DECK PIPING  
 - - - BELOW DECK PIPING

JEFFBOAT – EX: S/R 104

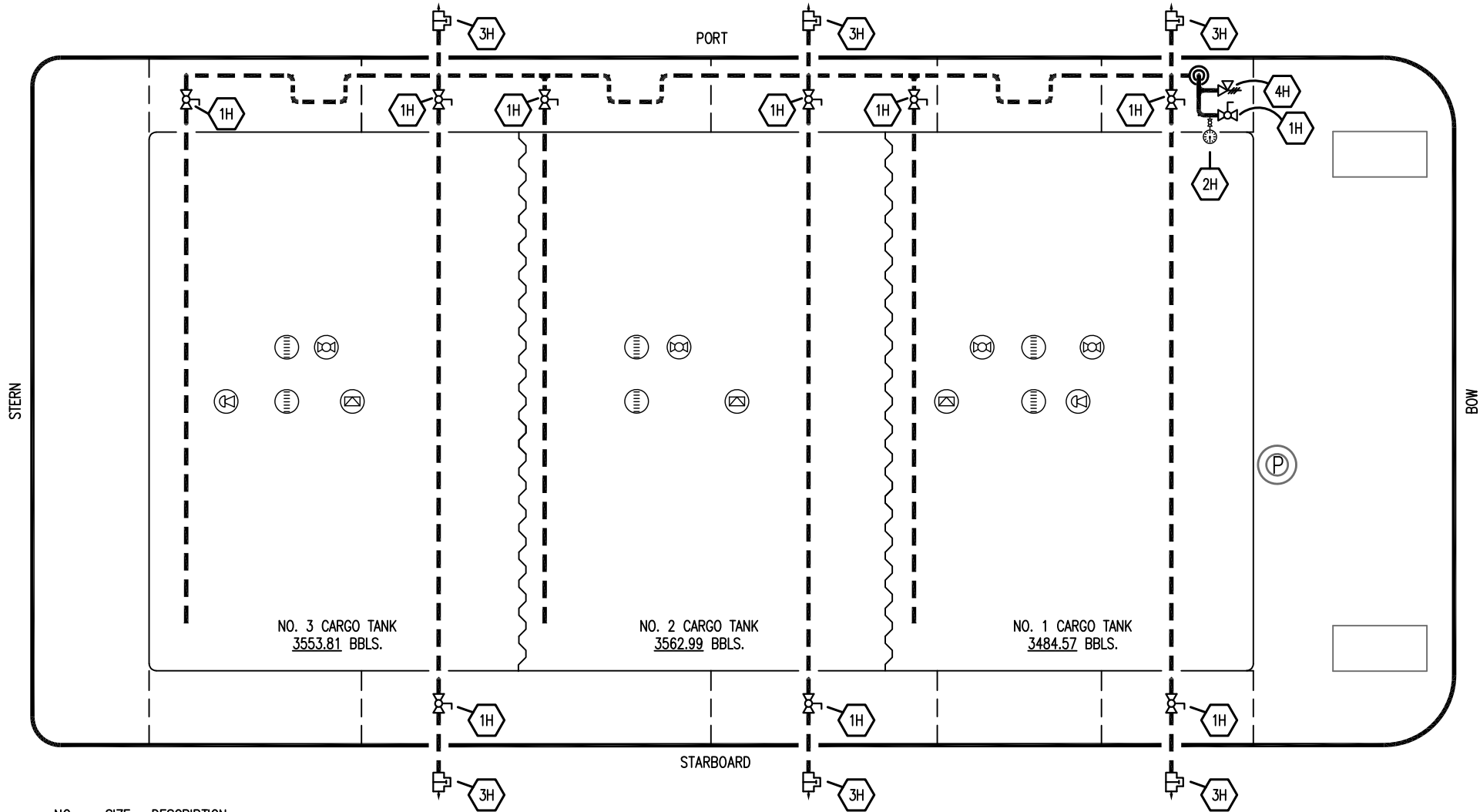
0	01/12/09	RB	WK	OF	APPROVED	
REV.	DATE	BY	CHK	APP	REVISION DESCRIPTION	

**KIRBY INLAND MARINE**

**STRIPPING  
PIPING FLOW DIAGRAM**

**KIRBY 10553**


SCALE: NONE  
 PAGE: 3 OF 4  
 REV. **0**



- | NO | SIZE | DESCRIPTION        |
|----|------|--------------------|
| 1H |      | GLOBE VALVE        |
| 2H |      | PRESSURE GAUGE     |
| 3H |      | IMPULSE STEAM TRAP |
| 4H |      | RELIEF VALVE       |

——— ABOVE DECK PIPING  
 - - - - - BELOW DECK PIPING

JEFFBOAT – EX: S/R 104

						<b>KIRBY INLAND MARINE</b> 	
0	01/12/09	RB	WK	OF	APPROVED	SCALE:	NONE
REV.	DATE	BY	CHK	APP	REVISION DESCRIPTION	PAGE:	4 OF 4
						<b>KIRBY 10553</b>	
						<b>REV. 0</b>	