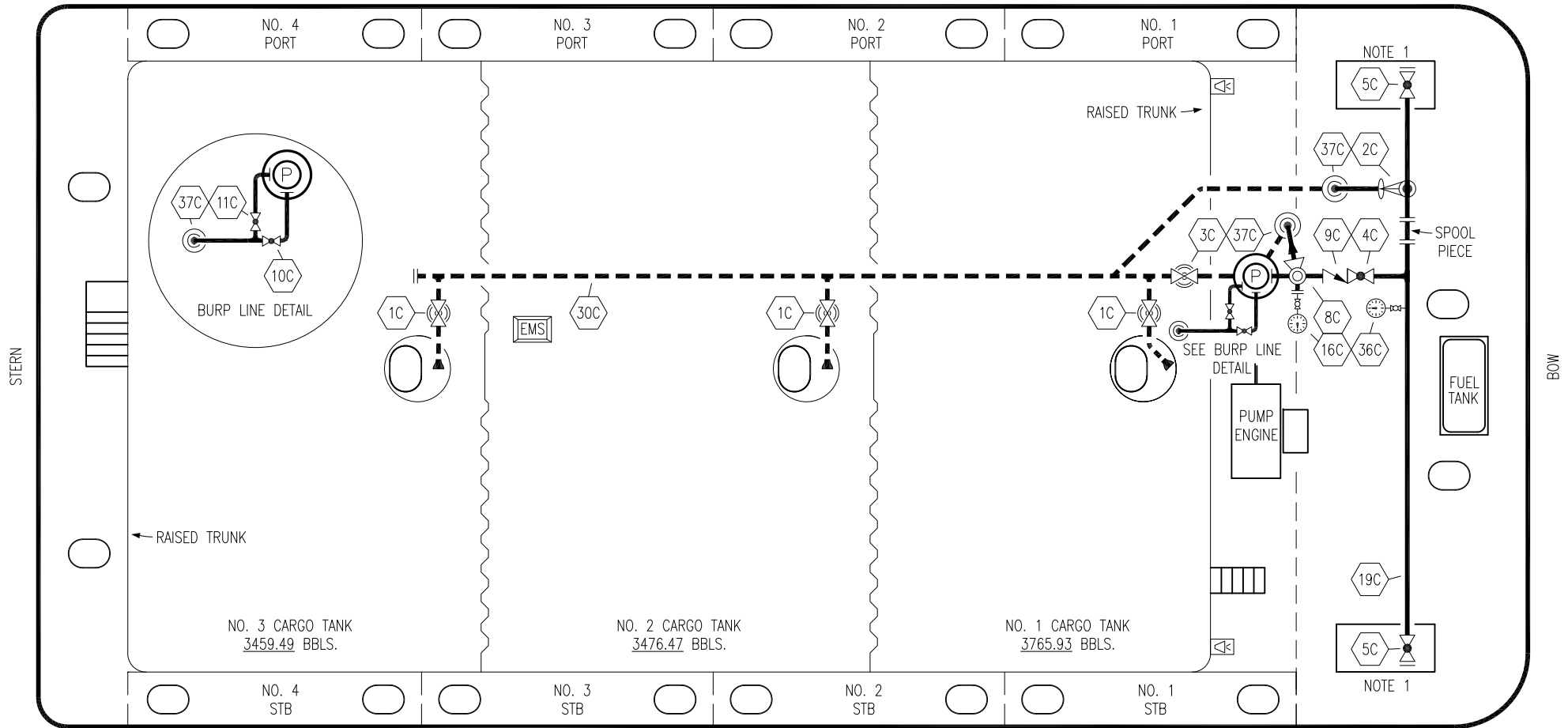


PORT



NO. 4 PORT

NO. 3 PORT

NO. 2 PORT

NO. 1 PORT

NO. 4 STB

NO. 3 STB

NO. 2 STB

NO. 1 STB

NO. 3 CARGO TANK
3459.49 BBLS.

NO. 2 CARGO TANK
3476.47 BBLS.

NO. 1 CARGO TANK
3765.93 BBLS.

NOTE 1

NOTE 1

RAISED TRUNK →

← RAISED TRUNK

SPOOL PIECE

FUEL TANK

PUMP ENGINE

SEE BURP LINE
DETAIL

BURP LINE
DETAIL

EMS

STERN

BOW

STARBOARD

NOTE 1: CONTAINMENT P/S

NO	DESCRIPTION	NO	DESCRIPTION
1C	CARGO TANK VALVE	11C	BLEED OFF VALVE
2C	LOAD VALVE	16C	DISCHARGE PRESSURE GAUGE
3C	MASTER SUCTION VALVE	19C	CARGO HEADER
4C	DISCHARGE VALVE	30C	CARGO PIPELINE
5C	HEADER VALVE	36C	PRESSURE GAUGE
8C	RELIEF VALVE	37C	CARGO DROP
9C	CHECK VALVE	—	— ABOVE DECK PIPING
10C	BURP VALVE	---	--- BELOW DECK PIPING

TRINITY MARINE PRODUCTS – BARREL CAPACITY=10702

KIRBY INLAND MARINE 

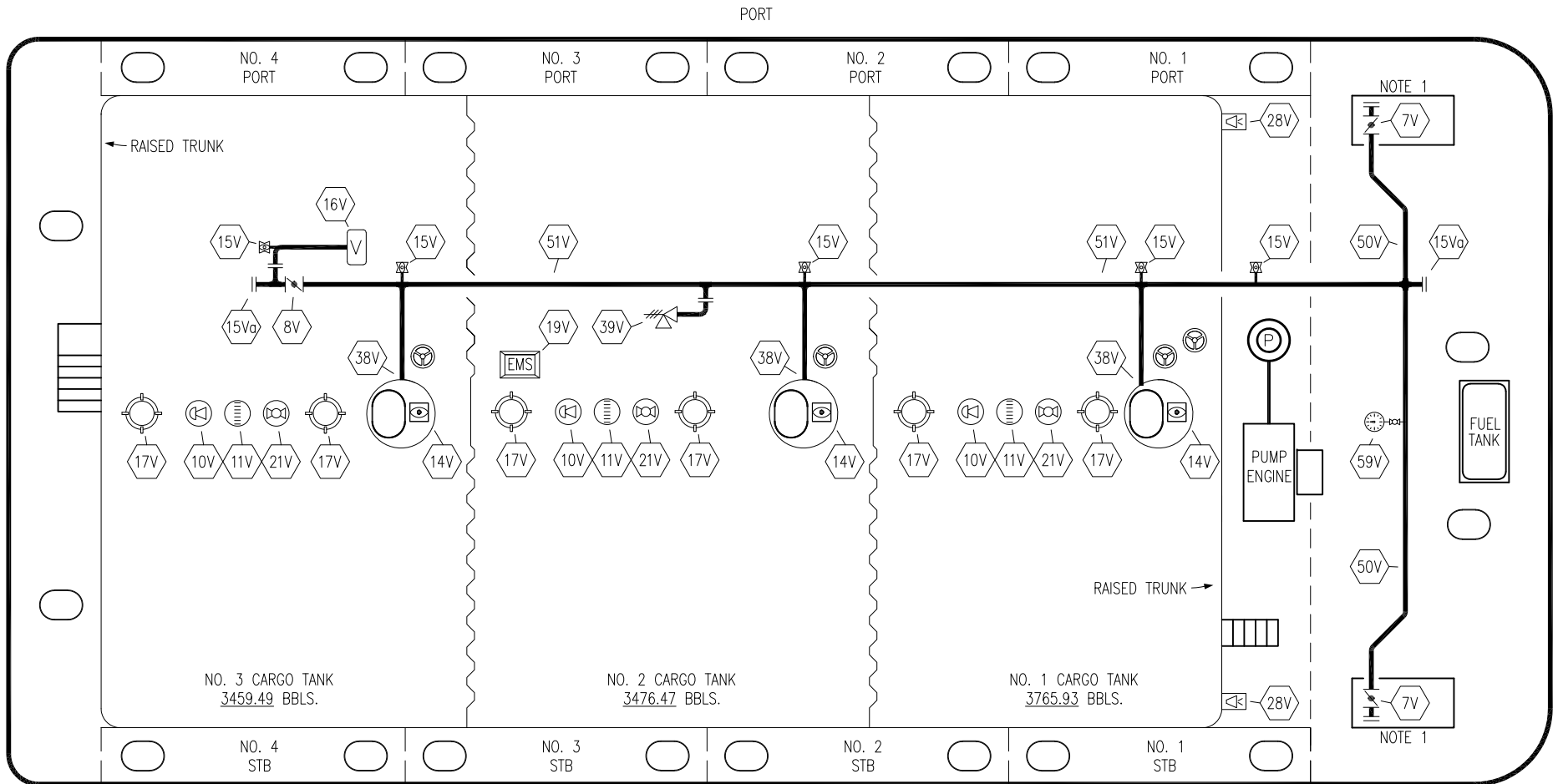
**CARGO
PIPING FLOW DIAGRAM**

REV.	DATE	BY	CHK	APP	REVISION DESCRIPTION
2	08/20/22	MRV	DDA	LEP	REVISED PER CLIENT COMMENTS
1	08/10/17	WFB	DDA		REMOVED 6C SALVAGE VALVE
0	04/24/12	DCB	DDA		FOR APPROVAL

SCALE: NONE
PAGE: 1 OF 3

KIRBY 10541

REV. **2**



NOTE 1

NOTE 1

STERN

BOW

STARBOARD

NOTE 1: CONTAINMENT P/S

TRINITY MARINE PRODUCTS - BARREL CAPACITY=10702

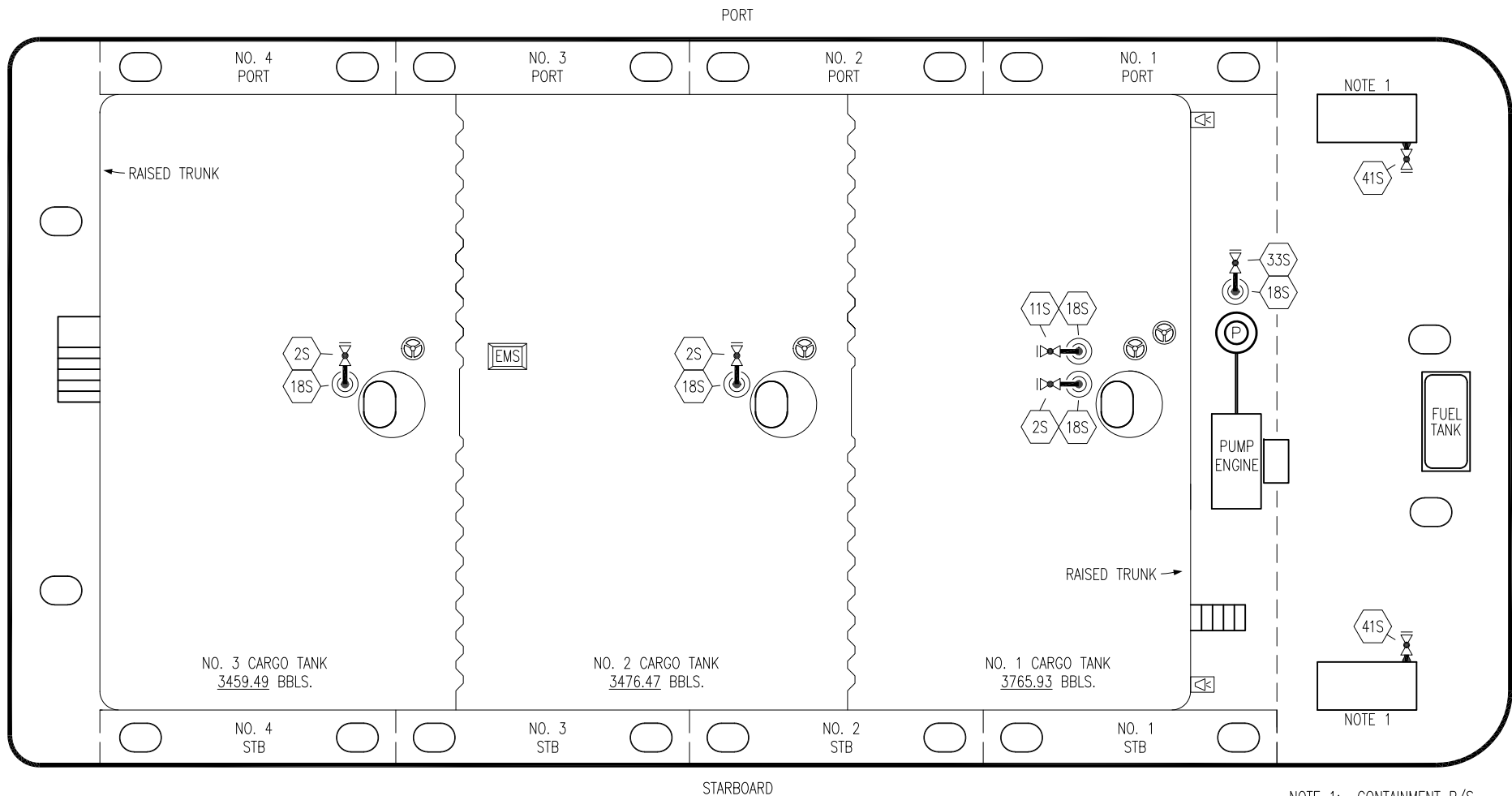
NO	DESCRIPTION	NO	DESCRIPTION
7V	HEADER VALVE	19V	EMERGENCY ENGINE SHUT DOWN
8V	VENT STACK VALVE	21V	HERMETIC GAUGE
10V	HIGH LEVEL/OVERFILL ALARM	28V	DOCK CONNECTION ALARM
11V	GAUGE STICK	39V	PRESSURE/VACUUM VALVE
14V	SIGHT GLASS W/GAUGE TREE	38V	VAPOR PENETRATION
15V	INSPECTION PORT	50V	VAPOR HEADER
15Va	INSPECTION PORT	51V	VAPOR PIPELINE
16V	VAPOR VENT STACK	59V	PRESS/VAC GAUGE
17V	BUTTERWORTH		
			— ABOVE DECK PIPING

REV.	DATE	BY	CHK	APP	REVISION DESCRIPTION
1	08/20/22	MRV	DDA	LEP	REVISED PER CLINET COMMENTS
0	04/24/12	DCB	DDA		FOR APPROVAL

KIRBY INLAND MARINE

VAPOR
PIPING FLOW DIAGRAM

SCALE: NONE	REV. 1
PAGE: 2 OF 3	KIRBY 10541



NOTE 1: CONTAINMENT P/S

NO	DESCRIPTION
2S	CARGO SUMP SUCTION VALVE
11S	LOWER CARGO PIPELINE SUCTION VALVE
18S	STRIPPING DROP
33S	PUMP WELL SUCTION VALVE
41S	CONTAINMENT DRAIN VALVE W/ CAP

TRINITY MARINE PRODUCTS – BARREL CAPACITY=10702

						KIRBY INLAND MARINE	
						STRIPPING	
						PIPING FLOW DIAGRAM	
1	08/20/22	MRV	DDA	LEP	REVISED PER CLIENT COMMENTS		
0	04/24/12	DCB	DDA		FOR APPROVAL		
REV.	DATE	BY	CHK	APP	REVISION DESCRIPTION	SCALE: NONE	KIRBY 10541
						PAGE: 3 OF 3	
							REV. 1