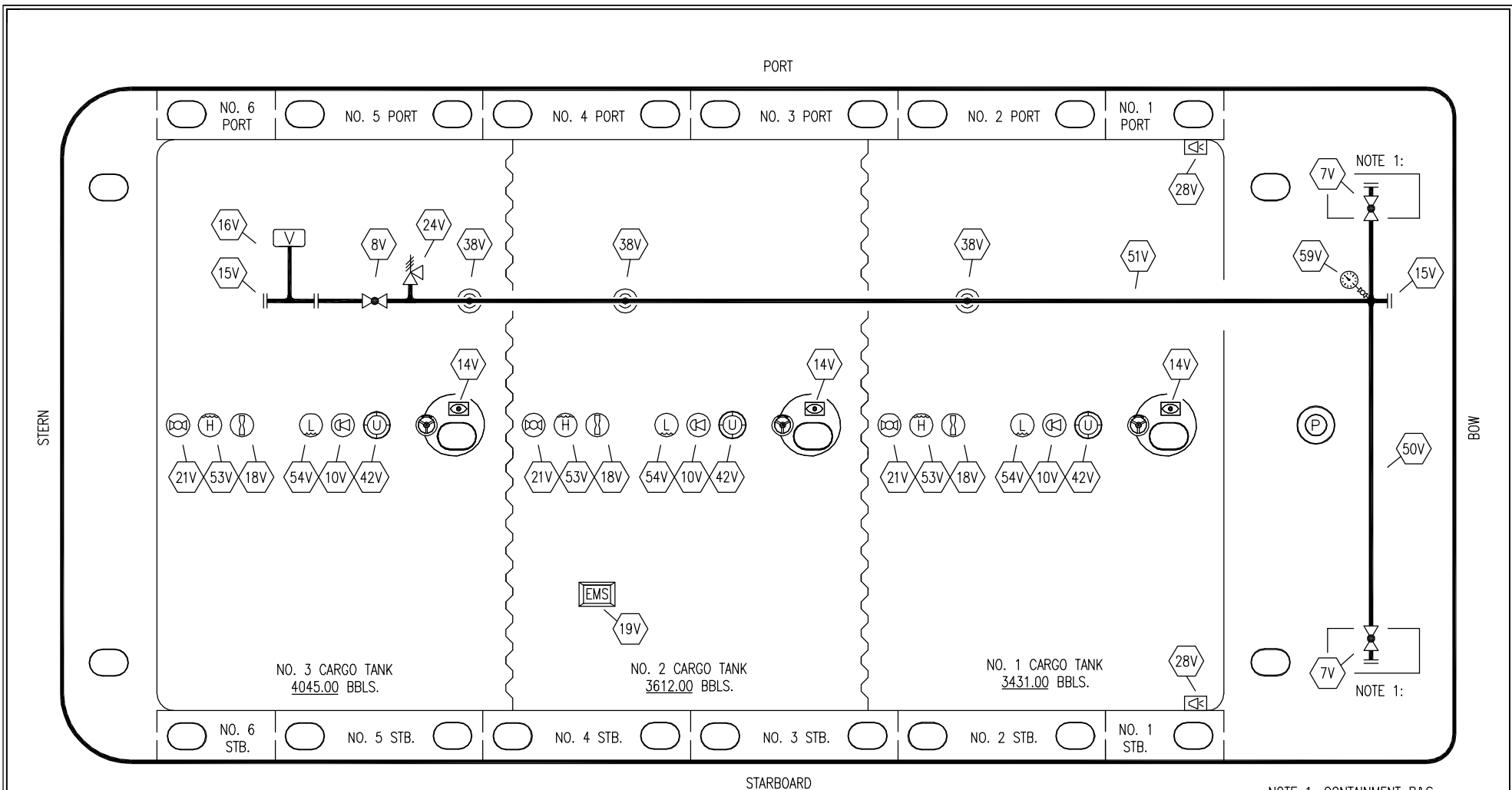


<b>NO</b>	<b>DESCRIPTION</b>	<b>NO</b>	<b>DESCRIPTION</b>
1C	CARGO TANK VALVE	15C	BYPASS VALVE
2C	LOAD VALVE	19C	CARGO HEADER
3C	MASTER SUCTION VALVE	30C	CARGO PIPELINE
4C	DISCHARGE VALVE	36C	PRESSURE GAUGE
5C	HEADER VALVE	37C	CARGO DROP
6C	SALVAGE VALVE		ABOVE DECK PIPING
9C	CHECK VALVE		BELOW DECK PIPING
10C	BURP VALVE		
11C	BLEED OFF VALVE		
12C	BURP VALVE RETURN TO CARGO TANK		

ST. LOUIS SHIPYARD - EX: WBC 26

<b>KIRBY INLAND MARINE</b>						<b>CARGO</b> <b>PIPING FLOW DIAGRAM</b>	
0	05/15/09	LT	RB	OF	APPROVED	SCALE: NONE	REV. 0
REV.	DATE	BY	CHK	APP	REVISION DESCRIPTION	PAGE: 1 OF 3	KIRBY 10526



NOTE 1: CONTAINMENT P&S

NO	DESCRIPTION	NO	DESCRIPTION
7V	8" HEADER VALVE	28V	DOCK CONNECTION ALARM
8V	8" VENT STACK VALVE	38V	8" VAPOR PENETRATIONS
10V	HIGH LEVEL/OVERFILL ALARM	42V	8" ULLAGE
14V	5"X11" SIGHT GLASS W/GAUGE TREE	50V	VAPOR HEADER
15V	INSPECTION PORT	51V	VAPOR PIPELINE
16V	8" VAPOR VENT STACK	53V	HIGH LEVEL STICK
18V	2" RESTRICTIVE GAUGE TUBE	54V	LOW LEVEL STICK
19V	EMERGENCY SHUTDOWN SYSTEM	59V	PRESS/VAC GAUGE
21V	2" HERMETIC GAUGE		
24V	PRES/VAC RELIEF VALVE		
	ABOVE DECK PIPING		

ST. LOUIS SHIPYARD - EX: WBC 26

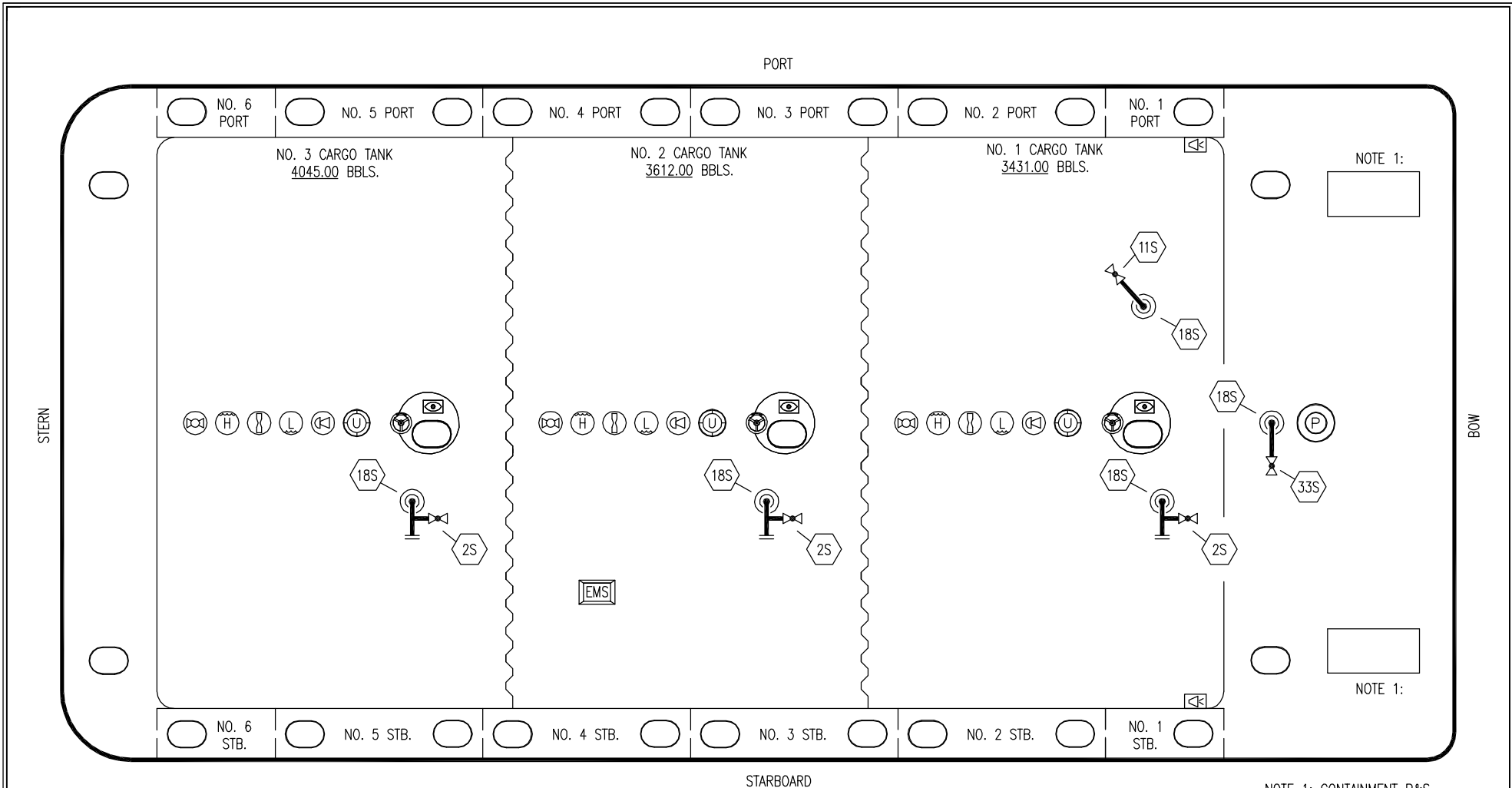
**KIRBY INLAND MARINE**

**VAPOR PIPING FLOW DIAGRAM**

REV.	DATE	BY	CHK	APP	REVISION DESCRIPTION
0	05/15/09	LT	RB	OF	APPROVED

SCALE: NONE  
PAGE: 2 OF 3

**KIRBY 10526** REV. **0**



NOTE 1:

NOTE 1:

NOTE 1: CONTAINMENT P&S

- | NO  | DESCRIPTION                           |
|-----|---------------------------------------|
| 2S  | 2" CARGO SUMP SUCTION VALVE           |
| 11S | 2" LOWER CARGO PIPELINE SUCTION VALVE |
| 18S | STRIPPING DROP                        |
| 33S | 2" PUMP WELL SUCTION                  |
|     | ABOVE DECK PIPING                     |

ST. LOUIS SHIPYARD - EX: WBC 26

						<b>KIRBY INLAND MARINE</b>	
0	05/15/09	LT	RB	OF	APPROVED	SCALE:	NONE
REV.	DATE	BY	CHK	APP	REVISION DESCRIPTION	PAGE:	3 OF 3
						<b>KIRBY 10526</b>	
						REV.	<b>0</b>