

- | | | | |
|-----------|----------------------|-----------|---------------------------------|
| NO | DESCRIPTION | NO | DESCRIPTION |
| 1C | CARGO TANK VALVE | 11C | BLEED OFF VALVE |
| 2C | LOAD VALVE | 12C | BURP VALVE RETURN TO CARGO TANK |
| 3C | MASTER SUCTION VALVE | 15C | BYPASS VALVE |
| 4C | DISCHARGE VALVE | 16C | DISCHARGE PRESSURE GAUGE |
| 5C | HEADER VALVE | 19C | CARGO HEADER |
| 8C | RELIEF VALVE | 30C | CARGO PIPELINE |
| 9C | CHECK VALVE | 37C | CARGO DROP |
| 10C | BURP VALVE | | |
| | | — | ABOVE DECK PIPING |
| | | - - - | BELOW DECK PIPING |

| | | | | | |
|------|----------|-----|-----|-----|-----------------------------|
| 1 | 06/21/17 | WFB | DDA | | REVISED PER CLIENT COMMENTS |
| 0 | 08/03/09 | LT | RB | OF | APPROVED |
| REV. | DATE | BY | CHK | APP | REVISION DESCRIPTION |

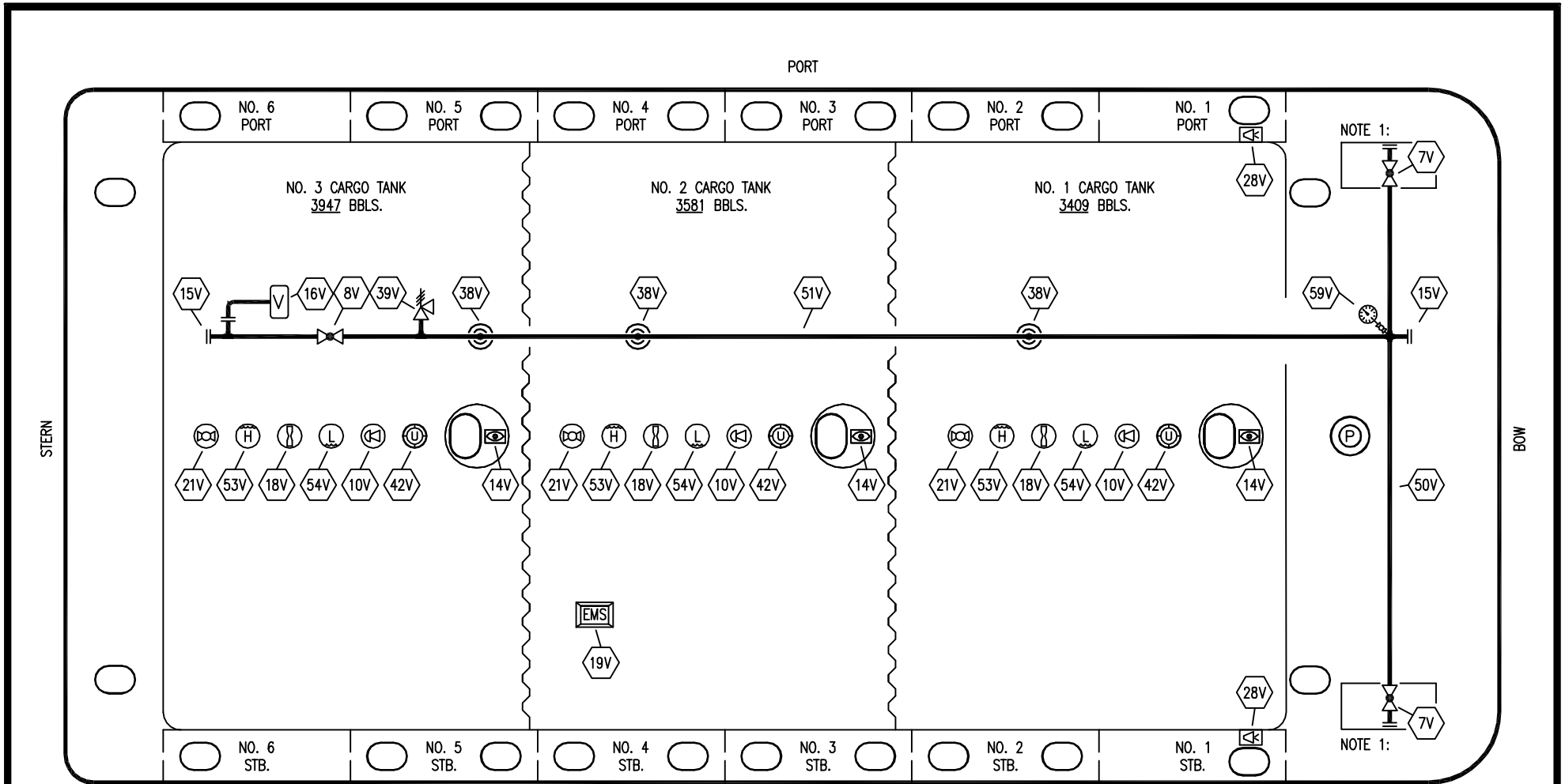
CARUTHERSVILLE SHIPYARD – EX: WBC 25

KIRBY INLAND MARINE

CARGO

PIPING FLOW DIAGRAM

| | |
|--------------|--------------------|
| SCALE: NONE | KIRBY 10525 |
| PAGE: 1 OF 3 | REV. 1 |



NOTE 1:


NOTE 1:

STARBOARD

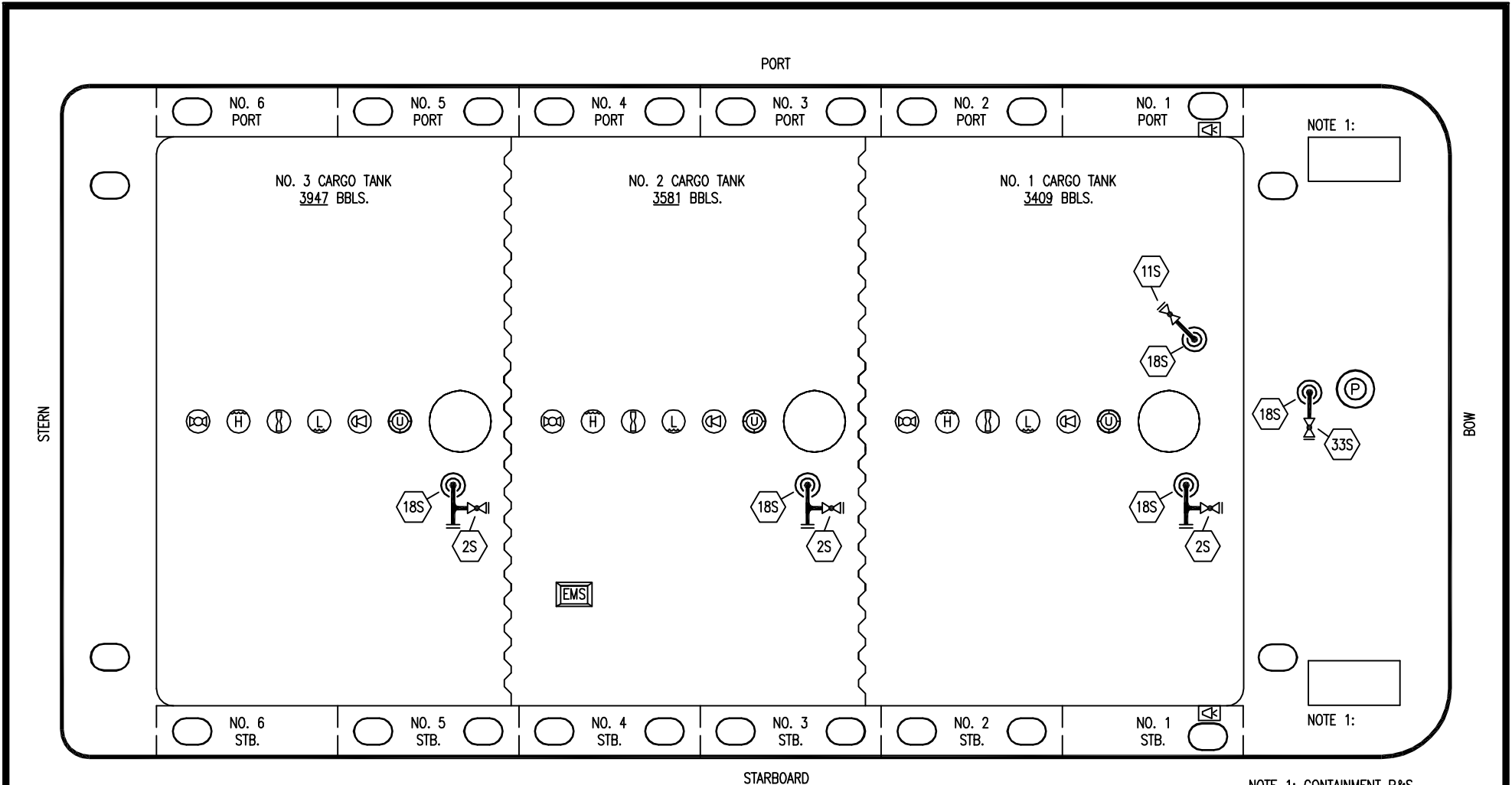
NOTE 1: CONTAINMENT P&S

- | | | | |
|-----|----------------------------------|-----|------------------------------|
| NO | DESCRIPTION | NO | DESCRIPTION |
| 7V | 8" HEADER VALVE | 38V | 8" VAPOR PENETRATION ☉ |
| 8V | 8" VENT STACK VALVE | 39V | PRESSURE/VACUUM RELIEF VALVE |
| 10V | HIGH LEVEL/OVERFILL ALARM | 42V | 8" ULLAGE HATCH |
| 14V | 5"x 11" SIGHT GLASS W/GAUGE TREE | 50V | 8" VAPOR HEADER |
| 15V | INSPECTION PORT | 51V | 8" VAPOR PIPELINE |
| 16V | 8" VAPOR VENT STACK | 53V | HIGH LEVEL GAUGE |
| 18V | 2" RESTRICTIVE GAUGE TUBE | 54V | LOW LEVEL GAUGE |
| 19V | EMERGENCY SHUTDOWN SYSTEM | 59V | PRESS/VAC GAUGE |
| 21V | 2" HERMETIC GAUGE | — | ABOVE DECK PIPING |
| 28V | DOCK CONNECTION ALARM | | |

CARUTHERSVILLE SHIPYARD - EX: WBC 25

| | | | |
|-------------------------------------------------------------------------------------------------------------------------|--|-------------------------------------------------------|--|
| <p>KIRBY INLAND MARINE</p>  | | <p>VAPOR</p> <p>PIPING FLOW DIAGRAM</p> | |
| | | | |
| <p>0 08/03/09 LT RB OF APPROVED</p> | | <p>SCALE: NONE</p> | |
| <p>REV. DATE BY CHK APP REVISION DESCRIPTION</p> | | <p>PAGE: 2 OF 3</p> | |

REV. 0



NOTE 1:

NOTE 1:

STARBOARD

NOTE 1: CONTAINMENT P&S

- NO DESCRIPTION
- 2S CARGO SUMP SUCTION VALVE
- 11S LOWER CARGO PIPELINE SUCTION VALVE
- 18S STRIPPING DROP
- 33S PUMP WELL SUCTION VALVE
- ABOVE DECK PIPING

CARUTHERSVILLE SHIPYARD - EX: WBC 25

| | | | | | | |
|---------------------------------------------------------------------------------------|----------|----|-----|-----|----------------------|--------------------------------------------------------------------|
| <h1 style="margin: 0;">KIRBY INLAND MARINE</h1> | | | | | | |
| <h2 style="margin: 0;">STRIPPING</h2> <h3 style="margin: 0;">PIPING FLOW DIAGRAM</h3> | | | | | | |
| 0 | 08/03/09 | LT | RB | OF | APPROVED | SCALE: NONE |
| REV. | DATE | BY | CHK | APP | REVISION DESCRIPTION | PAGE: 3 OF 3 |
| KIRBY 10525 | | | | | | REV. 0 |