


NO	DESCRIPTION	NO	DESCRIPTION
1C	CARGO TANK VALVE	15C	BYPASS VALVE
2C	LOAD VALVE	19C	CARGO HEADER
3C	MASTER SUCTION VALVE	30C	CARGO PIPELINE
4C	DISCHARGE VALVE	36C	PRESSURE GAUGE
5C	HEADER VALVE	37C	CARGO DROP
6C	SALVAGE VALVE	—	— ABOVE DECK PIPING
9C	CHECK VALVE	---	--- BELOW DECK PIPING
10C	BURP VALVE		
12C	BURP VALVE RETURN TO CARGO TANK		

CARUTHERSVILLE SHIPYARD -- EX: DC 731

REV.	DATE	BY	CHK	APP	REVISION DESCRIPTION
1	09/23/21	MRV	DDA	JF	REVISED PER CLIENT COMMENTS
0	06/29/09	LT	RB	OF	APPROVED



KIRBY INLAND MARINE

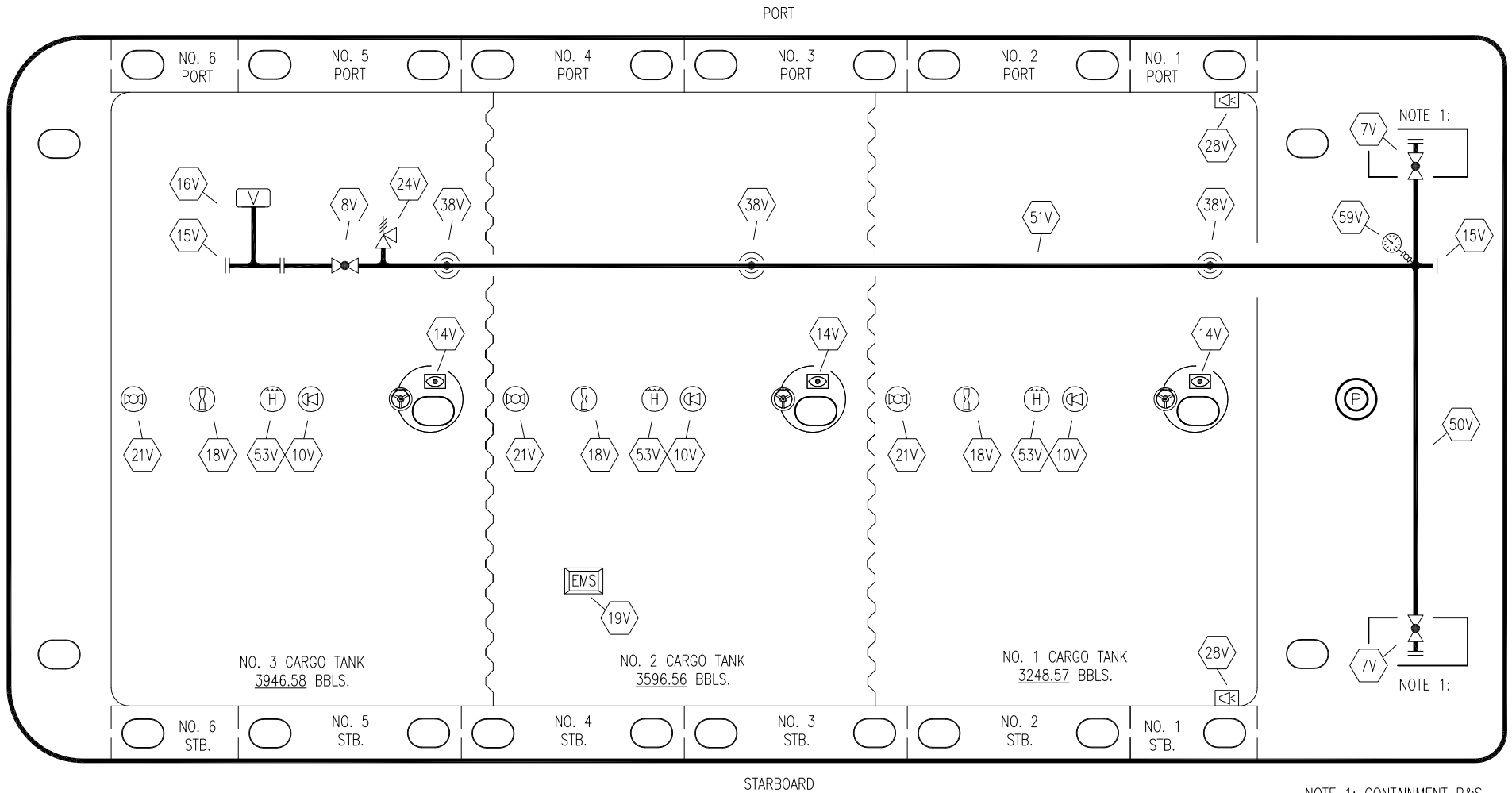
CARGO PIPING FLOW DIAGRAM

KIRBY 10502

SCALE: NONE
PAGE: 1 OF 3

REV. **1**

NOTE 1: CONTAINMENT P&S



NOTE 1: CONTAINMENT P&S

- | | | | |
|-----|---------------------------------|-----|---------------------------|
| NO | DESCRIPTION | NO | DESCRIPTION |
| 7V | 8" HEADER VALVE | 24V | PRES/VAC RELIEF VALVE |
| 8V | 8" VENT STACK VALVE | 28V | DOCK CONNECTION ALARM |
| 10V | HIGH LEVEL/OVERFILL ALARM | 38V | 8" VAPOR PENETRATIONS (⊙) |
| 14V | 5"X11" SIGHT GLASS W/GAUGE TREE | 50V | VAPOR HEADER |
| 15V | INSPECTION PORT | 51V | VAPOR PIPELINE |
| 16V | 8" VAPOR VENT STACK | 53V | HIGH LEVEL STICK |
| 18V | 2" RESTRICTIVE GAUGE TUBE | 59V | PRESS/VAC GAUGE |
| 19V | EMERGENCY SHUTDOWN SYSTEM | — | ABOVE DECK PIPING |
| 21V | 2" HERMETIC GAUGE | | |

CARUTHERSVILLE SHIPYARD -- EX: DC 731

REV.	DATE	BY	CHK	APP	REVISION DESCRIPTION
1	09/23/21	MRV	DDA	JF	REVISED PER CLIENT COMMENTS
0	06/29/09	LT	RB	OF	APPROVED

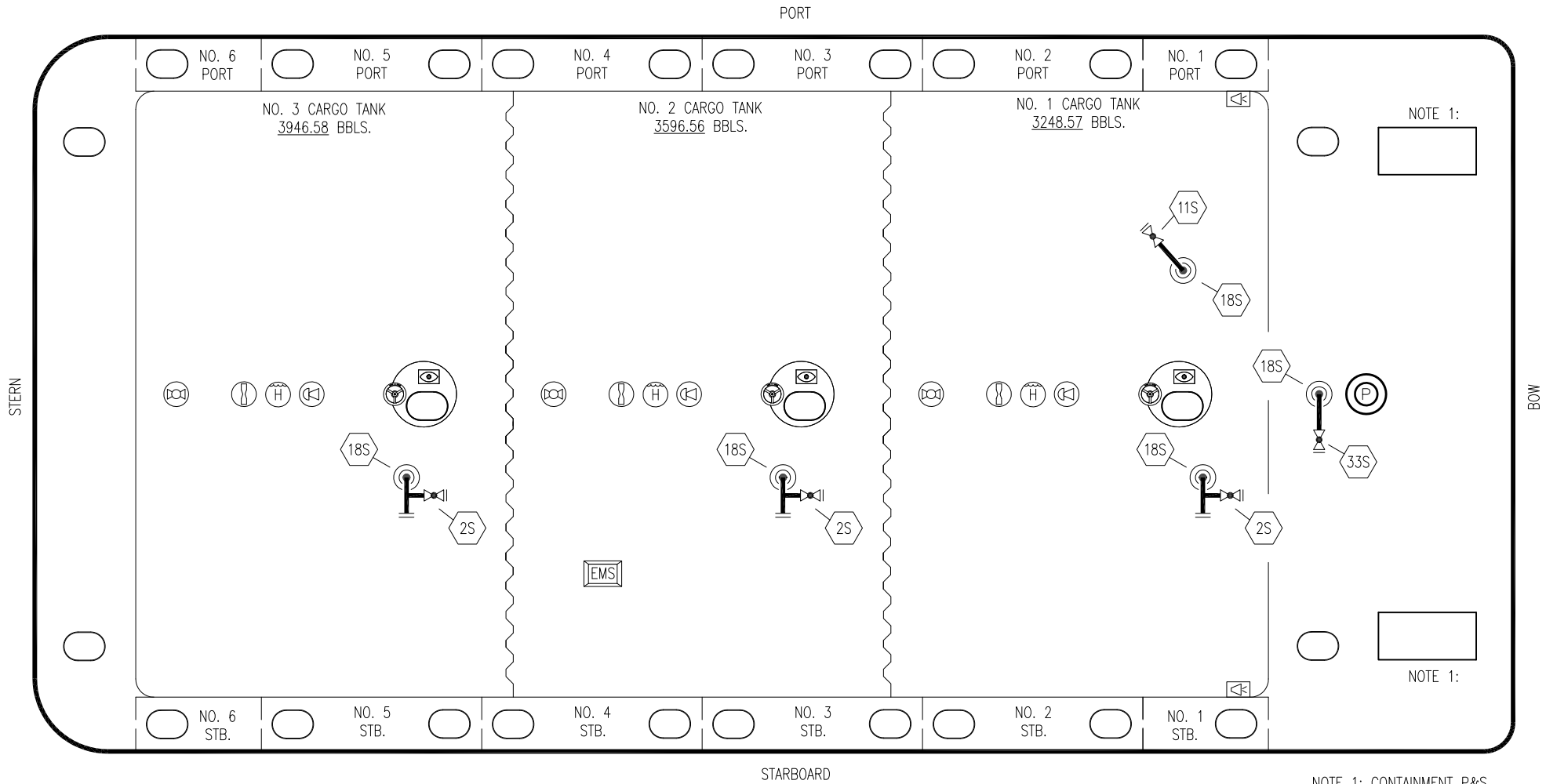
KIRBY INLAND MARINE 

**VAPOR
PIPING FLOW DIAGRAM**

SCALE: NONE
PAGE: 2 OF 3

KIRBY 10502

REV. **1**



NOTE 1:

NOTE 1:

NOTE 1: CONTAINMENT P&S

- | NO | DESCRIPTION |
|-----|---------------------------------------|
| 2S | 2" CARGO SUMP SUCTION VALVE |
| 11S | 2" LOWER CARGO PIPELINE SUCTION VALVE |
| 18S | STRIPPING DROP |
| 33S | 2" PUMP WELL SUCTION |
| | ABOVE DECK PIPING |

CARUTHERSVILLE SHIPYARD -- EX: DC 731

REV.	DATE	BY	CHK	APP	REVISION DESCRIPTION
1	09/23/21	MRV	DDA	JF	REVISED PER CLIENT COMMENTS
0	06/29/09	LT	RB	OF	APPROVED

STRIPPING PIPING FLOW DIAGRAM	
SCALE: NONE	KIRBY 10502
PAGE: 3 OF 3	
	REV. 1