

TRINITY MARINE



KIRBY INLAND MARINE

CARGO

PIPING FLOW DIAGRAM

REV. **0**

KIRBY 10444

SCALE: NONE
PAGE: 1 OF 3

STARBOARD

| NO | DESCRIPTION | NO | DESCRIPTION |
|-----|--------------------------|-----|------------------------------------|
| 1C | 8" CARGO TANK VALVE | 12C | 1" BURP VALVE RETURN TO CARGO TANK |
| 2C | 8" LOAD VALVE | 16C | DISCHARGE PRESSURE GAUGE |
| 3C | 10" MASTER SUCTION VALVE | 19C | 8" CARGO HEADER |
| 4C | 8" DISCHARGE VALVE | 24C | 1" PIPE SIGHT GLASS |
| 5C | 8" HEADER VALVE | 30C | 10" CARGO PIPELINE |
| 6C | 8" SALVAGE VALVE | 36C | PRESSURE GAUGE |
| 8C | 6" RELIEF VALVE | 37C | CARGO DROP |
| 9C | 8" CHECK VALVE | — | ABOVE DECK PIPING |
| 10C | 1" BURP VALVE | --- | BELOW DECK PIPING |
| 11C | 1" BLEED OFF VALVE | | |

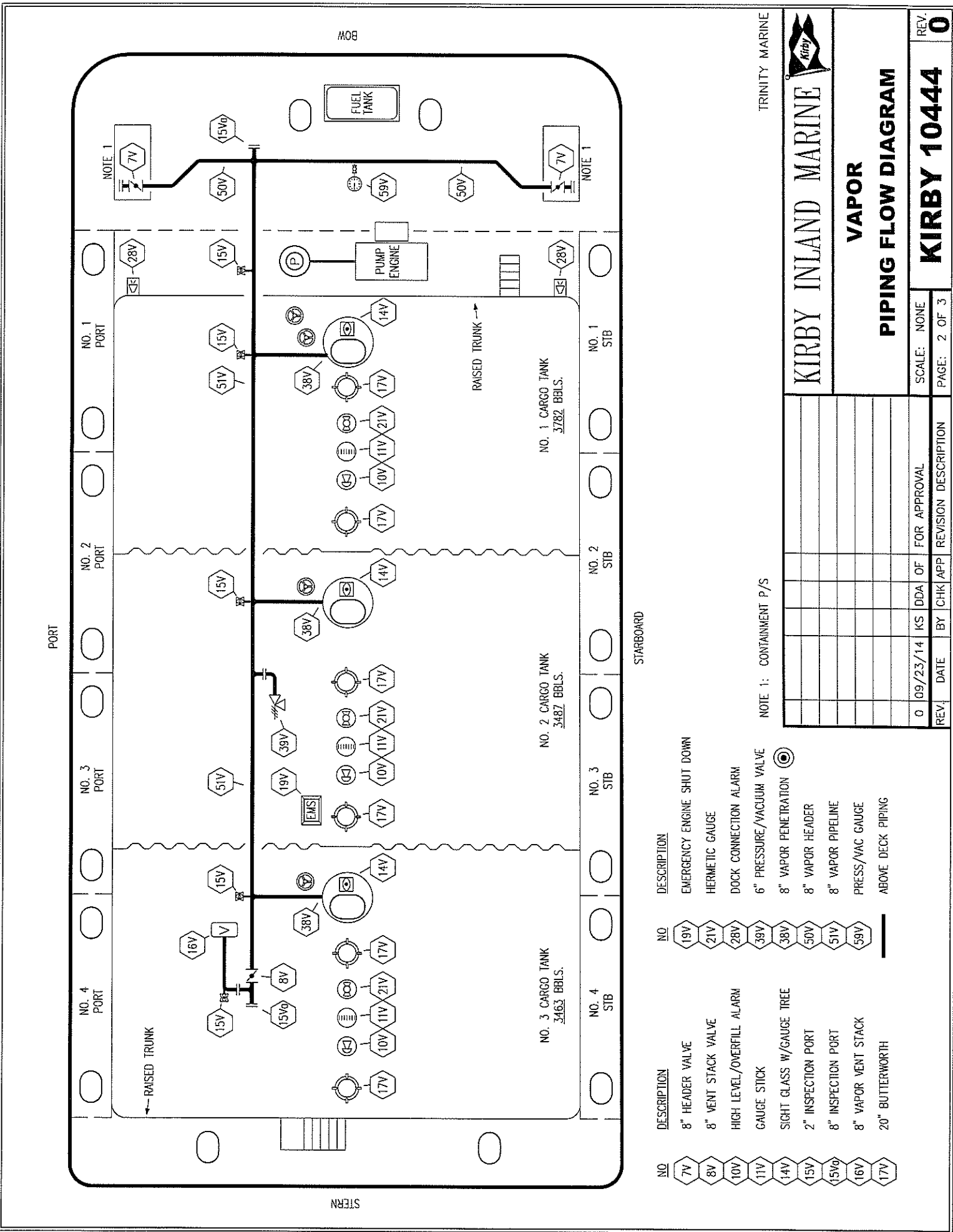
NOTE 1: CONTAINMENT P/S

| REV | DATE | BY | CHK | APP | REVISION DESCRIPTION |
|-----|----------|----|-----|-----|----------------------|
| 0 | 09/23/14 | KS | DDA | OF | FOR APPROVAL |

PORT

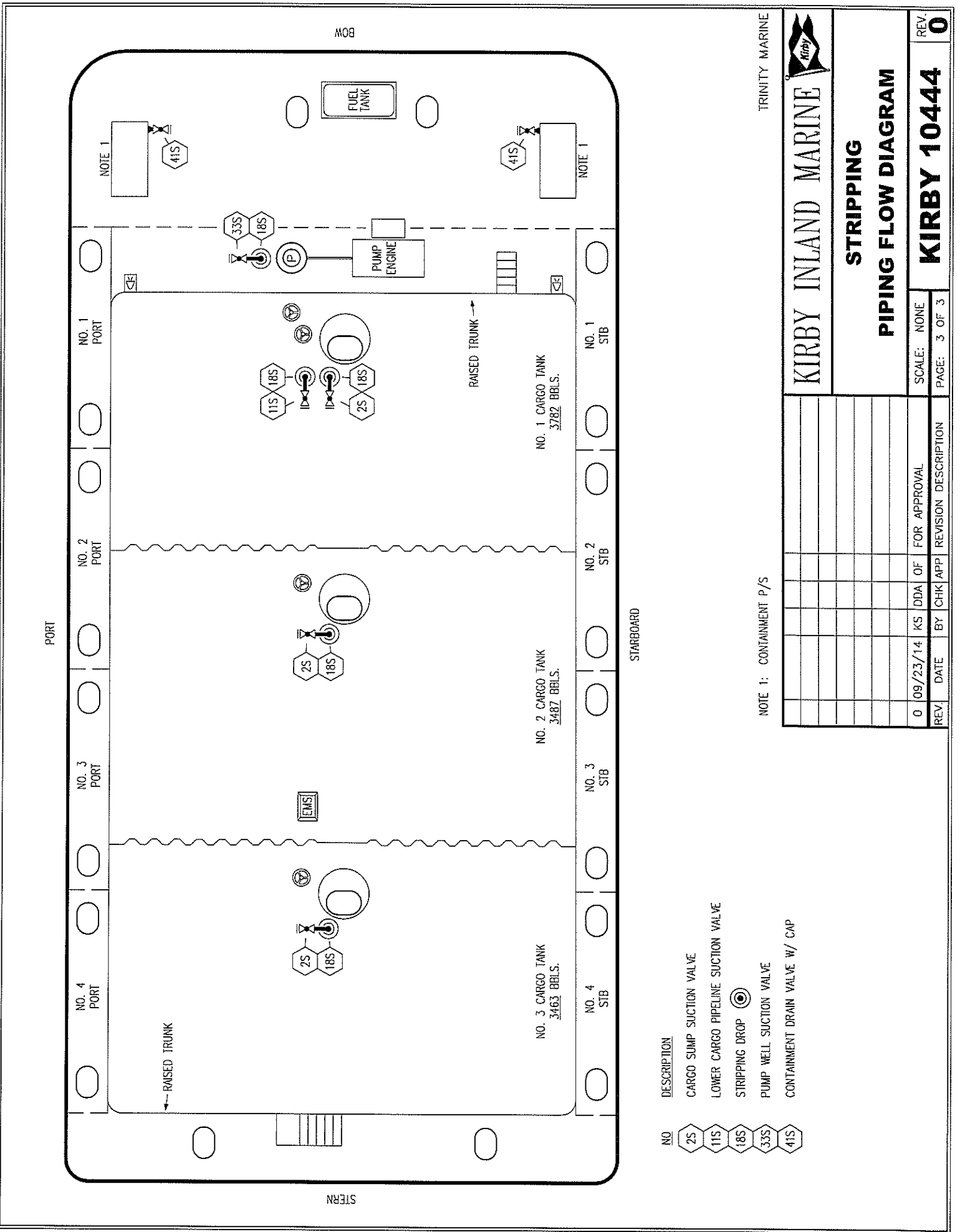
STERN

BOW



| NO | DESCRIPTION |
|------------------|----------------------------|
| 7V | 8" HEADER VALVE |
| 8V | 8" VENT STACK VALVE |
| 10V | HIGH LEVEL/OVERFILL ALARM |
| 11V | GAUGE STICK |
| 14V | SIGHT GLASS W/GAUGE TREE |
| 15V | 2" INSPECTION PORT |
| 15V ₀ | 8" INSPECTION PORT |
| 16V | 8" VAPOR VENT STACK |
| 17V | 20" BUTTERWORTH |
| 19V | EMERGENCY ENGINE SHUT DOWN |
| 21V | HERMETIC GAUGE |
| 28V | DOCK CONNECTION ALARM |
| 39V | 6" PRESSURE/VACUUM VALVE |
| 38V | 8" VAPOR PENETRATION |
| 50V | 8" VAPOR HEADER |
| 51V | 8" VAPOR PIPELINE |
| 59V | PRESS/VAC GAUGE |
| | ABOVE DECK PIPING |

| REV. | DATE | BY | CHK APP | DDA OF | FOR APPROVAL | REVISION DESCRIPTION |
|------|----------|----|---------|--------|--------------|----------------------|
| 0 | 09/23/14 | KS | | | | |



PORT

NO. 1 PORT

NO. 2 PORT

NO. 3 PORT

NO. 4 PORT

NO. 1 STB

NO. 2 STB

NO. 3 STB

NO. 4 STB

← RAISED TRUNK

RAISED TRUNK →

NO. 1 CARGO TANK
3782 BBL.S.

NO. 2 CARGO TANK
3487 BBL.S.

NO. 3 CARGO TANK
3463 BBL.S.

NO. 4 CARGO TANK
3463 BBL.S.

STERN


BOW

STARBOARD

- NO. 2S CARGO SUMP SUCTION VALVE
- NO. 11S LOWER CARGO PIPELINE SUCTION VALVE
- NO. 18S STRIPPING DROP
- NO. 33S PUMP WELL SUCTION VALVE
- NO. 41S CONTAINMENT DRAIN VALVE W/ CAP

NOTE 1: CONTAINMENT P/S

TRINITY MARINE



KIRBY INLAND MARINE

STRIPPING
PIPING FLOW DIAGRAM

| REV. | DATE | BY | CHK APP | REVISION DESCRIPTION |
|------|----------|----|---------|----------------------|
| 0 | 09/23/14 | KS | DDA | OF FOR APPROVAL |
| | | | | |
| | | | | |
| | | | | |
| | | | | |
| | | | | |
| | | | | |
| | | | | |
| | | | | |
| | | | | |

SCALE: NONE
PAGE: 3 OF 3

REV. **0**
KIRBY 10444