

STERN

PORT

STARBOARD

TRINITY MARINE



KIRBY INLAND MARINE

CARGO

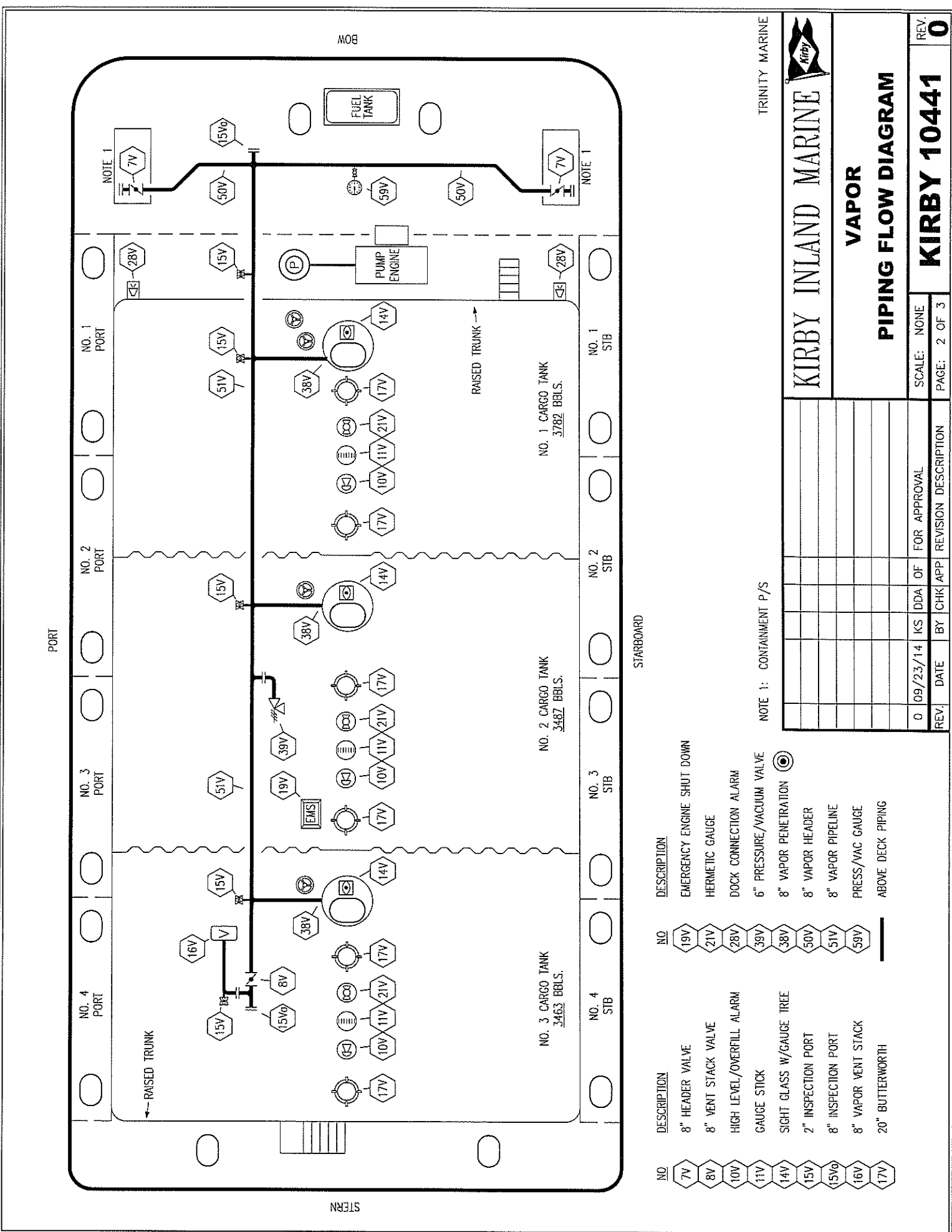
PIPING FLOW DIAGRAM

SCALE: NONE
PAGE: 1 OF 3
REV. 0

NOTE 1: CONTAINMENT P/S

NO	DESCRIPTION	NO	DESCRIPTION
1C	8" CARGO TANK VALVE	12C	1" BURP VALVE RETURN TO CARGO TANK
2C	8" LOAD VALVE	16C	DISCHARGE PRESSURE GAUGE
3C	10" MASTER SUCTION VALVE	19C	8" CARGO HEADER
4C	8" DISCHARGE VALVE	24C	1" PIPE SIGHT GLASS
5C	8" HEADER VALVE	30C	10" CARGO PIPELINE
6C	8" SALVAGE VALVE	36C	PRESSURE GAUGE
8C	6" RELIEF VALVE	37C	CARGO DROP
9C	8" CHECK VALVE		— ABOVE DECK PIPING
10C	1" BURP VALVE		--- BELOW DECK PIPING
11C	1" BLEED OFF VALVE		

REV	DATE	BY	CHK	APP	REVISION DESCRIPTION
0	09/23/14	KS	DDA	OF	FOR APPROVAL



TRINITY MARINE



KIRBY INLAND MARINE

VAPOR

PIPING FLOW DIAGRAM

REV.	DATE	BY	CHK	APP	REVISION DESCRIPTION
0	09/23/14	KS	DDA	OF	FOR APPROVAL
					SCALE: NONE
					PAGE: 2 OF 3

REV. 0

NO	DESCRIPTION	NO	DESCRIPTION
7V	8" HEADER VALVE	19V	EMERGENCY ENGINE SHUT DOWN
8V	8" VENT STACK VALVE	21V	HERMETIC GAUGE
10V	HIGH LEVEL/OVERFILL ALARM	28V	DOCK CONNECTION ALARM
11V	GAUGE STICK	39V	6" PRESSURE/VACUUM VALVE
14V	SIGHT GLASS W/GAUGE TREE	38V	8" VAPOR PENETRATION
15V	2" INSPECTION PORT	50V	8" VAPOR HEADER
15V ₀	8" INSPECTION PORT	51V	8" VAPOR PIPELINE
16V	8" VAPOR VENT STACK	59V	PRESS/MAC GAUGE
17V	20" BUTTERWORTH		ABOVE DECK PIPING

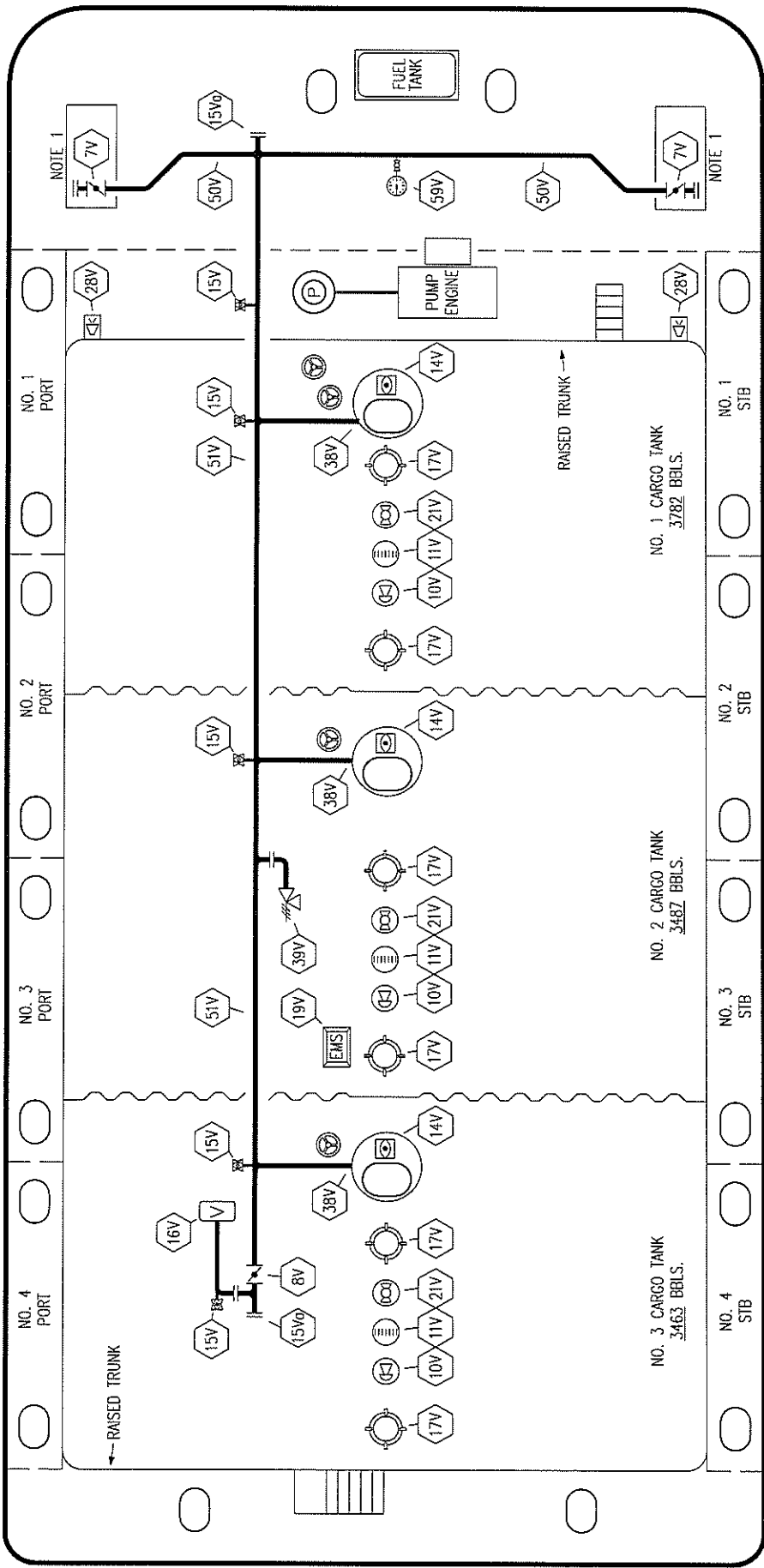
NOTE 1: CONTAINMENT P/S

STARBOARD

STERN

PORT

BOX



NOTE 1

NOTE 1

RAISED TRUNK

RAISED TRUNK

NO. 1 PORT

NO. 2 PORT

NO. 3 PORT

NO. 4 PORT

NO. 1 STB

NO. 2 STB

NO. 3 STB

NO. 4 STB

NO. 1 CARGO TANK
3782 BBLs.

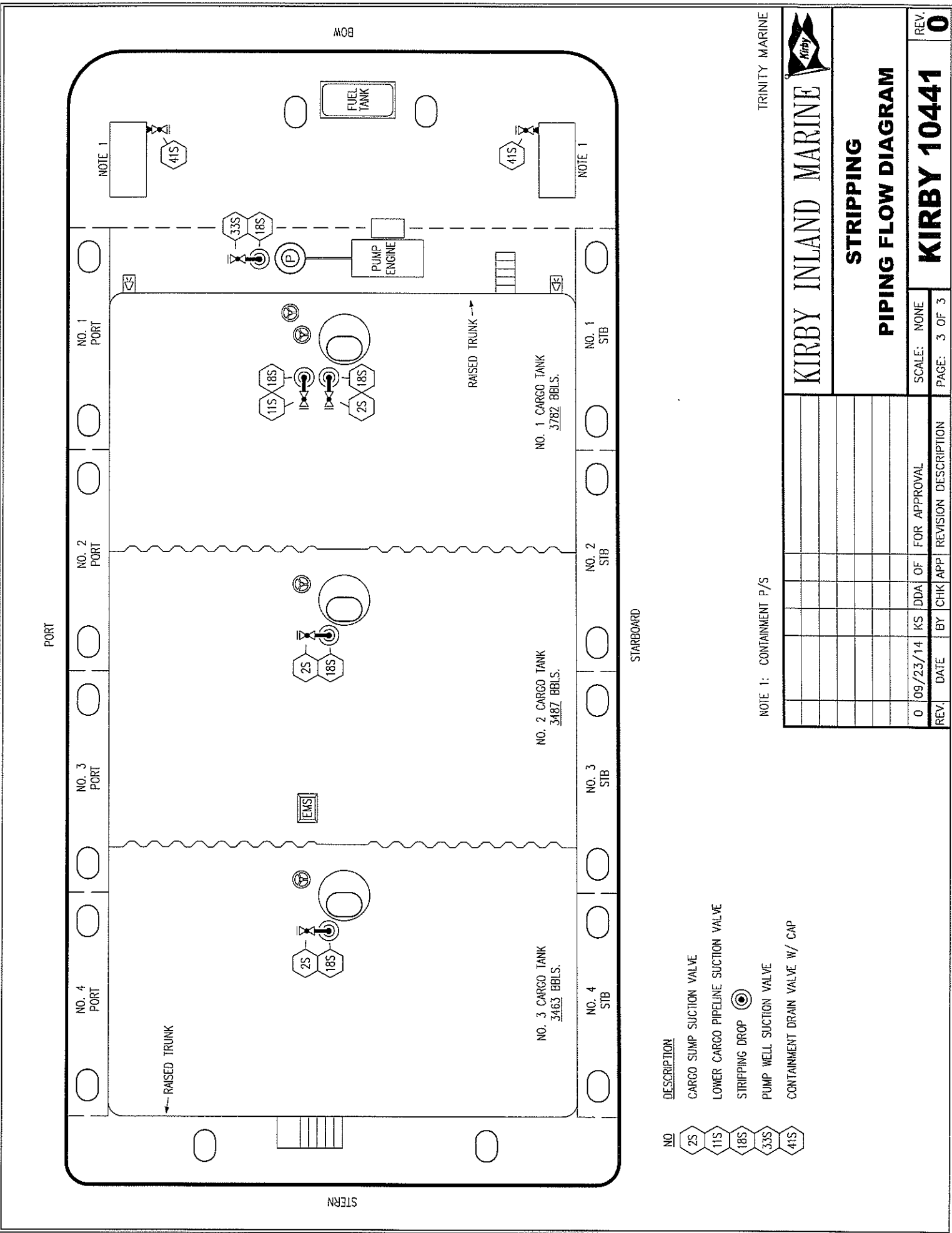
NO. 2 CARGO TANK
3487 BBLs.

NO. 3 CARGO TANK
3463 BBLs.

FUEL TANK

PUMP ENGINE

EMS



TRINITY MARINE



KIRBY INLAND MARINE

STRIPPING

PIPING FLOW DIAGRAM

SCALE: NONE
PAGE: 3 OF 3

REV	DATE	BY	CHK/APP	REVISION DESCRIPTION
0	09/23/14	KS	DDA	OF FOR APPROVAL

REV. **0**

NOTE 1: CONTAINMENT P/S

- NO. 2S 11S 18S 33S 41S
- DESCRIPTION
- CARGO SUMP SUCTION VALVE
 - LOWER CARGO PIPELINE SUCTION VALVE
 - STRIPPING DROP
 - PUMP WELL SUCTION VALVE
 - CONTAINMENT DRAIN VALVE W/ CAP