

TRINITY MARINE



KIRBY INLAND MARINE

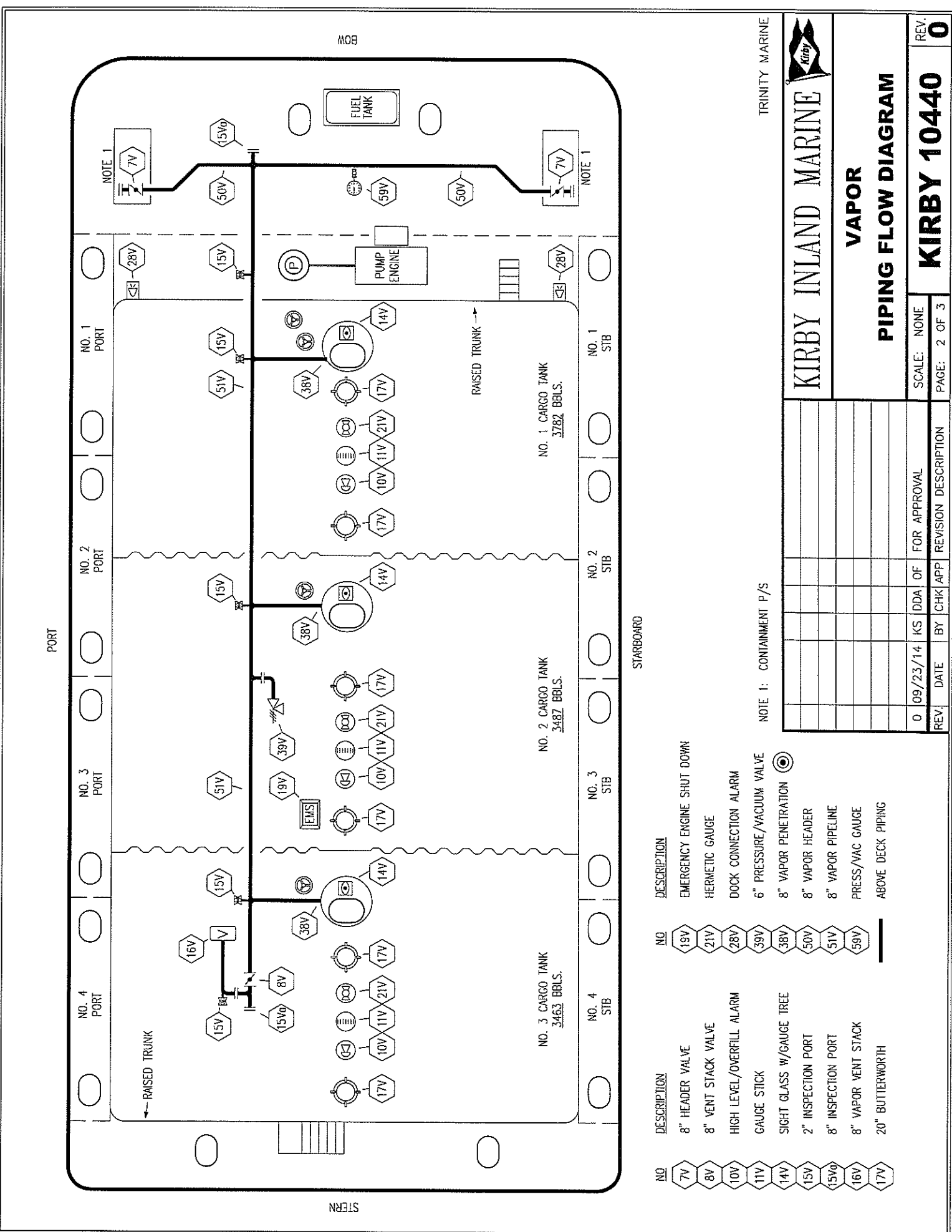
CARGO

PIPING FLOW DIAGRAM

REV.	0	DATE	09/23/14	BY	KS	APP	DDA	OF	FOR APPROVAL
SCALE:	NONE								
PAGE:	1 OF 3								

REV.	DATE	BY	CHK	APP	REVISION DESCRIPTION
0	09/23/14	KS	DDA	OF	FOR APPROVAL

KIRBY 10440



TRINITY MARINE



KIRBY INLAND MARINE

VAPOR

PIPING FLOW DIAGRAM

REV.	DATE	BY	CHK	APP	REVISION DESCRIPTION
0	09/23/14	KS	DDA	OF	FOR APPROVAL
					SCALE: NONE
					PAGE: 2 OF 3

REV. **0**

- | | | | |
|------------------|---------------------------|-----|----------------------------|
| NO | DESCRIPTION | NO | DESCRIPTION |
| 7V | 8" HEADER VALVE | 19V | EMERGENCY ENGINE SHUT DOWN |
| 8V | 8" VENT STACK VALVE | 21V | HERMETIC GAUGE |
| 10V | HIGH LEVEL/OVERFILL ALARM | 28V | DOCK CONNECTION ALARM |
| 11V | GAUGE STICK | 39V | 6" PRESSURE/VACUUM VALVE |
| 14V | SIGHT GLASS W/GAUGE TREE | 38V | 8" VAPOR PENETRATION |
| 15V | 2" INSPECTION PORT | 50V | 8" VAPOR HEADER |
| 15V ₀ | 8" INSPECTION PORT | 51V | 8" VAPOR PIPELINE |
| 16V | 8" VAPOR VENT STACK | 59V | PRESS/VAC GAUGE |
| 17V | 20" BUTTERWORTH | | ABOVE DECK PIPING |

NOTE 1: CONTAINMENT P/S

STARBOARD

PORT

STERN

BOW

