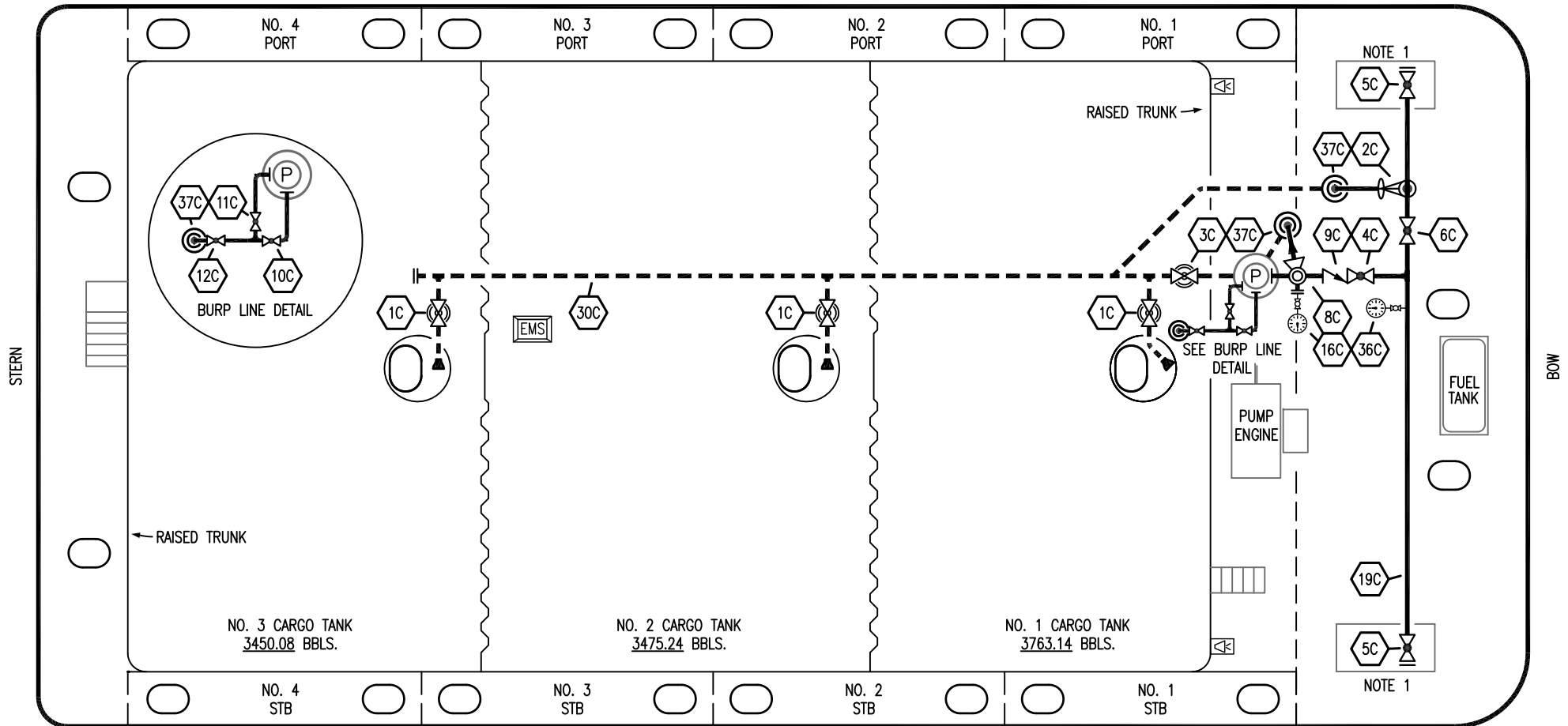


PORT



NO. 3 CARGO TANK  
3450.08 BBLS.

NO. 2 CARGO TANK  
3475.24 BBLS.

NO. 1 CARGO TANK  
3763.14 BBLS.

NOTE 1

NOTE 1

STERN

BOW

STARBOARD

NOTE 1: CONTAINMENT P/S

NO	DESCRIPTION	NO	DESCRIPTION
1C	8" CARGO TANK VALVE	12C	1" BURP VALVE RETURN TO CARGO TANK
2C	8" LOAD VALVE	16C	DISCHARGE PRESSURE GAUGE
3C	10" MASTER SUCTION VALVE	19C	8" CARGO HEADER
4C	8" DISCHARGE VALVE	24C	1" PIPE SIGHT GLASS
5C	8" HEADER VALVE	36C	PRESSURE GAUGE
6C	8" SALVAGE VALVE	37C	CARGO DROP
8C	6" RELIEF VALVE		ABOVE DECK PIPING
9C	8" CHECK VALVE		BELOW DECK PIPING
10C	1" BURP VALVE		
11C	1" BLEED OFF VALVE		

TRINITY MARINE PRODUCTS - BARREL CAPACITY=10688.46

**KIRBY INLAND MARINE**

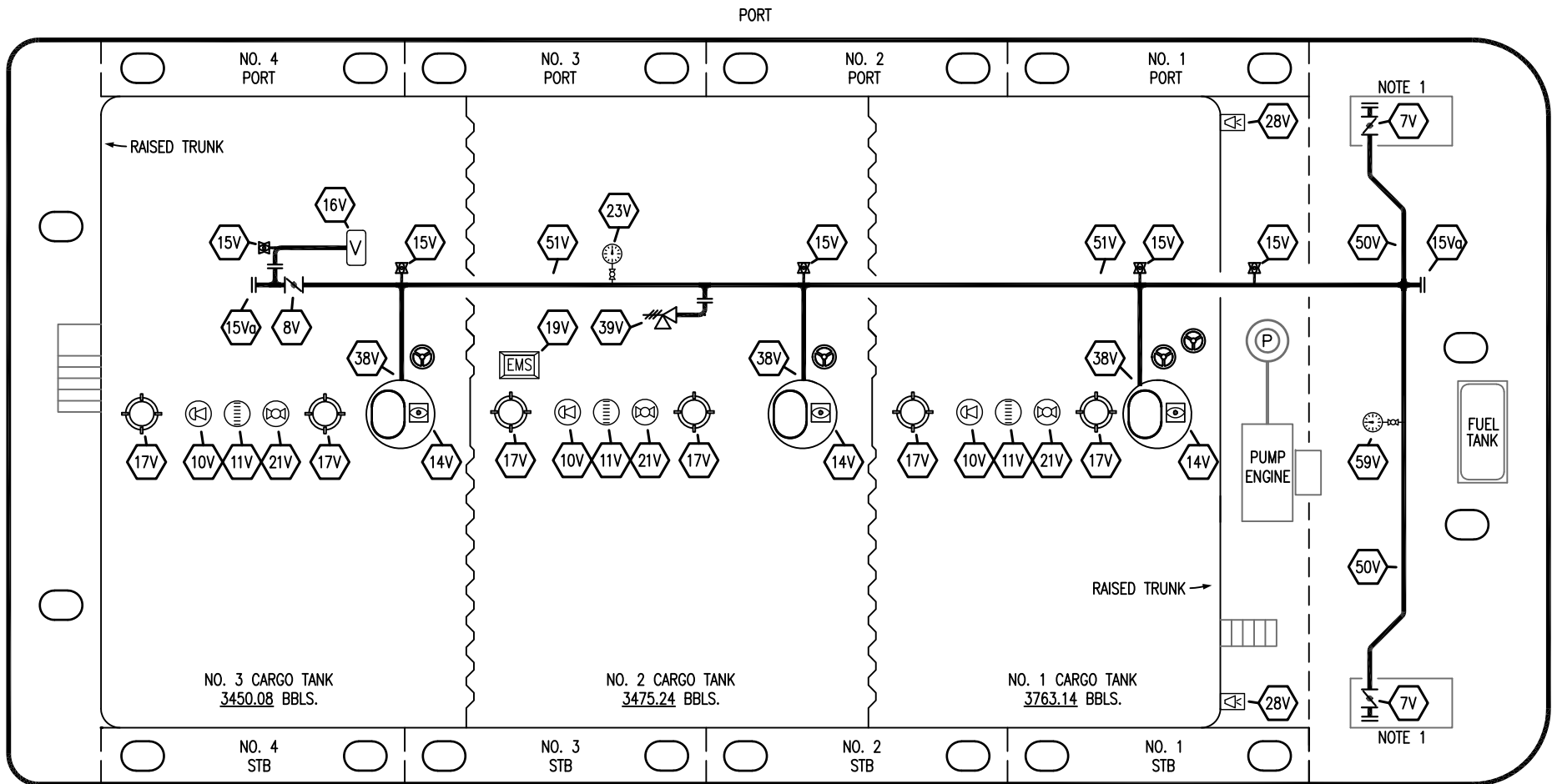
**CARGO  
PIPING FLOW DIAGRAM**

REV.	DATE	BY	CHK	APP	REVISION DESCRIPTION
1	01/15/24	MRV	DDA	FIX	REVISED PER CLIENT COMMENTS
0	02/18/13	KS	DDA		FOR APPROVAL

SCALE: NONE  
PAGE: 1 OF 3

**KIRBY 10278**

REV. **1**




STARBOARD

NOTE 1: CONTAINMENT P/S

TRINITY MARINE PRODUCTS – BARREL CAPACITY=10688.46

NO	DESCRIPTION	NO	DESCRIPTION
7V	8" HEADER VALVE	19V	EMERGENCY ENGINE SHUT DOWN
8V	8" VENT STACK VALVE	21V	HERMETIC GAUGE
10V	HIGH LEVEL/OVERFILL ALARM	23V	PRESSURE GAUGE
11V	GAUGE STICK	28V	DOCK CONNECTION ALARM
14V	SIGHT GLASS W/GAUGE TREE	39V	6" PRESSURE/VACUUM VALVE
15V	2" INSPECTION PORT	38V	8" VAPOR PENETRATION (C)
15Va	8" INSPECTION PORT	50V	8" VAPOR HEADER
16V	8" VAPOR VENT STACK	51V	8" VAPOR PIPELINE
17V	20" BUTTERWORTH	59V	PRESS/VAC GAUGE
			ABOVE DECK PIPING

REV.	DATE	BY	CHK	APP	REVISION DESCRIPTION
1	01/15/24	MRV	DDA	FIX	REVISED PER CLIENT COMMENTS
0	02/18/13	KS	DDA		FOR APPROVAL

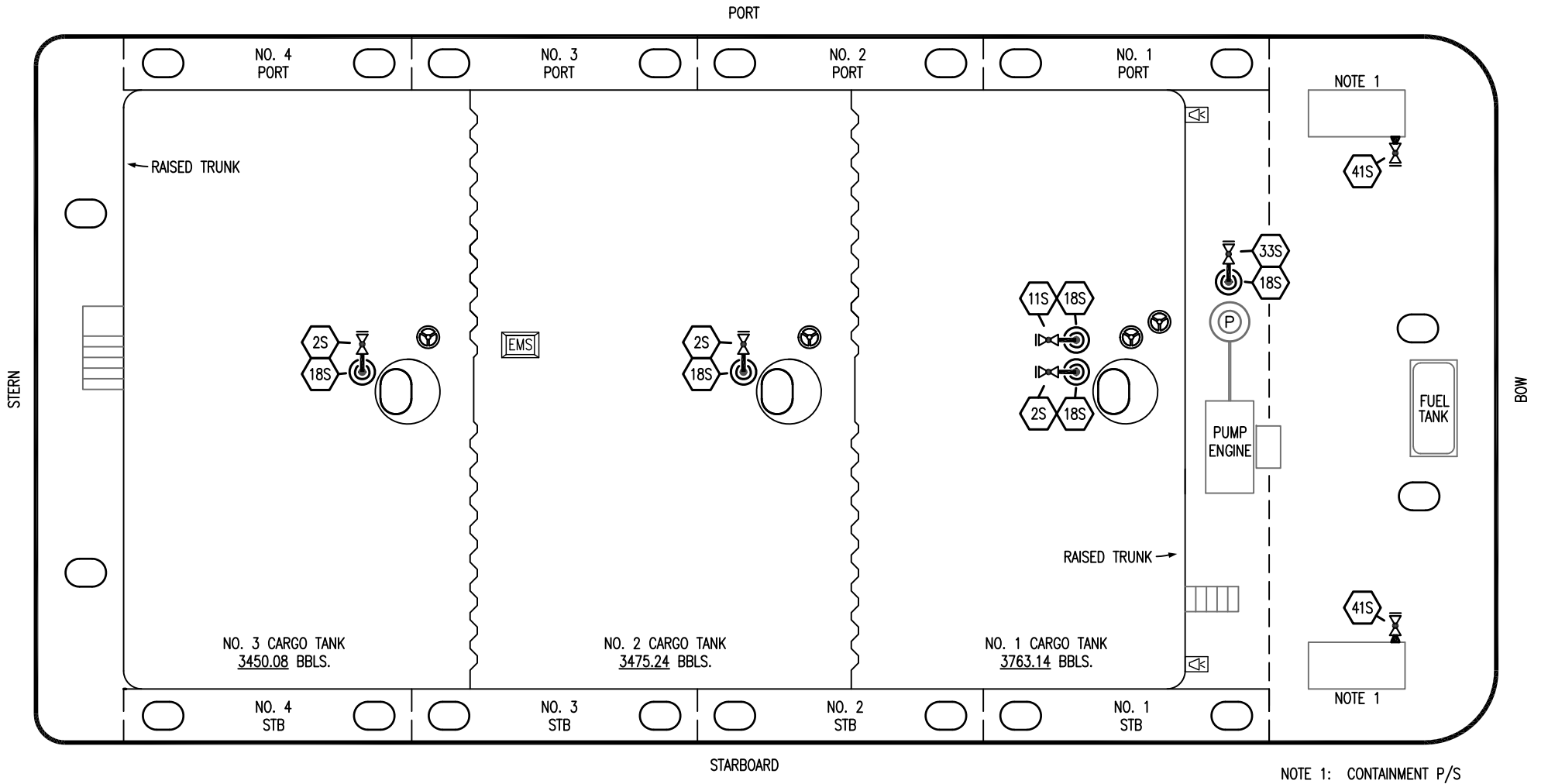


# KIRBY INLAND MARINE

## VAPOR PIPING FLOW DIAGRAM

### KIRBY 10278

SCALE: NONE	REV. 1
PAGE: 2 OF 3	



NOTE 1: CONTAINMENT P/S

- | NO  | DESCRIPTION                        |
|-----|------------------------------------|
| 2S  | CARGO SUMP SUCTION VALVE           |
| 11S | LOWER CARGO PIPELINE SUCTION VALVE |
| 18S | STRIPPING DROP                     |
| 33S | PUMP WELL SUCTION VALVE            |
| 41S | CONTAINMENT DRAIN VALVE W/ CAP     |

TRINITY MARINE PRODUCTS – BARREL CAPACITY=10688.46

REV.	DATE	BY	CHK	APP	REVISION DESCRIPTION
1	01/15/24	MRV	DDA	FIX	REVISED PER CLIENT COMMENTS
0	02/18/13	KS	DDA		FOR APPROVAL

KIRBY INLAND MARINE

STRIPPING  
PIPING FLOW DIAGRAM

SCALE: NONE	KIRBY 10278	REV. 1
PAGE: 3 OF 3		