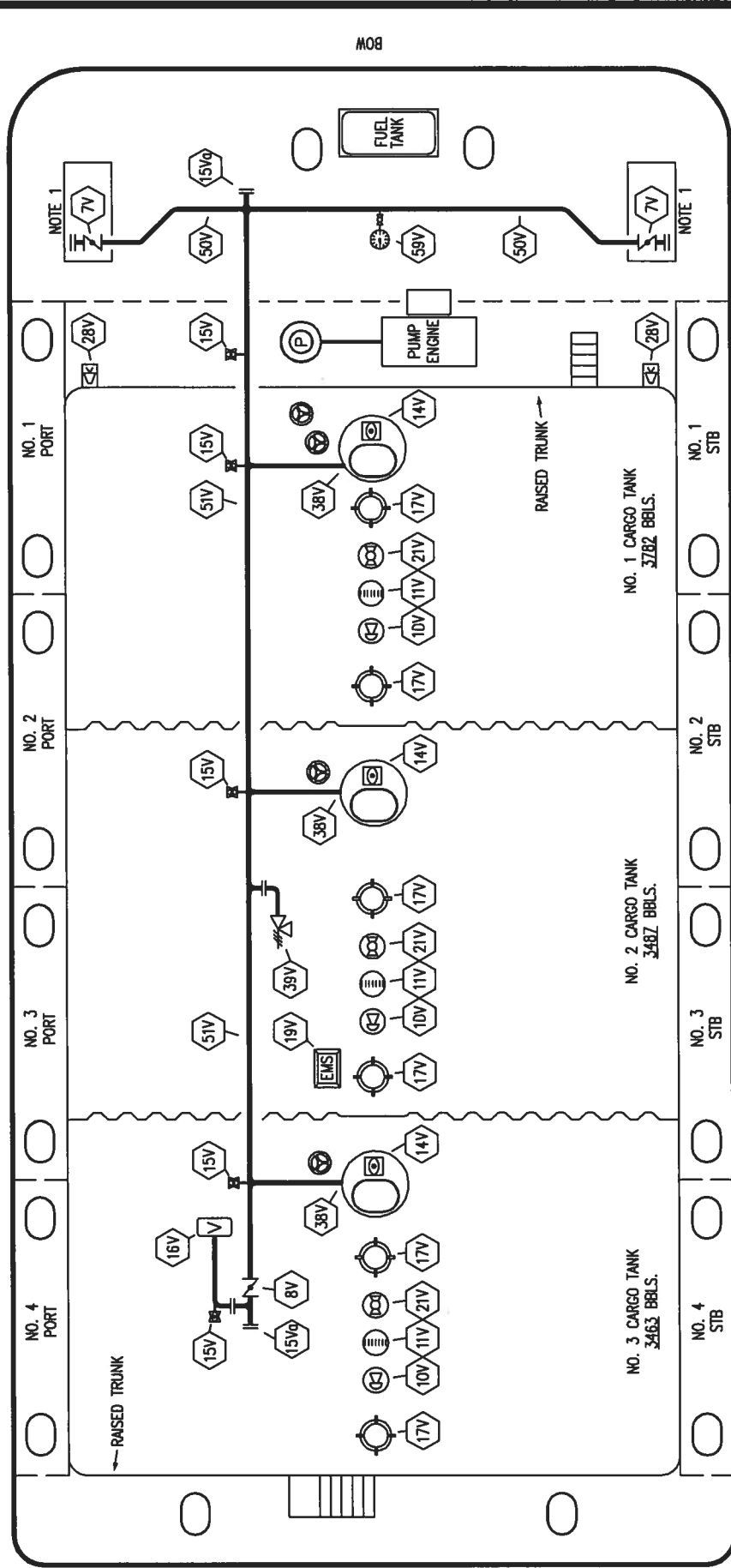


PORT



STERN

BOW

STARBOARD

NOTE 1: CONTAINMENT P/S

NO	DESCRIPTION
7V	8" HEADER VALVE
8V	8" VENT STACK VALVE
10V	HIGH LEVEL/OVERFILL ALARM
11V	GAUGE STICK
14V	SIGHT GLASS W/GAUGE TREE
15V	2" INSPECTION PORT
15VQ	8" INSPECTION PORT
16V	8" VAPOR VENT STACK
17V	20" BUTTERWORTH
19V	EMERGENCY ENGINE SHUT DOWN
21V	HERMETIC GAUGE
28V	DOCK CONNECTION ALARM
38V	8" PRESSURE/VACUUM VALVE
38V	8" VAPOR PENETRATION
50V	8" VAPOR HEADER
51V	8" VAPOR PIPELINE
59V	PRESS/VAC GAUGE
---	ABOVE DECK PIPING

TRINITY MARINE PRODUCTS - BARREL CAPACITY=10732



VAPOR
PIPING FLOW DIAGRAM

REV.	DATE	BY	CHK	APP	REVISION	DESCRIPTION
0	02/18/13	KS	DDA		FOR APPROVAL	

SCALE: NONE
PAGE: 2 OF 3

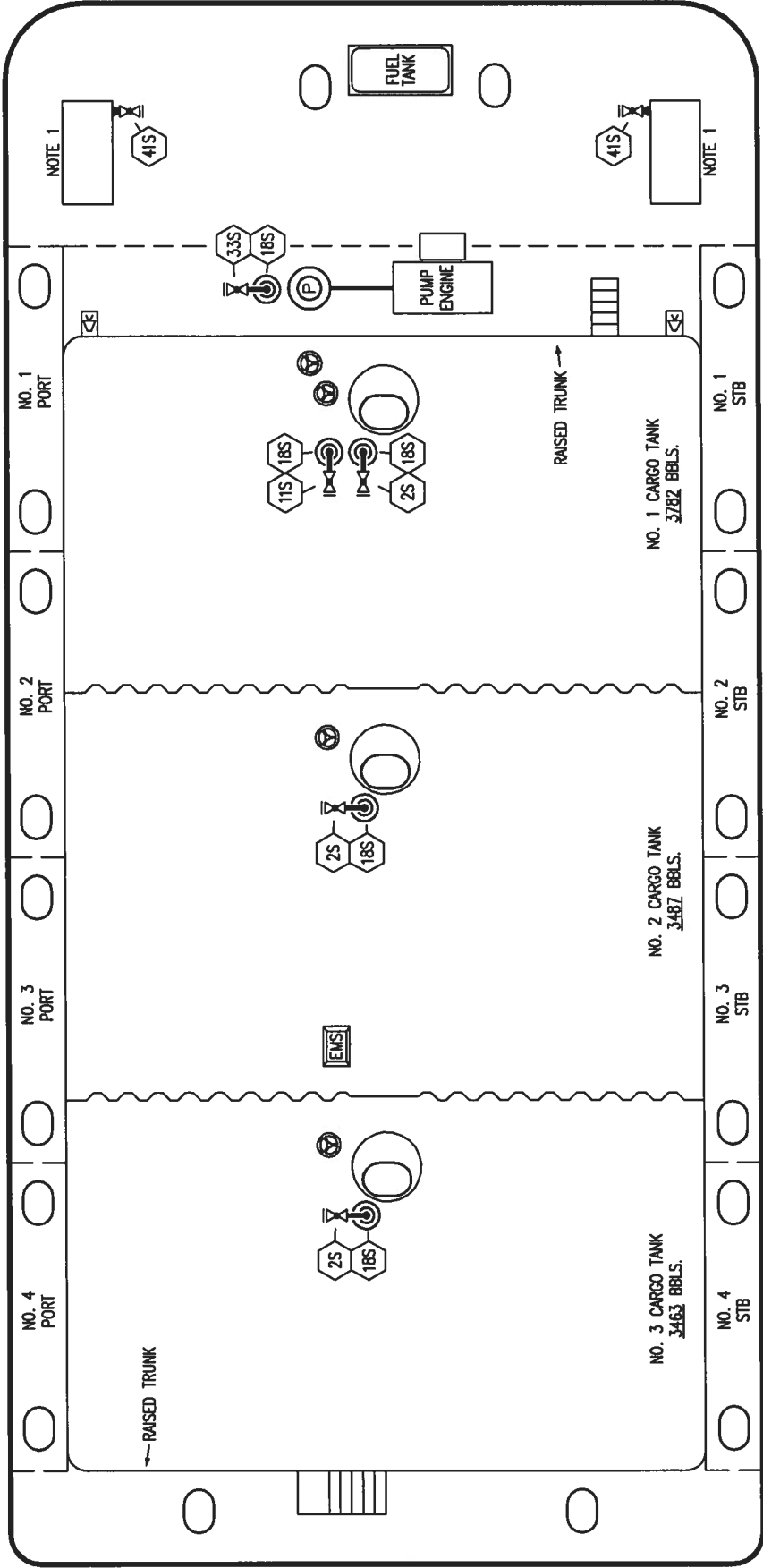
REV. **0**

KIRBY 10252

PORT

BOB

STERN



NOTE 1: CONTAINMENT P/S

STARBOARD

DESCRIPTION

- CARGO SUMP SUCTION VALVE
- LOWER CARGO PIPELINE SUCTION VALVE
- STRIPPING DROP
- PUMP WELL SUCTION VALVE
- CONTAINMENT DRAIN VALVE W/ CAP

- 2S
- 11S
- 18S
- 33S
- 41S

TRINITY MARINE PRODUCTS - BARREL CAPACITY=10732



**STRIPPING
PIPING FLOW DIAGRAM**

REV.	DATE	BY	CHK/APP	REVISION DESCRIPTION	SCALE:	REV.
0	02/18/13	KS	DDA	FOR APPROVAL	NONE	0

PAGE: 3 OF 3