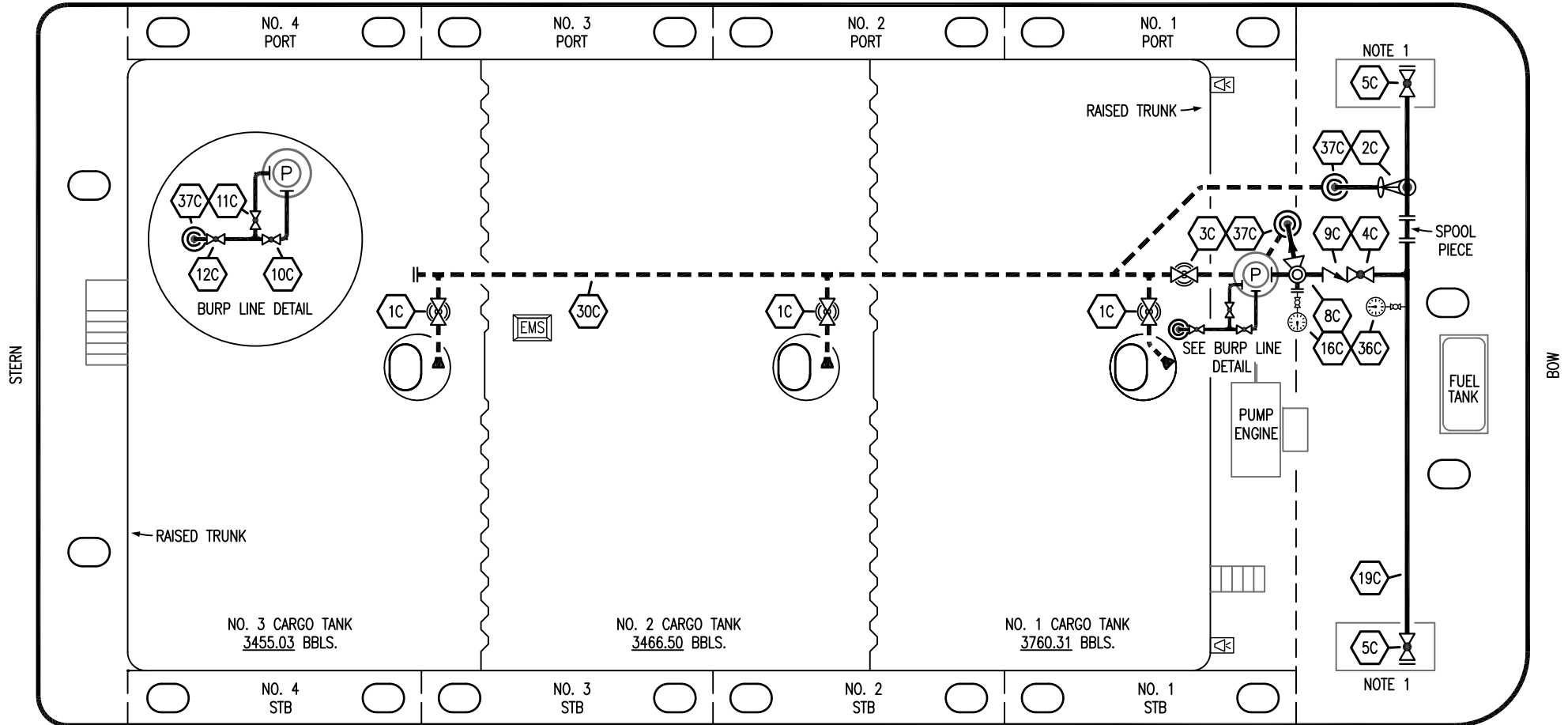


PORT



NO. 3 CARGO TANK
3455.03 BBLs.

NO. 2 CARGO TANK
3466.50 BBLs.

NO. 1 CARGO TANK
3760.31 BBLs.

FUEL TANK

STARBOARD

NOTE 1: CONTAINMENT P/S

NO	DESCRIPTION	NO	DESCRIPTION
1C	8" CARGO TANK VALVE	12C	1" BURP VALVE RETURN TO CARGO TANK
2C	8" LOAD VALVE	16C	DISCHARGE PRESSURE GAUGE
3C	10" MASTER SUCTION VALVE	19C	8" CARGO HEADER
4C	8" DISCHARGE VALVE	30C	10" CARGO PIPELINE
5C	8" HEADER VALVE	36C	PRESSURE GAUGE
8C	6" RELIEF VALVE	37C	CARGO DROP
9C	8" CHECK VALVE		ABOVE DECK PIPING
10C	1" BURP VALVE		BELOW DECK PIPING
11C	1" BLEED OFF VALVE		

TRINITY MARINE PRODUCTS - BARREL CAPACITY=10732

KIRBY INLAND MARINE

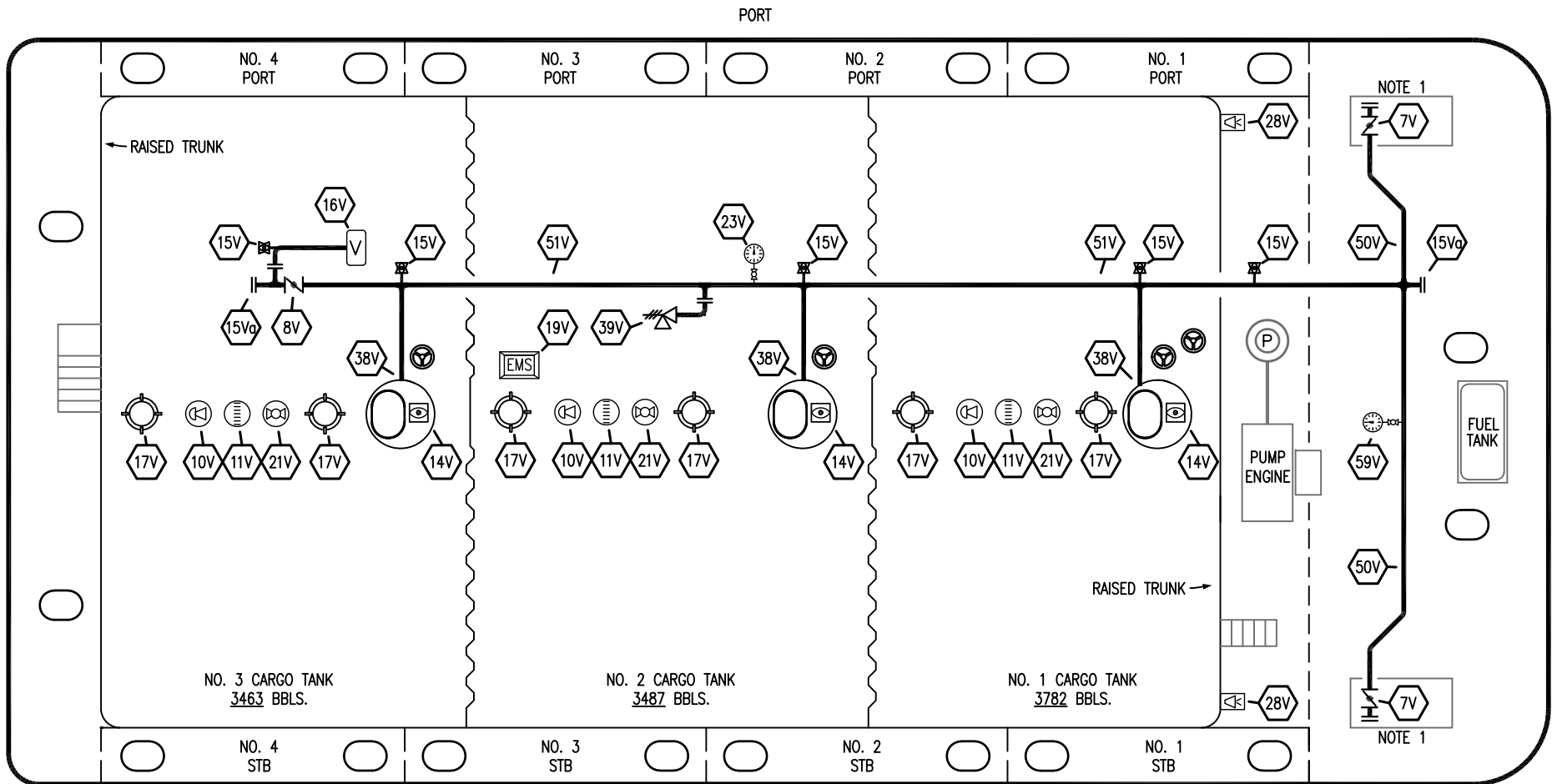
**CARGO
PIPING FLOW DIAGRAM**

REV.	DATE	BY	CHK	APP	REVISION DESCRIPTION
2	11/15/22	MRV	DDA	FIX	REVISED PER CLIENT COMMENTS
1	09/19/17	WFB	DDA		REMOVED 6C SALVAGE VALVE
0	06/11/12	DCB	DDA		FOR APPROVAL

SCALE: NONE
PAGE: 1 OF 3

KIRBY 10243

REV. **2**




NOTE 1: CONTAINMENT P/S

TRINITY MARINE PRODUCTS – BARREL CAPACITY=10732

NO	DESCRIPTION	NO	DESCRIPTION
7V	8" HEADER VALVE	19V	EMERGENCY ENGINE SHUT DOWN
8V	8" VENT STACK VALVE	21V	HERMETIC GAUGE
10V	HIGH LEVEL/OVERFILL ALARM	23V	PRESSURE GAUGE
11V	GAUGE STICK	28V	DOCK CONNECTION ALARM
14V	SIGHT GLASS W/GAUGE TREE	39V	6" PRESSURE/VACUUM VALVE
15V	2" INSPECTION PORT	38V	8" VAPOR PENETRATION (C)
15Va	8" INSPECTION PORT	50V	8" VAPOR HEADER
16V	8" VAPOR VENT STACK	51V	8" VAPOR PIPELINE
17V	20" BUTTERWORTH	59V	PRESS/VAC GAUGE
			ABOVE DECK PIPING

REV.	DATE	BY	CHK	APP	REVISION DESCRIPTION
1	11/15/22	MRV	DDA	FIX	REVISED PER CLIENT COMMENTS
0	06/11/12	DCB	DDA		FOR APPROVAL

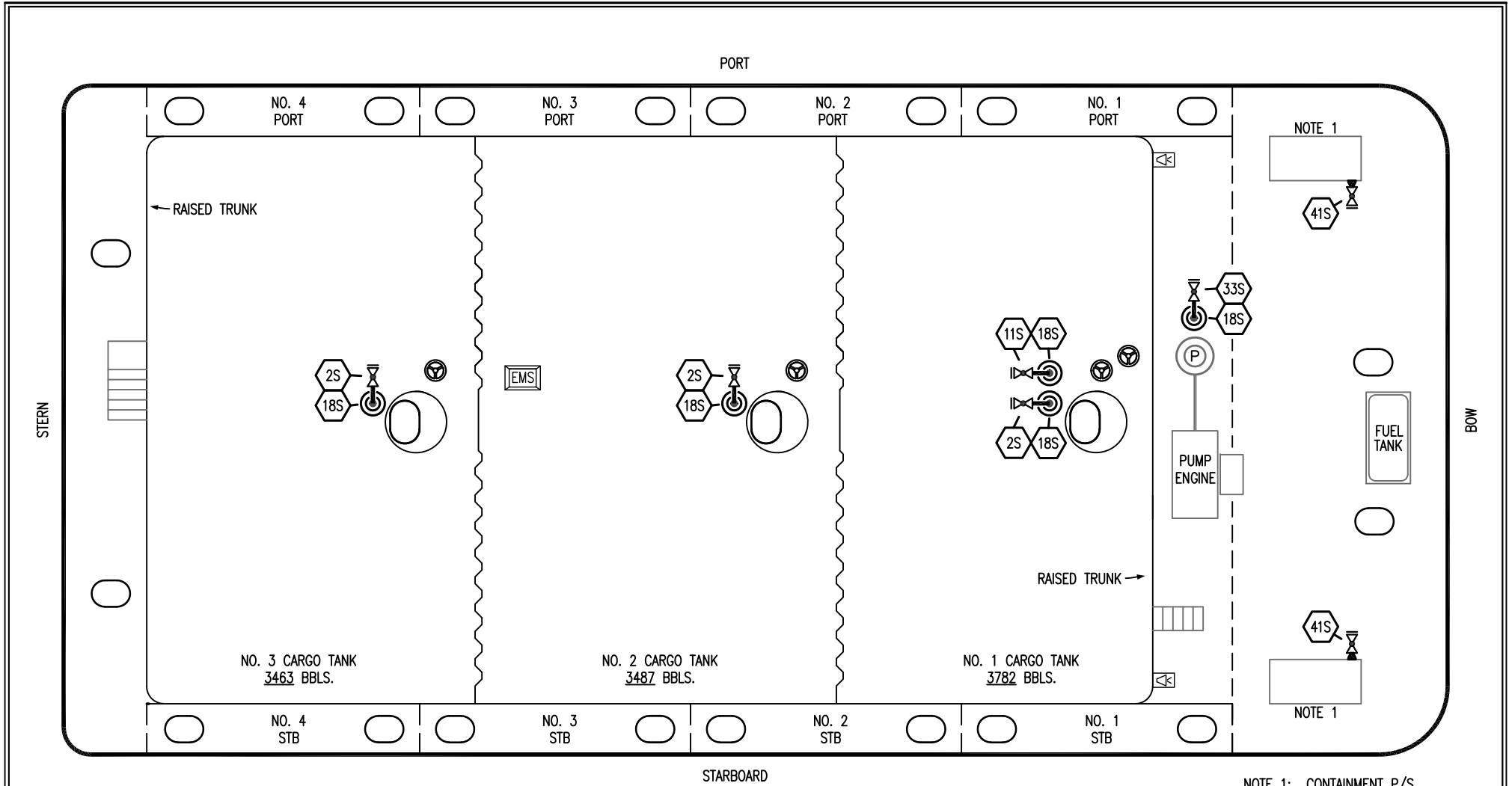


KIRBY INLAND MARINE


VAPOR PIPING FLOW DIAGRAM

KIRBY 10243


SCALE: NONE	REV. 1
PAGE: 2 OF 3	



NOTE 1: CONTAINMENT P/S

- | NO | DESCRIPTION |
|-----|--|
| 2S | CARGO SUMP SUCTION VALVE |
| 11S | LOWER CARGO PIPELINE SUCTION VALVE |
| 18S | STRIPPING DROP  |
| 33S | PUMP WELL SUCTION VALVE |
| 41S | CONTAINMENT DRAIN VALVE W/ CAP |

TRINITY MARINE PRODUCTS – BARREL CAPACITY=10732

						<h2 style="margin: 0;">KIRBY INLAND MARINE</h2>	
<h3 style="margin: 0;">STRIPPING</h3>						<h3 style="margin: 0;">PIPING FLOW DIAGRAM</h3>	
1	11/15/22	MRV	DDA	FIX	REVISED PER CLIENT COMMENTS	SCALE: NONE	<h1 style="margin: 0;">KIRBY 10243</h1>
0	06/11/12	DCB	DDA		FOR APPROVAL	PAGE: 3 OF 3	
REV.	DATE	BY	CHK	APP	REVISION DESCRIPTION	<div style="display: flex; justify-content: space-between;"> REV. 1 </div>	